

Baixo de Repieno

Matinas da Maternidade de N. Sra.

a 4 vozes e Org.

Dedicadas

AO Ilmo. Sr. Ant. Mo. S.º

Conigo da S.ª Sé Primaz de Braga

por

Ant. da S.ª S.ª

Mestre da Capella da S.ª Sé

de

Porto

1811



Basso de Repieno

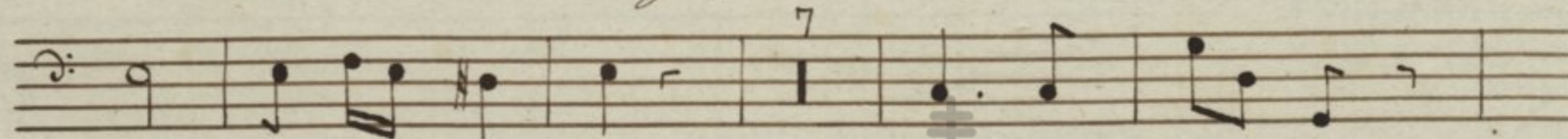
Invitatorio



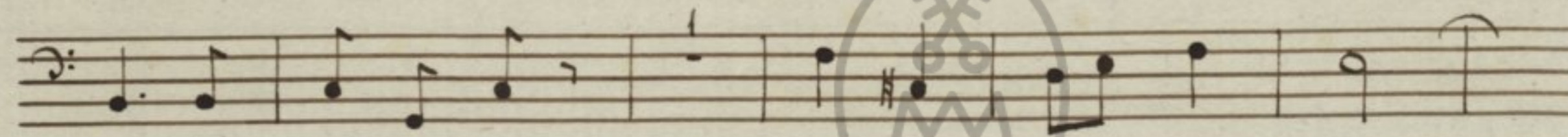
Mater ni ta tem be



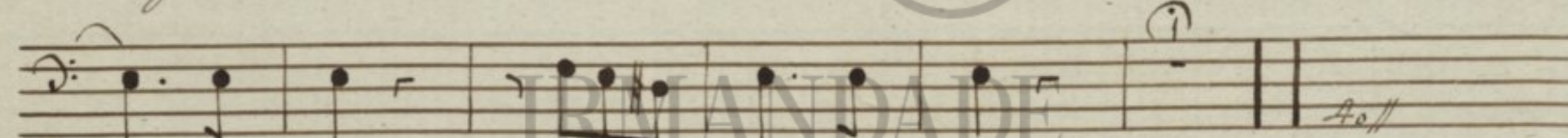
a te Ma ri a vir gi nis ce le bre



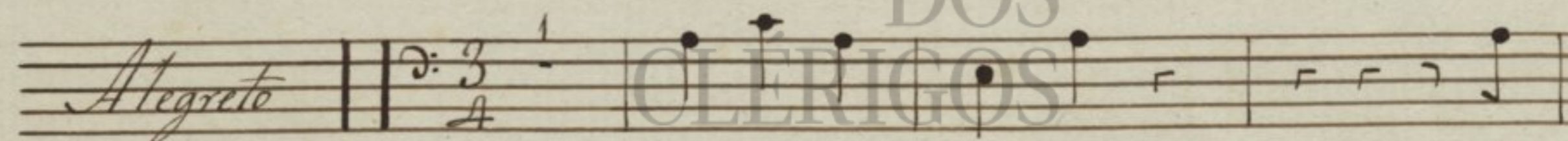
mus ce le bre mus Christum e - jus



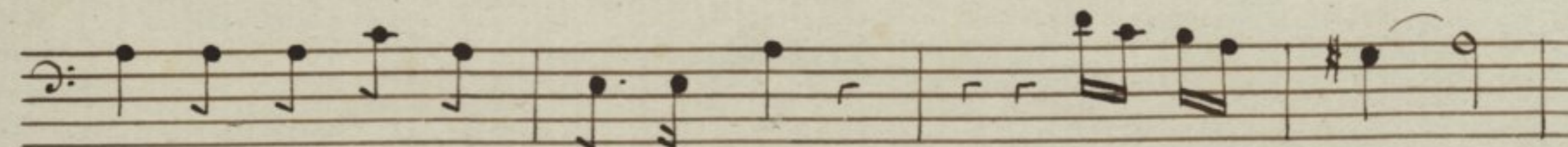
e jus Fi li um a do re - mus Do



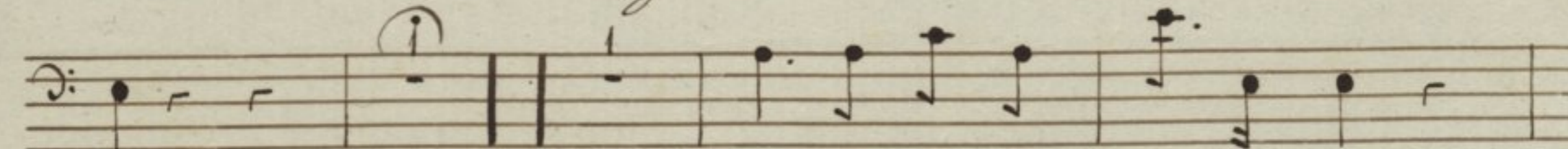
- mi num Al - - le lu ia



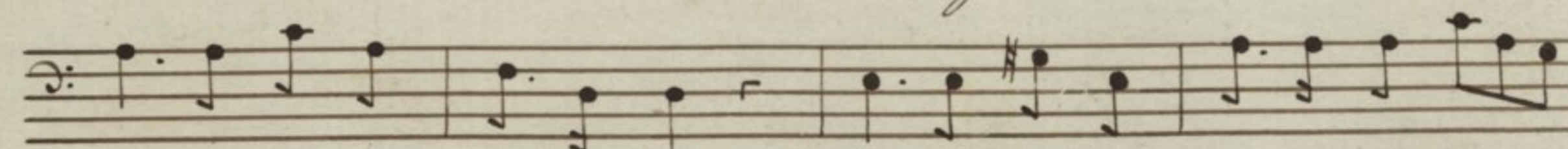
Mater ni ta tem be



a te Ma ri a vir gi nis ce le bre - -

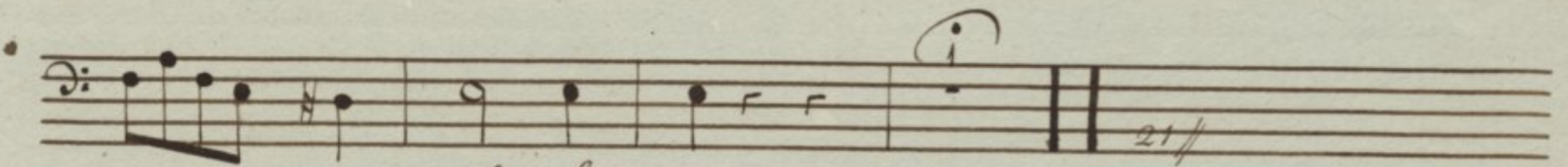


mus Christum e jus Fi li um



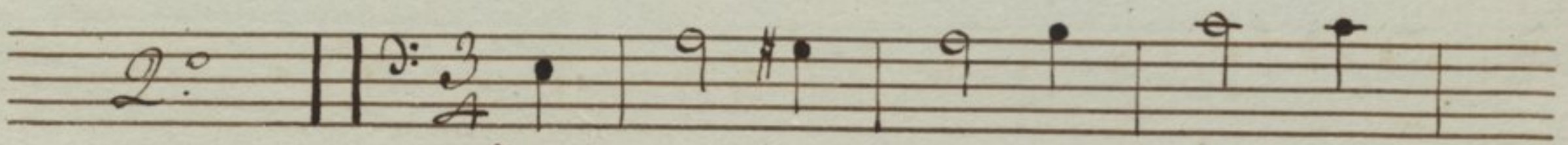
a do re mus Do mi num a do re mus Do mi num al -



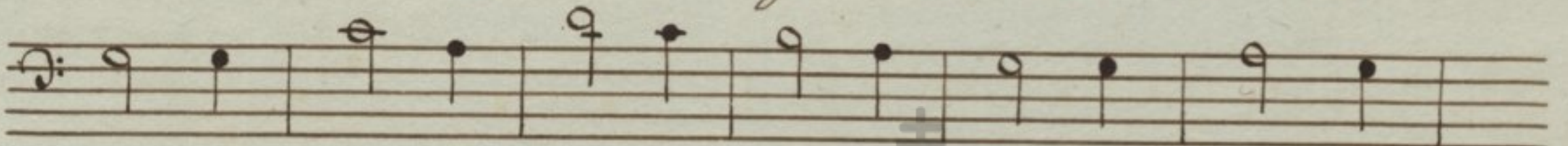


le lu ia

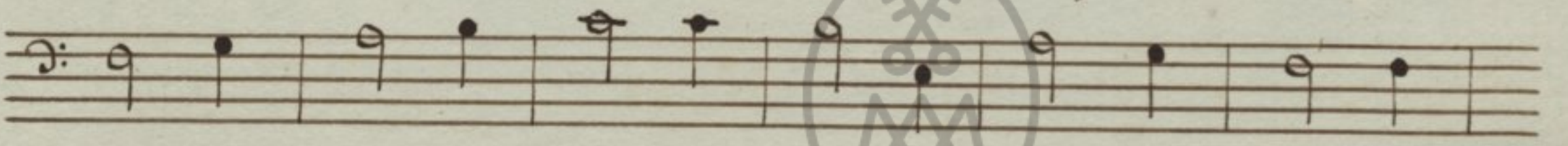
*Hymno, principia o Coro*



Hoc Vir go no bis e di



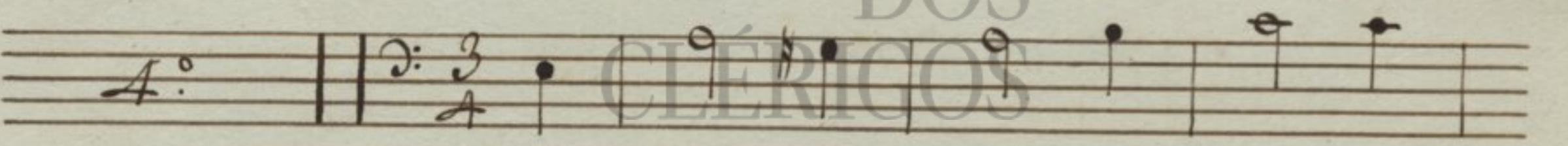
dit noi tra sa lu tis Auspi cem qui non re



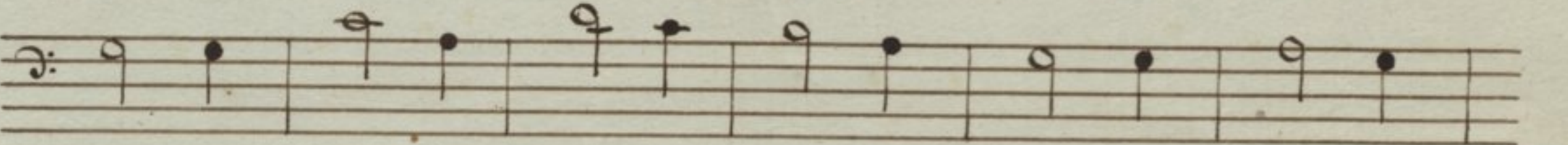
de mit san qui ne pa nas cru cem que per tu



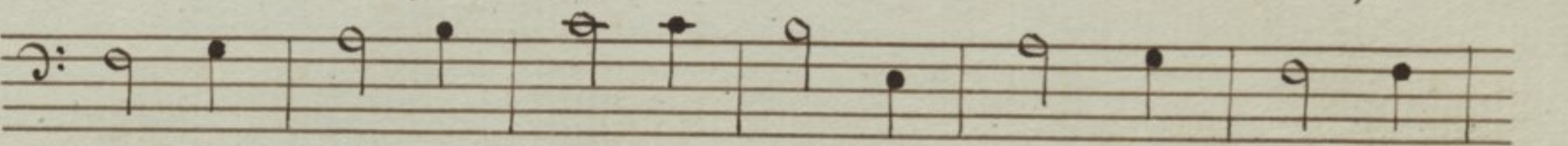
lit.



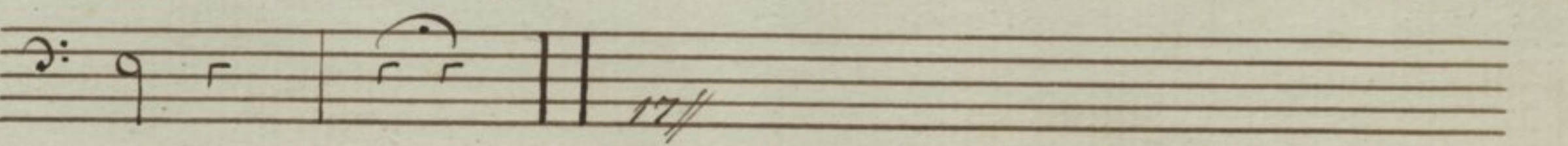
So ces Pa ren tis ex ci



pit vo tis que Na tus an nu it hanc quis que



sem per di li gat re bus quem ar ctis in vo



cet.



1.º Noturno, Responssorio 1.º

*And.º mod.º*

Fe lix es Sa cra

vir - go Ma ri a et om ni laude di

gnissi ma di gnissi ma di gnis - si ma

*All.º* 8

fe lix es per quem sal va ti

et re dempti su mus Al le lu

ia Al le lu ia Al le lu ia

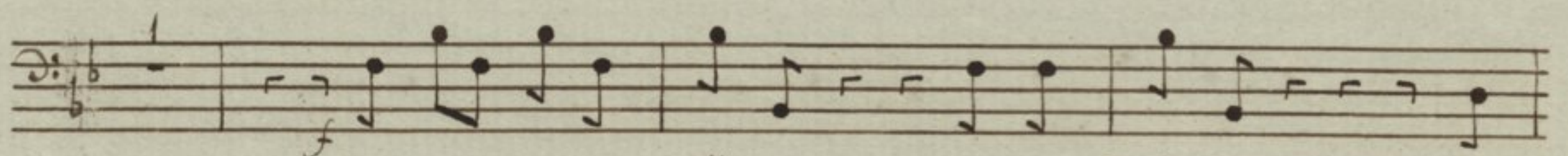
*V.º Tacet. Al Segno*

Responssorio 2.º

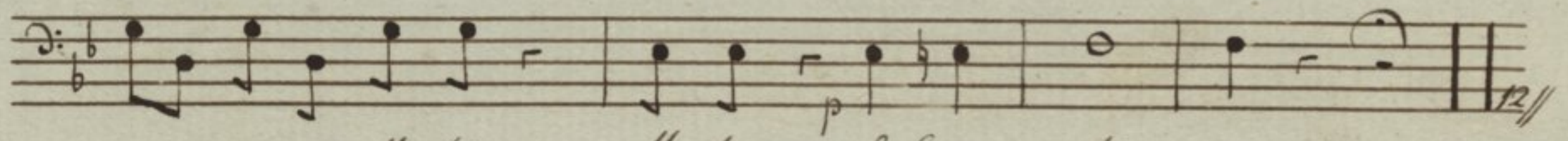
*And.º con molto*

Si ne ta - ctu pu do ris

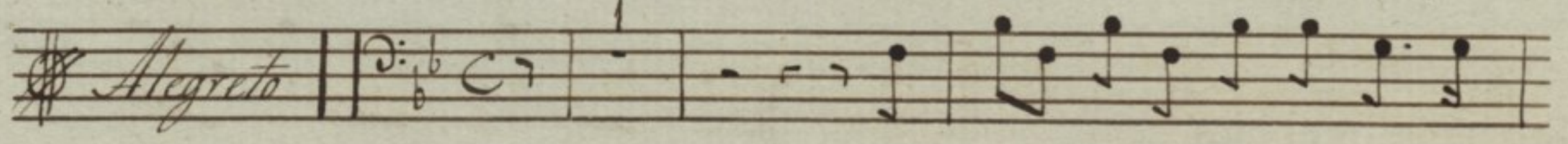




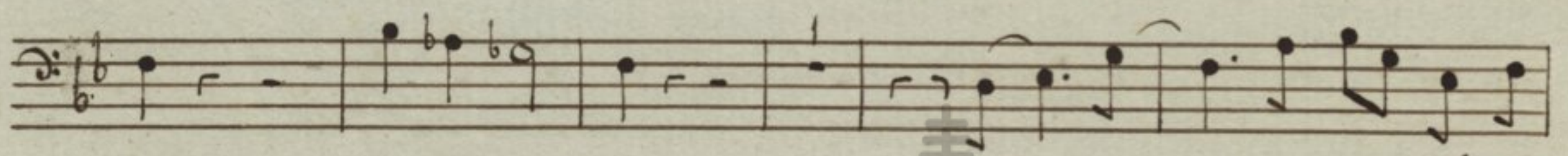
*in ven ta es Ma ter Sal va to ris in*



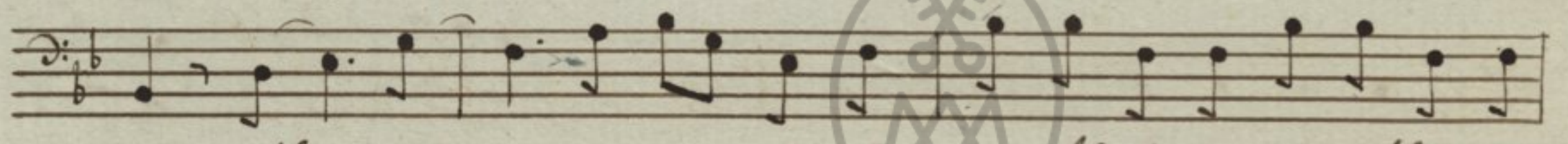
*ven ta es Ma ter Ma ter Sal va to ris*



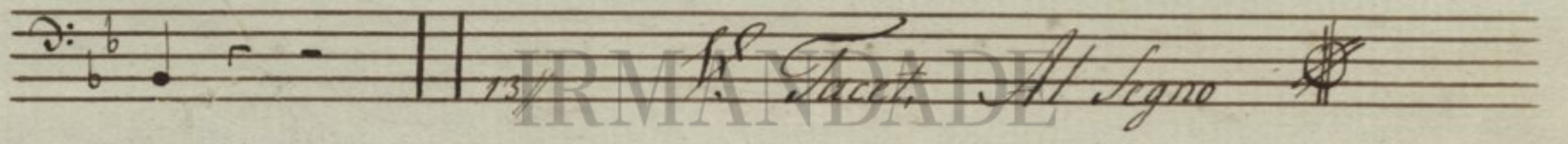
*in tu o se clausit vis ce*



*ra factus ho mo Al - - - - - le lu*



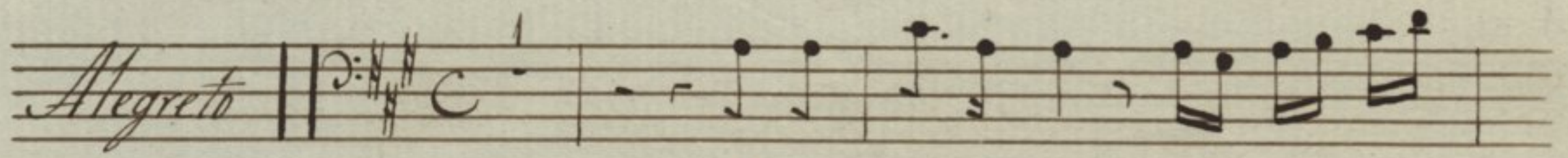
*ia Al - - - - - le lu ia Al le lu ia Al le lu*



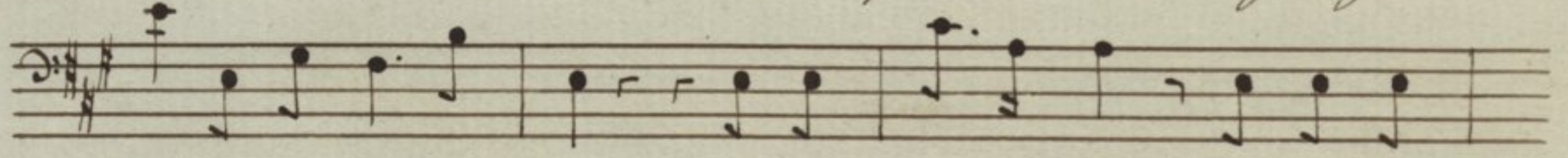
*ia*

*13. Tacet. Al Segno*

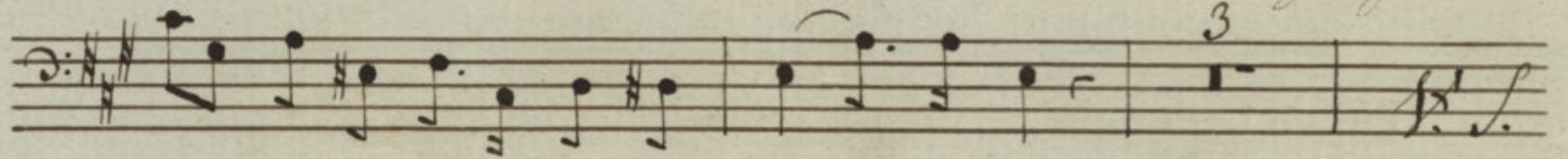
*Responso 3.º*



*Mul ta fi li a con gre ga -*



*ve runt di vi ti as . mul ta fi li a con gre ga*



*ve runt di vi ti as di vi - ti as*



tu su per gres sa es u ni ver - - sas

*Allegro*

Spe ci o sa fa cta

es et su a vis in de li ci is -

tu is San - - cta San - cta San cta

De i ge ni tris Al - - - - -

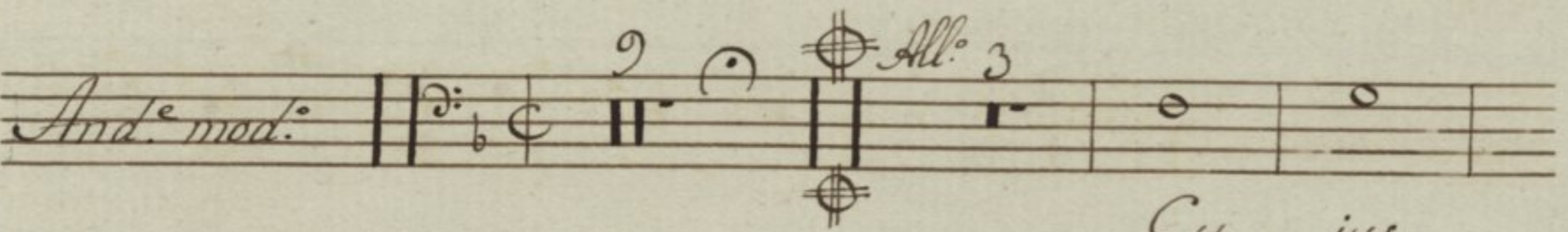
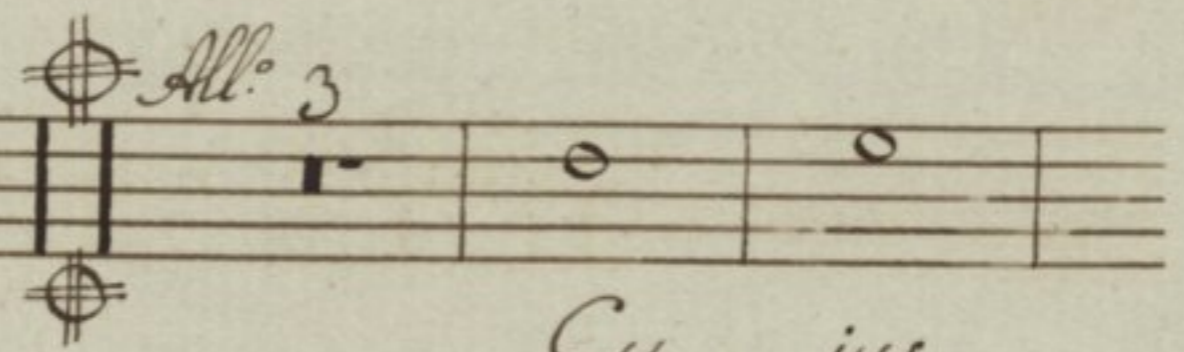
le lu

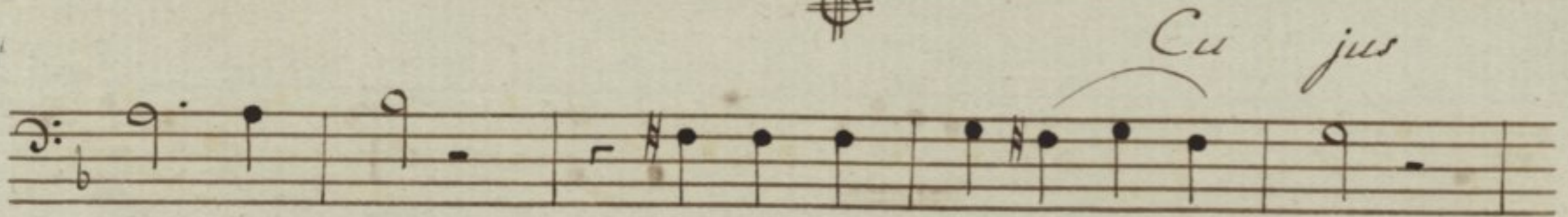
ia Al le lu ia Al le lu ia

*V. Tacet, Al Segno & Gloria, Tacet, Al Segno &*

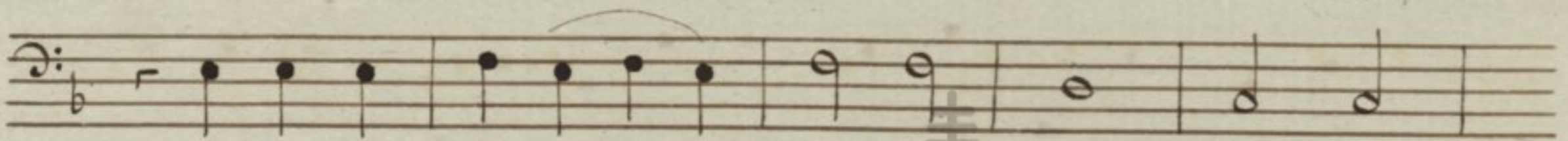


2.º Noturno Responsorio 4.º

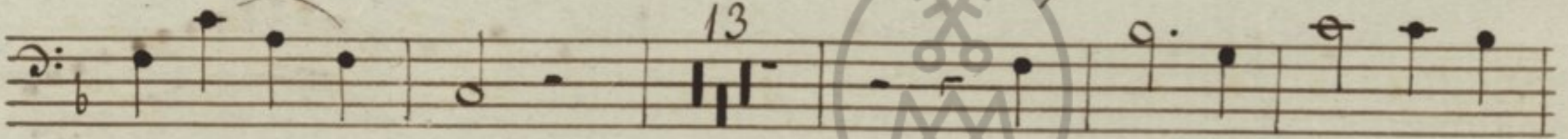
And. mod.  All.º 3 

*Cu jus*  


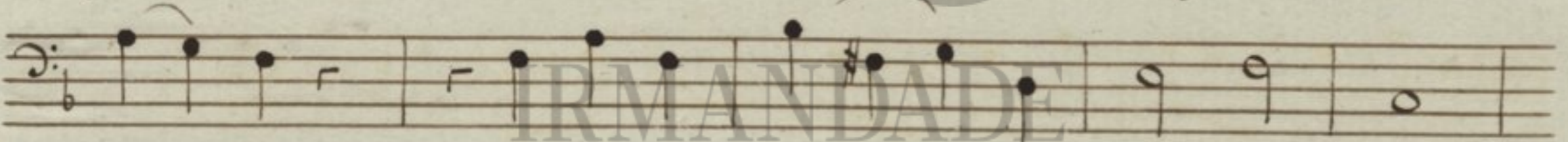
Do mi num hu mi li ta - - - tem



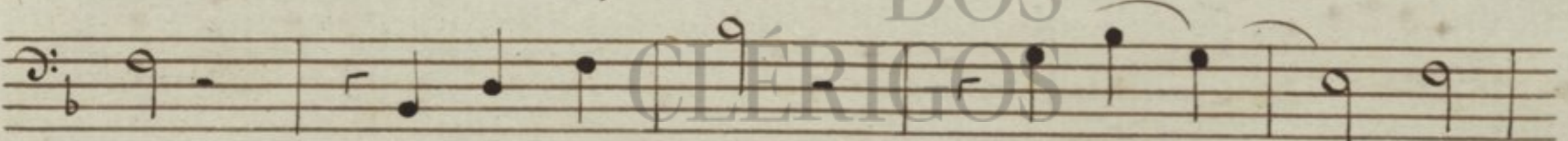
hu mi li ta - - - tem res pe xit res



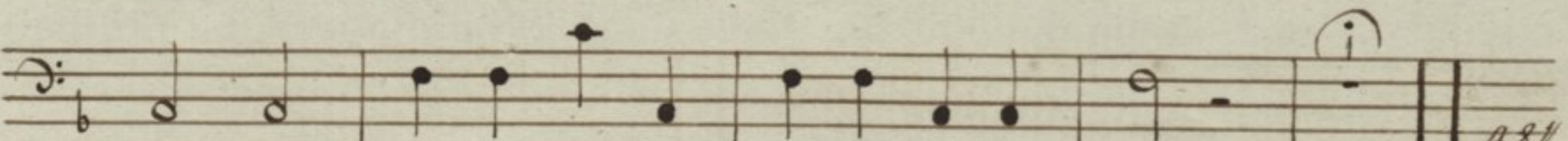
pe - - - xit que An ge lo nun ti.



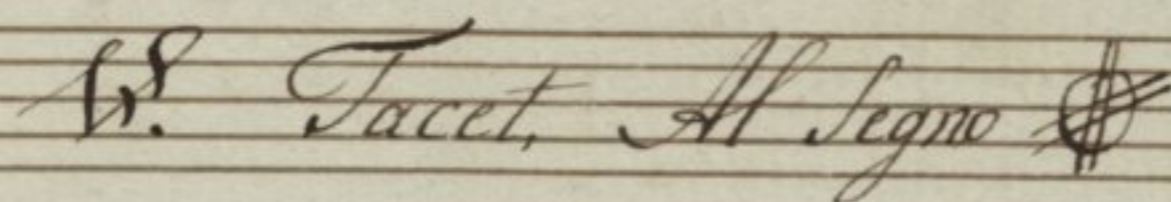
an - te con ce pit sal - va to rem mun

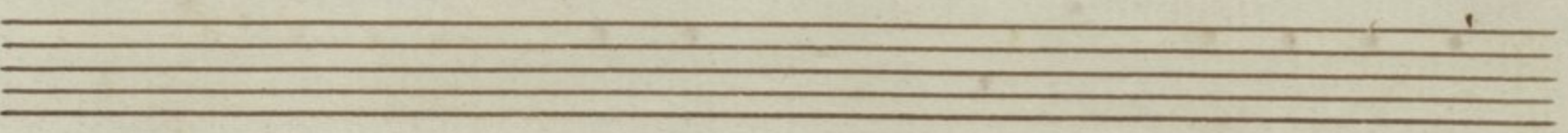


di Al le lu ia Al - - - -



le lu ia Al le lu ia Al le lu ia

V.º Tacet, Al Segno 





Responsorio 5.º

*And.º con motto*

Be ne di cta Fi lia

tu a - - Do mi no qui aper

te fructum vi te fructum vi te com mu ni ca vi mus

qui a per te fructum vi te com mu ni ca - -

*Ad.º tempo Primo*

- - vi mus Com mu ni

ca - - - vi mus Com mu ni

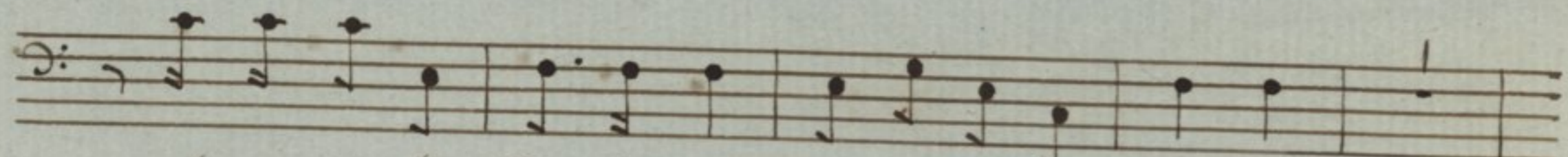
ca - - - vi mus

*Allegretto*

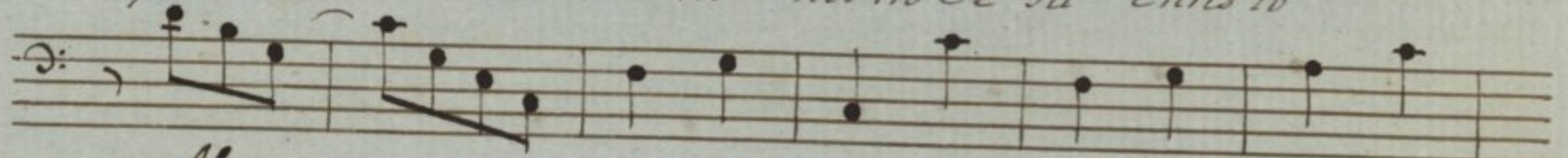
pla cu is ti Do mi no

nos tro Je su Chris to So la si ne ex em plo

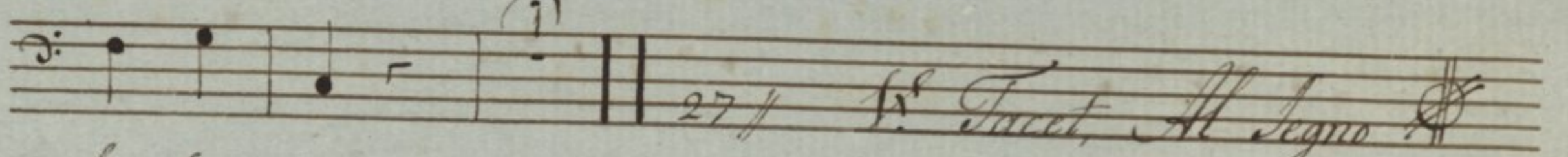




placui tibi Domine nostro Iesu Christo



Al - - - le lu ia Al le lu ia Al

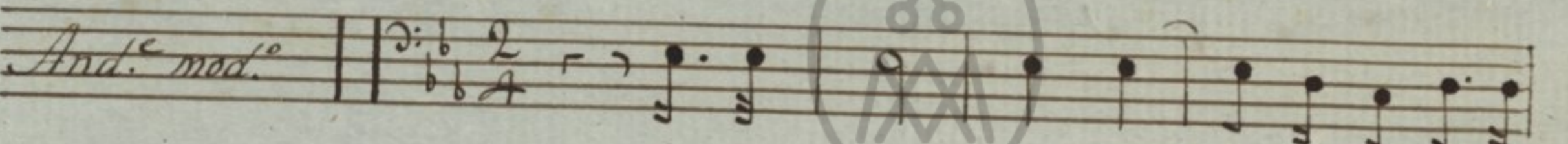


le lu ia

27 //

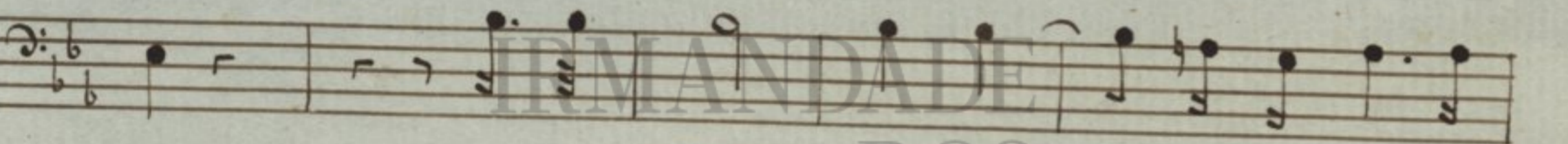
1. Tacet, Al Segno

Responsorio 6.

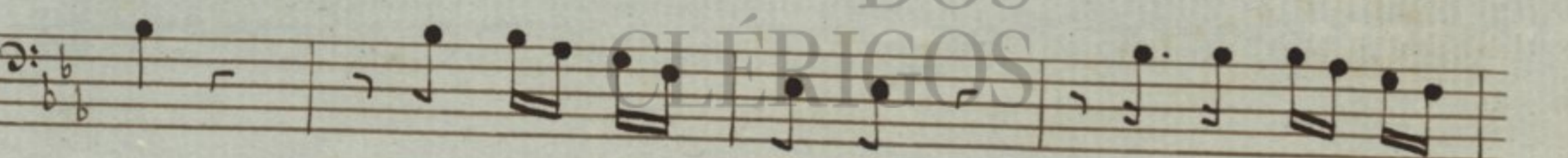


And. mod.

Be ne di cta in - ter mu li e



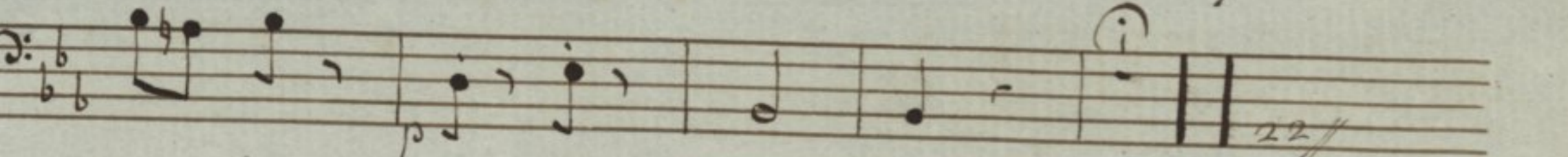
res Be ne di cta in - ter mu li e



res et be - ne - di ctus be ne di ctus



fru ctus fru ctus ven tris fru ctus

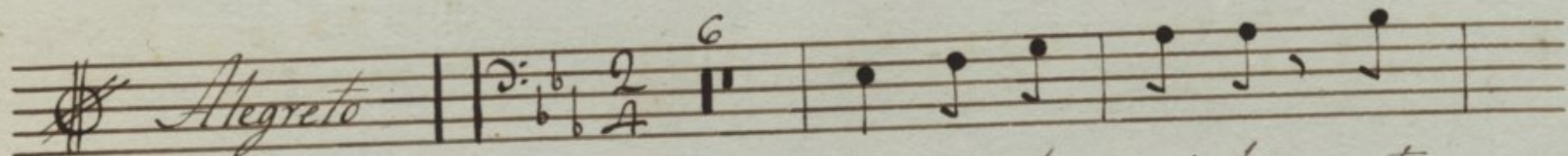


ven tris ven tris tu i

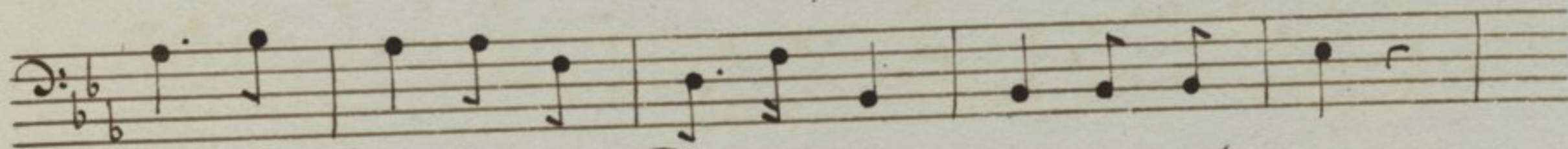
22 //

Volti Subito

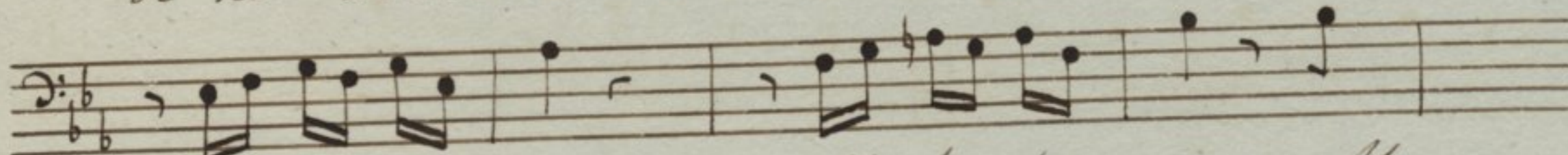


*Alegreto* 

Un de hoc mi hi ut



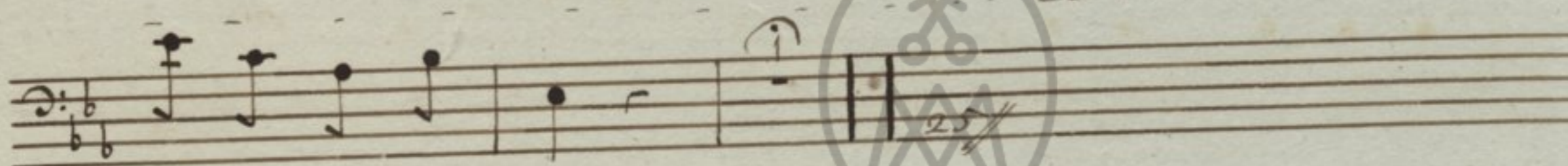
ve ni at Ma ter Do mi ni me i ad me



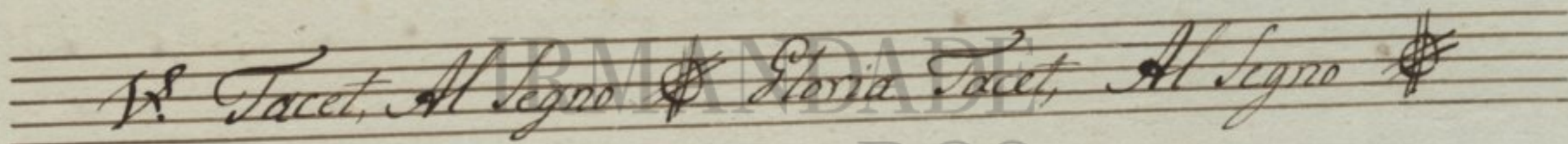
Al le lu ia Al le lu - ia Al



le lu ia Al le lu

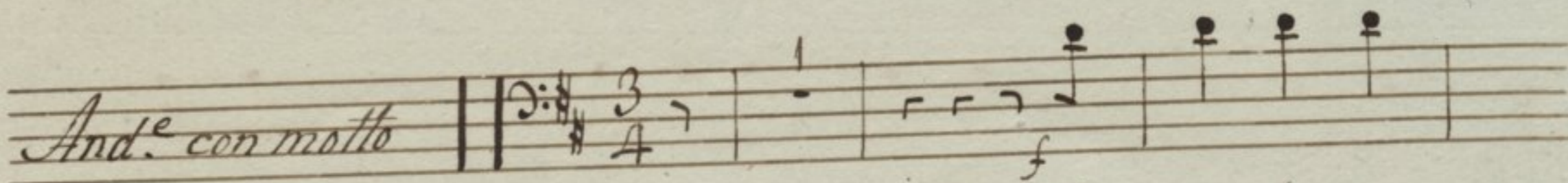


ia Al le lu ia

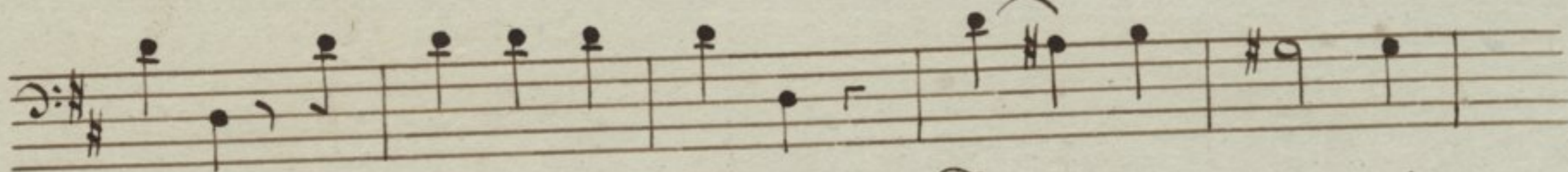
*V. Tacet, Al Segno & Gloria Tacet, Al Segno* 

IRMANDADE DOS CLÉRIGOS

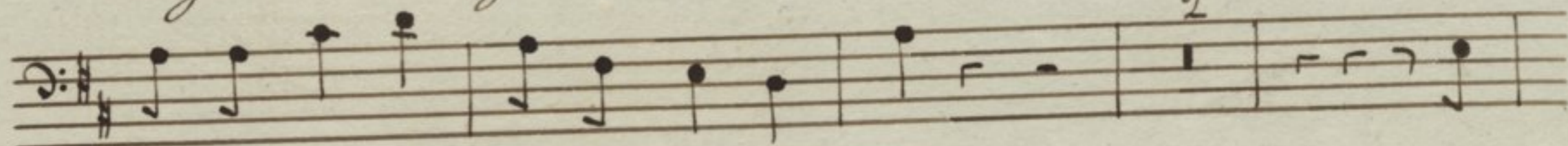
*3.º Noturno* *Responsorio 7.º*

*And.º con molto* 

Be a ta es



vir go es vir go Ma ri a De - i ge ni



tris be a ta es be a ta es qua



13

cre di dis ti Do mi no per fe - cta sunt in  
 te quo di cta sunt ti bi quo di cta sunt quo  
 di cta sunt quo di - - cta sunt ti - - - bi

4

*All.*  
 pro - pte re a pro -  
 pte re a be ne di xit te Deus in a ter num .  
 Al le lu ia Al le lu ia Al le lu ia

*Tr. Tacet, Al Segno*





IRMANDADE  
DOS  
CLÉRIGOS