

*Sinte de Papierno*

*Matinas da Maternidade de N. Inv.<sup>a</sup>*

*a 4 vozes e Org.*

*Dedicadas*

*Al. Illmo e Rmo S.<sup>r</sup> Antonio Mor.<sup>a</sup>*

*Conigo da S.<sup>ta</sup> Sé Primaz de Braga*

*por*

*Ant.<sup>o</sup> da S.<sup>a</sup> Lute*

*Mestre da Capella da S.<sup>ta</sup> Sé*

*do*

*Porto*

1811



Tiple de Presiero

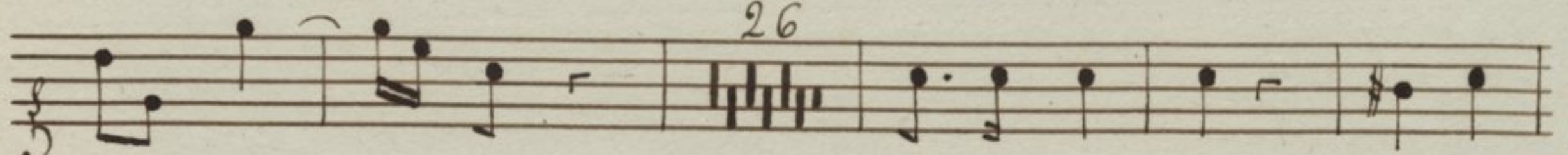
Invitatorio

*Adagio* *Solo*

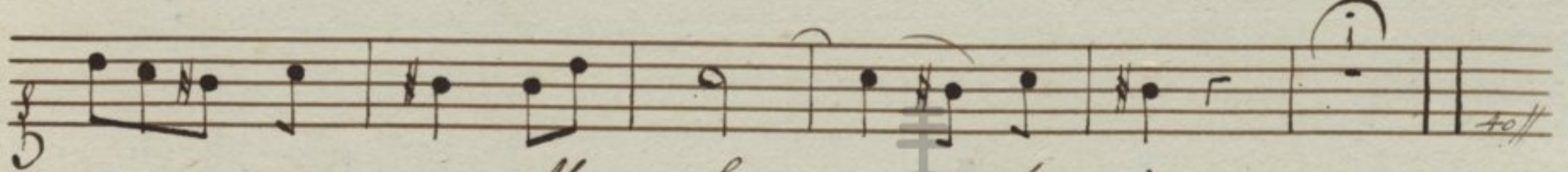


Ma - ter ni - ta - tem Ma - ter ni -

26




ta - - - tem a do re mus Do -

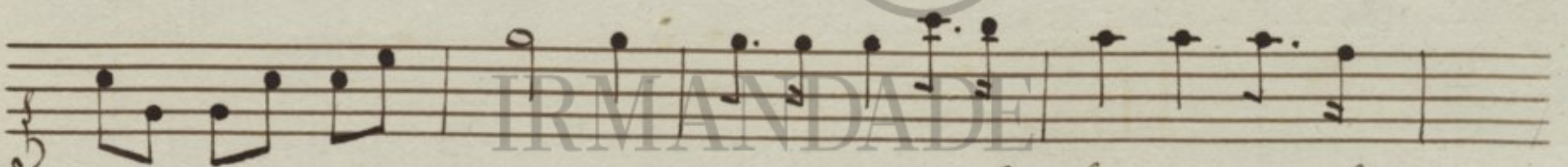


- - - mi num Al - le - lu ia

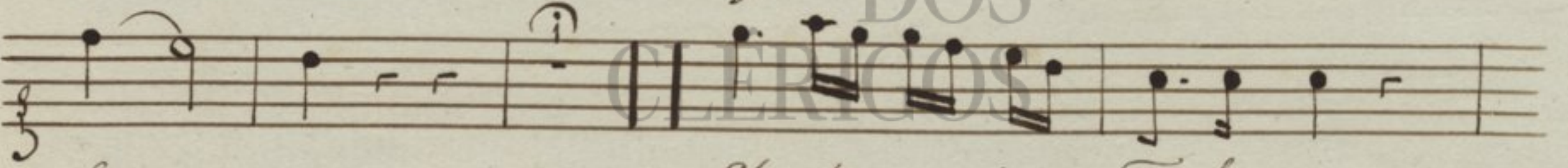
*Allegretto*



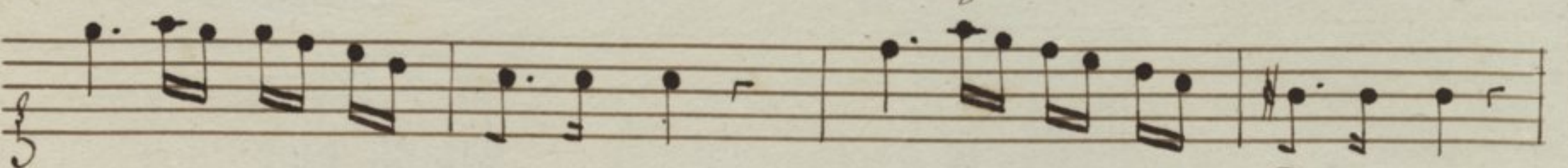
Ma - ter - ni - ta - tem be



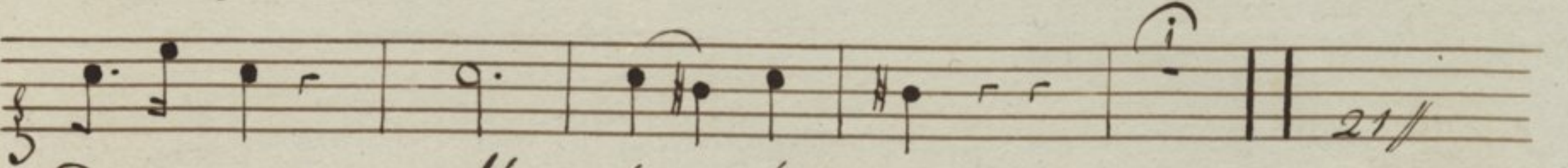
a - ta Ma ri a vir gi nis ce le bre mus ce le



bre - mus Christum e jus Fi li um



a do re mus Do mi num a do re mus Do mi num



Do mi num Al - le - lu ia

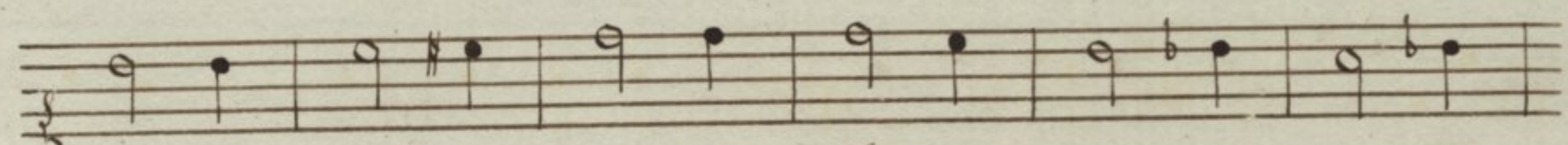
21 //



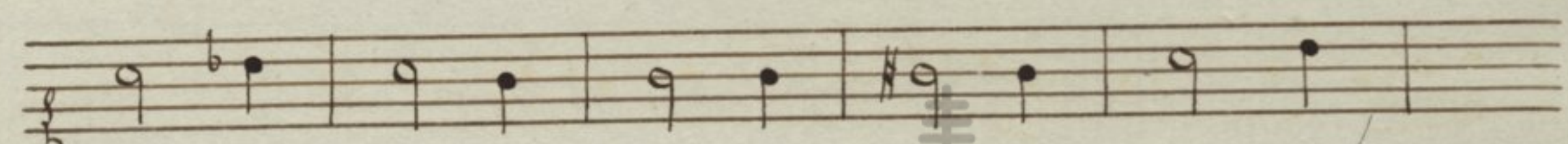
Hymno principia e Coro

2.<sup>o</sup> 

Hac virgo nobis e di



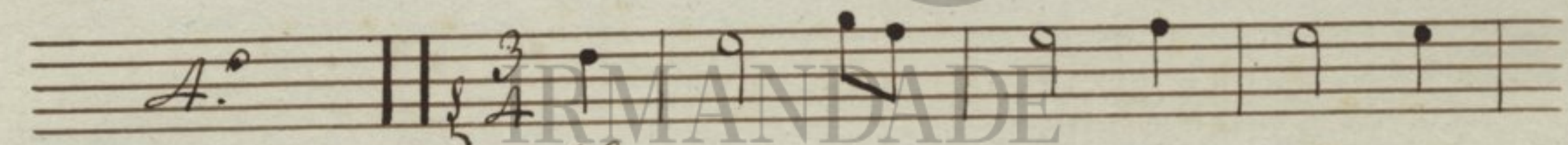
dit nos tra sa lu tis Aus pi cem qui nos re



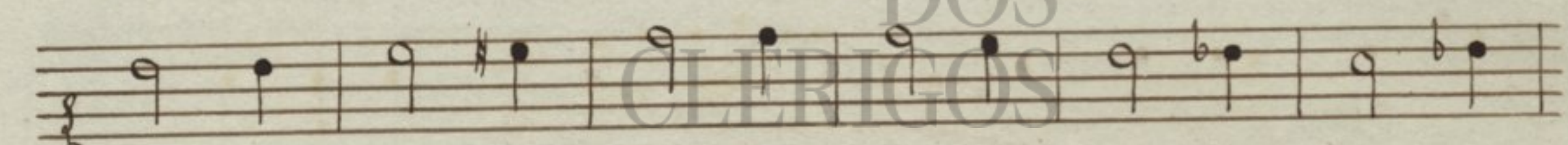
de mit san qui ne pa nas cru cem que



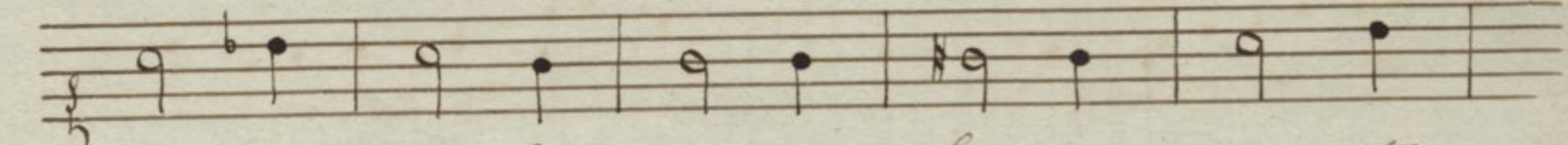
per tu lit

A.<sup>o</sup> 

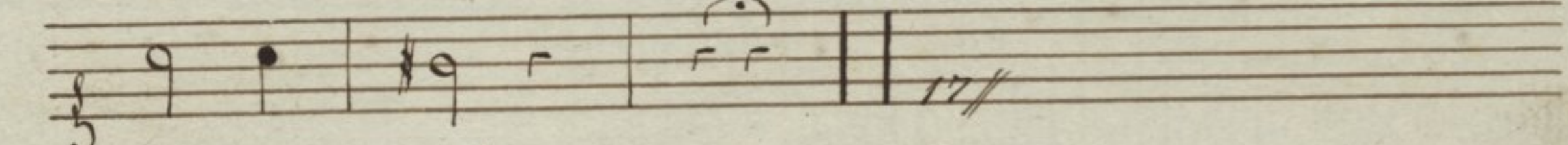
Vo ces Pa ren tis ex ci



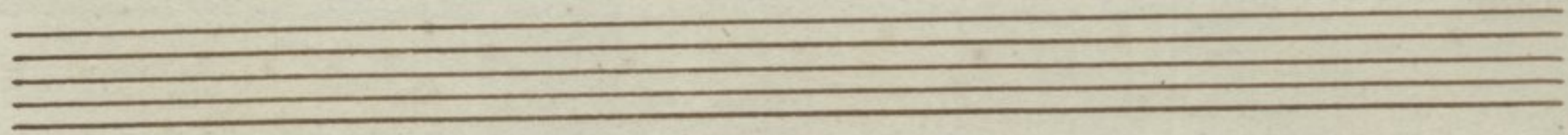
pit vo tis que Na tus an nu it hanc quis que



sem per di li gat re bus quem ar ctis



in vo cet.





1.º Noturno Responsorio 1.º

*And. mod.º* 17 All.º 17

Felix es

Alle lu ia Alle lu ia

V. Tacet, Al segno

Responsorio 2.º

*And.º con molto* 7

in ven ta es Mater

Mater Sal va to ris

*Allegretto*

in tu o se clau sit vis ce

ra fa - - - ctus ho mo Al - - - le lu

ia Al - - - le lu ia Alle lu ia Alle lu



ia

13/

*V. Tacet. Al Segno*

*Responsorio 3.*

*Alegreto*

Mul-ta fi-li-ae fi-li-ae

fi-li-ae con-gre-ga-ve-runt di-vi-ti-as mul-te

fi-li-ae con-gre-ga-ve-runt di-vi-ti-as di-

vi-ti-as tu-super-gre-ssa es su-per-gre-ssa

es u-ni-ver-sas u-ni-ver-sas.

13

*Allegro*

San-cta San-cta Sancta Sancta De-i ge-ni-tris Al-

le-lu-ia Al



le lu ia *f* Al *p* le lu ia *f* 3 32 //

V. Tacet. *Allegro* Gloria Tacet. *Allegro*

2.º Noturno, Responsorio A.º

*And. mod.º* Cu - jus *All.º 3*

Do mi num hu mi li ta - - - tem

hu mi li ta - - - tem res pe - xit res -

pe - - xit que An ge lo nun ti

an - te conce pit sal - - va to rem mun

di Al - - - le lu ia Al le lu

ia Al le lu ia 48 // V. Tacet. *Allegro*



Responso 5.

*And. con moto* 3 3

Be ne di cta Fi lia

tu a - Do mi no

com mu ni ca vi mus fru ctum vi ta

com mu ni ca vi mus per te fru ctum vi ta com mu ni

*Ad. tempo Primo*

ca vi mus communi ca -

- - - vi mus com mu ni ca - - - vi

mus. 34 //

*Allegretto* 2 5

So la So - la

so - la si ne ex em plo pla cu is ti



*Domino nostro Iesu Christo Al - - - - -*  
*- - - - - le lu ia Al le lu ia Al le lu ia.*

*V. Tacet. Al Segno*

*Responsorio 6.º*

*And. mod.º* *Be ne di cta in ter mu*

*li e res be ne di cta in ter mu*

*li e res et be ne - di ctus*

*be ne di ctus fructus fructus ven tris*

*fructus ven tris ven tris tu i*

*Alegreto* *Un de hoc mi hi ut ve ni*



at Mater Do mi ni me i ad me Alle lu  
 ia Alle lu ia Al - - - -  
 - - - - le lu ia Alle lu ia Alle lu  
 ia

V. Tacet, Al Segno Gloria Tacet, Al Segno

3.º Noturno IRM.º Responsorio 7.º

And.º mod.º Be a ta es

vir go es vir go Ma ri a De - i ge ni

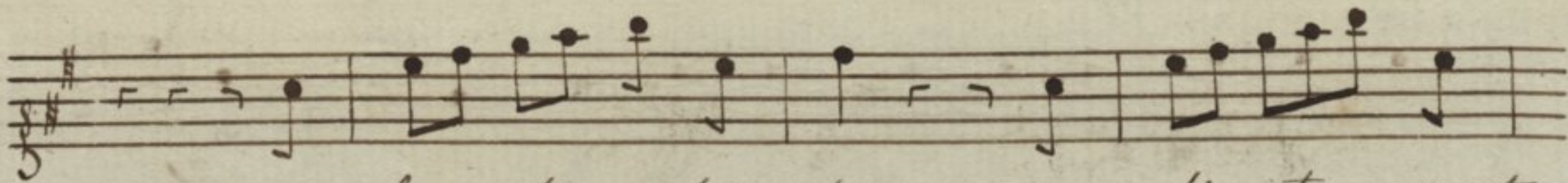
tris be a ta es be. a ta es

cre di dis ti cre di dis ti Do mi num

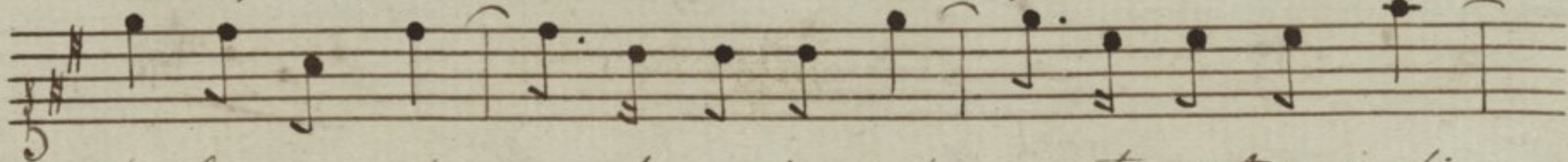
IRM.º DOS CLÉRIGOS

qua 13

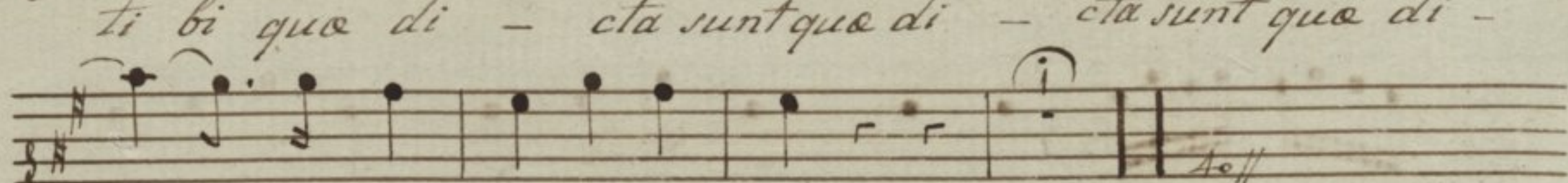




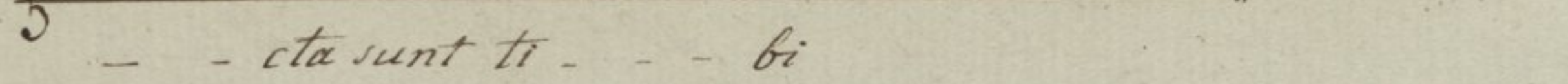
per fe - cta sunt in te



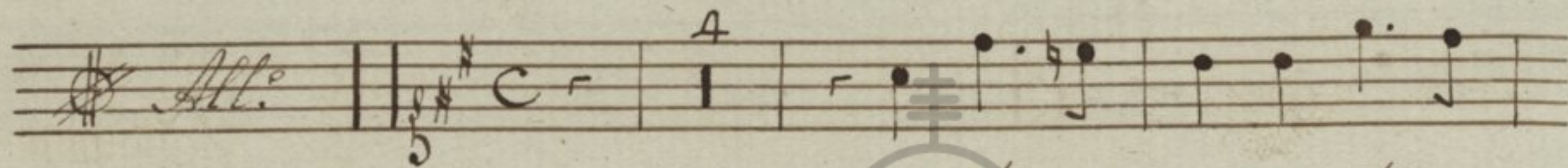
qua di cta - sunt



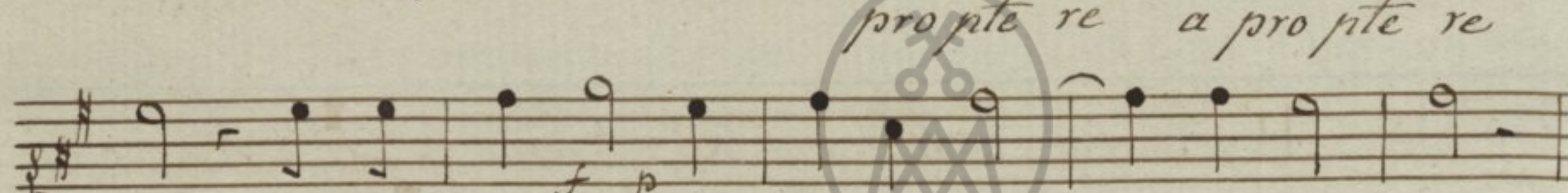
ti bi qua di - cta sunt



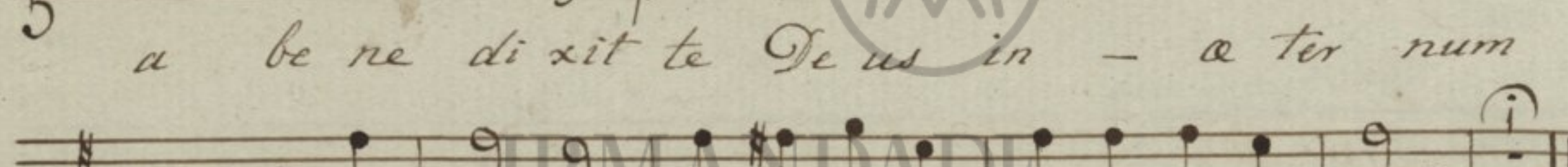
qua di - cta sunt



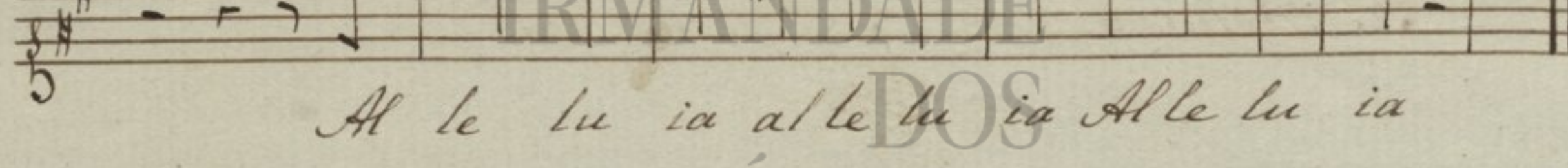
qua di - cta sunt ti - bi



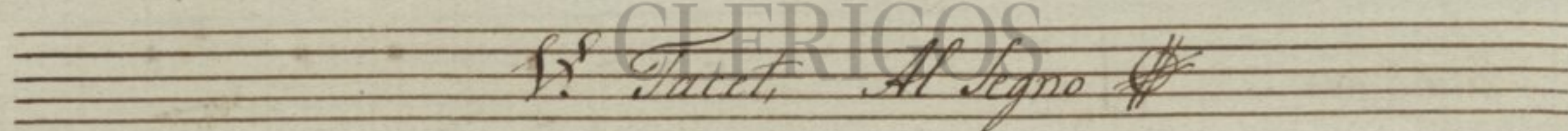
pro pte re a pro pte re



a be ne di xit te Je us in - a ter num



Al le lu ia al le lu ia Al le lu ia



V. Tacet, Al Segno







IRMANDADE  
DOS  
CLÉRIGOS





IRMANDADE  
DOS  
CLÉRIGOS