

Alto de Prepieno

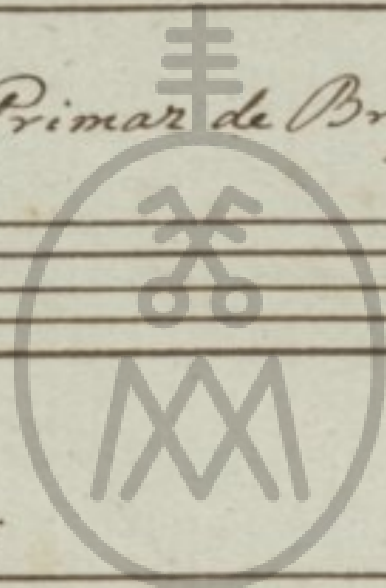
Matinas da Maternidade de N. Sra.

a 4 vozes e Org.

Dedicadas

AO Ill. mo e R. mo Sr. Ant. Mor. a

Corigo da 1.ª Sé Primaz de Braga.



por

Antonio da S.ª Leite

IRMANDADE
Mestre da Capella da 1.ª Sé

do

DOS
Posto
CLÉRIGOS

1811

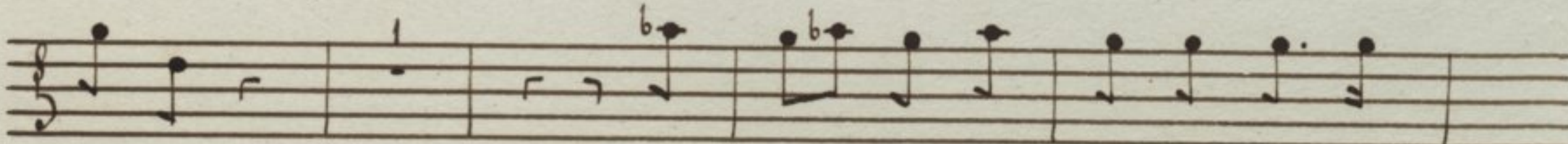
Alto de Repleto

Invitatorio

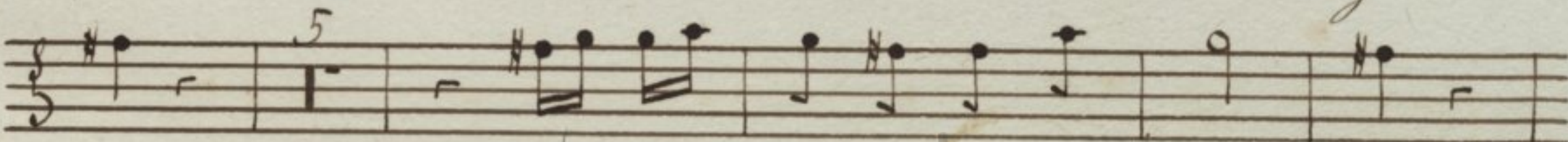
Adagio $\frac{2}{4}$



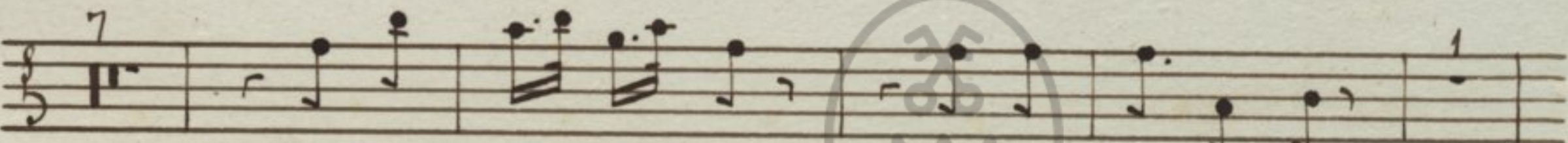
Mater ni ta tem Ma ter ni



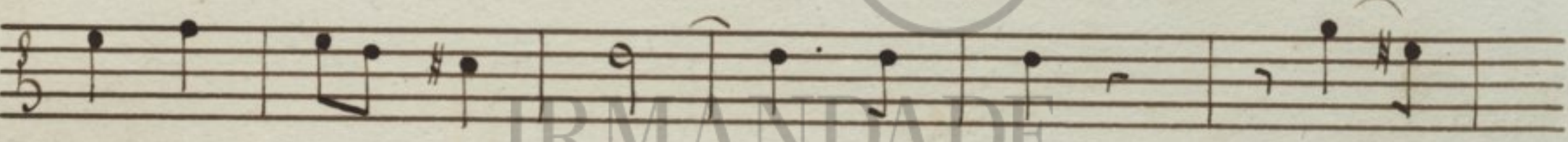
ta tem be a te Ma ri a vir gi



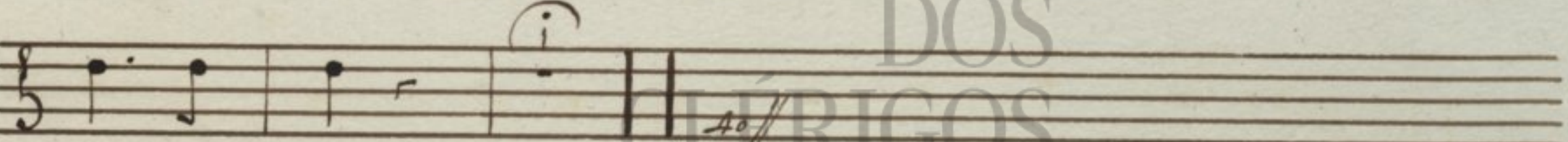
nis ce le bre mus ce le bre mus



Christum e - - - jus e jus Fi li um



a do re mus Do - - - mi num Al - - -

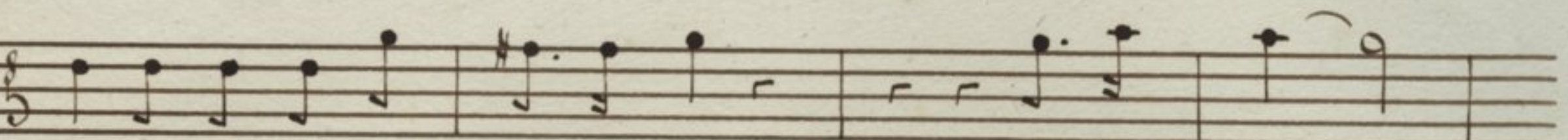


le lu ia

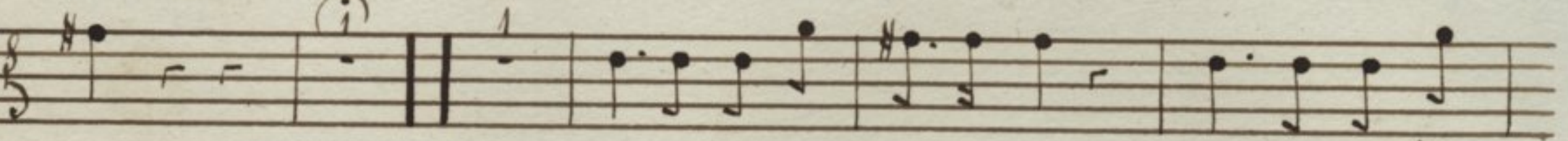
Alegreto $\frac{3}{4}$



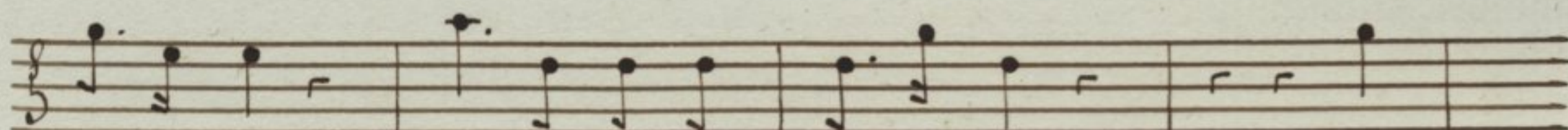
Mater ni ta tem be



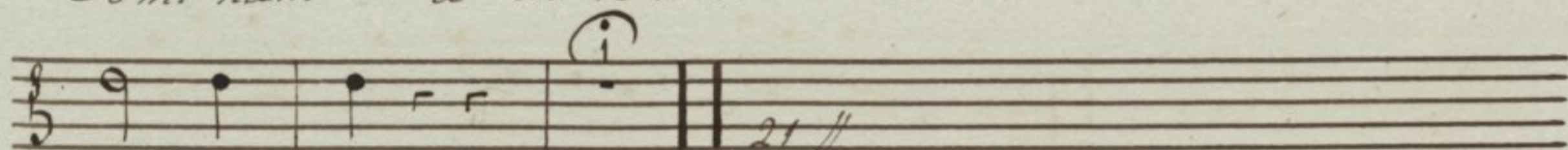
a te Ma ri a vir gi nis ce le bre - - -



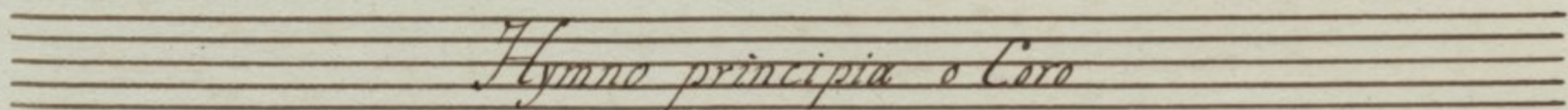
mus Christum e jus Fi li um a do re mus



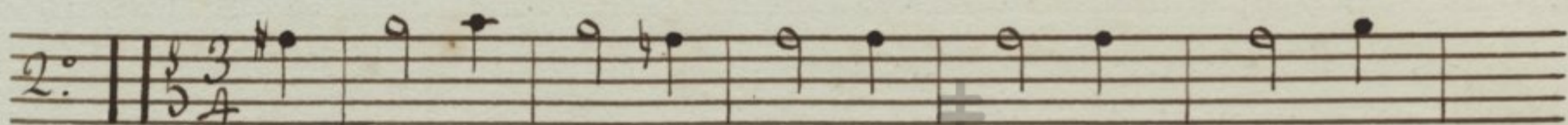
Do mi num a do re mus Do mi num *Al*



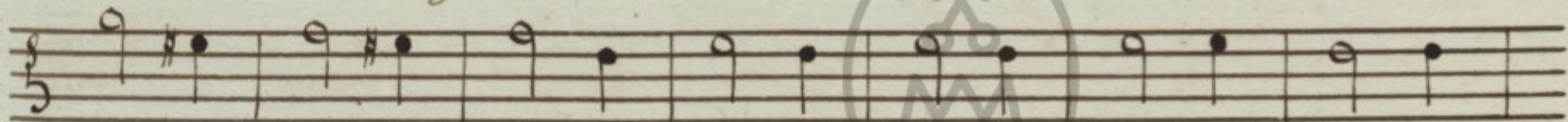
le lu ia



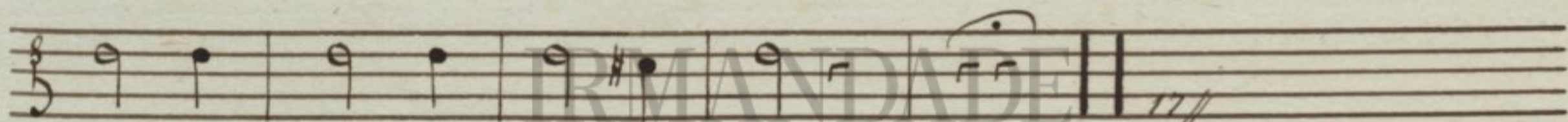
Hymno principia o Coro



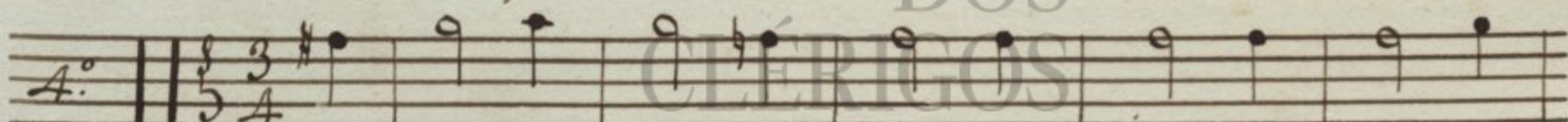
Hoc virgo no bis e di dit nos tra sa



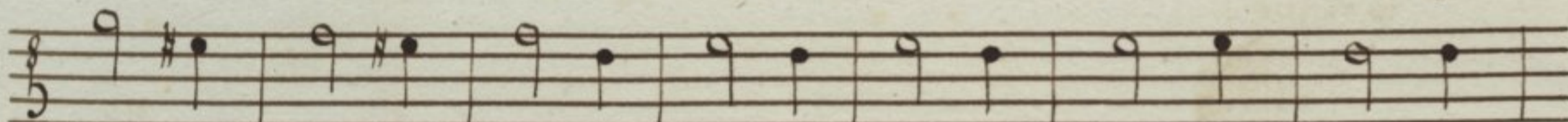
lu tis Aus pi cem qui nos re de mit san qui ne pa



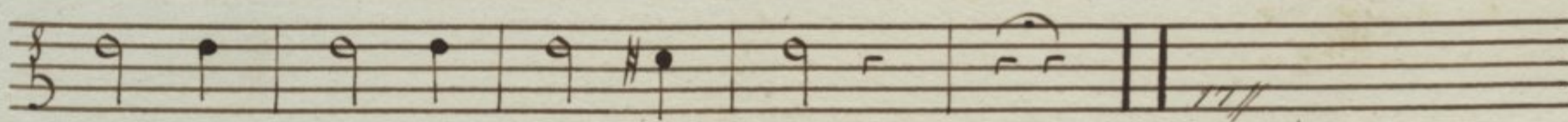
nas cru cem que per tu lit.



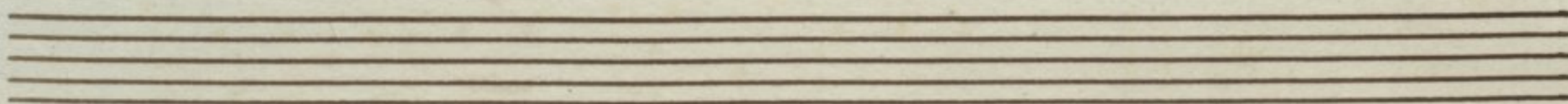
So ces Pa ren tis ex ci pit vo tis que



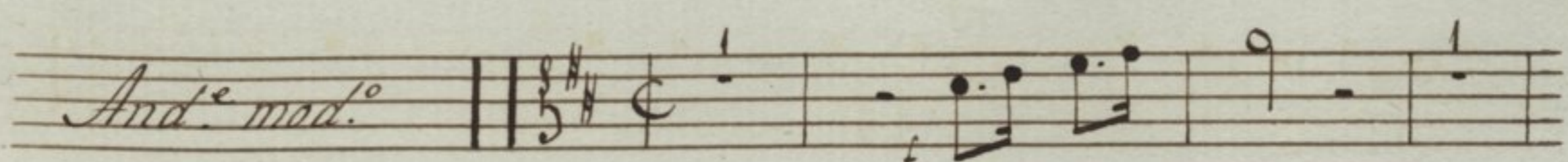
Na tus an nu it hanc quis que sem per di li gat re



bis quem ar ctis in vo cet.



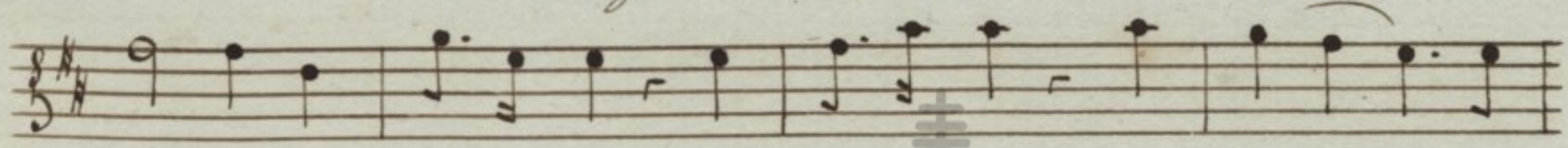
1.º Noturno Responssorio 1.º

And.º mod.º 

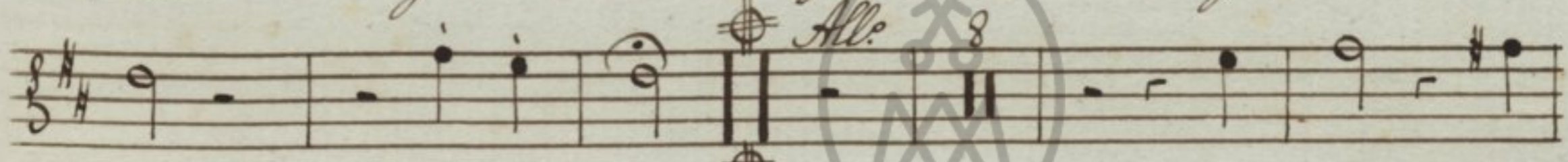
Felix es



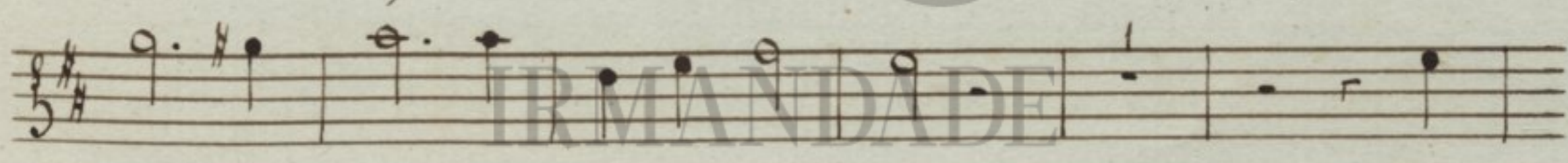
Sacra virgo Maria et omni




laude digni ci ma di gni ci ma di gnis - - si



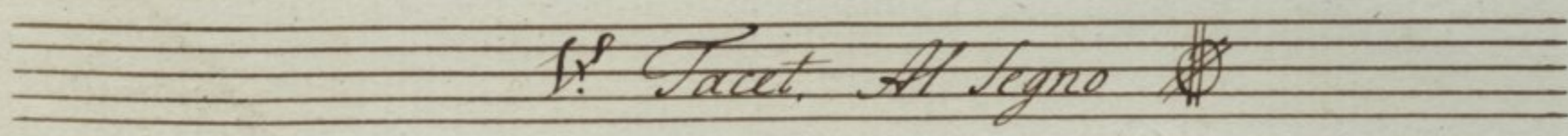
ma Felix es per quem Sal



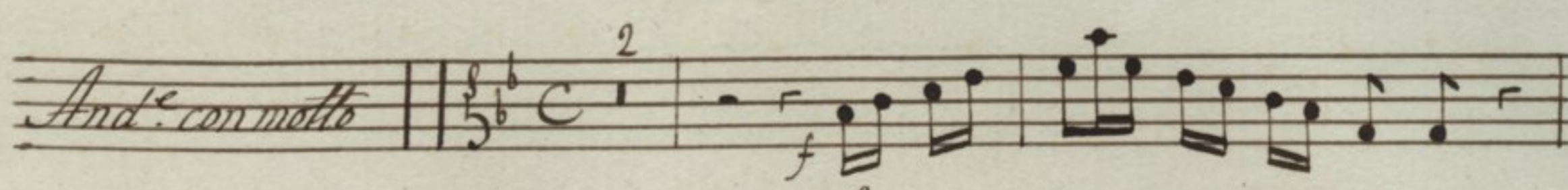
va ti et re dempti su mus Al



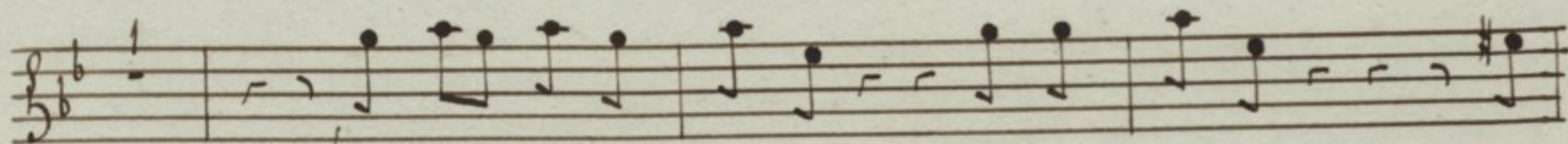
le lu ia Al le lu ia Al le lu ia

V.º Tacet. Al Segno 

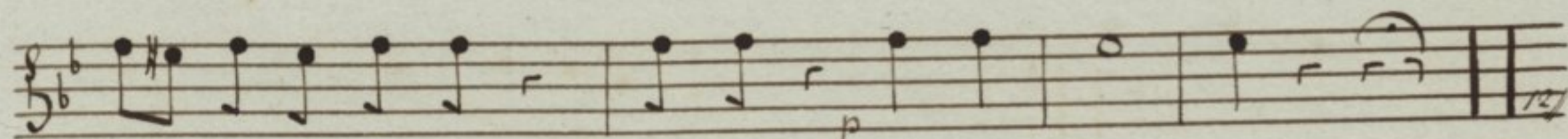
Responssorio 2.º

And.º con molto 

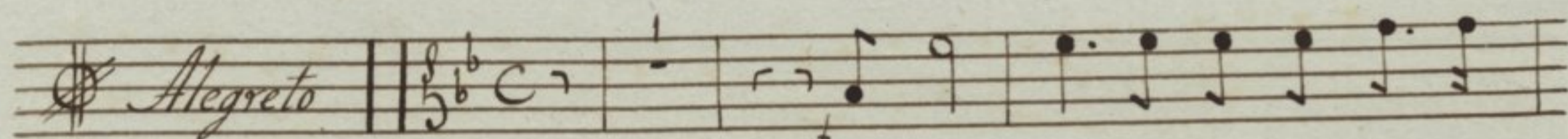
Si ne ta ctu pu do ris



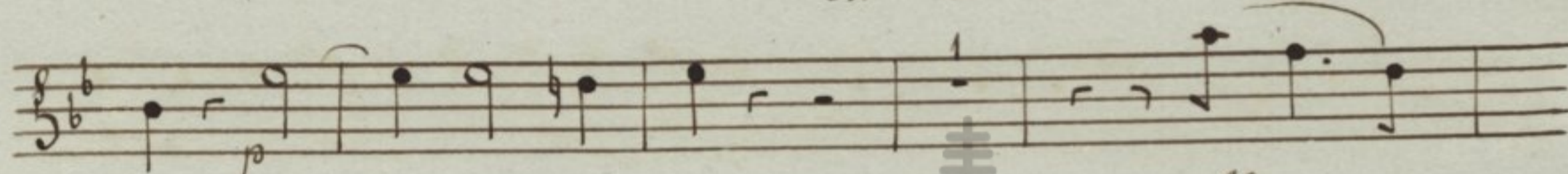
in ven ta es Ma ter Salva to ris in



ven ta es Ma ter Mater Salva to ris



in tu o se clau sit vis ce

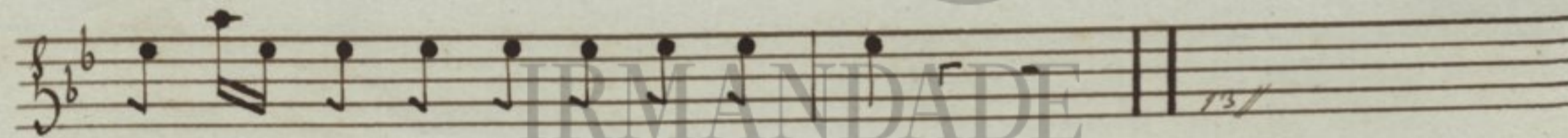


ra fa ctus ho mo

Al



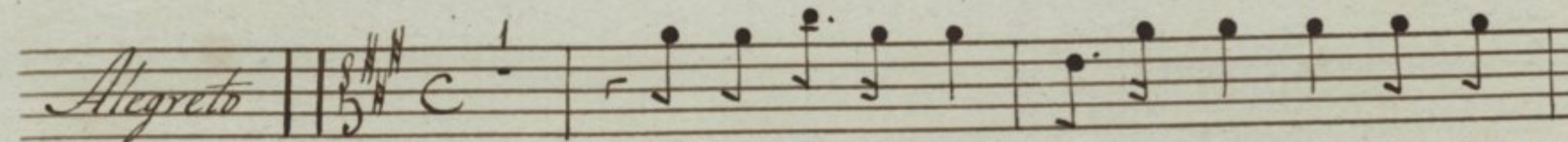
le lu ia Al le lu



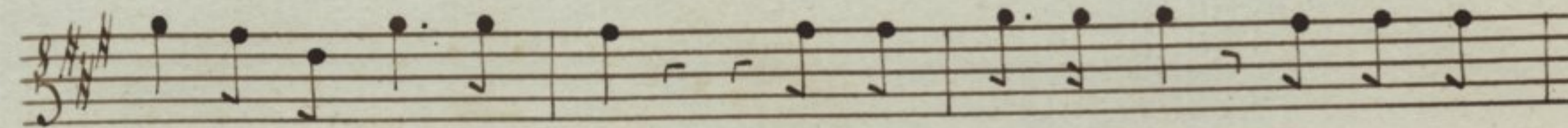
ia Al le lu ia Al le lu ia

1^o Tacet. Al Segno

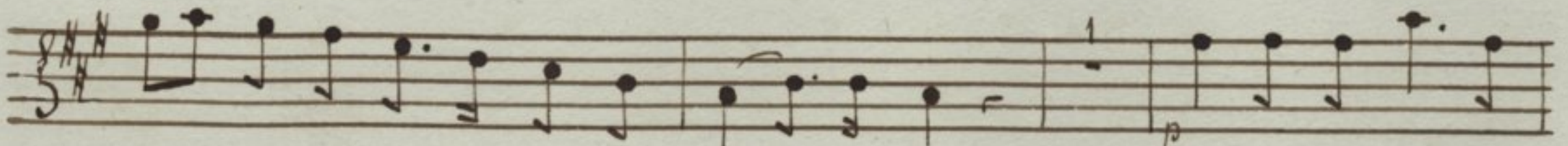
Responsorio 3^o



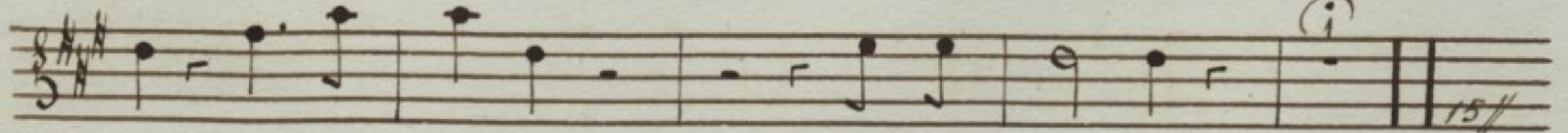
Mul te fi li a fi li a con gre ga



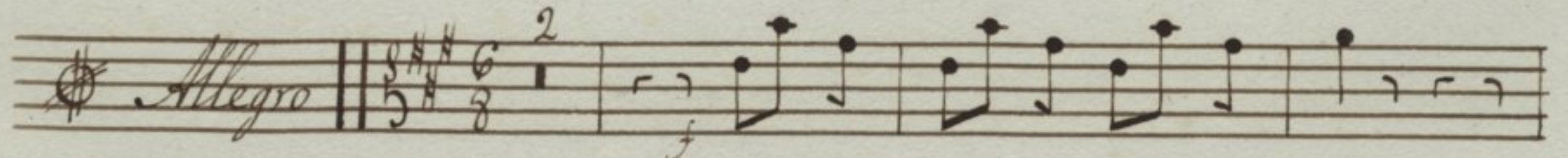
verunt di vi ti as mul te fi li a con gre ga



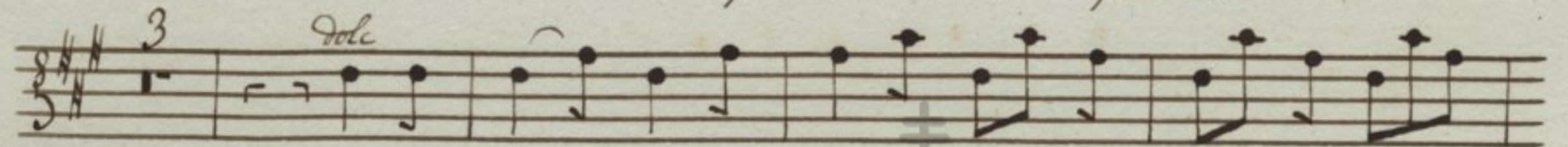
ve runt di vi ti as di vi - ti as tu supergressa



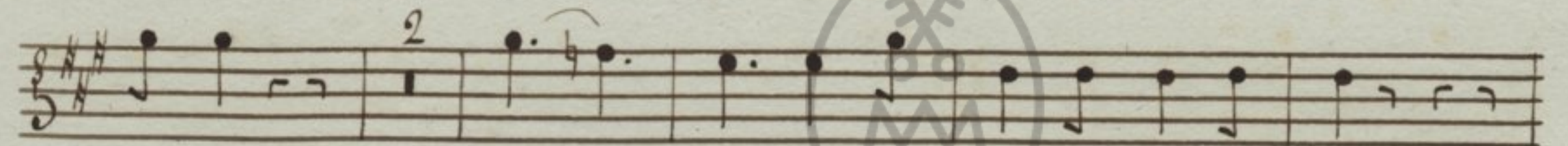
es u ni ver sas u ni ver sas



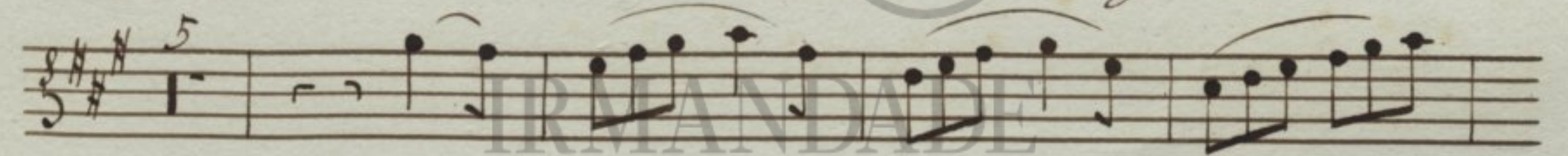
Spe ci o sa fa cta es



et su a - vis su a vis in de li ci is



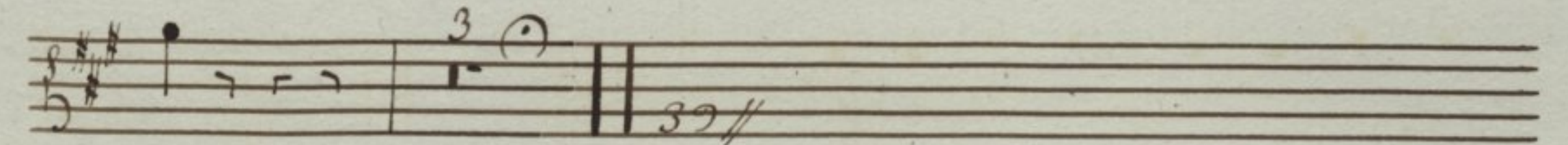
tu is San - cta San cta De i ge ni tris



Al - - - - -

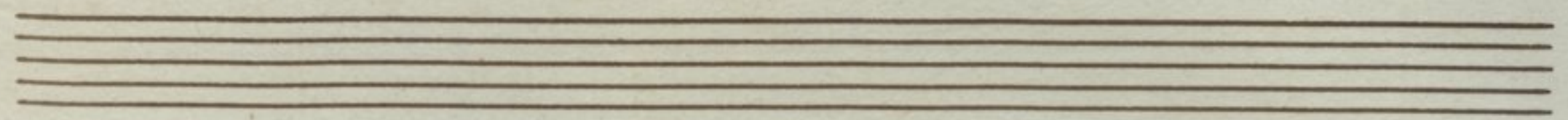


le lu ia Al le lu ia Al le lu



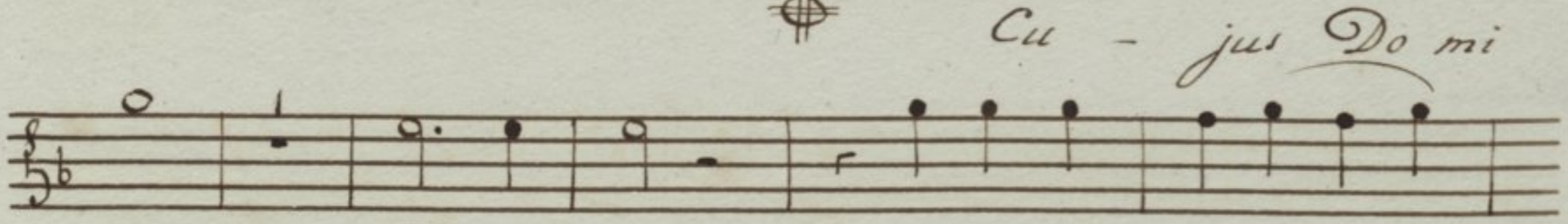
ia

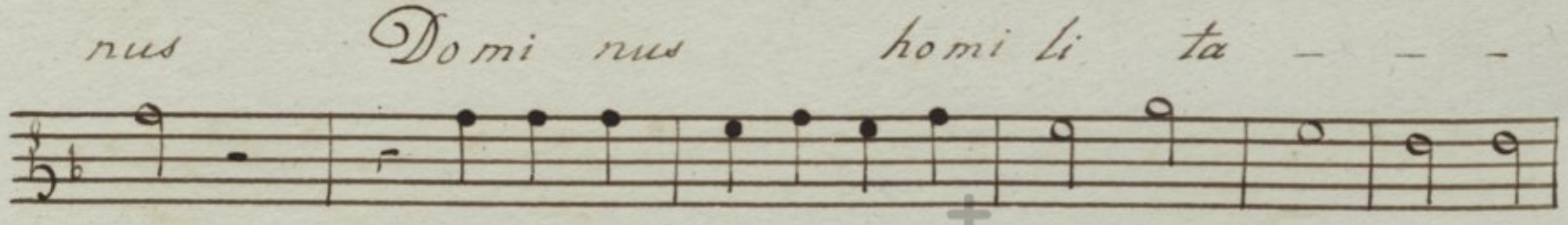
V. Tacet. Al. legno Gloria Tacet. Al. legno

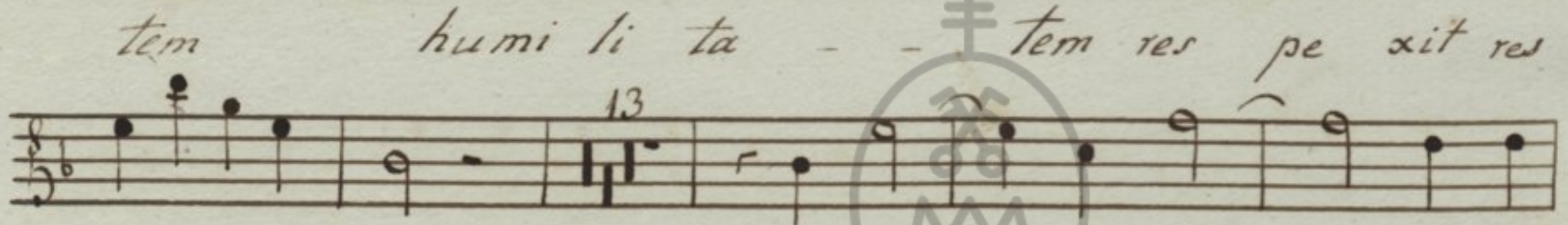


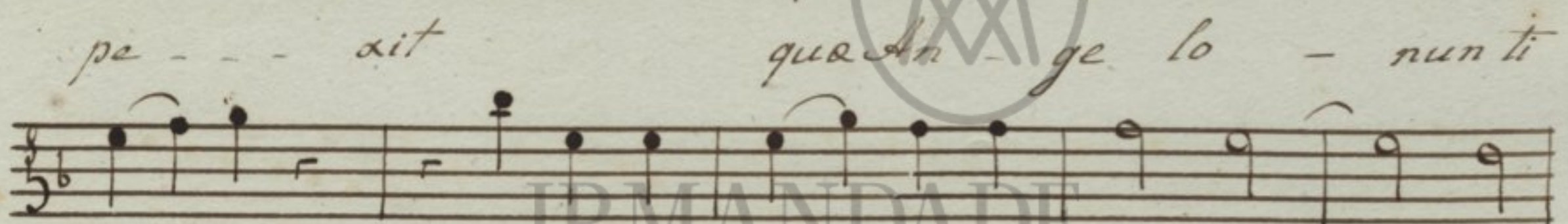
2.º Noturno, Preponatorio A.º

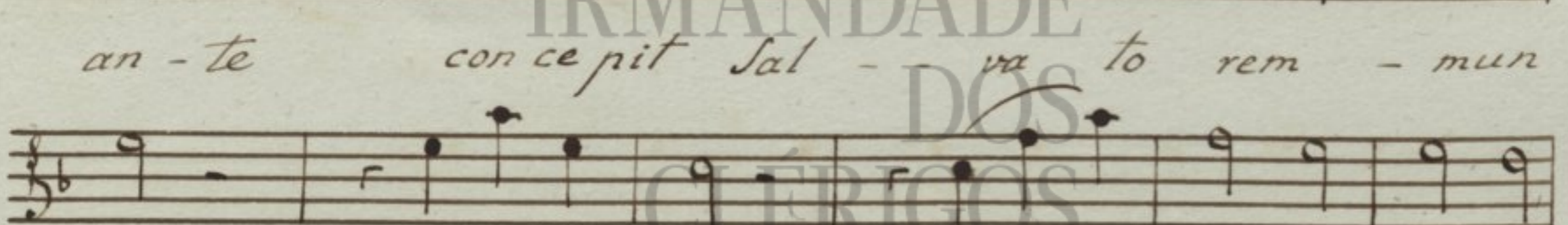
And.º med.º  All.º 

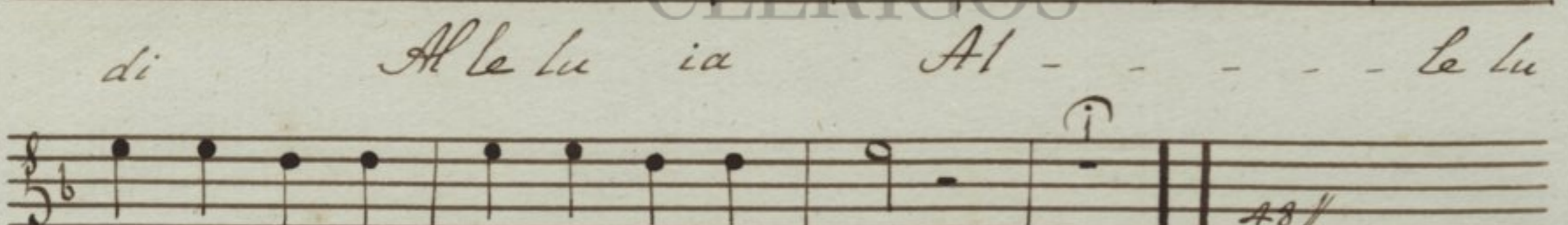
 Cu - jus Do mi

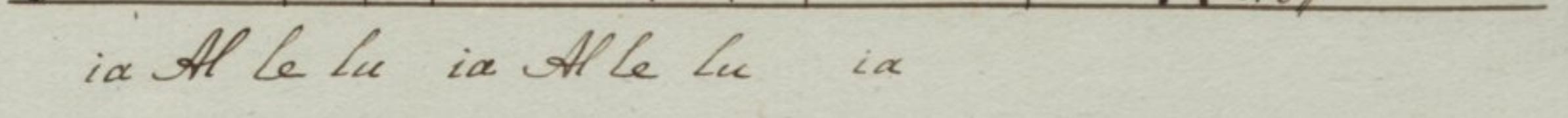
 nus Do mi nus homi li ta - - -

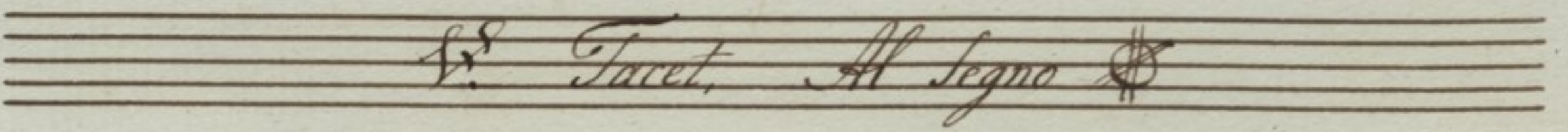
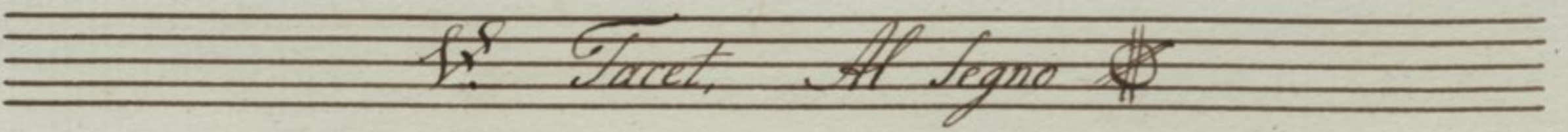
 tem humi li ta - - - tem res pe xit res

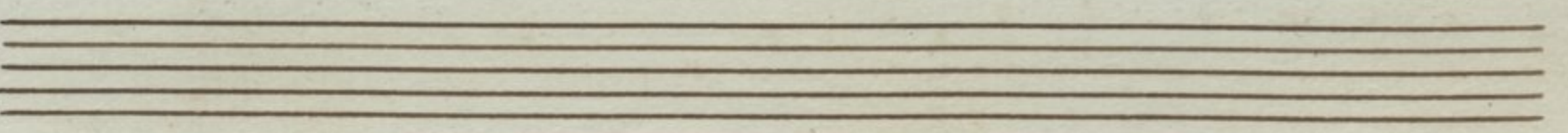
 pe - - - xit que An - ge lo - nunti

 an - te con ce pit Sal - va to rem - mun

 di Alle lu ia Al - - - - le lu

 ia Alle lu ia Alle lu ia

 V.º Tacet, Al segno 



Responso 5^o

And.^e con motto ||| 3/4 ³

Be ne di cta Fi lia

tu a Do mi no qui a per

te - fru ctum vi ta fru ctum vi te com mu ni ca vi mus

qui a per te fru ctum vi ta Com mu ni ca - - -

Ad.^o *tempo primo*

- - vi mus Com mu ni ca - -

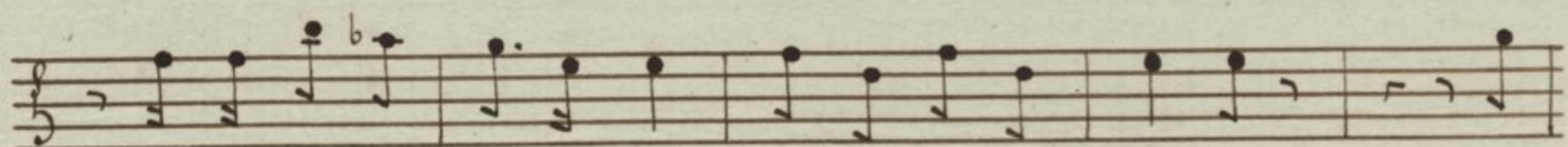
- - vi mus co mu ni ca - - - - - vi

mus.

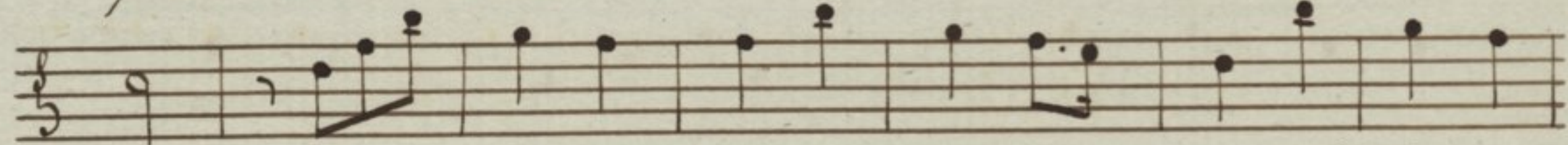
Alegreto ||| 2/4 ⁵

placu is ti Do mi no

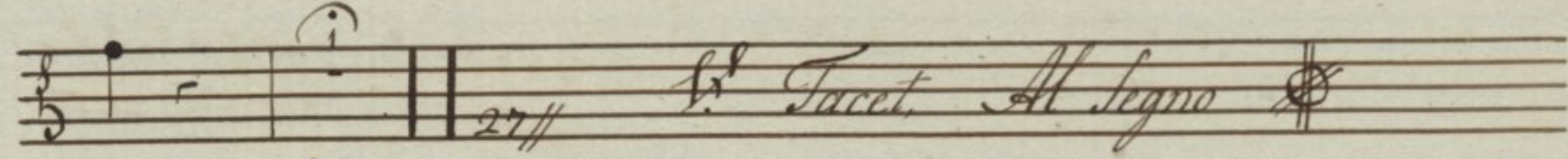
nos tro Je su Chris to So la si ne ex em plo



placuis ti Do mi no nos tro Je su chris to Al



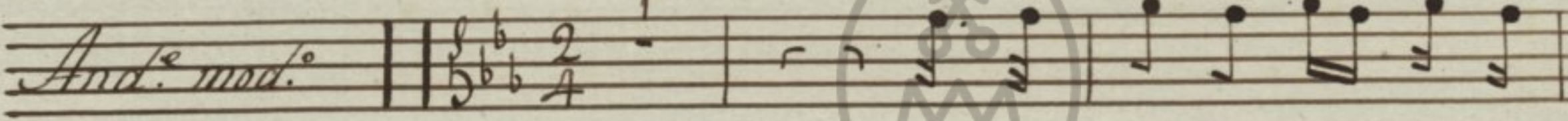
le lu ia Al le lu - ia Al le lu



ia

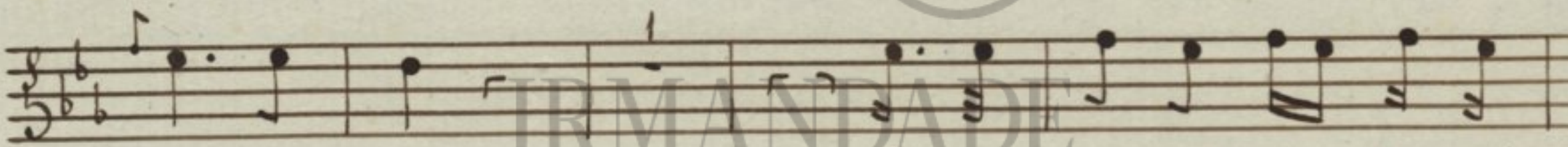
27// 1. Tacet. Al segno

Responsorio 6.º



And. mod.º

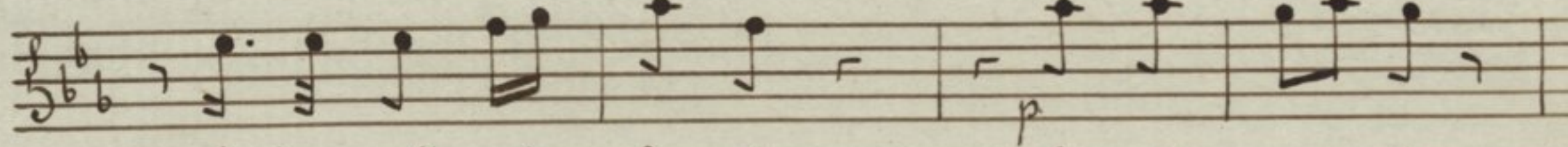
Be ne di cta in ter mu-



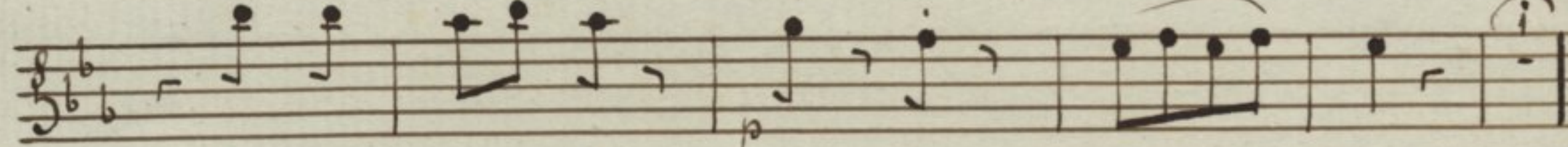
li e res be ne di cta in ter mu



li e res et be ne - di ctus



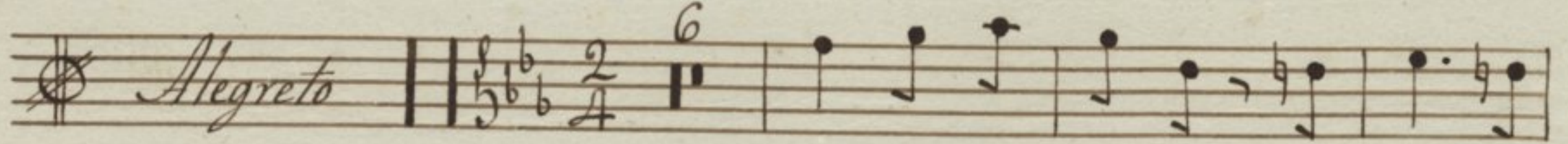
be ne di ctus fru ctus fru ctus ven tris



fru ctus ven tris ven tris tu - - i

22

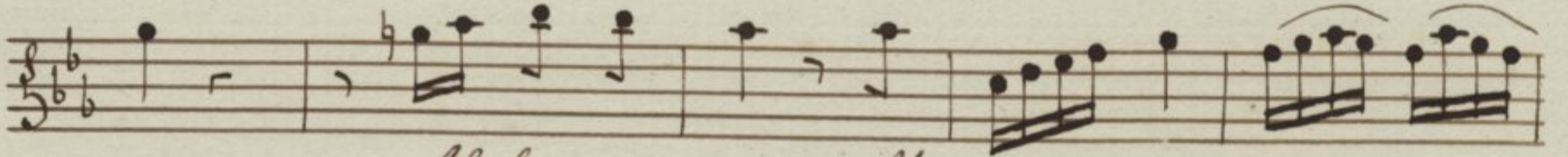
Alti Subito

Alegreto 

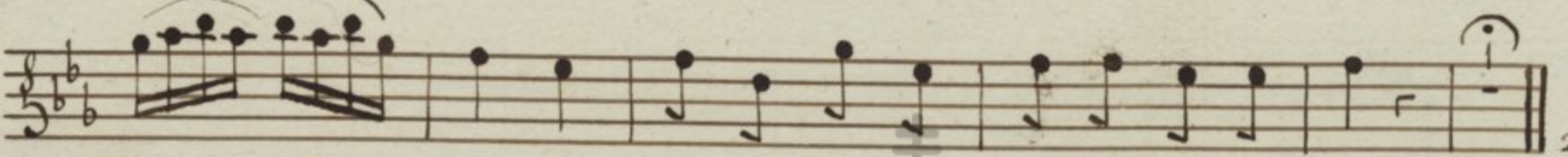
Un de hoc mi hi ut ve ni



at Ma ter - Do mi ni me - i ad me Alle lu

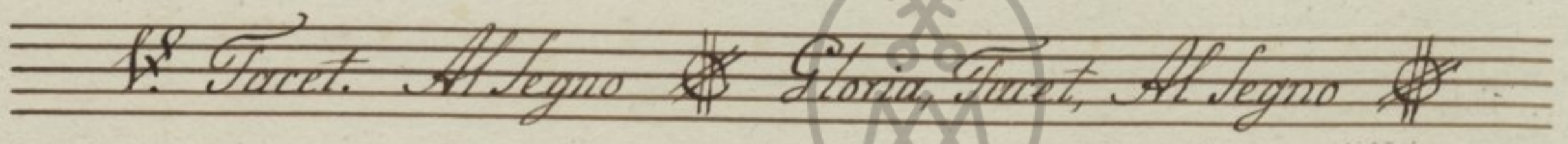


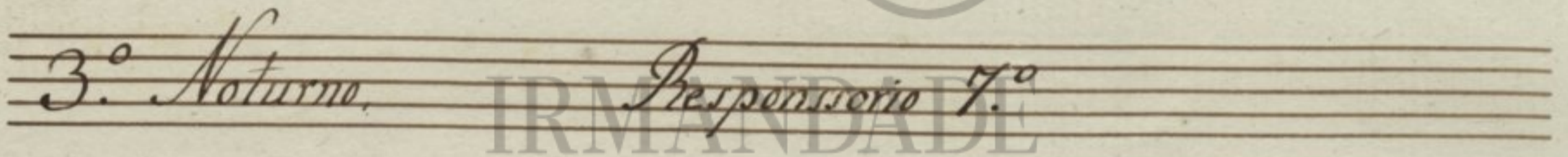
ia Alle lu ia Al - - - - -



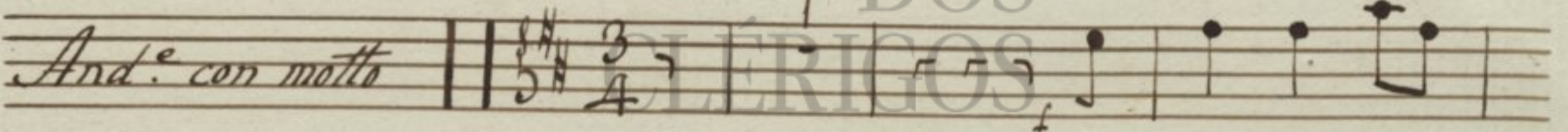
- - - - - le lu ia Alle lu ia Alle lu ia

25 //

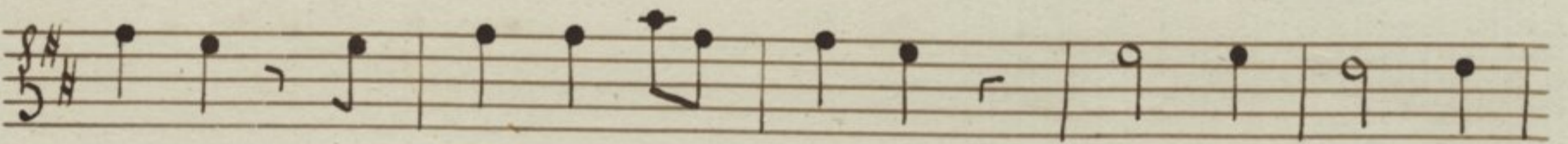
V. Tacet. Al Segno & Gloria, Tacet, Al Segno 

3.º Noturno, Responsorio 7.º 

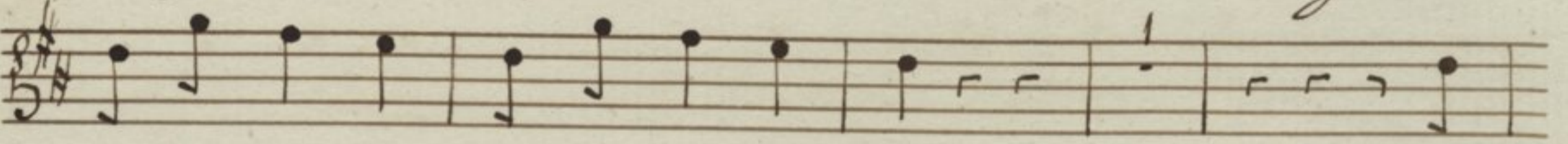
IRMANDADE DOS CLERIGOS

And.º con molto 

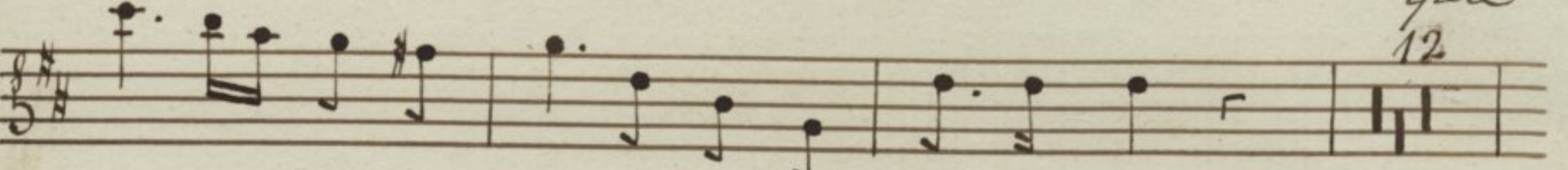
Be a ta es



vir go es vir go Ma - ri a De i ge ni

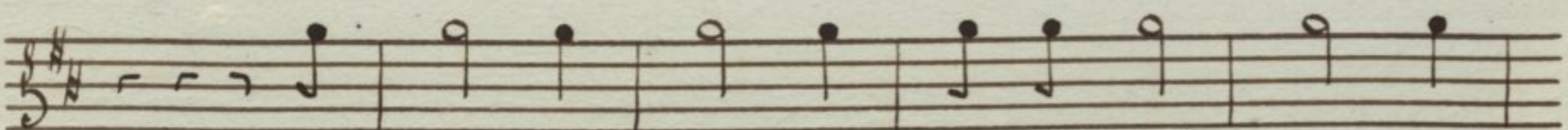


trix be a ta es be a ta es

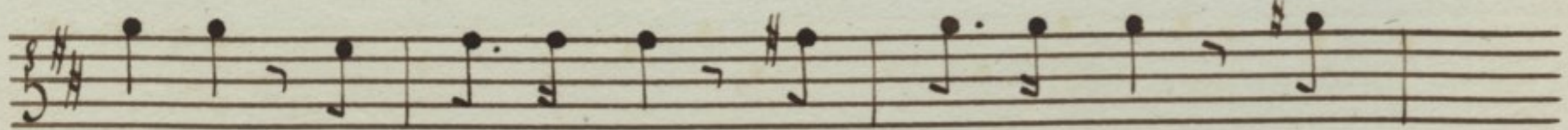


qua
12

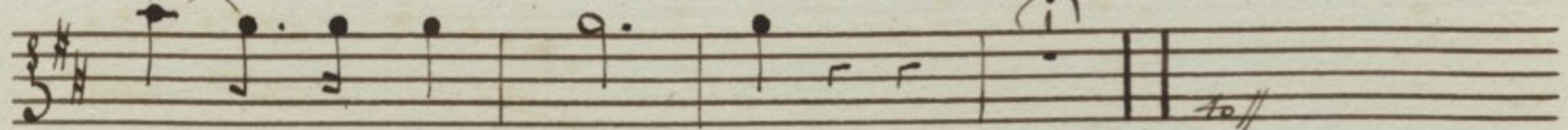
cre di dis ti cre di dis ti Do mi no



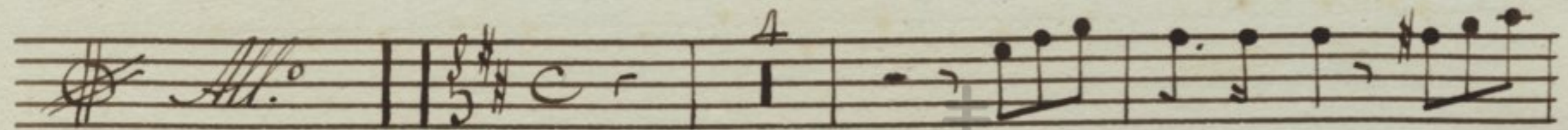
per fe cta sunt in te que di cta sunt



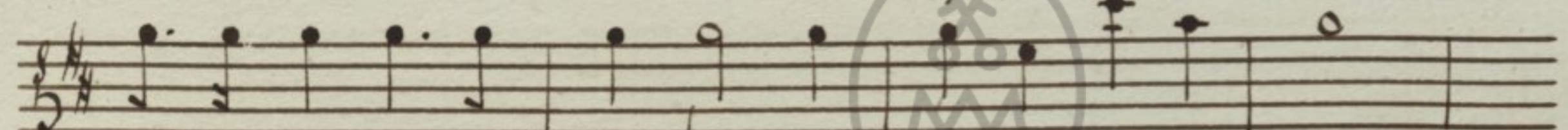
ti bi qua di cta sunt qua di cta sunt qua



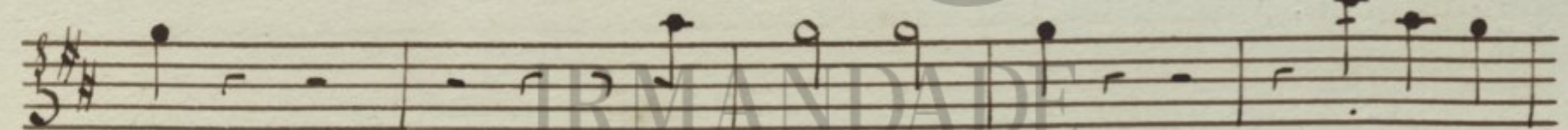
di - cta sunt ti bi



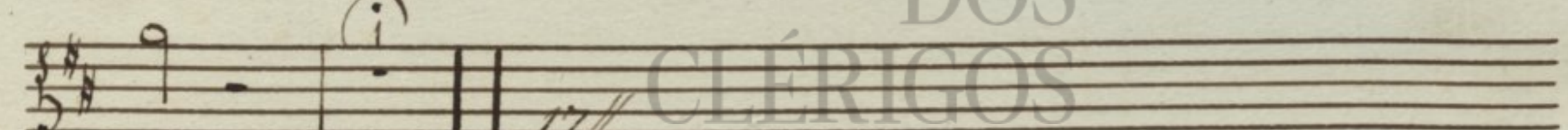
pro - pte re a pro -



te re a be ne di xit te Deus in a ter

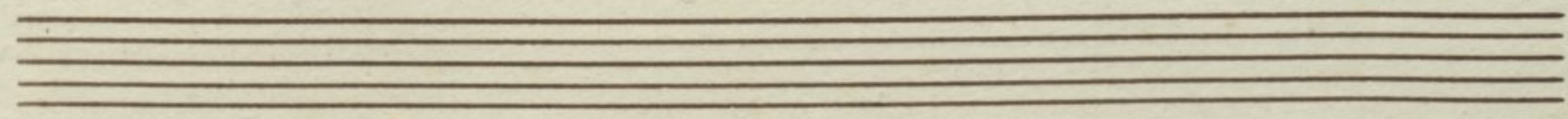
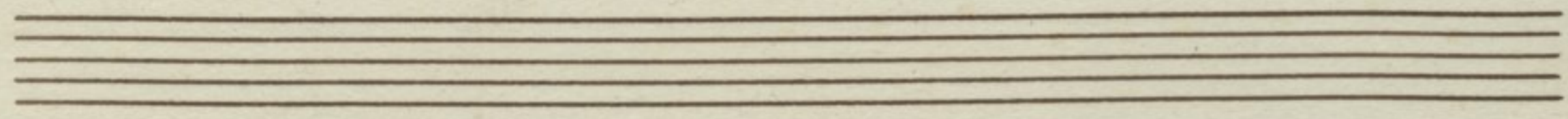


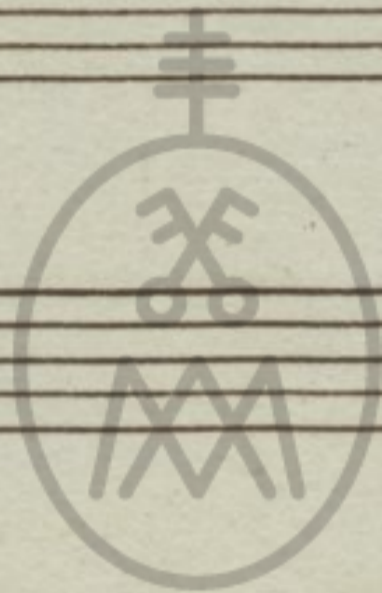
num Al le lu ia Al le lu



ia

V. Tacet. Al Segno





IRMANDADE
DOS
CLÉRIGOS



IRMANDADE
DOS
CLÉRIGOS



IRMANDADE
DOS
CLÉRIGOS