

Tenor de Repieno

Matinas da Maternidade de N. Sra.

a 4 vozes e Org.

Dedicadas

Ao Ill. Mo. e R. Mo. Sr. Antonio Moreira

Conigo da Sta. Se. Primas de Braga

por

IRMANDADE
Antonio da Silva Leite

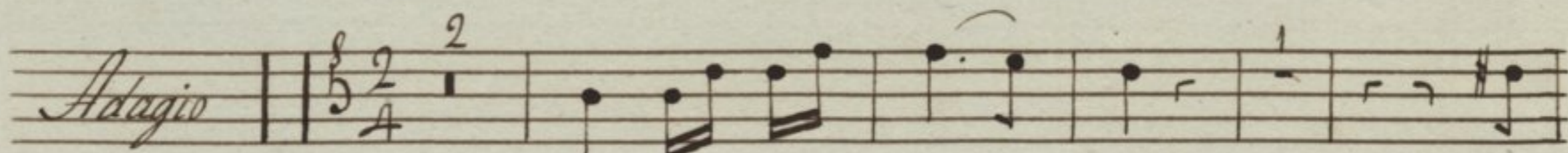
Mestre da Capella da Sta. Se.

DOS
CLÉRIGOS
do
Porto

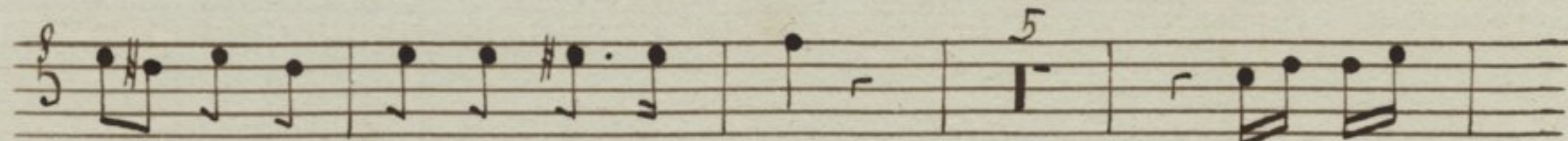
1811

Tenor de Prepieno

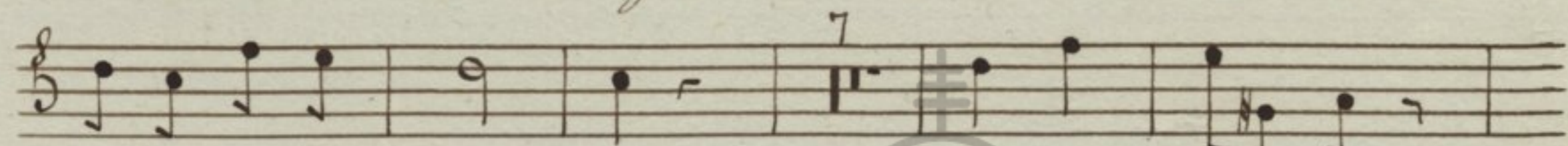
Invitatorio



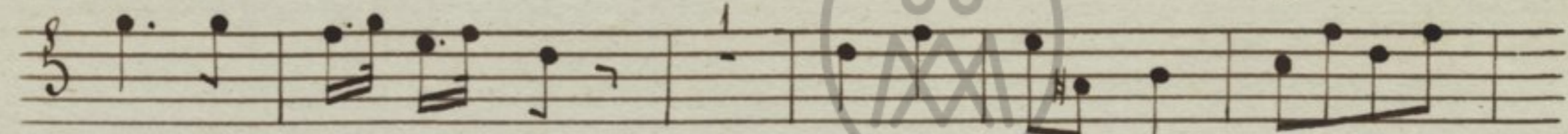
Mater ni ta - tem be



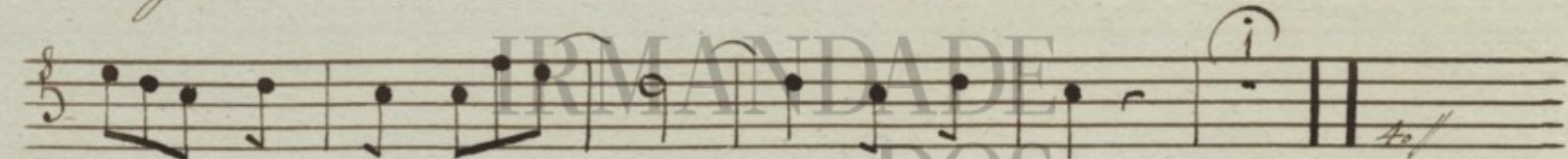
a te Ma ri a vir gi nis ce le -



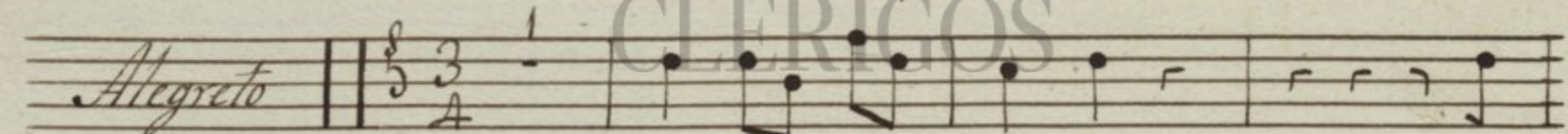
bremus ce le bre mus Christum e - jus



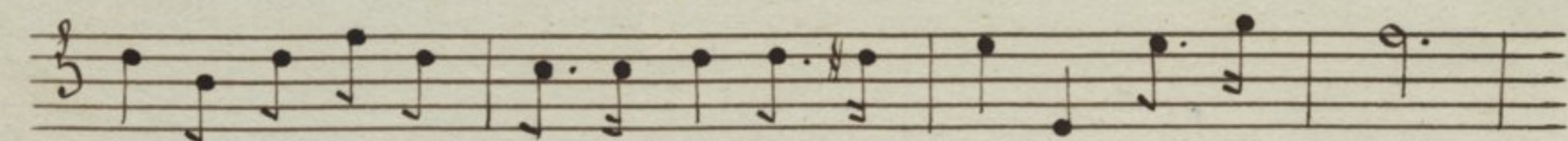
e jus Fi li um a do re - mus Do - -



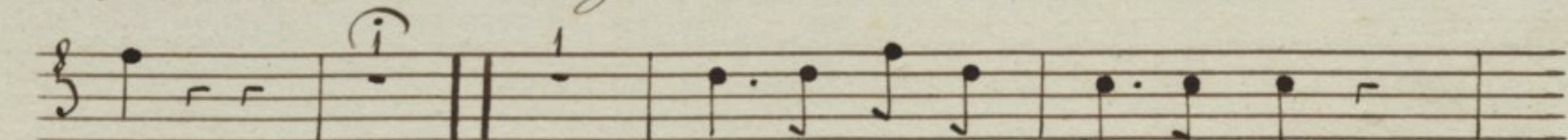
- - mi num Al - - - - le lu ia



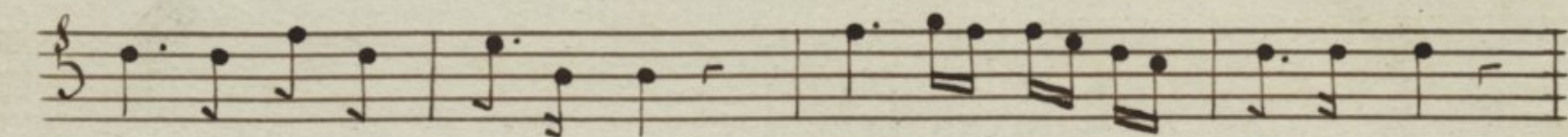
Mater ni ta tem be



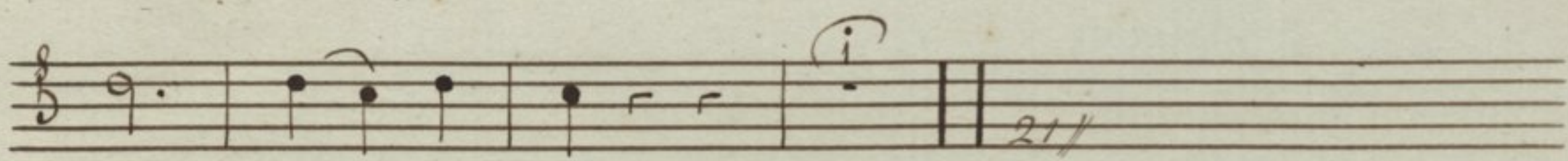
a te Ma ri a vir gi nis ce le bre mus ce le bre



mus Christum e jus Fi li um

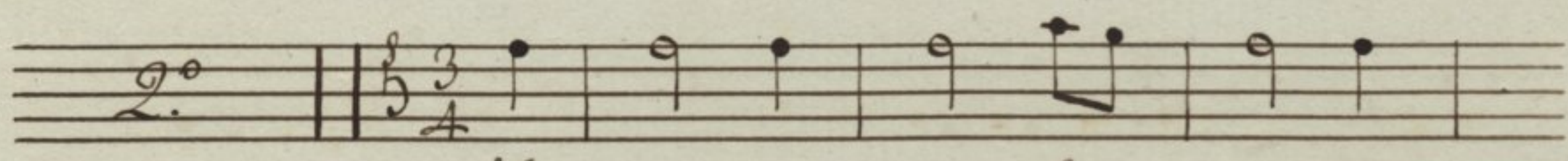


a do re mus Do mi num a do re mus Do mi num

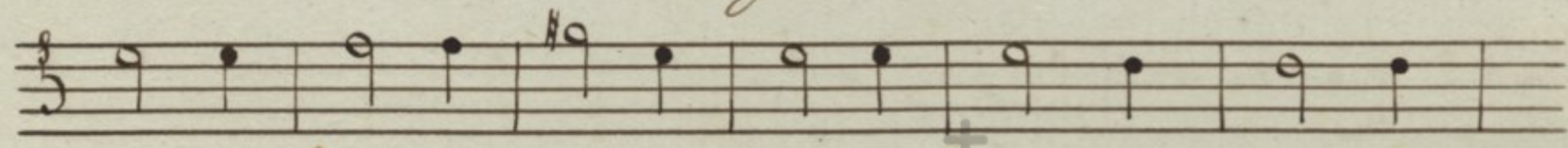


Al - le - lu - ia

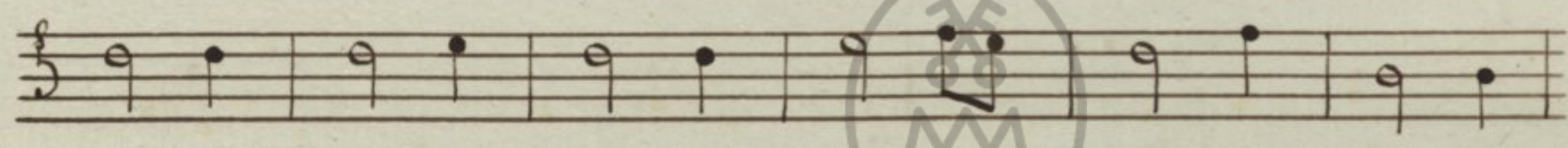
Hymno, principia o Coro



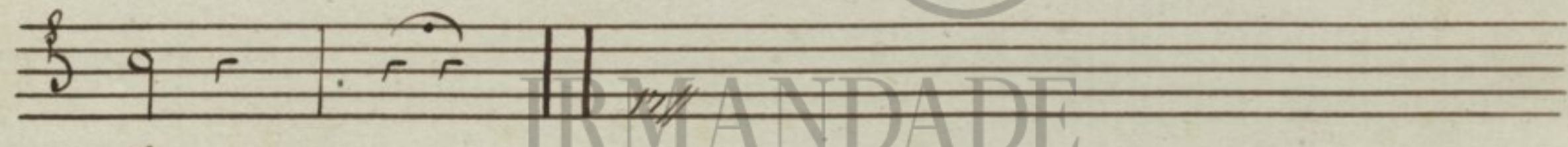
Hoc Vir go no bis - e di



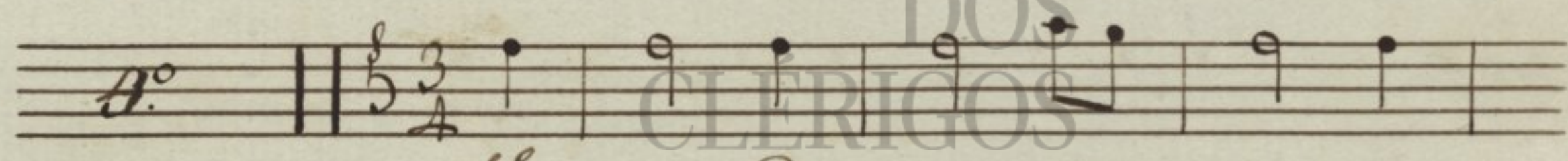
dit non tra sa lu tis Aus pi cem qui non re



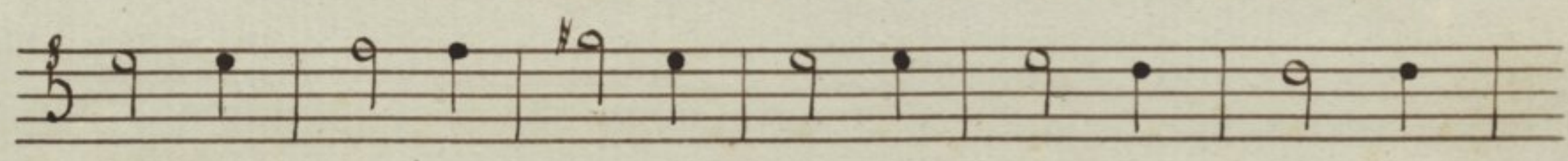
de mit San qui ne pa nas cru cem que per tu



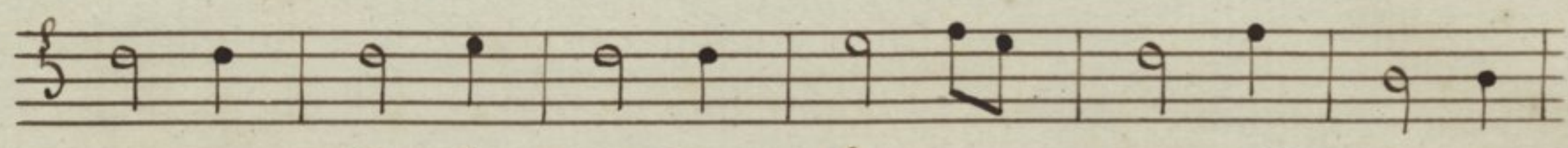
lit.



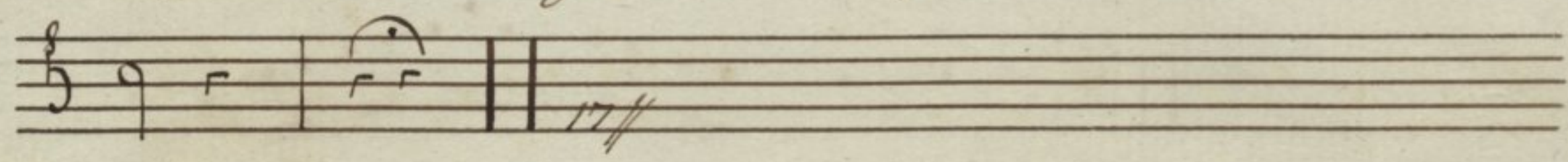
Vo ces Pa ren tis - ex ci



pit vo tis que Na tus an nu it hanc quis que



sem per di li gat re bus quem ar ctis in vo



cet.

1.º Noturno

Responssorio 1.º

And.º mod.º || 

f Fe - lix es Sa - cra



vir - go Ma - ri - a et om - ni



lau - de di - gnis - si - ma di - gnis - si - ma di - gnis - si



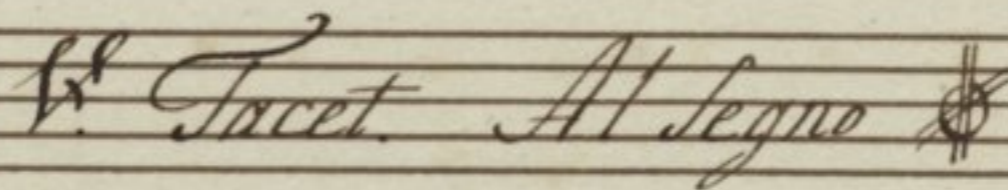
ma - fe - lix es per quem - sal - va



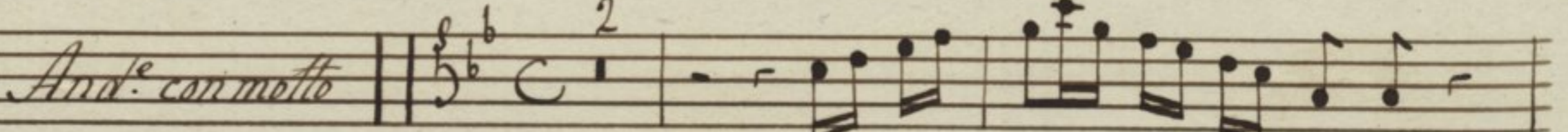
- ti et - re - demp - ti su - mus *Al*



le - lu - ia Al - le - lu - ia Al - le - lu - ia

V.º Tacet. Al segno 

Responssorio 2.º

And.º con moto || 

Si - ne ta - tu pu - doris

in ven ta er Ma ter Sal va

to ris in ven ta er Ma ter Ma ter Sal va

to - - - - ris

Alegreto

tu - o se clausit vis ce

ra fa - - - - ctus ho - mo

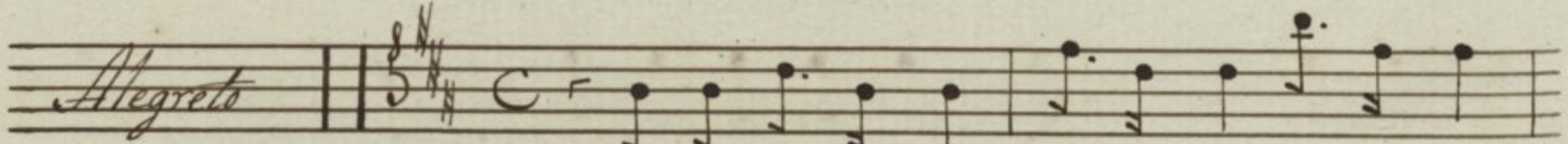
le lu ia Al - - - - le lu

ia Al le lu ia Al le lu ia

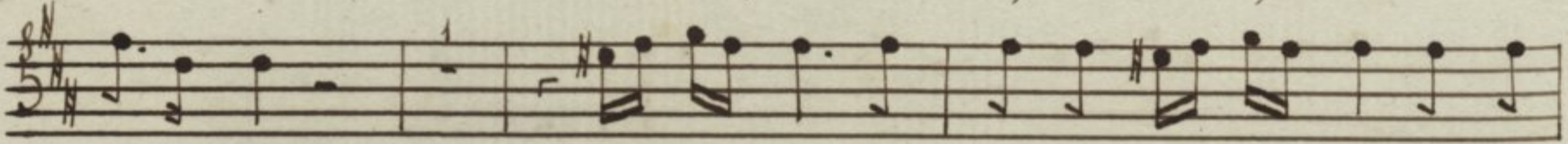
V. Tacet. Al Segno

IRMANDADE DOS
CERIEGOS

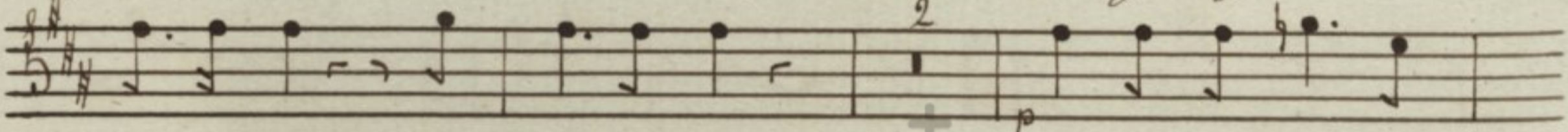
Responserio 3º

Allegretto 

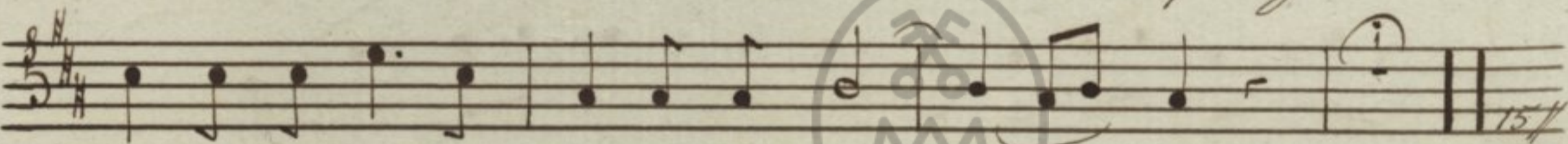
Mul-ta fi-li-a fi-li-a fi-li-a



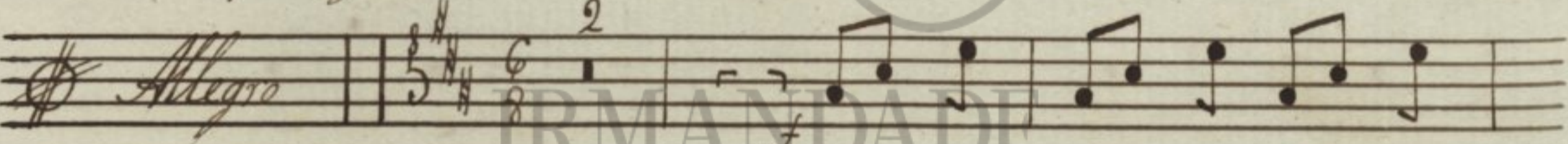
fi-li-a mul-ta fi-li-a con-gre-ga-ve-runt di-



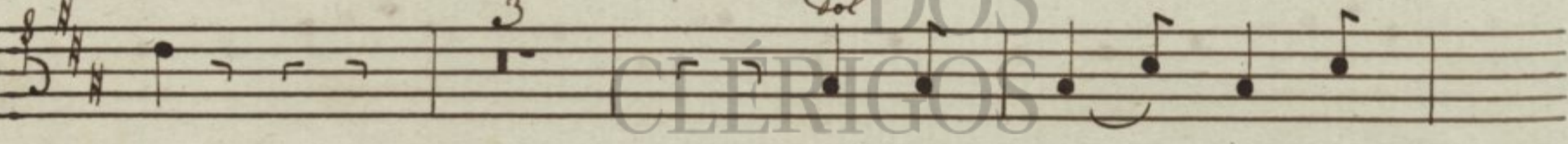
vi-ti-as di-vi-ti-as tu su-per-gressa



es su-per-gressa es u-ni-ver-sa-

Allegro 

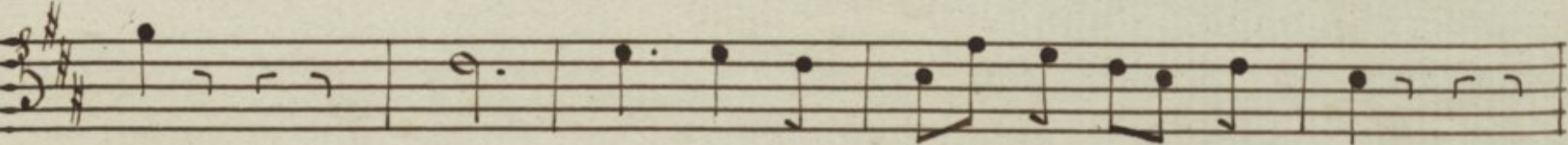
Spe-ci-o-sa-fac-ta



es et su-a-vis su-



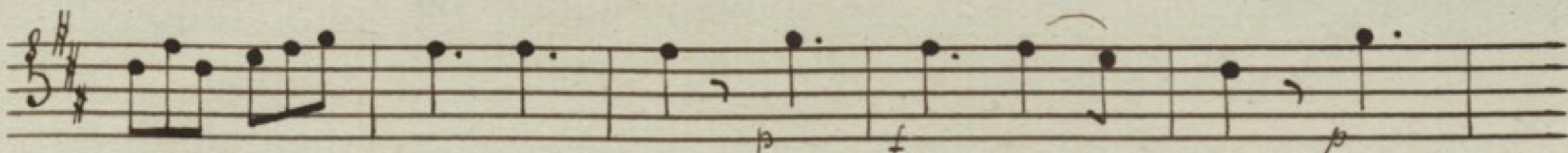
a-vis in-de-li-ci-is-tu-is San-



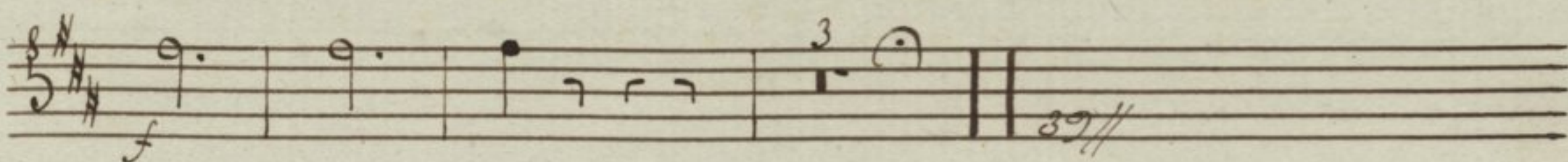
cta San-cta San-cta De-i-ge-ni-tris



Al - - - - -



le lu a Al le lu - ia Al



le lu ia

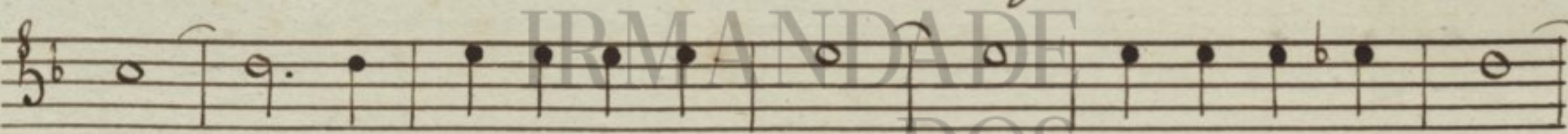
V. Tacet, Al Segno Gloria Tacet, Al Segno

2.º Noturno, Responsorio 4.º

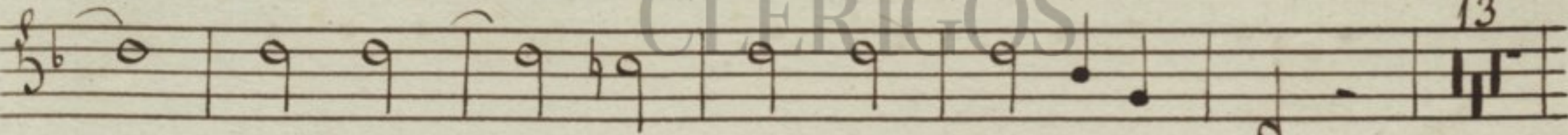


All.º

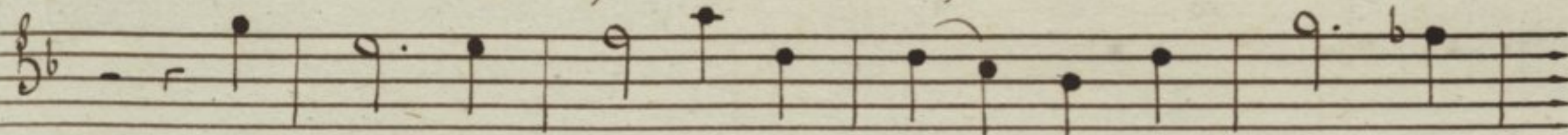
Cu jus Do mi nus



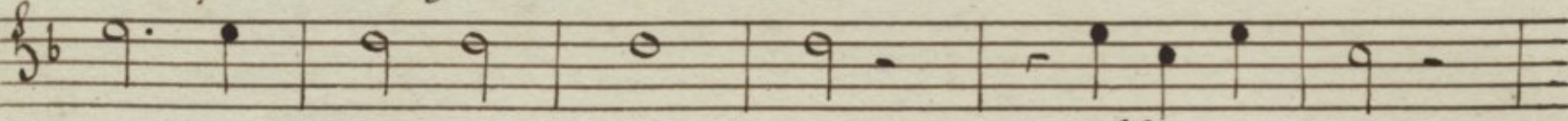
Do - mi nus hu mi li - ta - tem hu mi li - ta



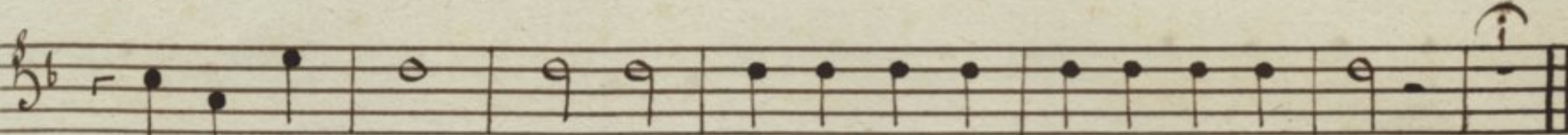
- tem res - - pe xit res pe - - xit



que An ge lo nun ti an - te con ce pit



Sal va to rem mun di Alle lu ia

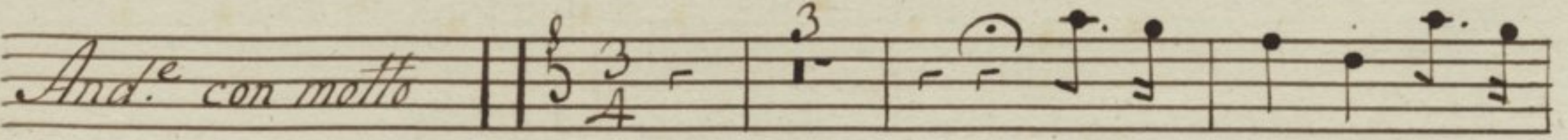


Al - - le lu ia Alle lu ia Alle lu ia.

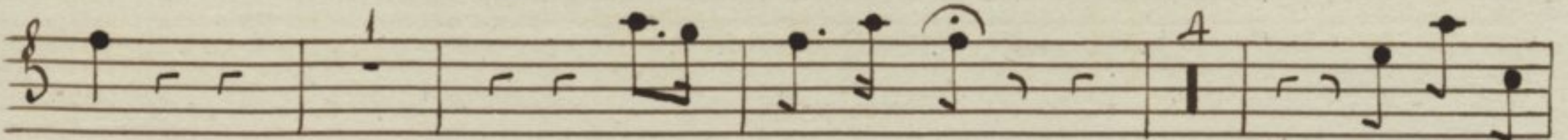
V.º Tacet, Al Segno



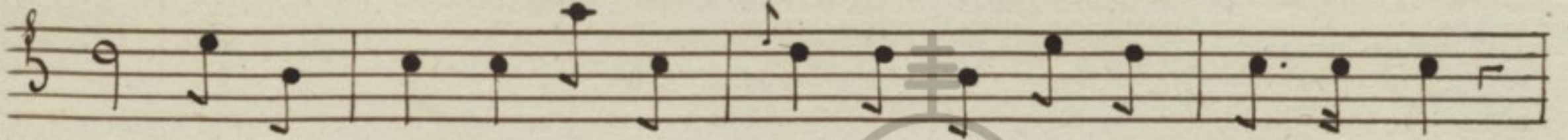
Responso 5.

And.^e con motto 

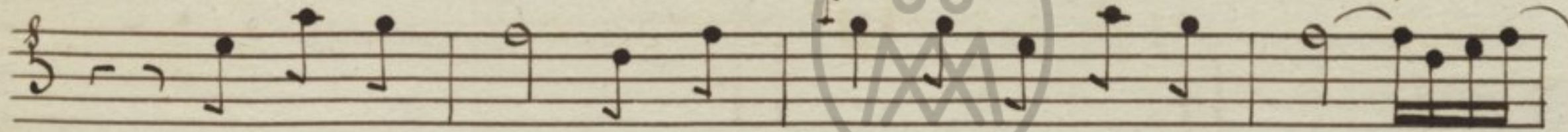
Be ne di cta Fi lia



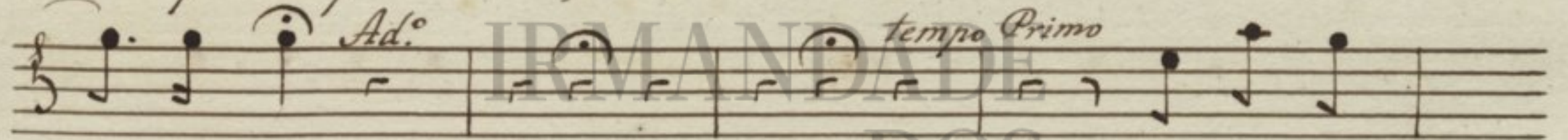
tu a Do mi no qui a per



te fru ctum vi ta fru ctum vi ta com mu ni ca vi mus

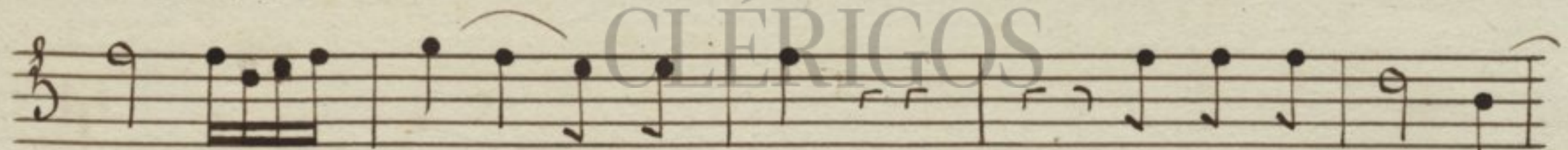


qui a per te fru ctum vi ta com mu ni ca - - -

Ad.^o  *tempo Primo*

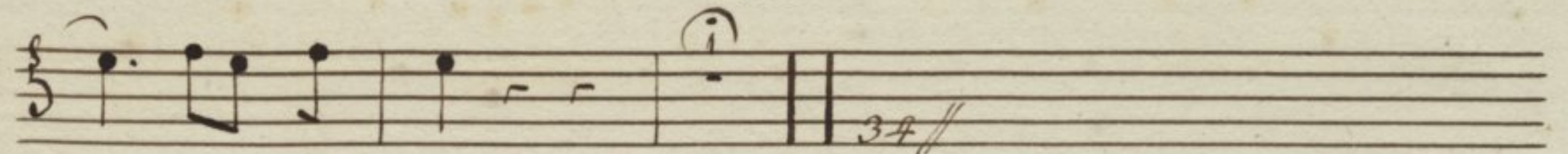
- - vi mus

com mu ni

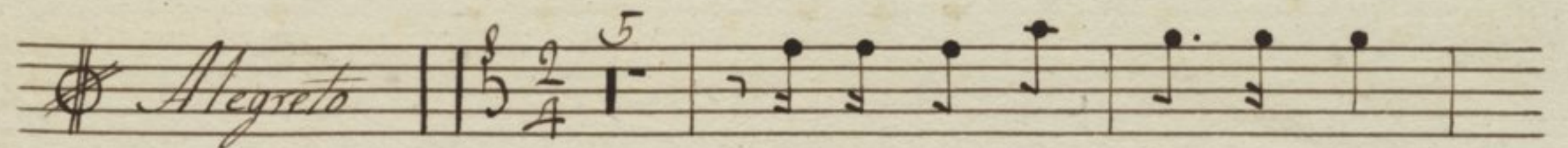


ca - - - - - vi mus

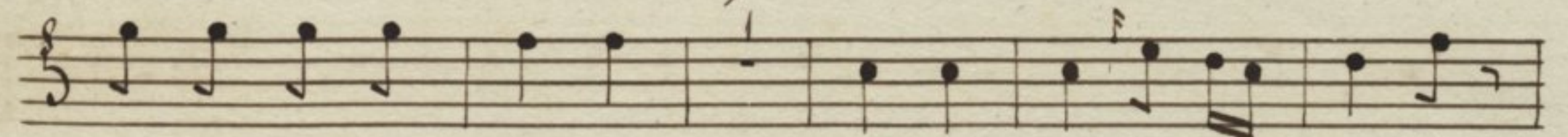
com mu ni ca -



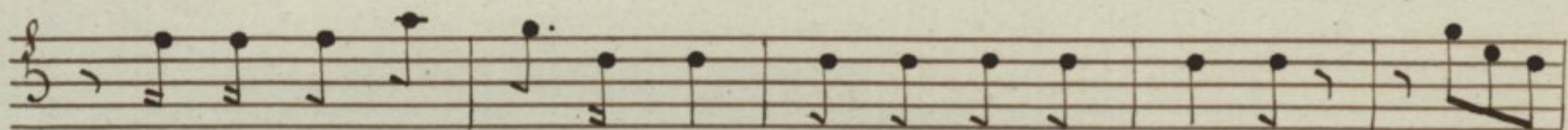
- - - vi mus.

Alegreto 

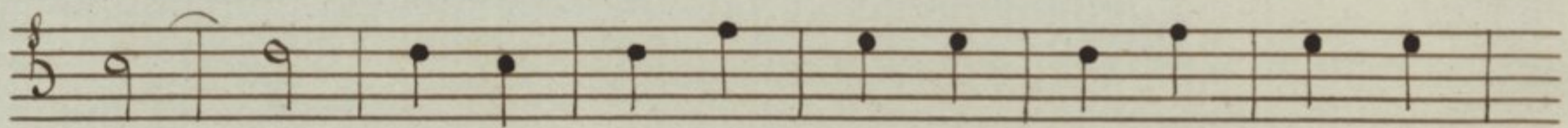
placu is ti Do mi no



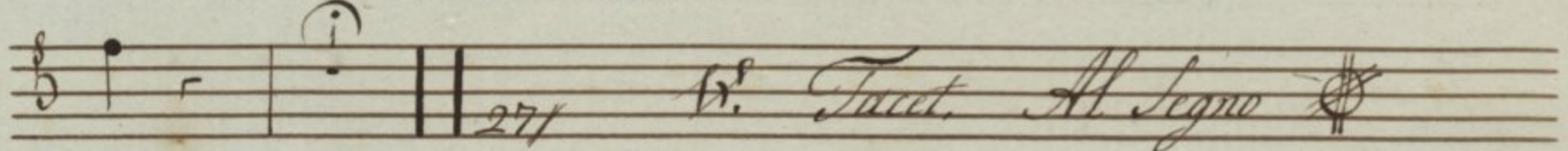
nos tro Je su Chris to So la si ne ex em plo



pla cu is ti Do mi no nos tro Je su. Christo Al -

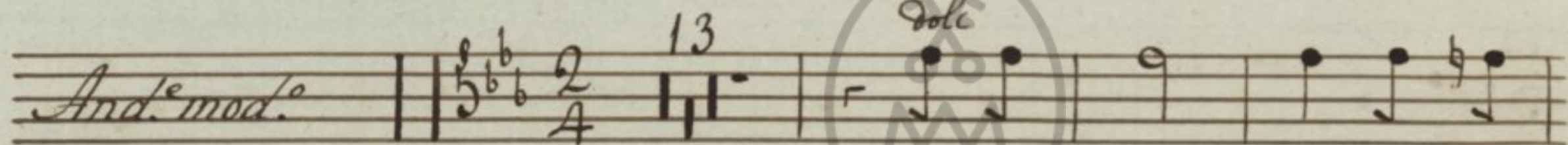


- - - - le lu ia Al le lu ia Al le lu

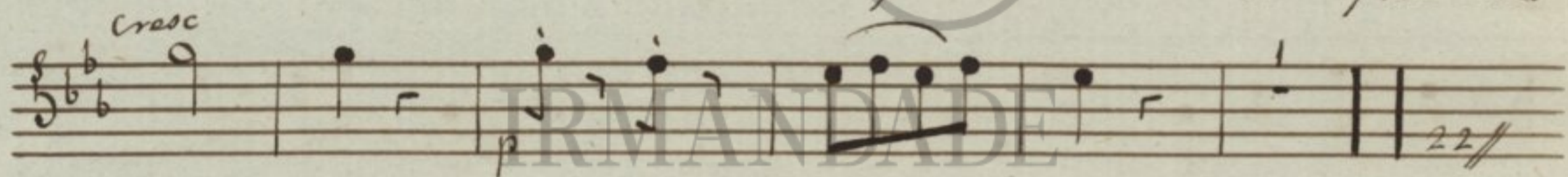


ia

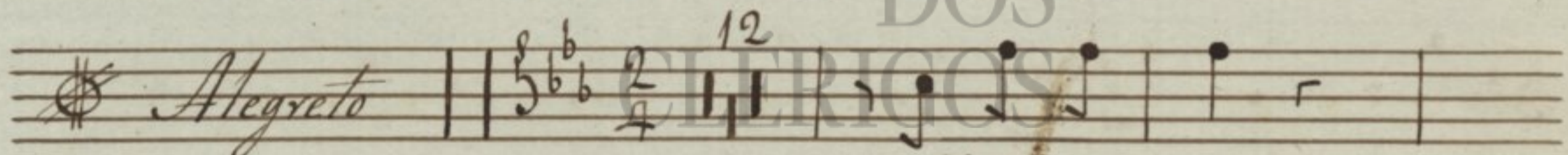
Responsorio 6.º



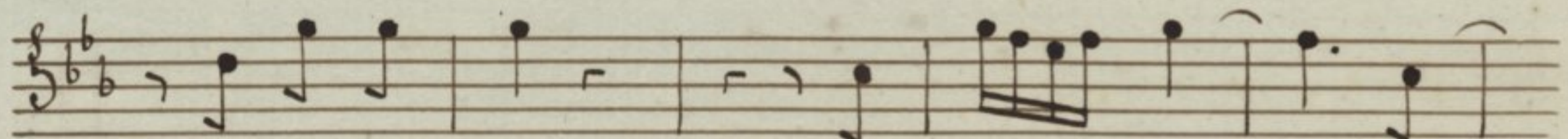
fructus ven tris fructus



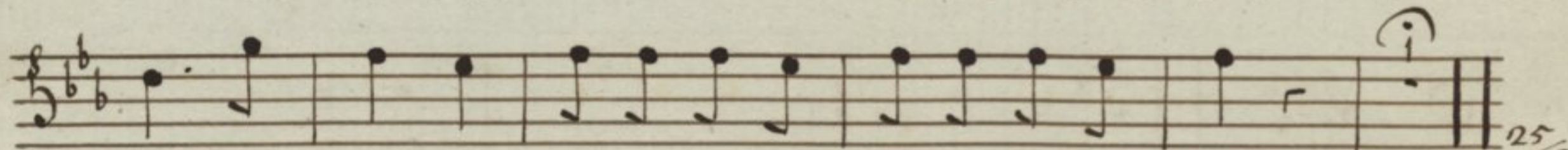
ven tris ven tris tu



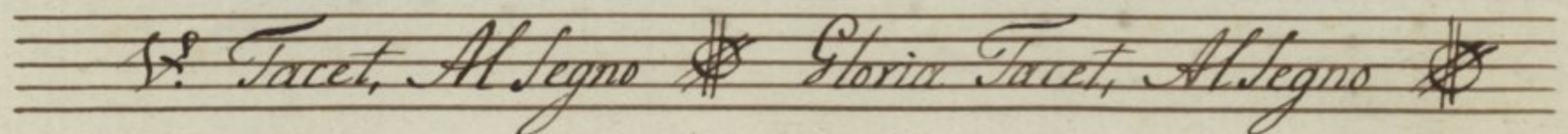
Al le lu ia



Al le lu ia Al - - - -



- - - - le lu ia Al le lu ia Al le lu ia



V. Tacet, Al Segno Gloria Tacet, Al Segno

3.º Noturno

ResponsoRIO 7.º

And.º con moto | 5/4 | 1 | *f* |

Be a ta es

vir go es vir - go Ma ri a De - i ge ni

trix be a ta es be a ta es qua

13 | cre di dis ti Do mi no per fe cta sunt in

te qua di cta sunt ti bi qua di cta sunt qua

di cta sunt qua di - cta sunt ti - - bi

All.º | 5/4 | 4 | pro pte re a pro

pte re a be ne di xit te De us in a ter -



IRMANDADE
DOS
CLÉRIGOS