

BASSO

Matinas da Maternidade de N. Sra.^a

a 4 vozes e Org.

Dedicadas

AO Ill.^{mo} e R.^{mo} Sr. Antonio Moreira

Conigo da S.^{ta} Sé Primaz de Braga

por

IRMANDADE
Antonio da Silva Leite

Mestre da Capella da S.^{ta} Sé
DOS
CLÉRIGOS
do
Porto

1811

Basso

Invitatorio

Adagio | 2/4 | 3 | 1 |

Mater ni ta tem be

4 |

a te Ma ri a vir gi nis ce le bre

7 |

mus ce le bre mus Christum e jus

1 |

e jus Fi li um a do re mus Do

4o//

- mi num Al - - le lu - - - - -

Allegretto | 3/4 | 1 |

Mater ni ta tem be

a te Ma ri a vir gi nis ce le bre - -

1 |

mus Christum e jus Fi li um a do re mus

Do mi num a do re mus Do mi num Al - - - - -

le lu ia

Hymno principia o Coro

Ho vir go no bis e di

dit nos tra sa lu tis Aus pi cem qui nos re

de mit san qui ne pa nas cru cem que per tu

lit.

Vo ces Pa ren tis ex ci

pit vo tis que Na tus an nu it hanc quis que

semper di li gat re bus quem ar ctis in vo

cet.

1.º Noturno Responsorio 1.º

And. mod. Musical notation for the first staff, starting with a treble clef, a key signature of one sharp (F#), and a common time signature (C). The tempo marking is *And. mod.*

Felix es Sa cra

Musical notation for the second staff, continuing the melody.

vir - go Ma ri a et om ni lau de di

Musical notation for the third staff.

gni ssi ma di gni ssi ma di gnis - - si ma

Musical notation for the fourth staff, including a double bar line and a repeat sign.

felix es per quem Sal va ti

Musical notation for the fifth staff.

et re dempti su mus Al le lu

Musical notation for the sixth staff, ending with a double bar line and a fermata.

ia Al le lu ia Al le lui a

Musical notation for the seventh staff, starting with a treble clef and a key signature of one sharp (F#). The tempo marking is *Ad.º*.

Mater ni ta - - tem be

Musical notation for the eighth staff.

a te Ma ri a vir gi nis cum gau - di o cum

Musical notation for the ninth staff.

gau - di o ce le bre mus ce le bre - mus Na ti - vi

ta tem be a te Ma ri a Ma ri a vir gi nis cum

gau di o cum gau di o ce le bre mus ce le

bre - - - - -

mus cum - gau di o ce - le bre mus ce - le

bre - - - - - mus ce le bre - mus cum gau di o cum

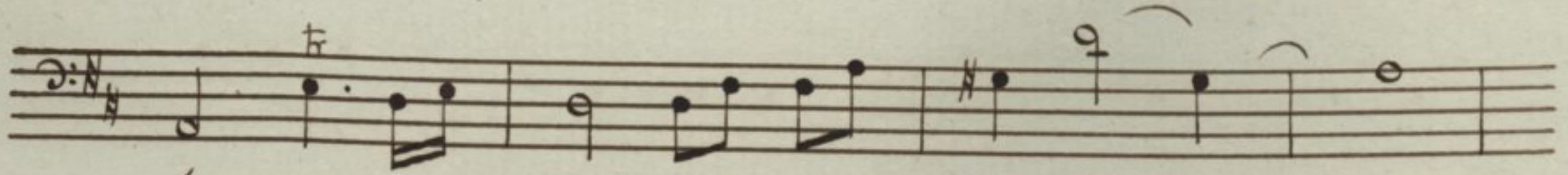
gau di o ce le bre - - - - - mus ce le bre - mus mater ni

ta - tem be - a te Ma ri a vir gi nis cum gau di o ce le

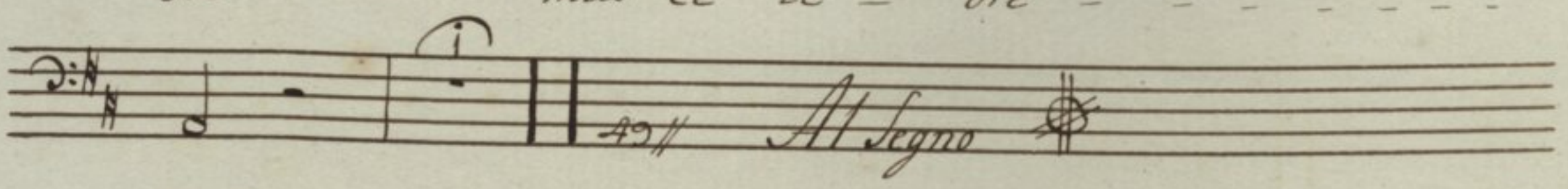
bre mus ce le bre - - - - -

- - - - - mus cum gau di o ce le bre mus ce le

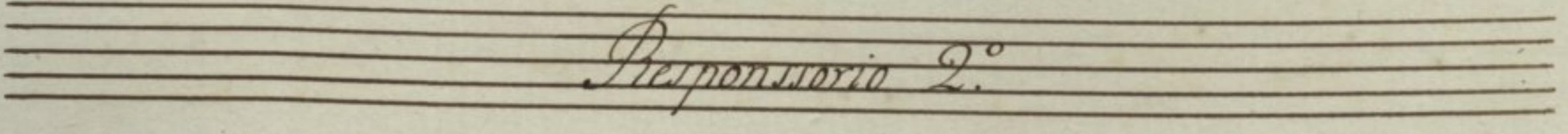
bre - - - - - mus ce le



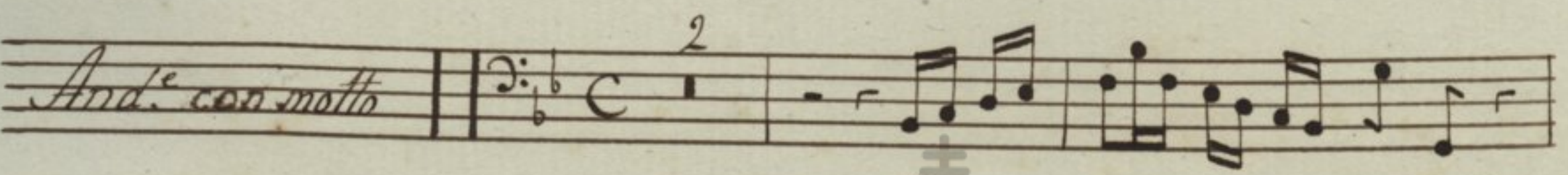
bre - - - mus ce le - bre - - -



mus.

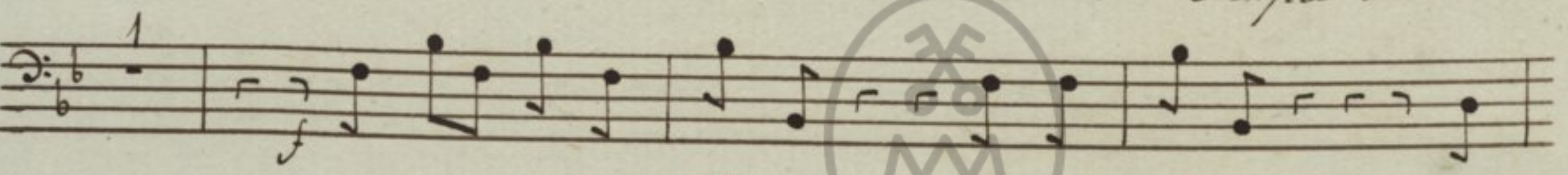


Responsorio 2.

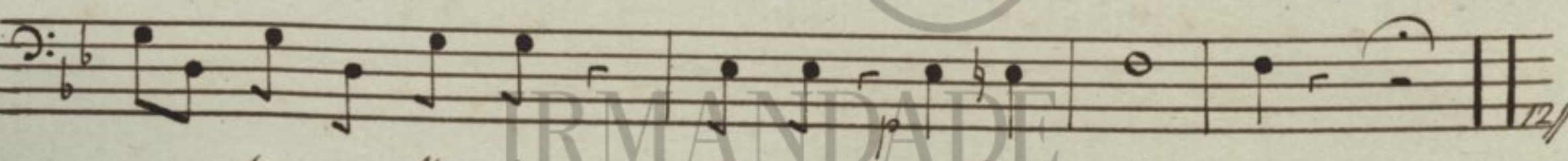


And. con moto

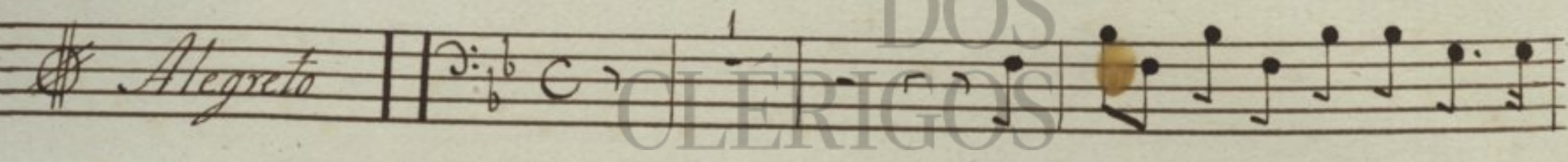
Si ne ta - ctu pu do ris



in ven ta es Ma ter Sal va to ris in

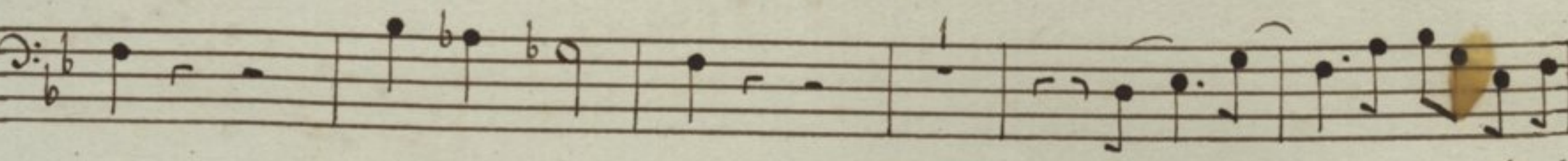


ven ta es Ma ter Ma ter Sal va to ris

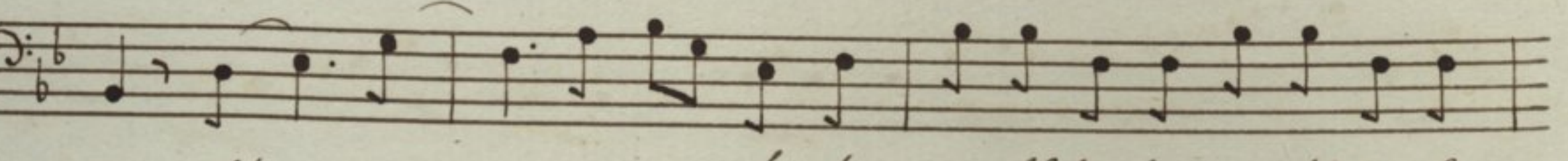


Allegretto

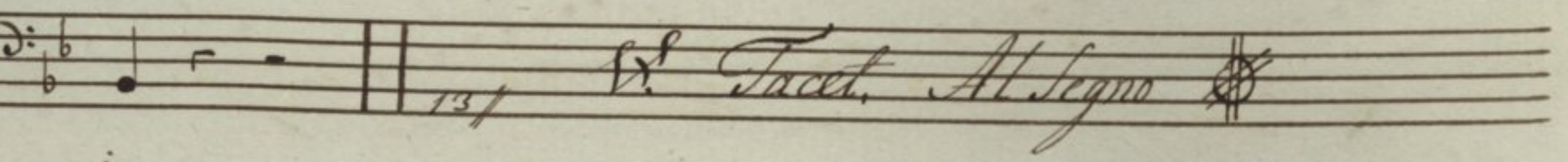
in tu o se clausit vis ce



ra factus ho mo Al - - - - le lu



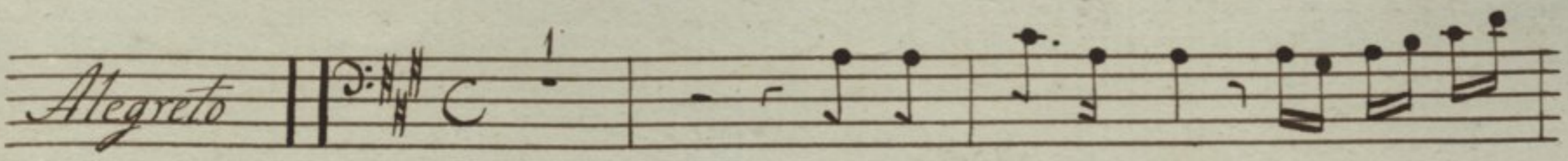
ia Al - - - - le lu ia Al le lu ia Al le lu



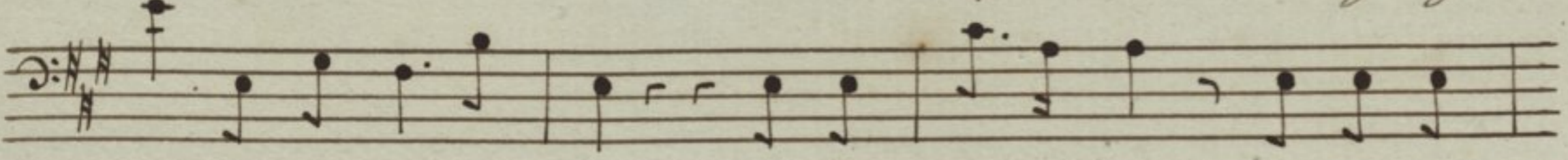
V. Tacet. Al Segno

ia

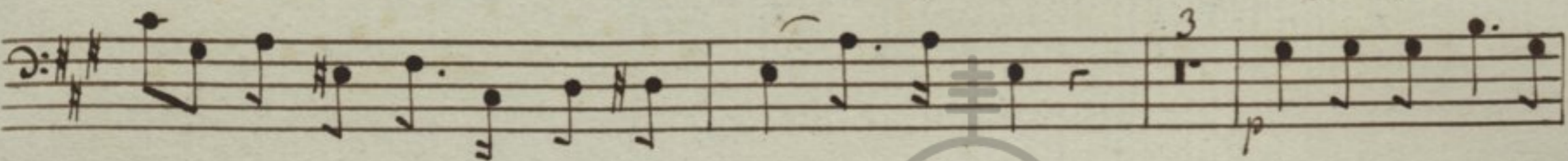
Responsorio 3.º

Alegreto | | 

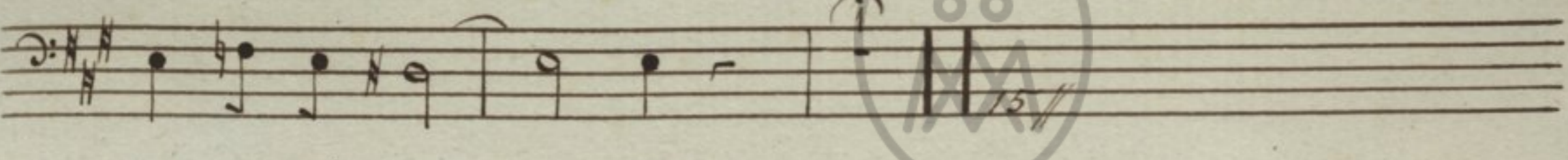
Mul-ta fi-li-a con-gre-ga



ve-runt di-vi-ti-as mul-ta fi-li-a con-gre-ga



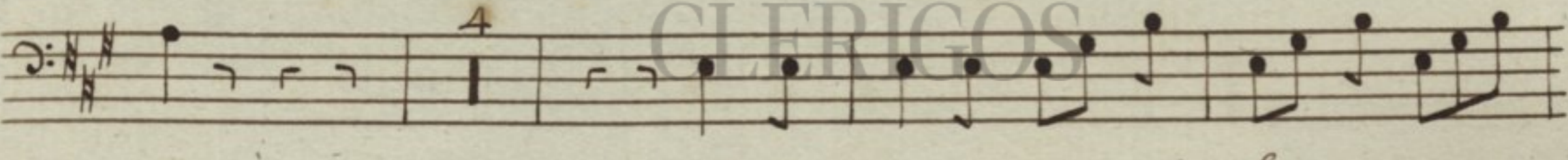
ve-runt di-vi-ti-as di-vi-ti-as tu su-per-gressa



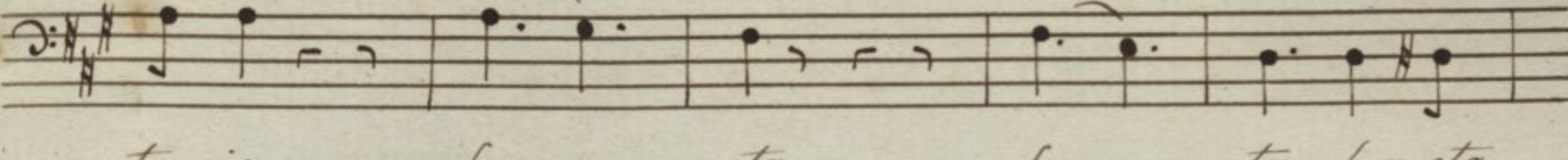
es u-ni-ver-sas

Allegro | | 

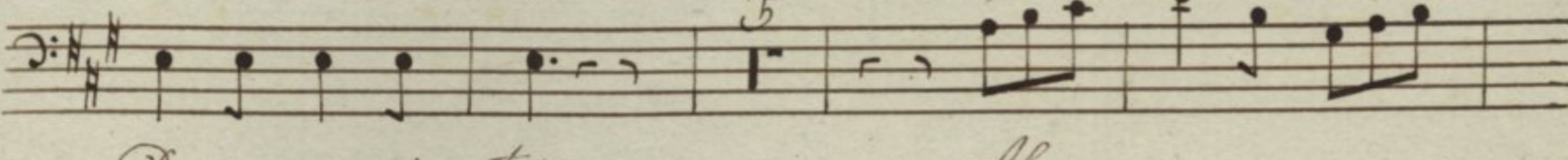
Spe-ci-o sa fa-cta



es et su-a-vis in-de-li-ci-is



tu-is San-cta San-cta San-cta



De-i-ge-ni-tris Al-



le-lu

ia Al le lu ia Al le lu ia

Adagio

Senti ant om nes tu - um ju

va men qui cum que ce le brant tu am

San - ctam Ma ter ni ta tem qui cum que ce le

brant tu am San ctam Ma ter ni ta tem.

Allegro *Segue*

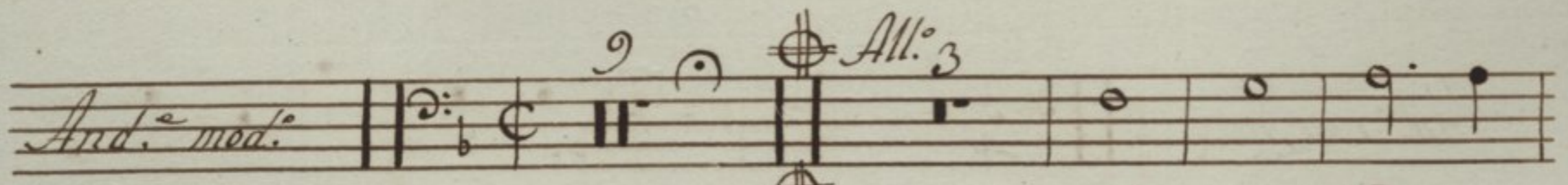
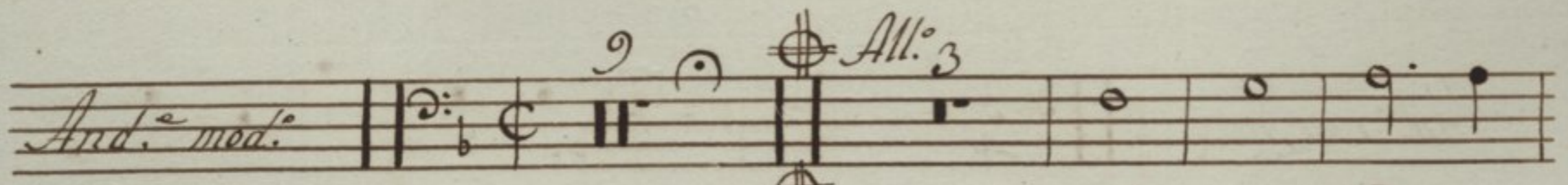
Adagio

Glo ri a Pa tri Pa tri et

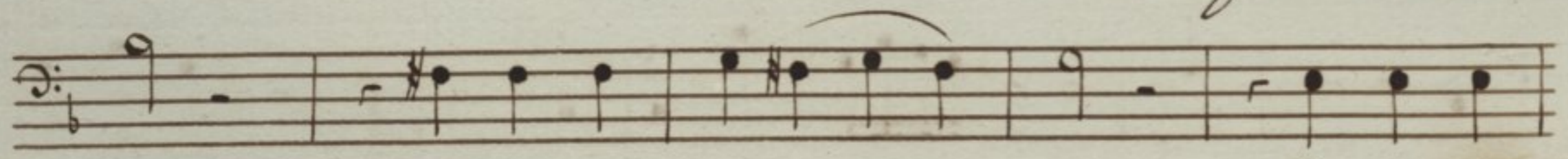
Fi li o et - Spi ri tu i San - -

cto. *Al Segno*

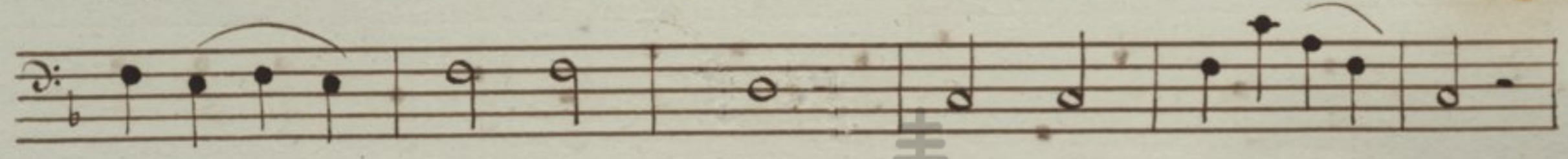
2.º Noturno Responsorio 4.º

And.º med.º  All.º 3 

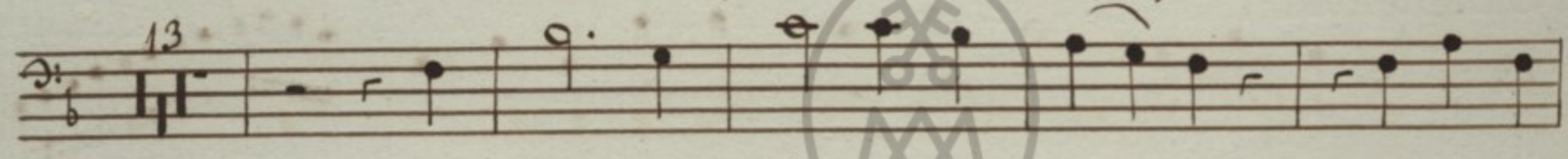
Cu jus Do mi



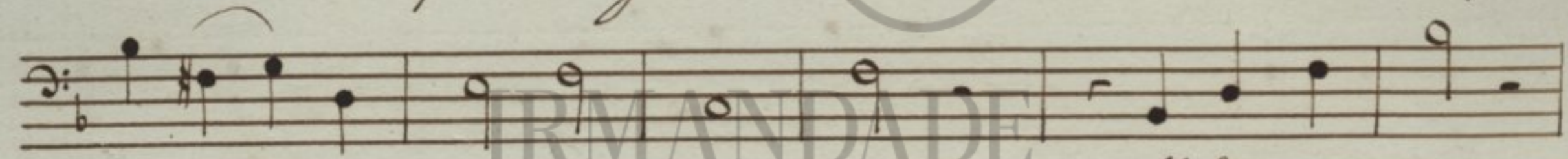
nus hu mi li ta - - - tem hu mi li



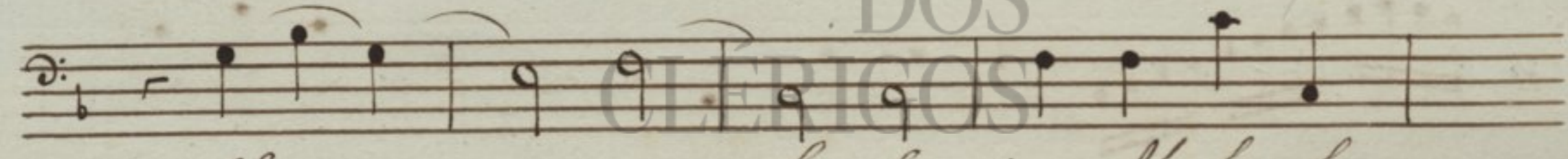
ta - - - tem res pe xit res pe - - - xit

13 

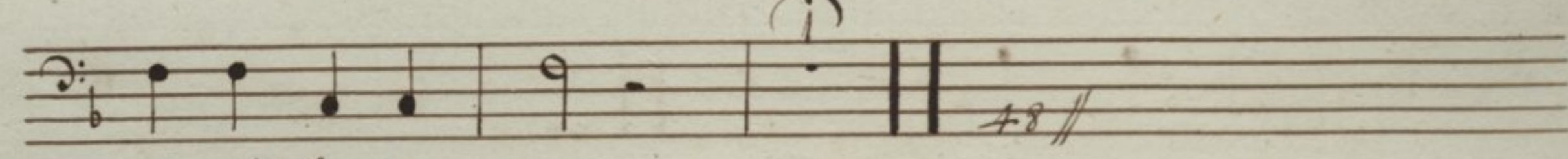
qua An ge lo nun ti an - te con ce pit



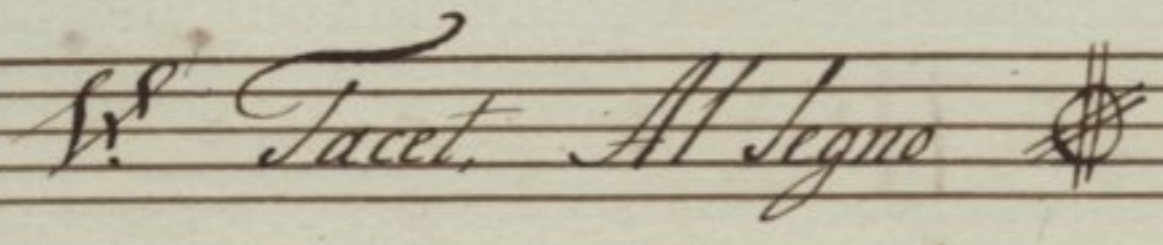
Sal - - va to rem mun di Alle lu ia

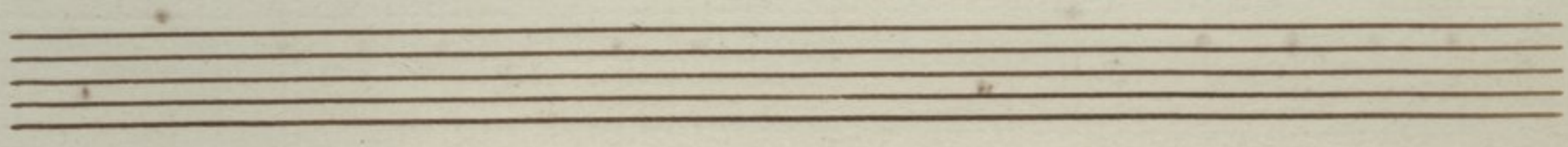


Al - - - le lu ia Alle lu

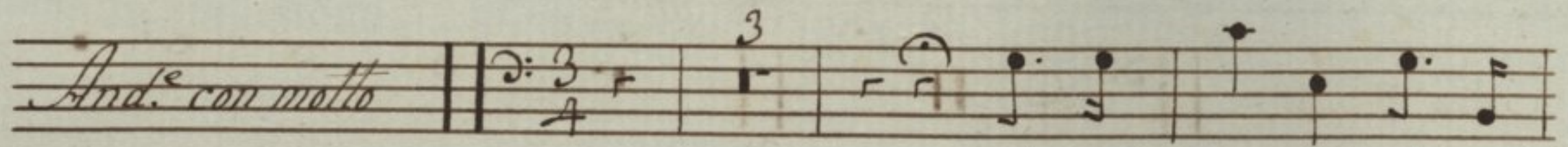
 48 //

ia Alle lu ia.


V.º Tacet. All.º Segno 



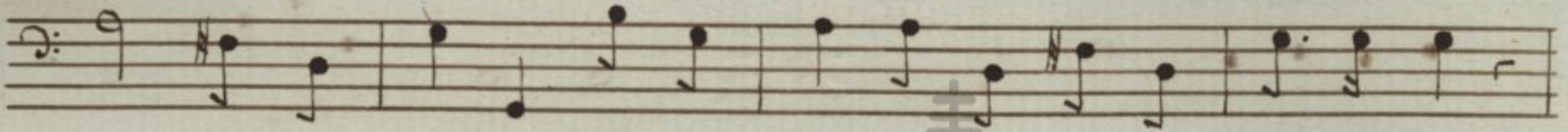
Responsorio 5.

And. con molto 

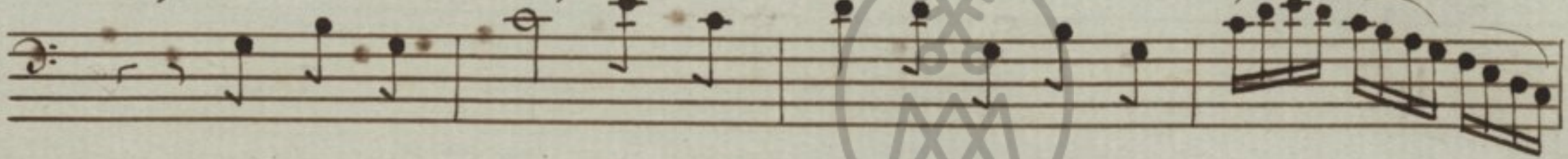
Be ne di cta Fi lia



tu a - - Do mi no qui a per



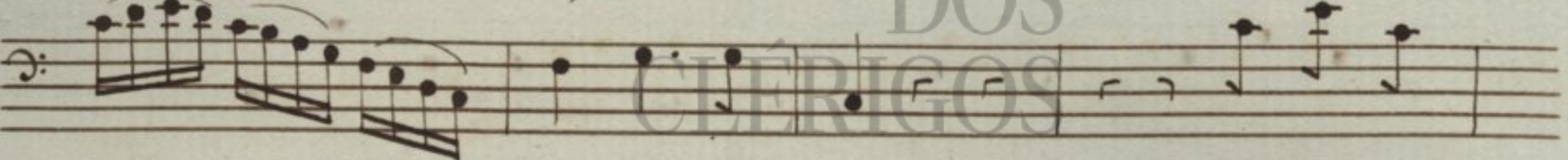
te fru ctum vi ta fru ctum vi ta com mu ni ca vi mus



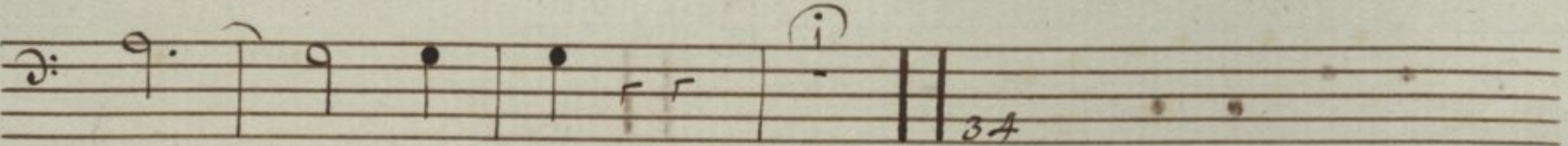
qui a per te fru ctum vi ta com mu ni ca

Ad. tempo Primo 

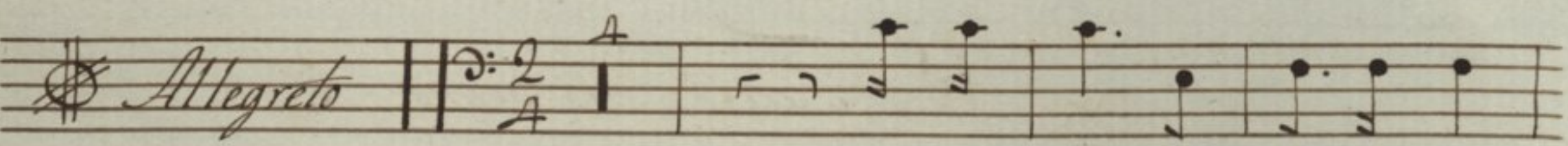
- - vi mus fru ctum vi ta com mu ni



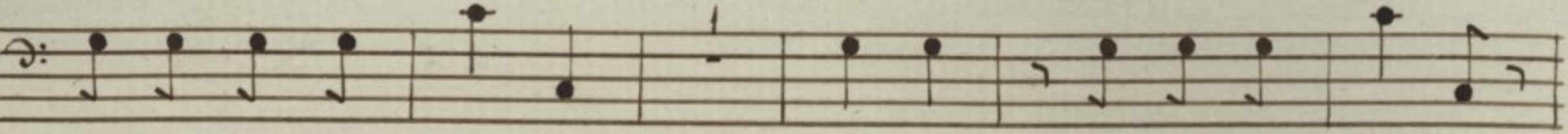
ca - - - - - vi mus com mu ni



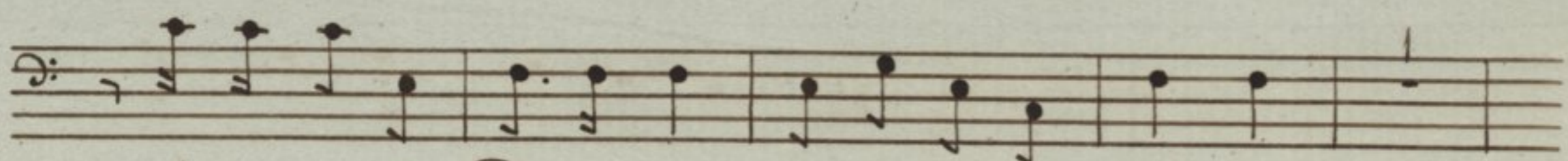
ca - - - - - vi mus.

Allegretto 

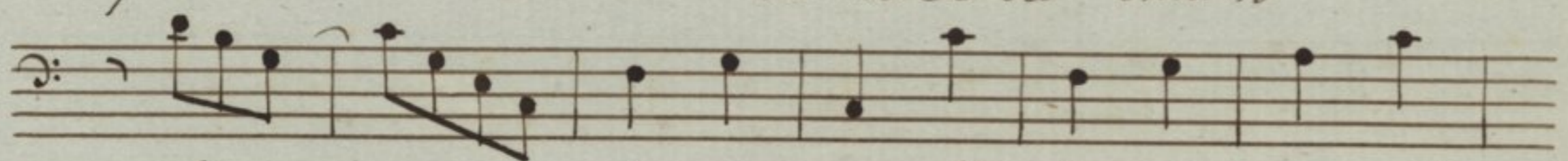
pla cu is ti Do mi no



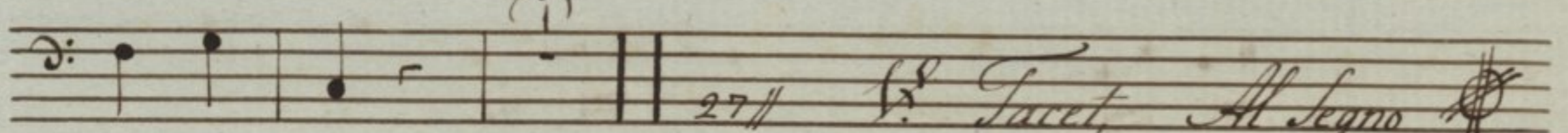
nos tro Je su Chris to So la si ne ex em plo



placuis ti Do mi no nos tro Je su chris to



Al - - - le lu ia Al le lu ia Al



le lu ia.

27 //

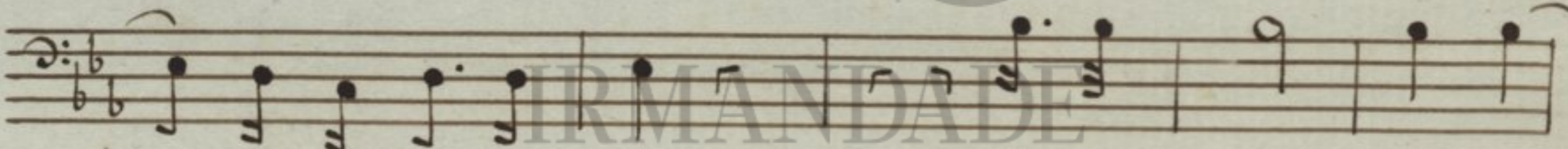
V. Tacet, Al Segno

Responchorio 6.º

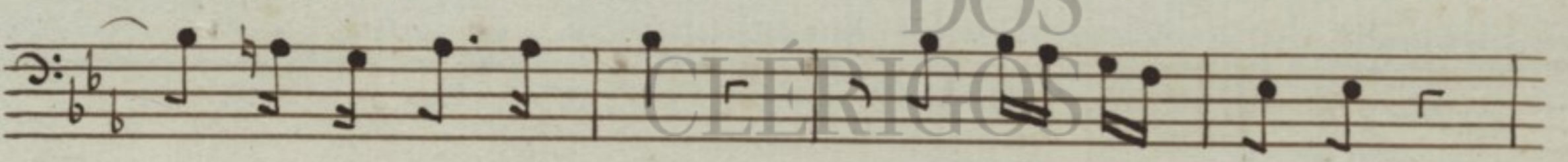


And. mod.

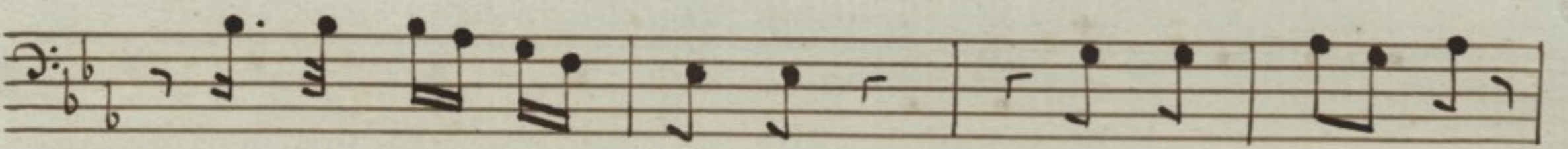
Be ne di cta in



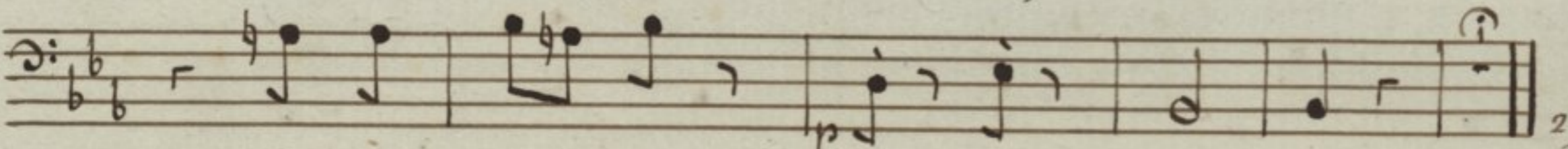
- - - - - ter mu li e res Be ne di cta in



- - - - - ter mu li e res et be ne dictus



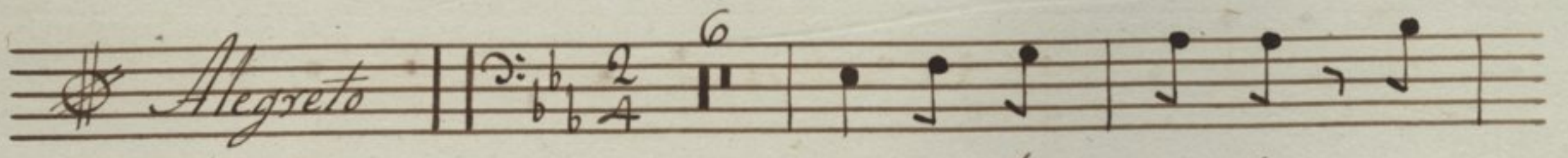
be ne di ctus fructus fru ctus ven tris



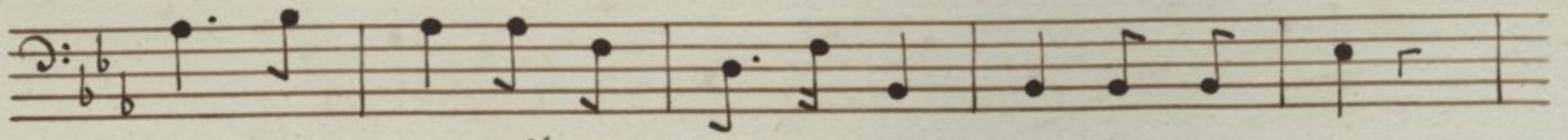
fru ctus ven tris ven tris tu i

22 //

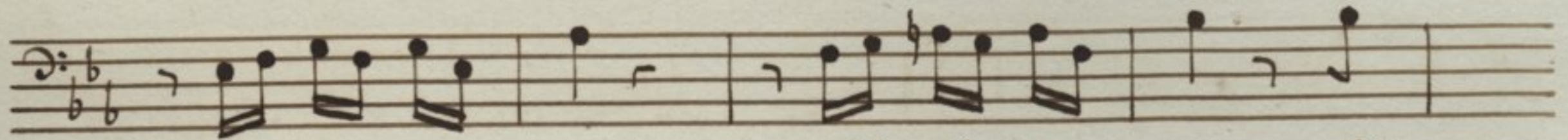
Volte Subito

Allegretto 

Un de hoc mi hi ut



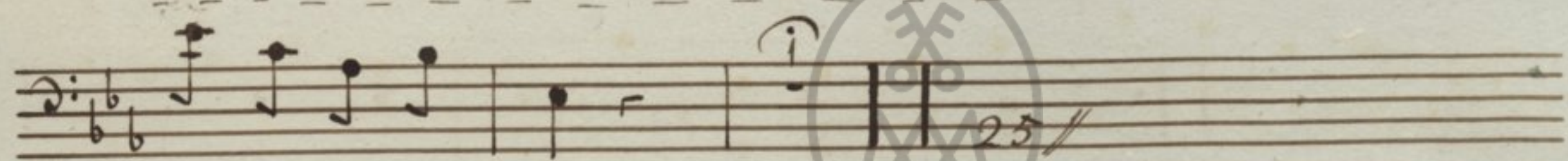
ve ni at Mater Do mi ni me i ad me



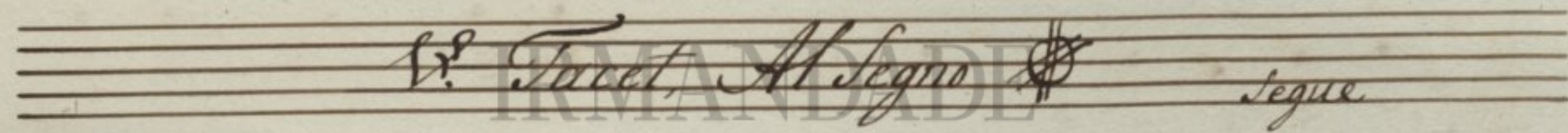
Al le - lu - ia Al - le - lu - ia Al



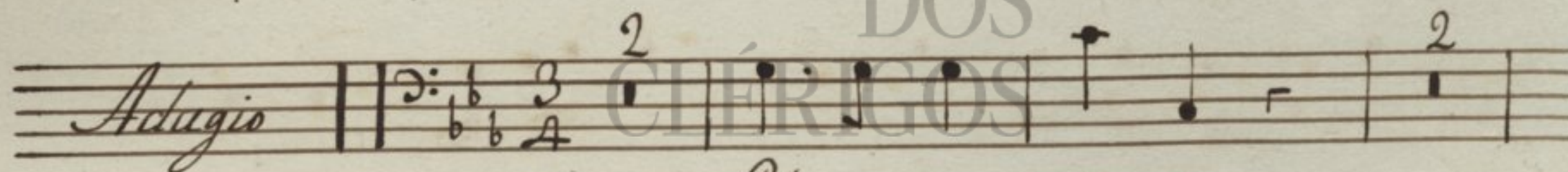
le lu ia Al le lu



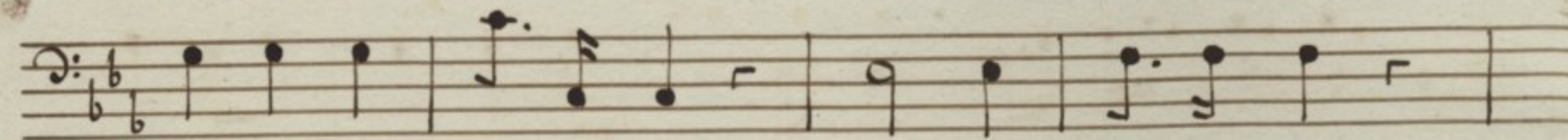
ia Al le lu ia

V. Tacet, Al Segno 

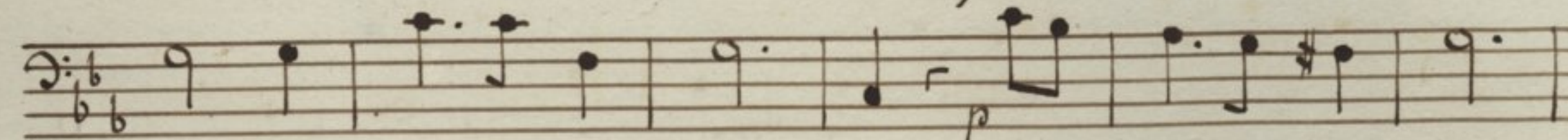
Segue

Adagio 

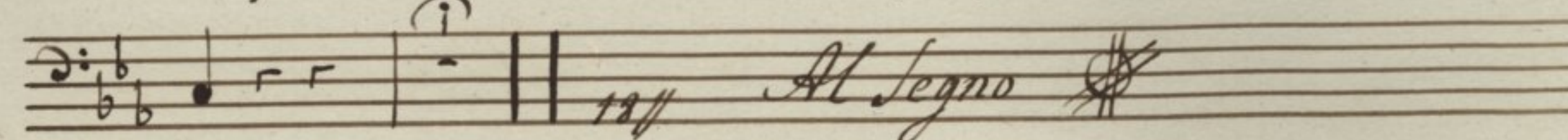
Glo ri a Pa tri



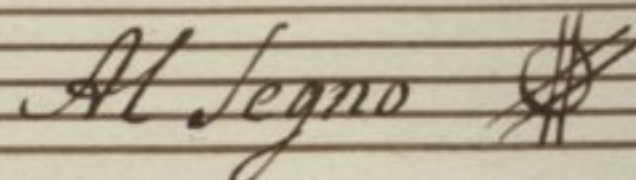
Pa tri et Fi li o et Spi ri tu i



et Spi ri tu i San cto Spi - ri tu i San



cto.

Al Segno 

3.º Noturno

Responssorio 7.º

And.º con motto

3/4

Be a ta es

vir go es vir go Ma ri a De - i ge ni

tris be a ta es be a ta es qua

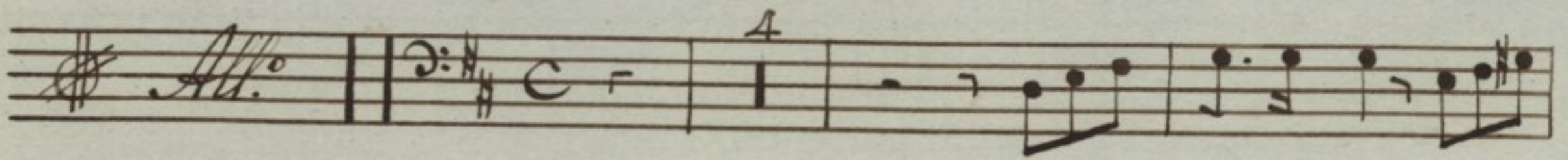
cre di dis ti Do mi no per

fe cta sunt in te quo di cta sunt ti bi qua

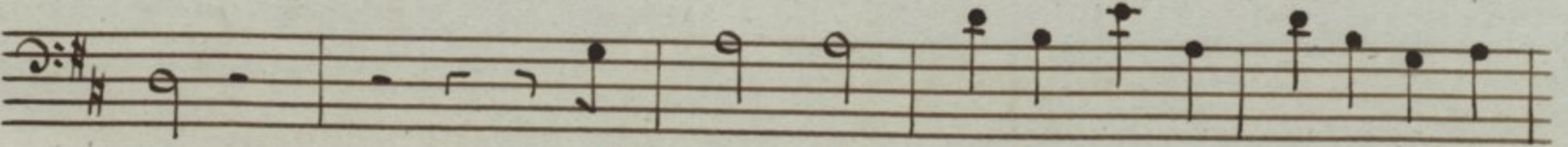
di cta sunt quo di cta sunt quo di - cta sunt

ti - - - bi.

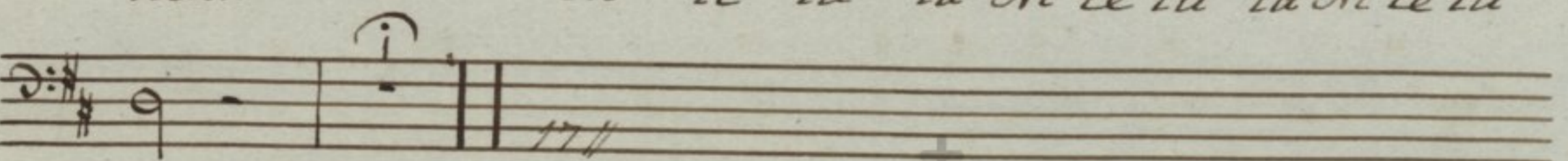
Volti Subito



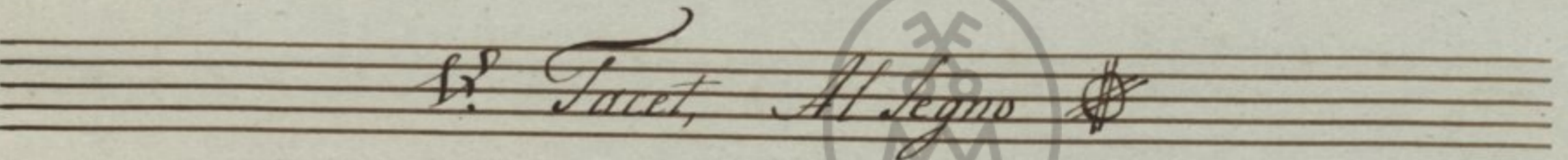
ptere a be ne di xit te De us in a ter



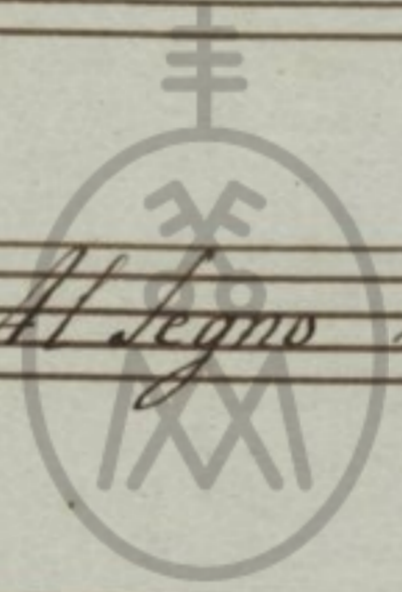
Al le lu ia Al le lu ia Al le lu



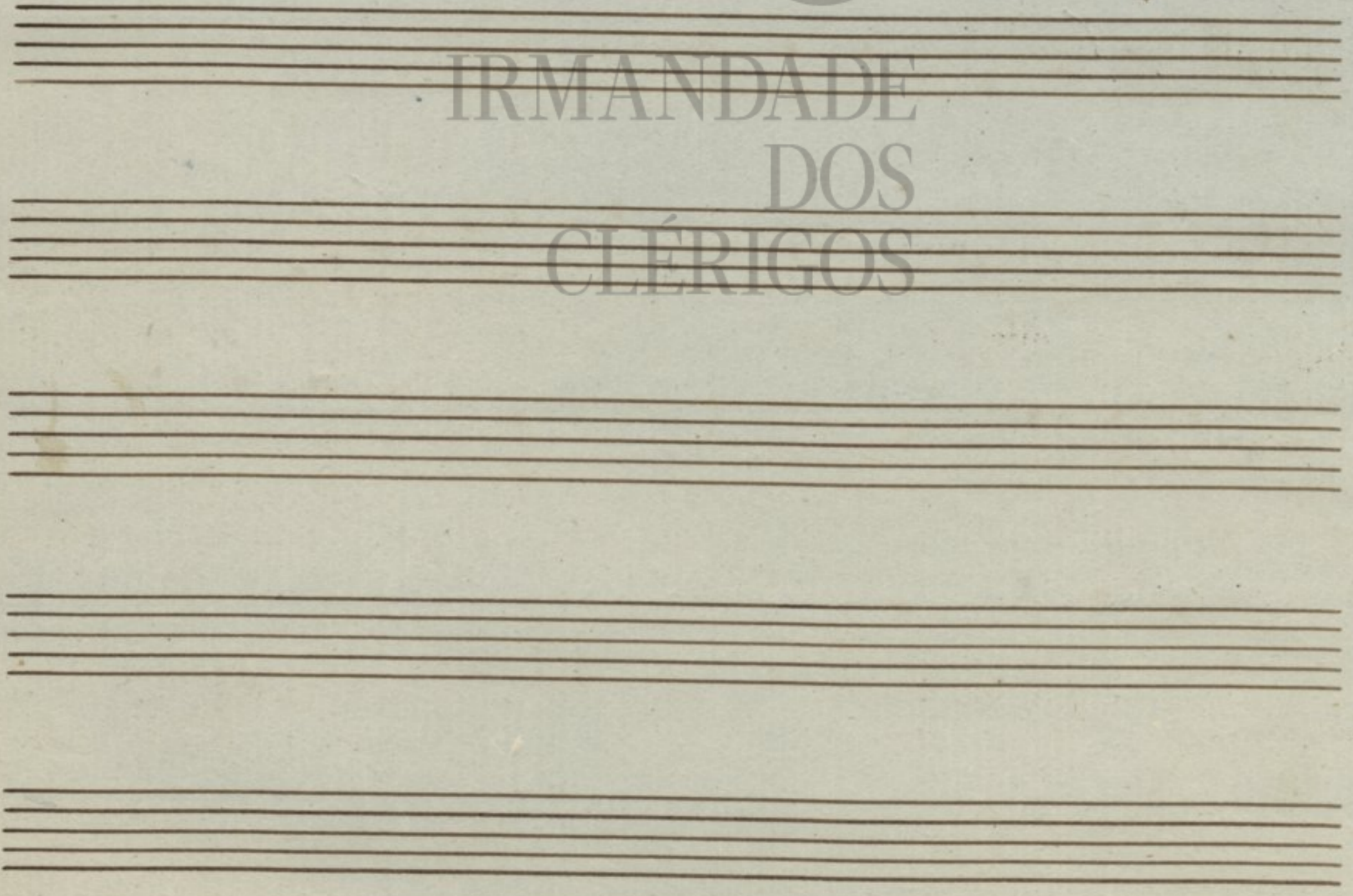
ia.



Tacet, Allegro



IRMANDADE
DOS
CLÉRIGOS



Gloria do 2.º Responso

Adagio non tanto | 3/4 ² | 2 | ²

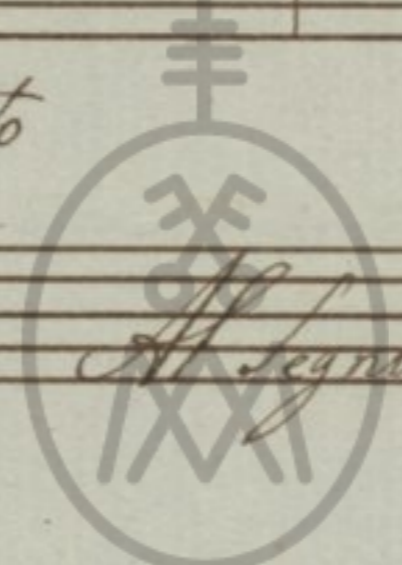
Glo ri a Pa tri

Pa tri et Fi li o et Spi ri tu i

San - - - - - cto Spi - ritu i

San cto Spi - ritu i

San cto



IRMANDADE
DOS
CLÉRIGOS



IRMANDADE
DOS
CLÉRIGOS