

Tenor

Matinas da Maternidade de N. Sra.^a

a 4 vozes e Org.

Dedicadas

AO Ill. me e R. me Sr. Antonio Moreira

Conigo da S. ta Sé Primaz da Braga

por

IRMANDADE
Antonio da Silva Leite

Mestre da Capella da S. ta Sé

do
CLERIGOS
Porto

1811

Tenor

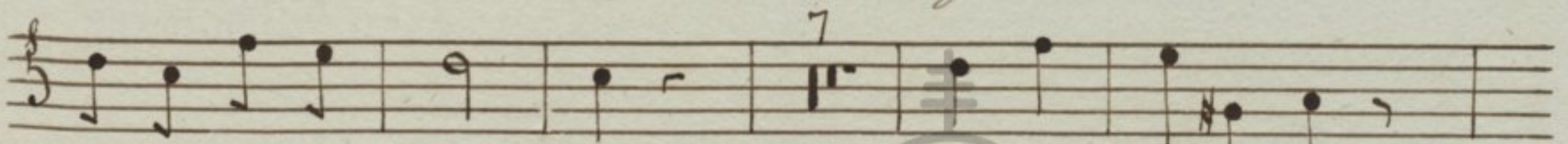
Invitatorio

Adagio 

Mater ni ta - tem

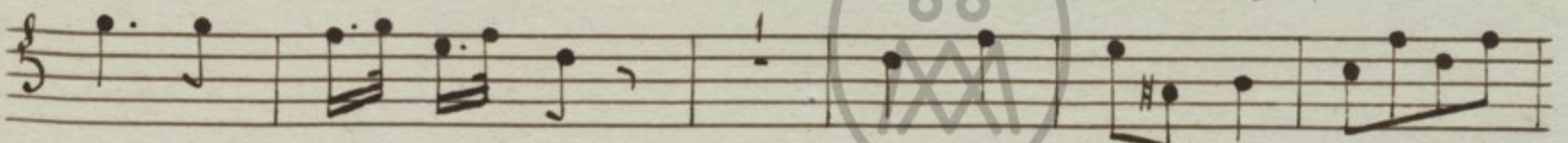


be a ta Ma ri a vir gi nis ce le



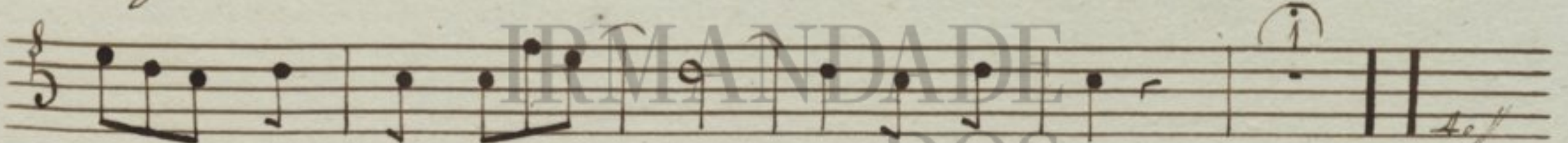
bre mus ce le bre mus

Christum e - jus

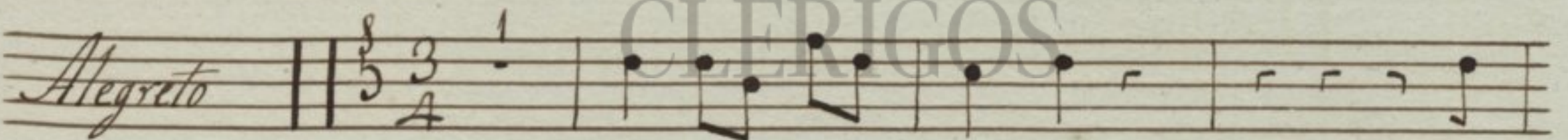


e jus Fi li um

a do re - mus Do - -



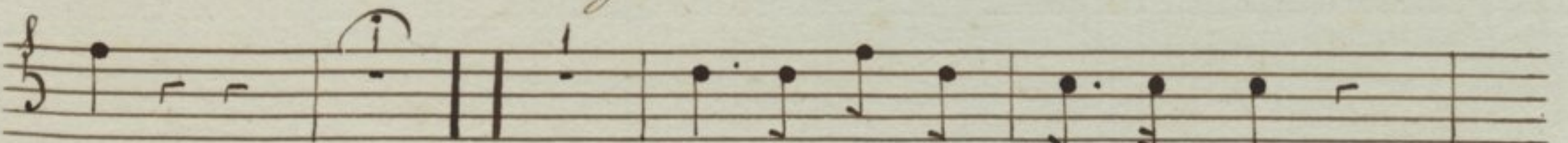
- - - mi num Al - - - - - le lu sia

Alegreto 

Mater ni ta tem be

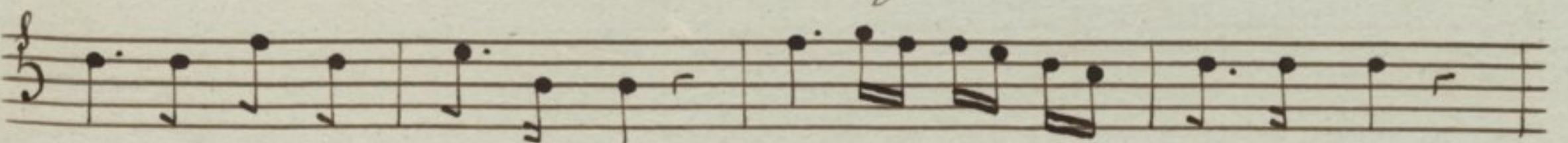


a ta Ma ri a vir gi nis ce le bre mus ce le bre



mus

Christum e jus Fi li um

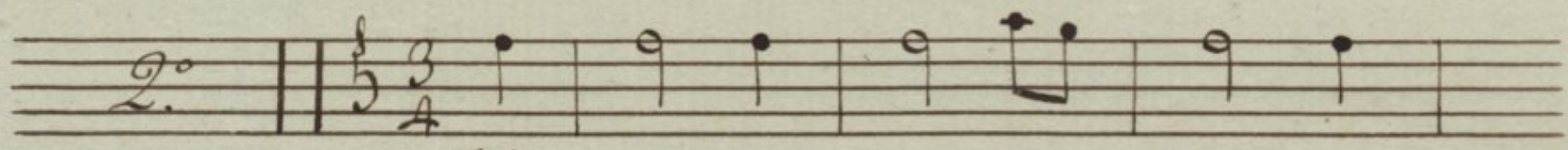


a do re mus Do mi num a do re mus Do mi num

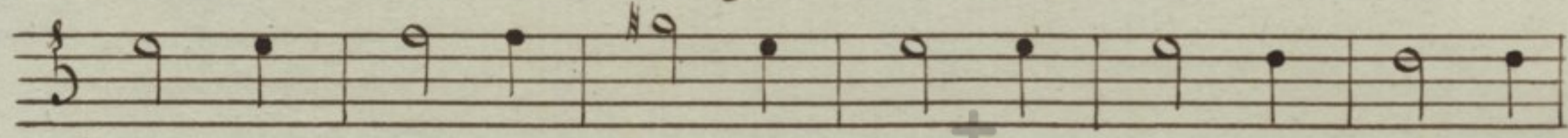


Al le - - lu ia

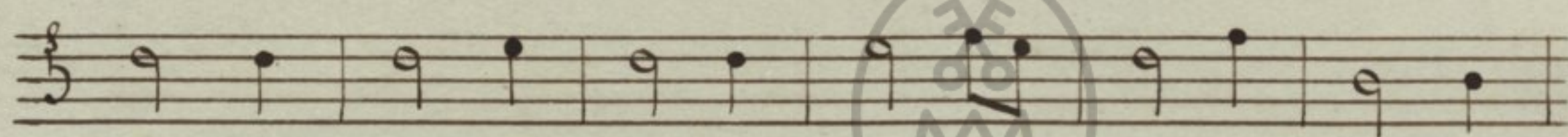
Hymno principia o Coro



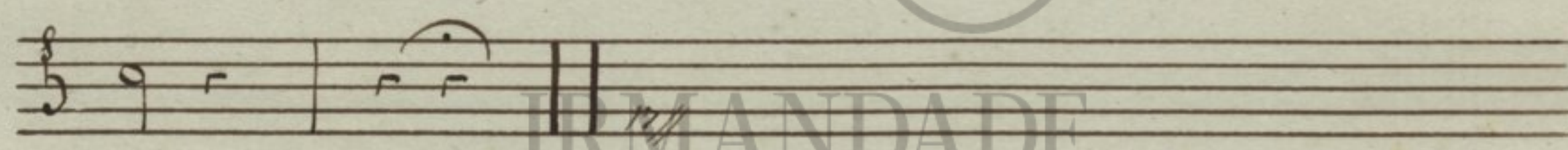
Ha vir go no bis - e di



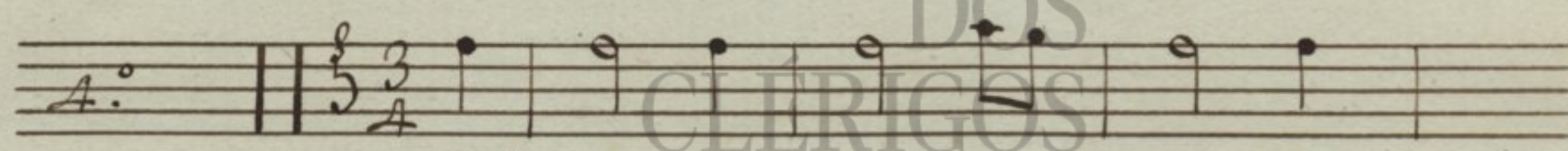
dit nos tra sa lu tis Aus pi cem qui nos re



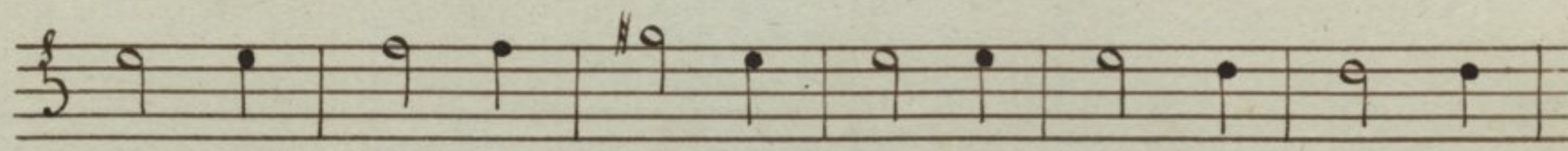
de mit san qui ne pa nas cru cem que per tu



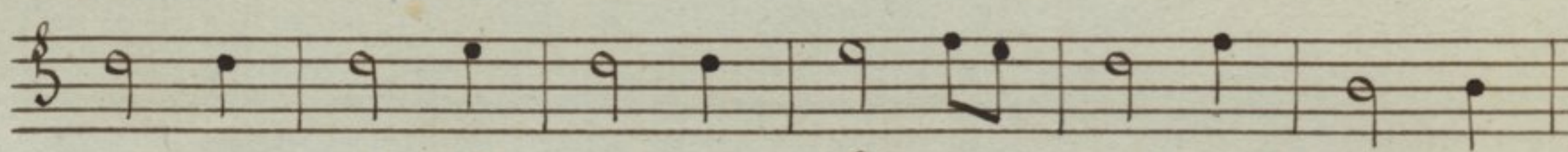
lit.



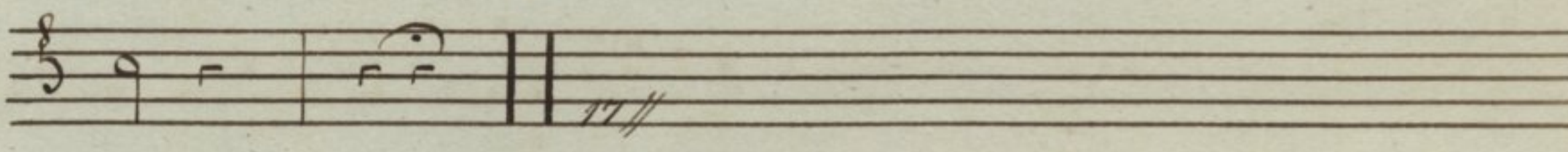
Vo ces Pa ren tis - ex ci



pit vo tis que Na tus an nu it hanc quis que



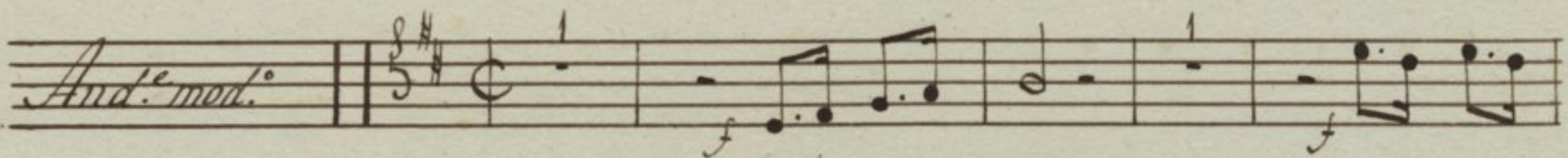
sem per di li gat re bus quem ar ctis in vo



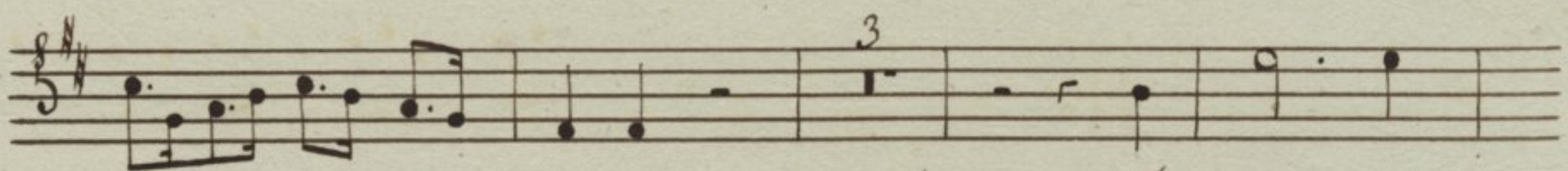
cet.

IRMANDADE DOS CLÉRIGOS

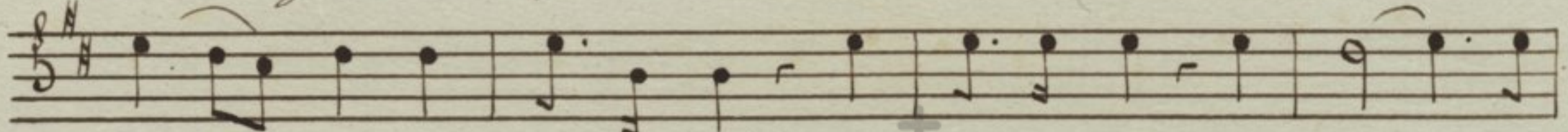
1.º Noturno Responsorio 1.º

And.º mod.º 

f Fe lix es Sa cra



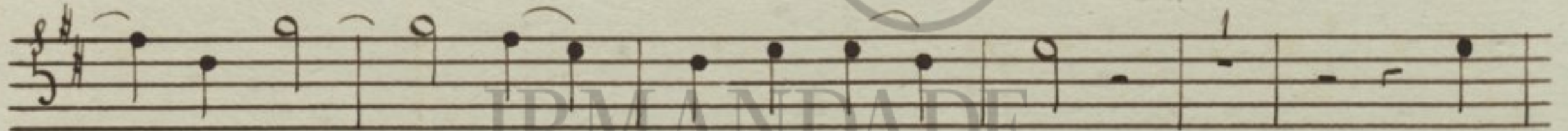
vir - - go Ma ri a et om ni



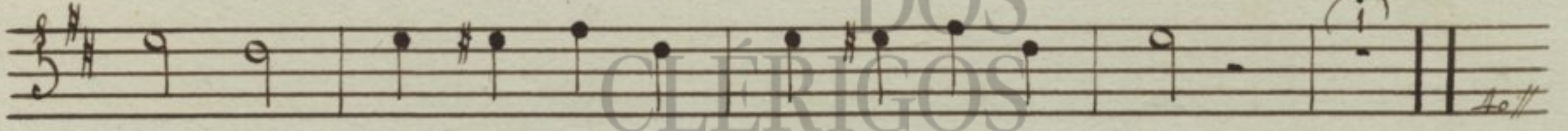
lau - - de di gnissi ma di gnissi ma di gnis - si



ma fe lix es per quem - sal va



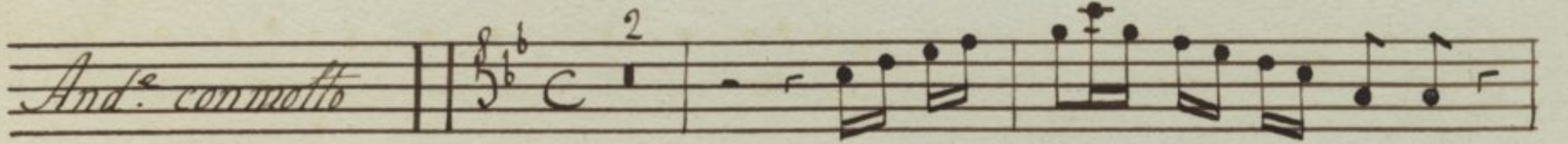
- ti et - - re - dempti su mus *Al*



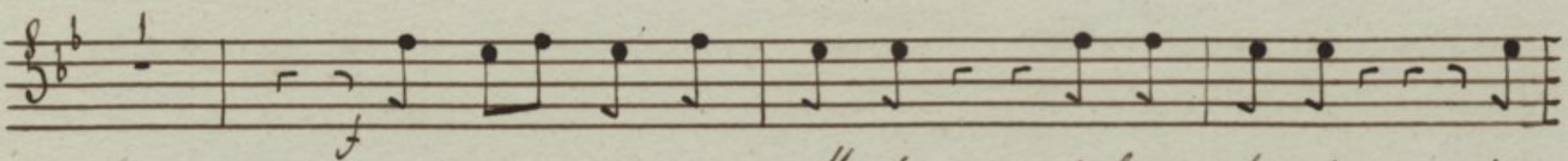
le lu ia Al le lu ia Al le lu ia *4.º //*

V.º Tacet. Al Segno

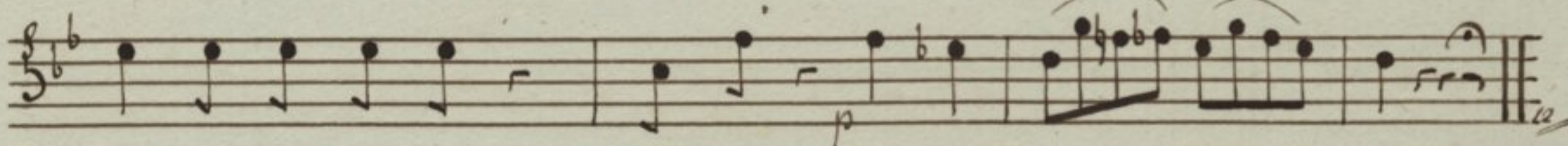
Responsorio 2.º

And.º con moto 

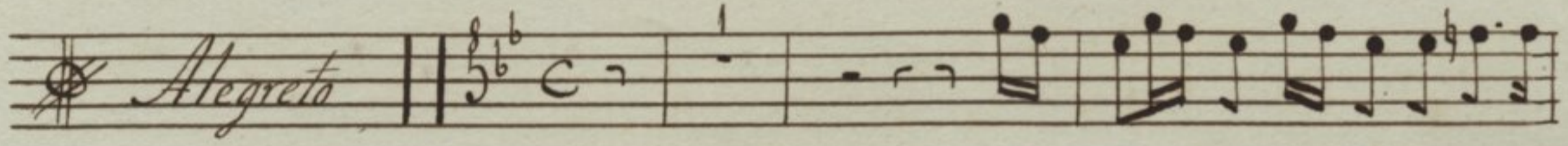
Si ne ta - ctu pu doris



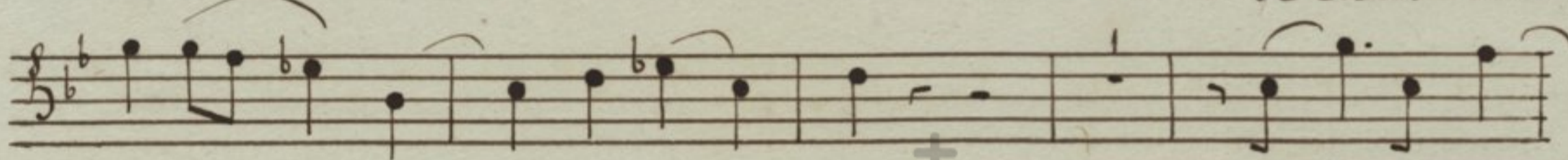
in ven ta es Mater Sal va to ris in



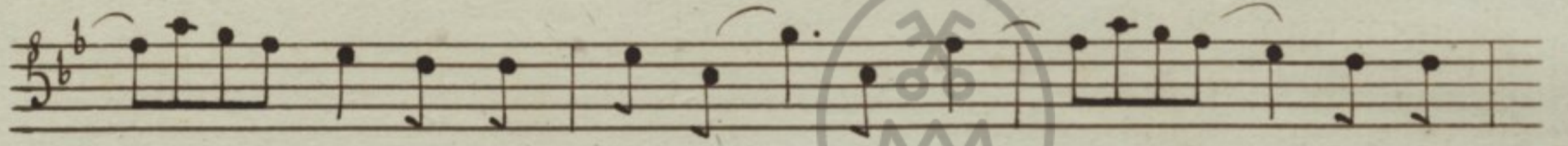
ven ta es Mater Mater Sal va to - - - ris



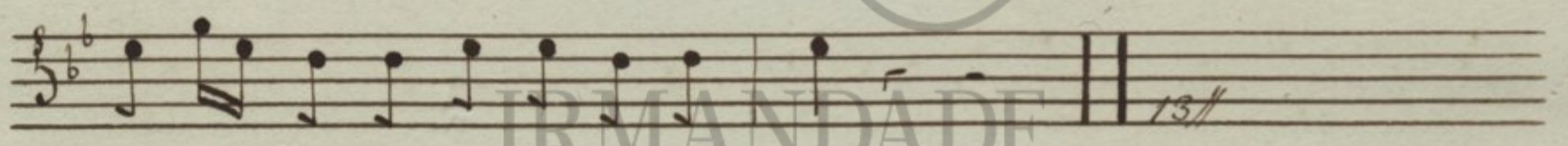
in tu - o se clausit visce



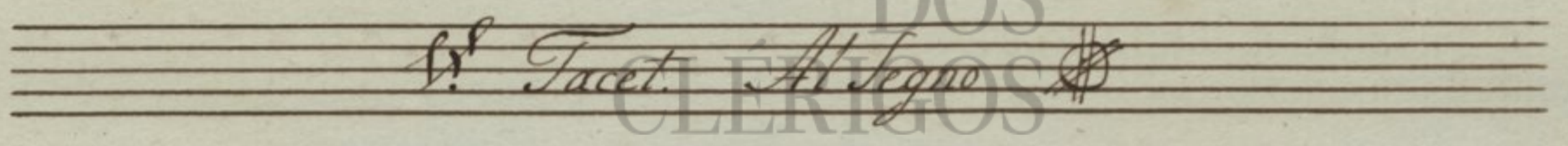
ra fa - - - ctus ho - - mo Al - - -



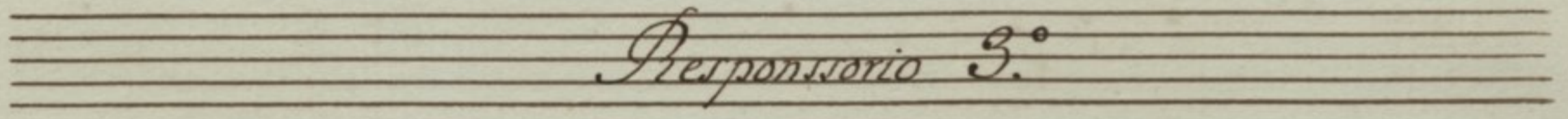
- - - le lu ia Al - - - le lu



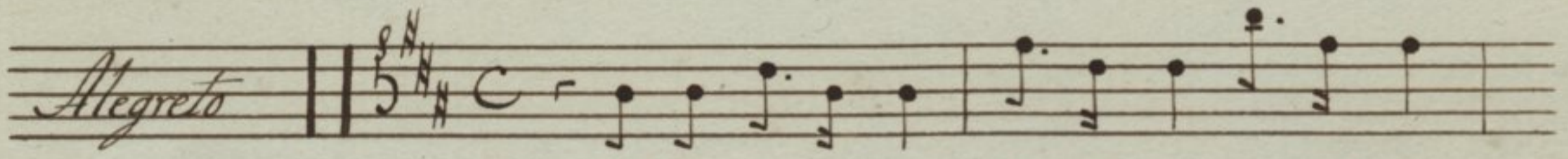
ia Al le lu ia Al le lu ia



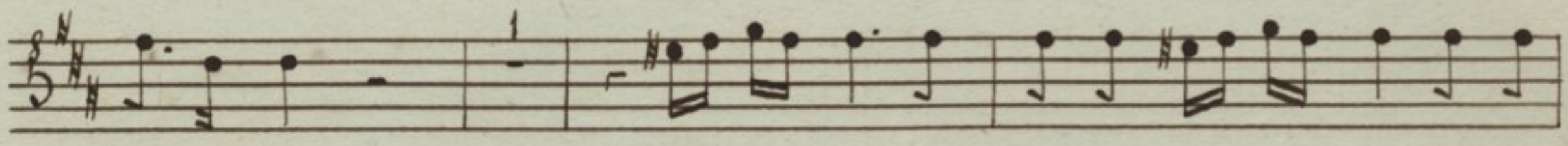
V. Tacet. Al Segno



Responsorio 3.



Mul ta fi li a fi li a fi li a



fi li a mul ta fi li a con gre ga ve runt di

vi ti as di vi ti as tu su per gre ssa

es su per gre ssa es u ni ver - - - sas.

Spe ci o sa fa cta

es et su a vis su a vis in de

li ci is - tu is San - cta San

cta San cta De i ge ni tris Al -

le lu

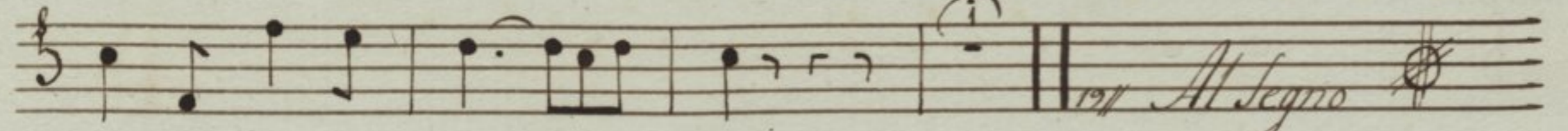
a Al le lu - ia Al le lu ia

Sen ti ant om - nes tu - um ju

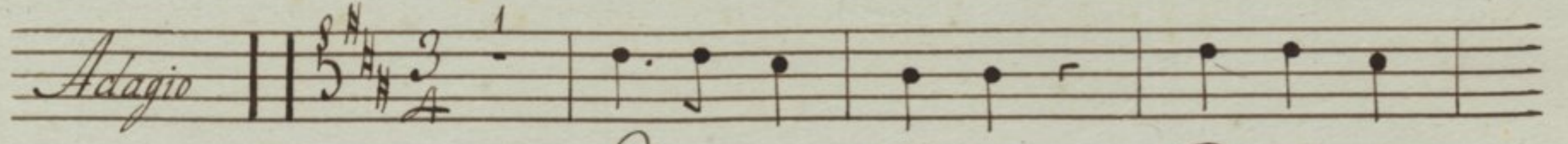
va - men qui cum que ce le brant tu am San - ctam Ma



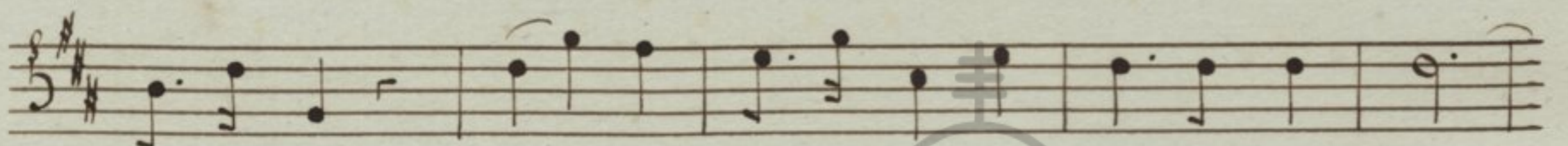
ter ni ta tem qui cum que ce le brant tu am San-



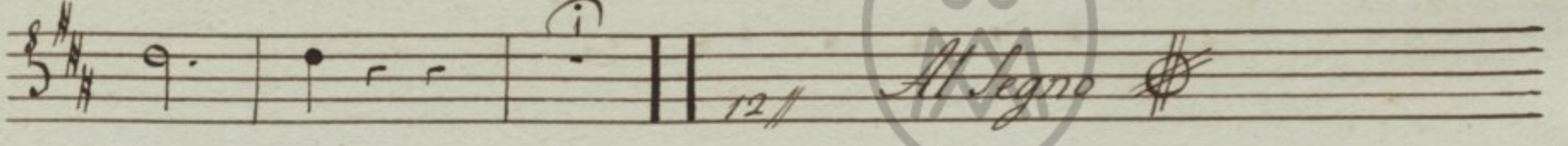
ctam Ma ter ni ta - - tem.



Glo ri a Pa tri Pa tri et

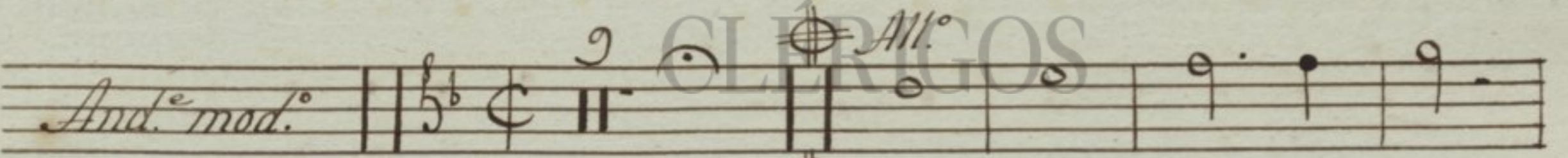


Fi li o et - Spi ri tu i Spi ri tu i San

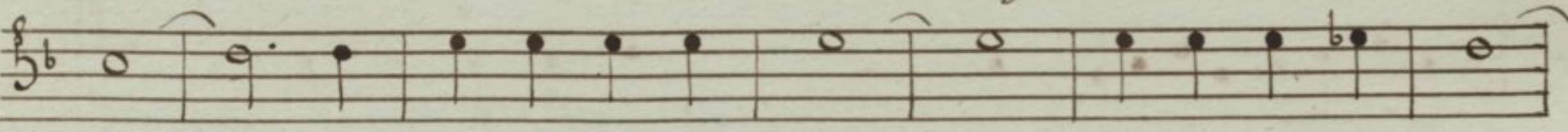


- - - cto.

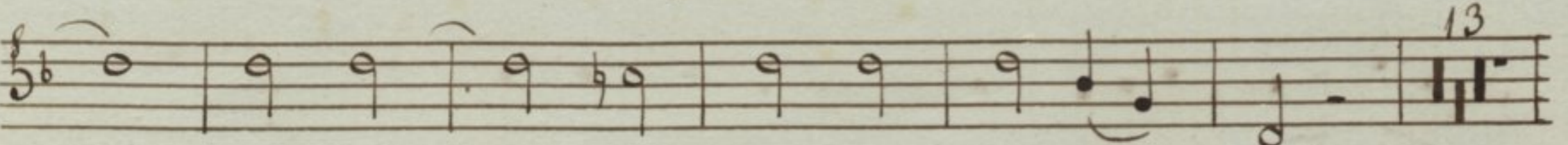
2. Noturno, Responsorio A.



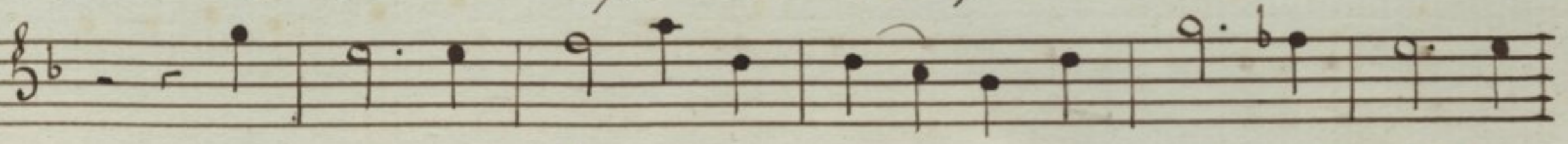
All. Cu jus Do mi nus



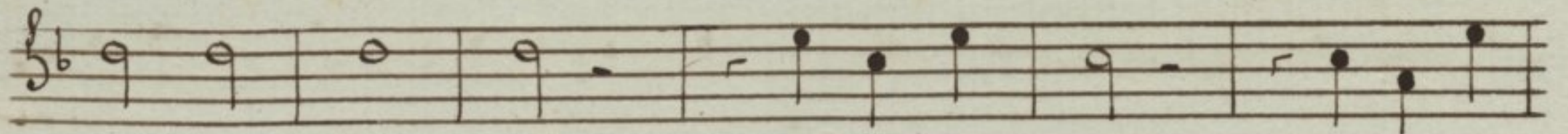
Do - - mi nus hu mi li ta - - tem hu mi li ta



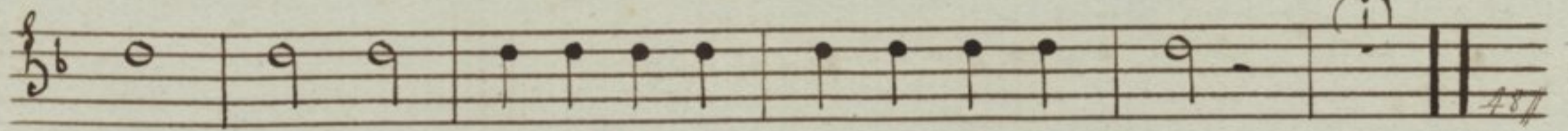
- - tem res - - pe xit res pe - - xit



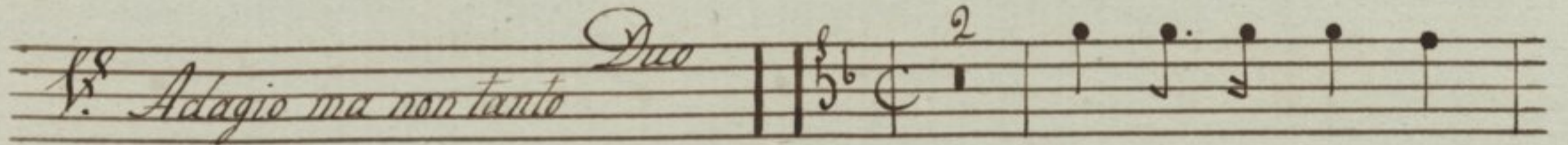
qua An ge lo nun ti an - te con ce pit Sal va



to rem mun di Alle lu ia Al - -



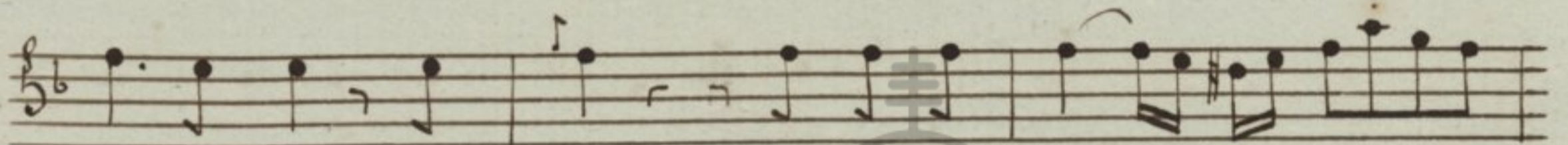
- - le lu ia Alle lu ia Alle lu ia



Adagio ma non tanto

Duo

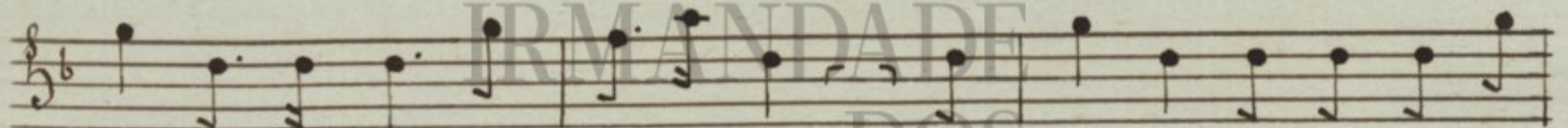
Christum ca na mus



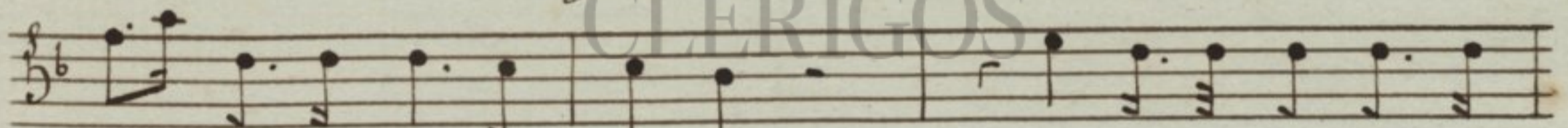
glo ri am in hac San cta So lem - ni ta - -



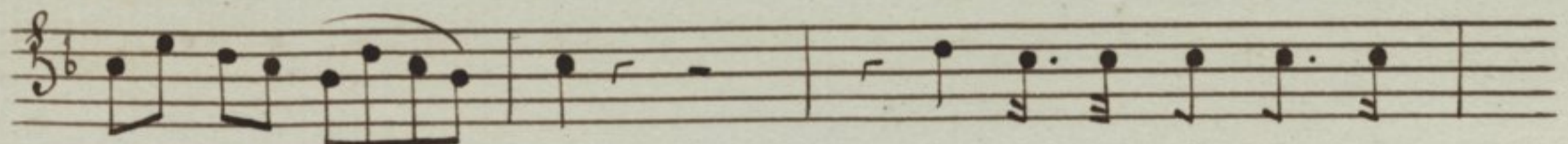
te mi ra bi lis ge ni tri cis De i



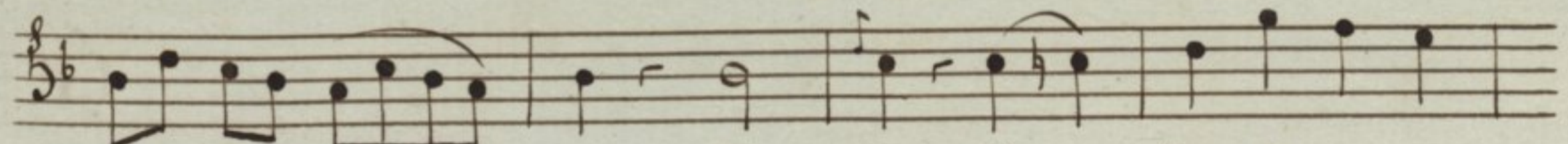
Christum ca na mus glo ri am in hac San cta So le mni



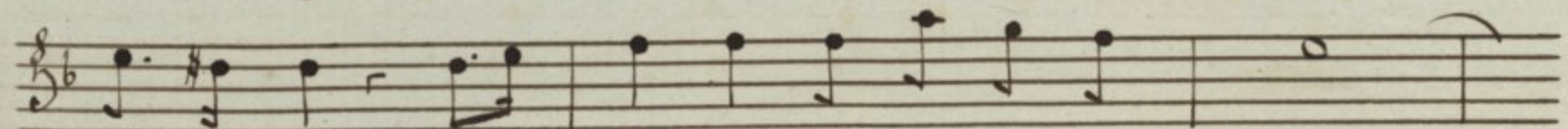
ta te So le mni ta te mi ra bi lis ge ni



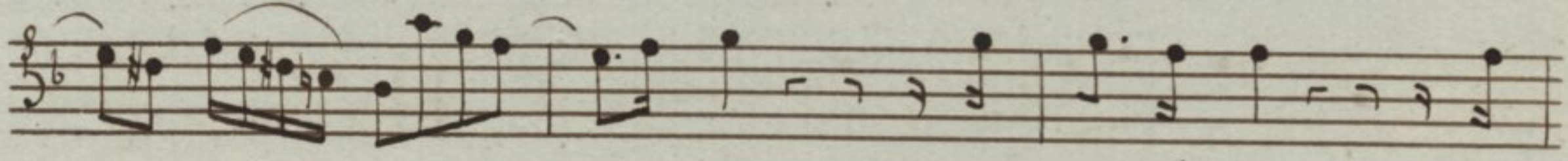
tri cis De - - i mi ra bi lis ge ni



tri cis De - - i Chris tum Chris - tum ca na mus



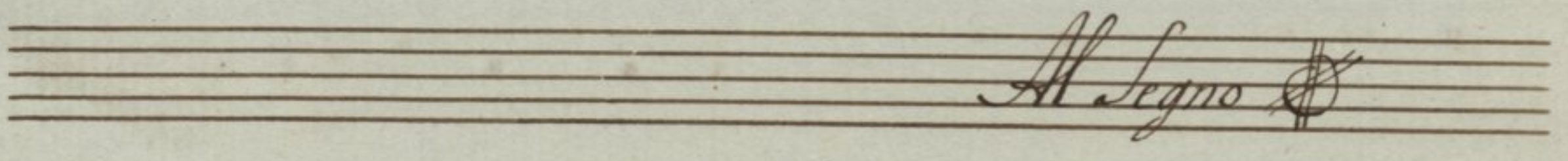
glo ri am in - hac San cta So le mni ta



te mi ra bi lis mi



ra bi lis ge ni tri - - cis De i

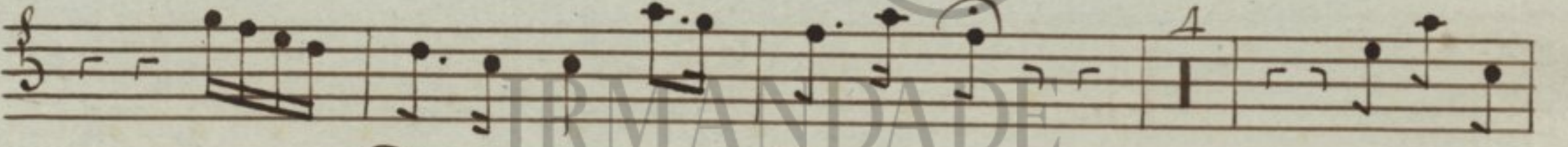


Allegro

Responsorio 5.



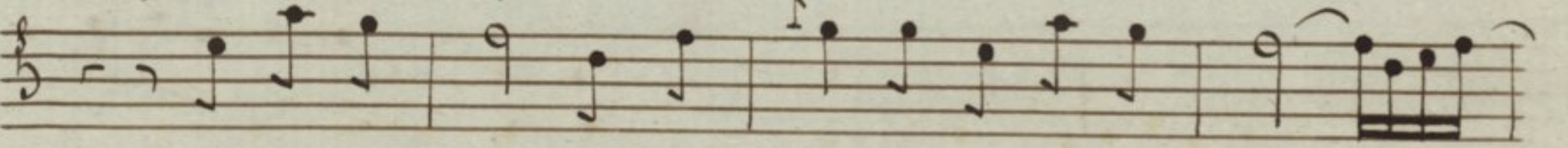
And. con moto Be ne di cta Fi lia tu



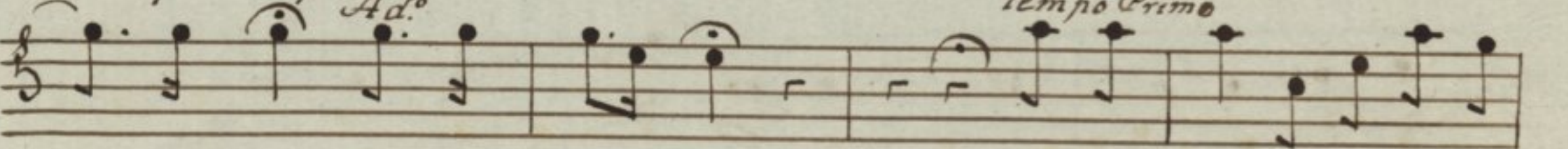
a - Do mi no a - Do mi no qui a per



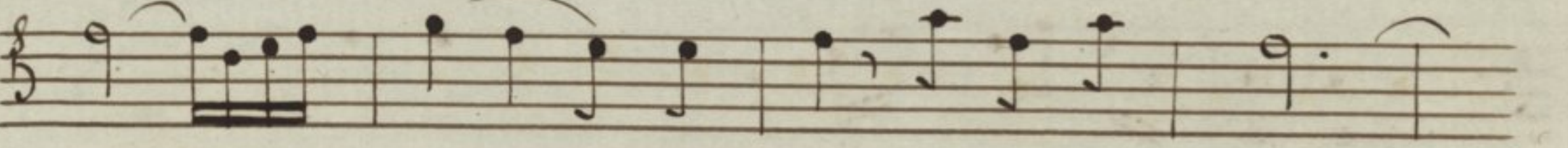
te fru ctum vi ta fru ctum vi ta com mu ni ca vi mus



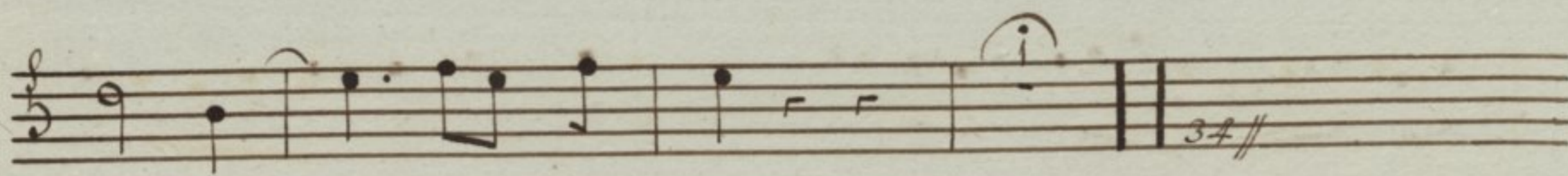
qui a per te fru ctum vi ta com mu ni ca - - -



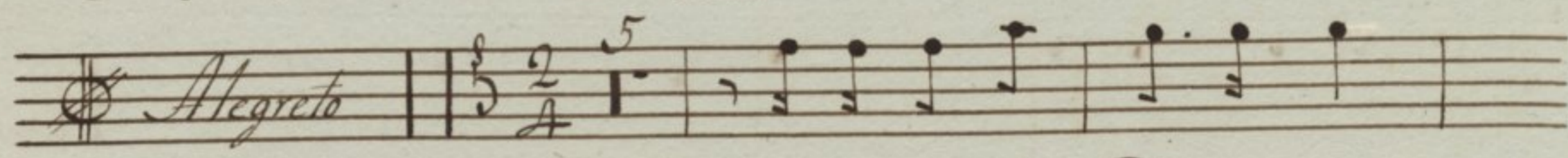
- - vi mus fru ctum vi - ta fru ctum vi ta com mu ni



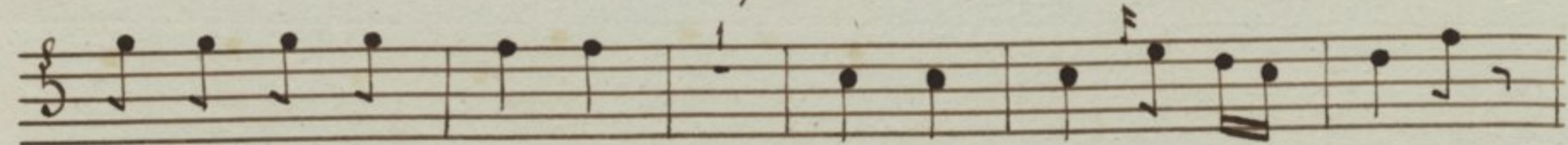
ca - - - - - vi mus Com mu ni ca



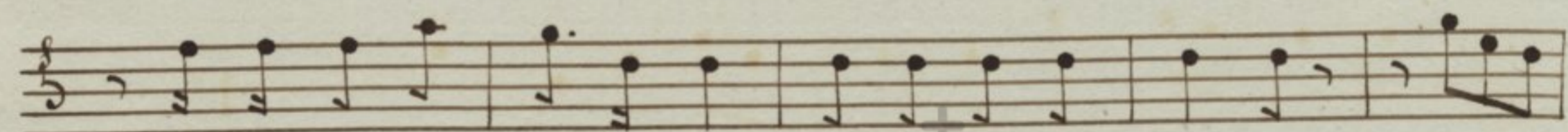
vi mus.



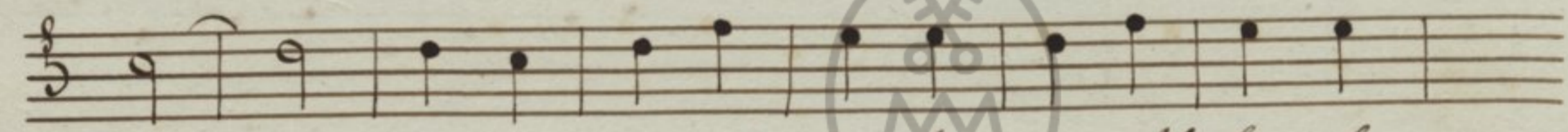
placu is ti Do mi no



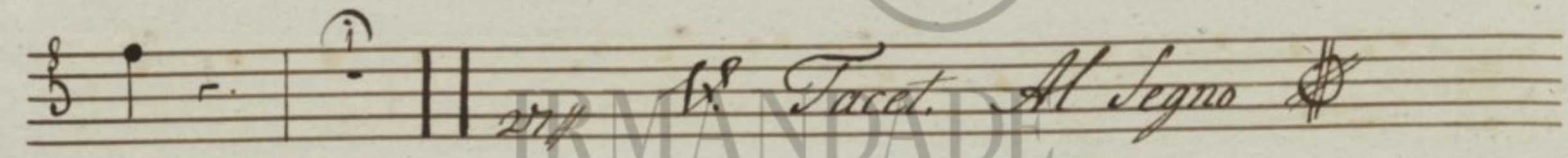
nos tro Je su Chris to So la si ne ex em plo



placu is ti Do mi no nos tro Je su Chris to Al -



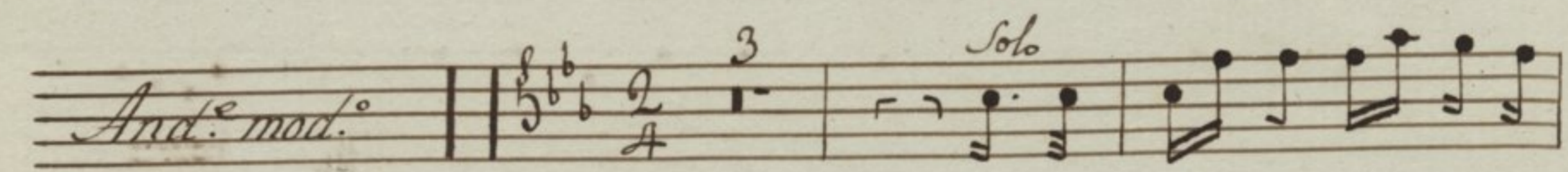
le lu ia Al le lu ia Al le lu



ia

18. Tacet. Al Segno

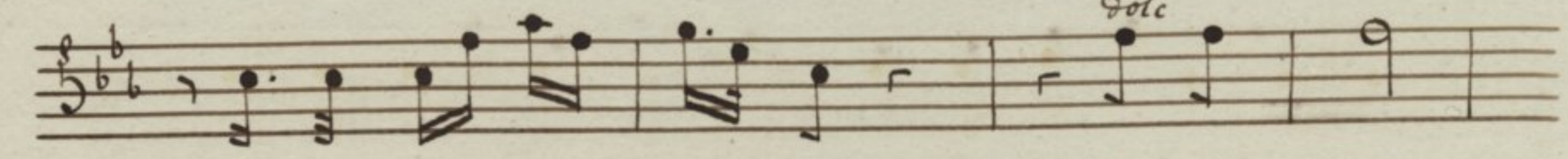
Responsorio 6.º



Be ne di cta in ter mu



li e res et be ne - di ctus



be ne di ctus fru ctus fru ctus ven

cresc

tris fructus ven tris ven tris tu - - -

22 //

i

Solo

Alegreto

Unde hoc mi hi ut ve ni

5

at Ma ter - Do mi ni me i ad me

Al le lu ia Alle lu ia Al

te lu ia Al le lu

ia Al le lu ia

25 //

V. Tacet. Al Segno $\text{\$}$ segue

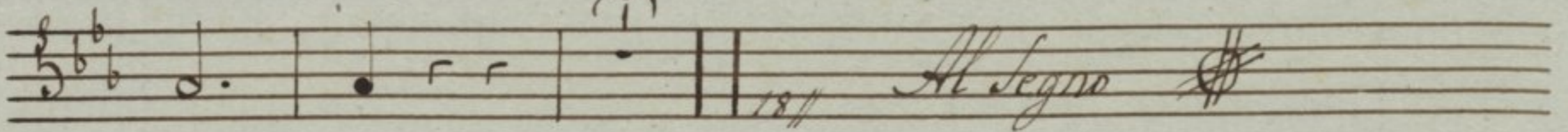
Adagio

Glo ri a Pa tri

Pa tri et Fi li o et Spi ri tu i

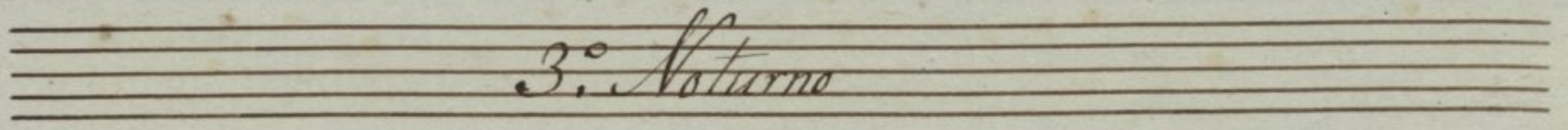


et Spi ri tu i San - - - - - cto

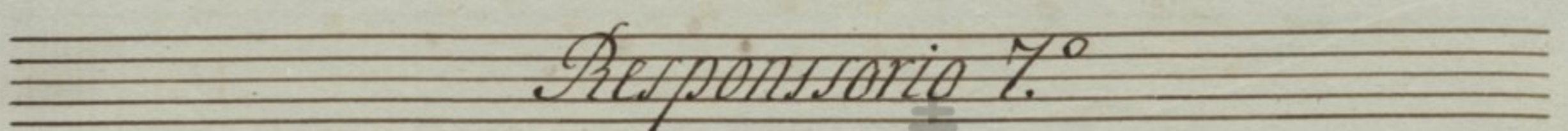


San cto

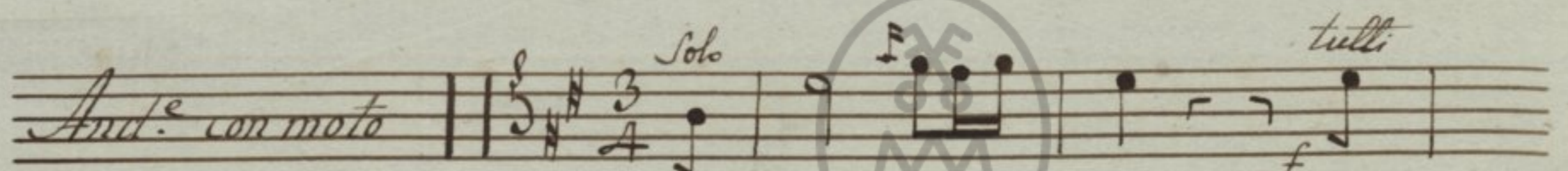
Al Segno



3.º *Noturno*



Responso 7.º



And.º con moto

Solo

tutti

Be a - - - ta Be



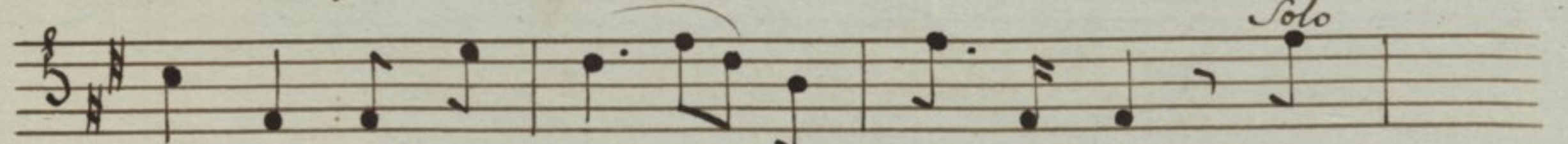
a ta es vir go es vir - go Ma ri a



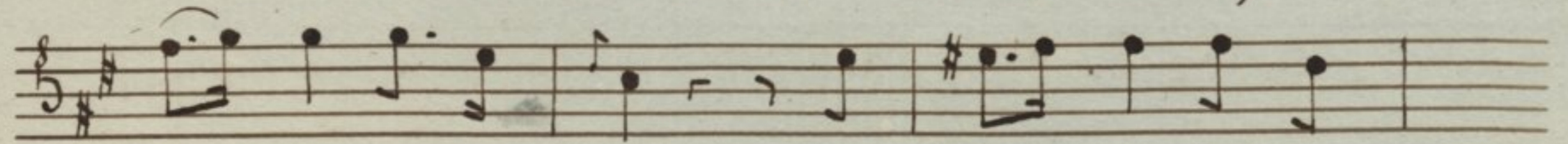
De - i ge ni trix be a ta es be a ta



es que cre di dis ti - Do mi no cre di



dis ti cre di dis - ti Do mi num per



fe - cta sunt in te per fe - cta sunt in

te quo di cta sunt quo di cta sunt quo
 di cta sunt ti bi per fe cta sunt in
 te quo di cta sunt ti bi quo di cta sunt quo
 di cta sunt quo di - cta sunt ti - - bi.

All. pro pte re a pro-
 pte re a be ne di xit te Deus in a
 ter - num Al le lu ia Al le lu
 ia Al le lu ia

Tacet, Al Segno

Gloria do 2.º Responso

Adagio non tanto

Solo

Glo - ri - a Pa - tri

Pa - tri et Fi - li - o et Spi - ri - tu i

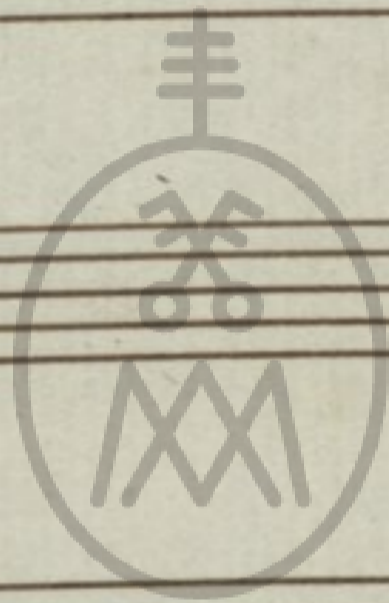
San - - - - - cto Spi - ri - tu i Spi

ri - tu i San cto

IRMANDADE
DOS
CLÉRIGOS



IRMANDADE
DOS
CLÉRIGOS



IRMANDADE
DOS
CLÉRIGOS