

*Siple*

*Matinas da Maternidade de N. Sra.*

*a 4 vozes e Org.*

*Dedicadas*

*Ao Illmo e Rmo Sr Antonio Moreira*

*Conêgo da S.ª Sé Primaz de Braga*

*por*

*IRMANDADE*  
*Antonio da Silva Leite*

*Mestre da Capella da S.ª Sé do Porto*

*DOS*  
*CLÉRIGOS*

*Anno de 1811*



Tiple

Invitatorio

Adagio

Solo

Ma ter ni - ta - - - tem Ma ter ni

ta - - - - tem be a - ta Ma ri a

vir gi nis ce le bre

mus

Christum e jus

Fi li um a do re mus Do mi num Al - - -

CLERIGOS

le lu ia

a - do re -

mus Do - - - mi num Al - le - - - lui

40//

Segue

a







4.<sup>o</sup>

Voces Pa - rentis ex ci pit vo tis que

Natus a nu - it hanc quis que sem per di li

gat re bus quem ar ctis in vo cet.

1.<sup>o</sup> Noturno Responsorio 1.<sup>o</sup>

*Solo*  
And.<sup>e</sup> mod.

Fe - lix es sa cra

vir - - go - Ma ri a et om - ni -

lau de lau - - de di gni si ma

fe - lix es fe lix es Ex qua hor tus

est sol jus ti ti - & Chris tus De - - -

- us nos - - - ter



*Solo*

Al le lu ia Al le lu ia Al le lu

ia Al le lui a

*V. Tacet. Allegro*

*Responsorio 2.*

*And. con moto*

*Solo*  
Si ne ta tu pu do ris in

ven ta es mater sal - va to ris in

ven ta es Mater Sal - va to ris si ne ta ctu

ta ctu pu do ris in ven ta es Ma ter

Ma ter Sal va to - - - - ris

*Solo*

*Allegretto*  
Qui ca lum ter am qua re - git in



tu o se clau sit vis ce roa fa - - ctus ho

mo Al - - - - - le lu ia Al

- - - - - le lu ia Al - - - - - le lu

ia Al le lu ia Al le lu ia

Be ne di cta

tu in muli e ri bus et be ne di ctus

fru ctus be ne di ctus fru ctus fructus bentris

tu i be ne di cta tu in mu li

e ri bus et be - - - - - ne dictus fructus fructus

ven - - - - - tris tu - - -



*i be ne di cta tu in mi li e ri bus*

*et be ne di tus fructus ven tris tu i*

*be ne di ctus fructus fructus ven tris tu i fructus*

*ven*

*tris tu*

*i be ne di ctus fructus fructus ven tris tu i*

*All Segno*

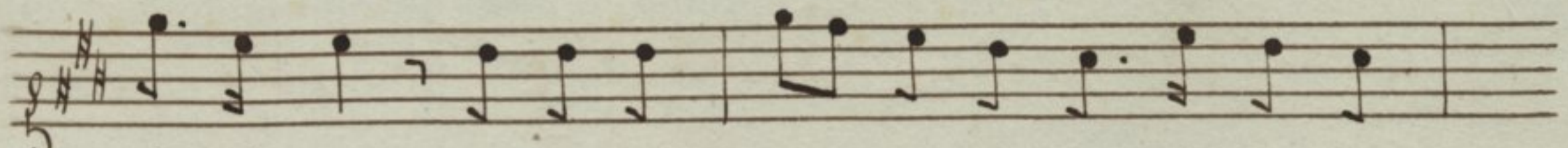
*Responso 3.º*

*Allegretto*

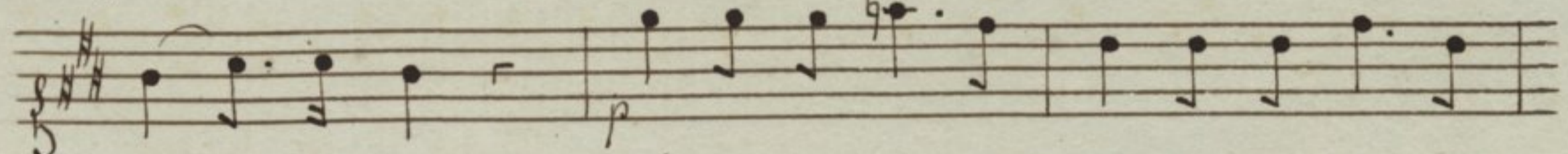
*Mul ta fi li a fi li a*

*fi li a con gre ga verunt di vi - ti as mul ta*

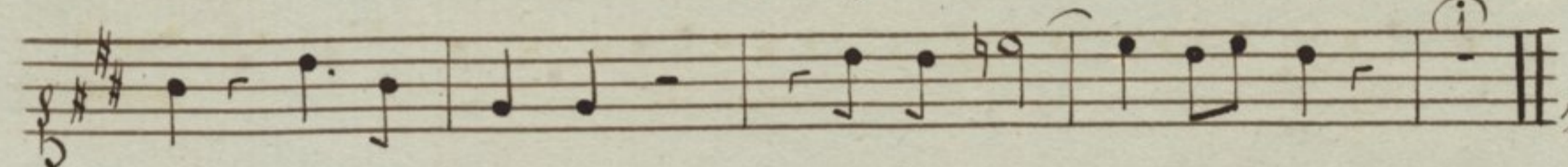




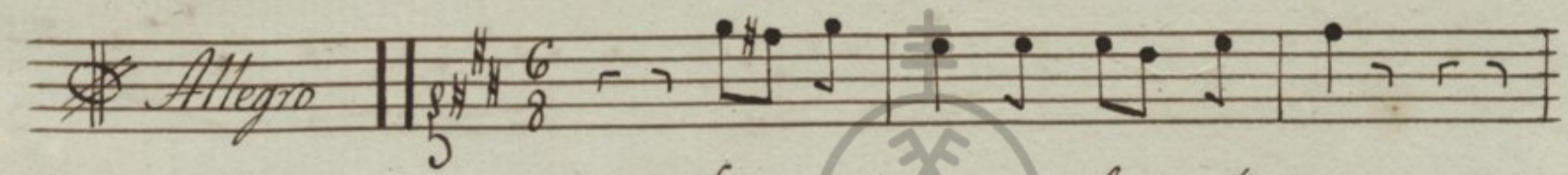
fi li a con gre ga ve - runt di vi ti as di



vi - ti as tu su per gre ssa es su per gre ssa

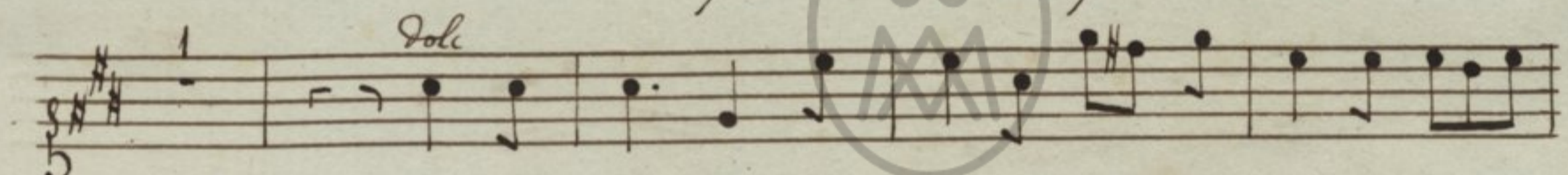


es u ni ver sas u ni ver - - - sas

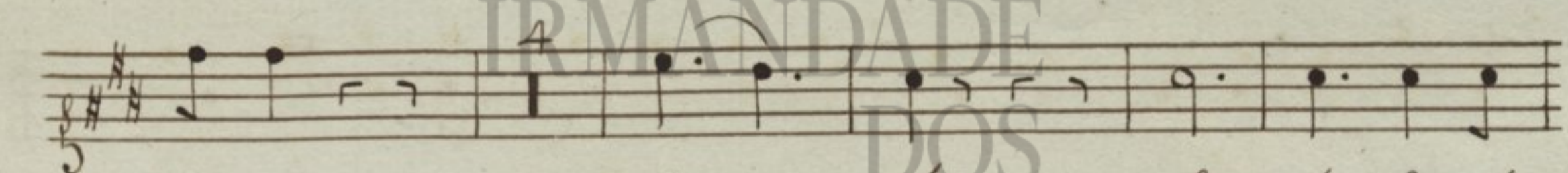


*Allegro*

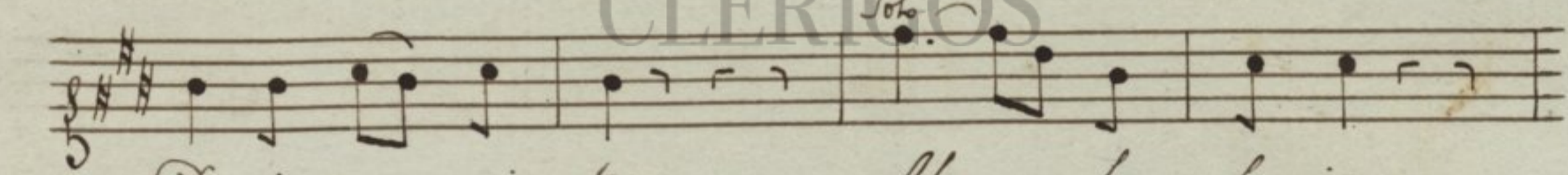
Spe - ci o sa fa cta es



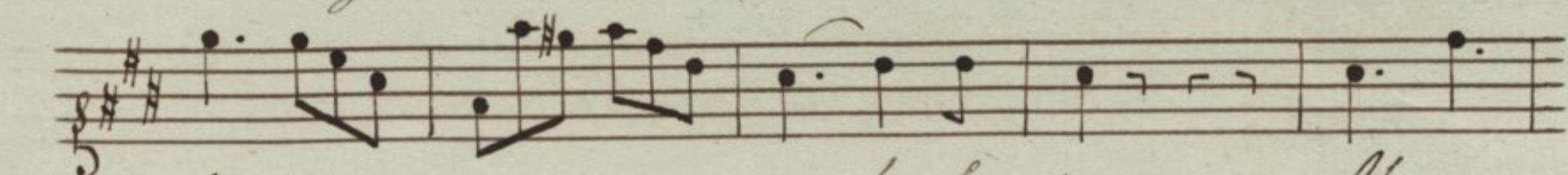
et su a vis su a vis in de li ci is -



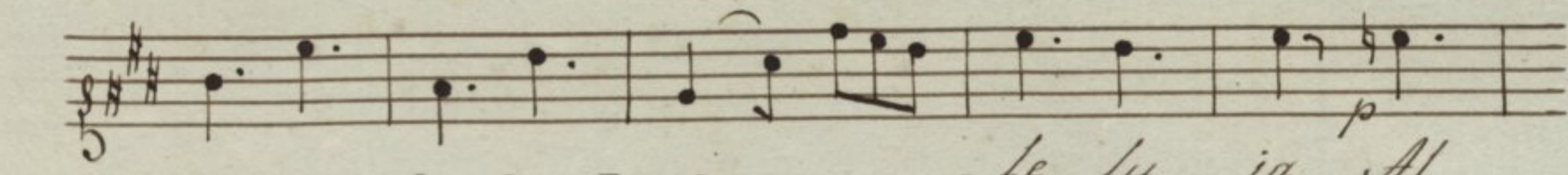
tu is San - - - cta San cta Sancta



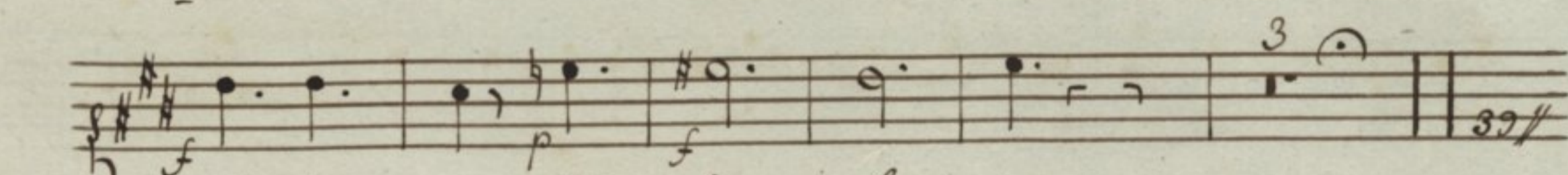
De i ge ni tris Al - - le lu ia



Al - - - - - le lu ia Al - -



- - - - - le lu ia Al



le lu ia Al le lu ia





*Adagio*

Senti ant om - nes tu - um ju

va - men ju va - men Senti ant qui cum que ce le

brant tu am San - - cta Mater ni ta - - -

tem

*Allegro*

*Ad.*

Glo ri a glo ri a Pa - tri Pa tri et

Fi li o et Spi ri tu i Spi ri tu i San - -

- - - cto

*Allegro*

2.º Noturno Responsorio 4.º

*Solo*

*And. mod.*

Glo ri o se Vir gi nis - Ma

ri - a Mater ni ta tem di - gni ssi mam re co



la - mus re co la - - - mus

Cu - jus Do mi

num hu mi li ta - - - tem

hu mi li ta - - - tem res pe - xit res -

pe - - - xit que Ange lo nun ti

an te con ce - - - - -

- - - pit Sal va to - rem - mun - - - di qua

An ge lo nun ti an - te con ce pit

Sal - - va to rem mun di Al le lu ia

Al le lu ia Al - - - - - le lu

IRMANDADE DOS CLÉRIGOS



ia Alleluia Alleluia

V. Tacet, Al Segno

Responsorio 5.

And. con moto Solo

Be ne di cta Fi lia tu a -

Do mi no a - Do mi no be ne di cta Fi lia

tu a - Do mi no a - Do mi no qui a per

te fru ctum vi - te fru ctum vi. te com mu ni

ca - vi mus com mu ni ca vi mus fru ctum vi

te fru ctum vi - te cu mu ni ca vi mus per

te fru ctum vi te com mu ni ca vi mus



*tempo primo*

fructus vite commo ni ca

vi mus commo ni ca

mus.

*Solo*

*Alegreto*

So la si ne ex em plo si ne ex

em plo so la So la si ne ex

em plo si ne ex em plo pla eu is ti Do mi no

nostro Je su Christo Al - - - - - Le lu

ia Al le lu ia Al le lu ia

*Adagio*

*Duo*

Nostras depre ca ti o - nes ne des

spi ci as ne des pi ci as in ne ce ssi -



ta ti bus nos - tris in ne ce ssi ta ti bus  
 nos tris et a pe ri cu lis cun ctis li be ra -  
 nos San cta De - i ge ni tris li be ra  
 nos - li be ra nos San - cta De - i  
 ge ni tris li be ra nos - li be ra - nos -  
 San - cta De - i ge ni tris San cta De  
 - i ge ni tris.

*Responso 6.*

*And. mod.*  
 Be ne di cta in ter mu  
 li e res Be ne di cta in ter mu li e



res et be ne di ctus be ne di ctus

ventris fructus ven tris fructus ven tris

ven tris tu i

*Allegretto* Un de hoc mi hi ut ve ni

at Ma ter Do mi ni me i ad me Al le lu

ia Al le lu ia Al

le lu ia Al le lu ia Al le lu ia

*And. mod.* Res pe sit res

pe sit hu mi li ta tem an ci le an ci le

su a res pe - sit res pe - - sit hu mi li



*Allegretto*

ta tem an ci le su a et fe cit mi hi

ma gna qui po tens po tens est fe cit mi hi

ma - gna qui po tens po tens est

*primo tempo*

res pe - sit re pe - sit hu mi li ta tem an ci la

su a res pe - sit res pe - sit hu mi li

*Allegretto*

ta tem an ci le an ci le su a et

fe cit mi hi ma gna qui po tens po tens est

fe cit mi hi ma - gna qui po tens po tens est

fe - cit fe cit

mi - - hi

fe cit mi - - hi

IRMANDADE DOS CLÉRIGOS



Musical staff with notes and rests.

*mi hi ma*

Musical staff with notes and rests.

*mi hi ma gna qui po - - tens est fe cit*

Musical staff with notes and rests.

*mi hi ma gna qui - po tens po tens est fe cit*

Musical staff with notes and rests.

*qui po - tens est.*

Musical staff with notes and rests.

*Adagio*

Musical staff with notes and rests.

*Glo ri a Pa - tri Pa tri et*

Musical staff with notes and rests.

*Fi - li o*

Musical staff with notes and rests.

*et Spi ri tu i et - Spi*

Musical staff with notes and rests.

*ri tu i San cto Spi ri tu i San - -*

Musical staff with notes and rests.

*cto.*

Musical staff with notes and rests.

*cto.*

Musical staff with notes and rests.

*cto.*

Musical staff with notes and rests.

*cto.*

Musical staff with notes and rests.

*cto.*

Musical staff with notes and rests.

*cto.*

Musical staff with notes and rests.

*cto.*

Musical staff with notes and rests.

*cto.*

Musical staff with notes and rests.

*cto.*

Musical staff with notes and rests.

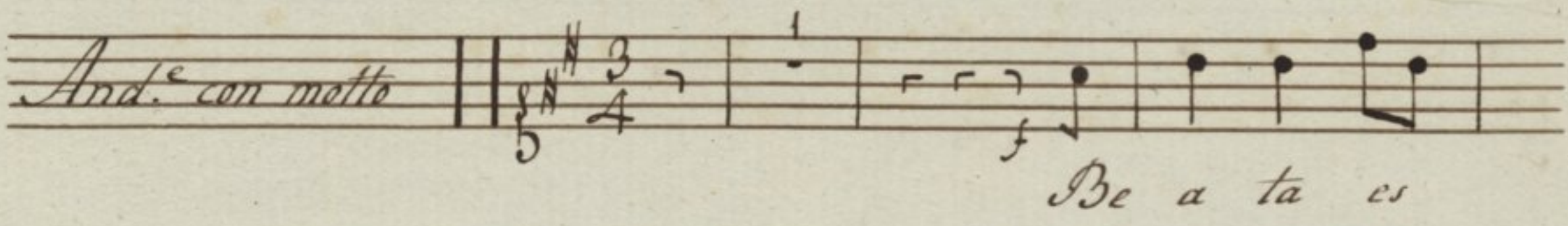
*cto.*

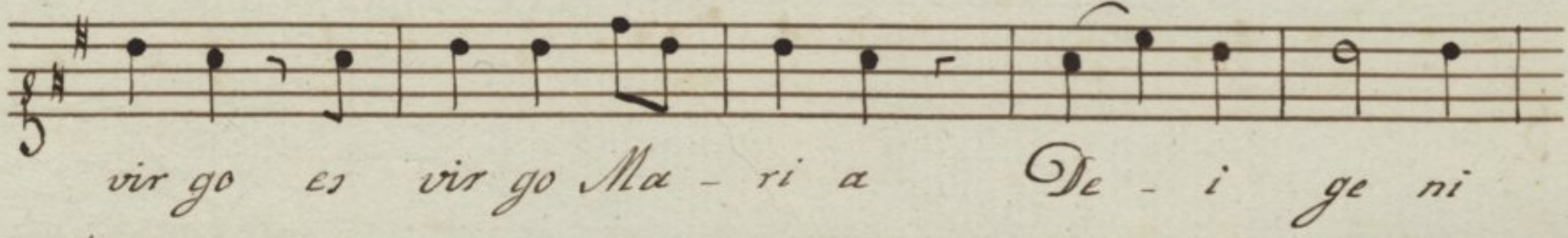
Musical staff with notes and rests.

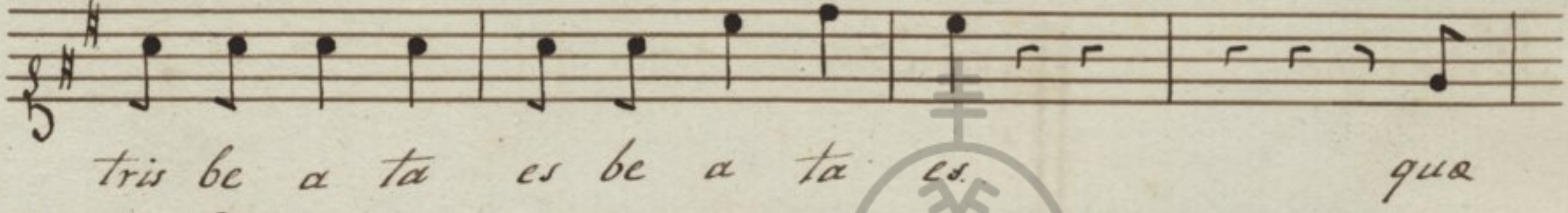
*Allegro*

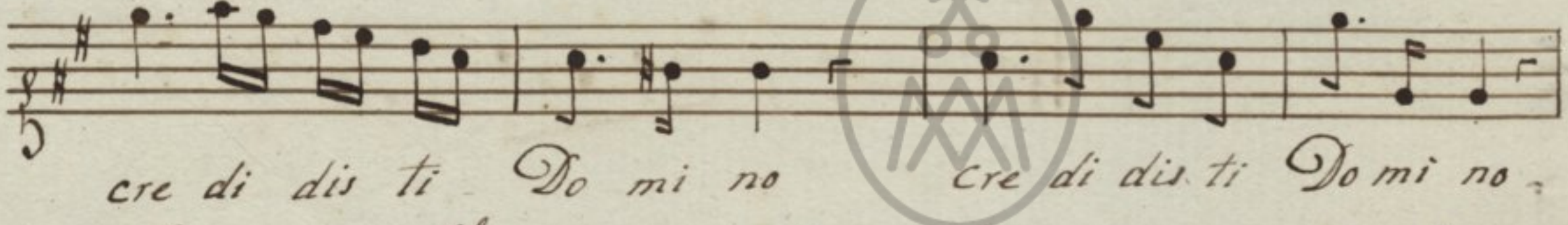


3.º Noturno      Responorio 7.º

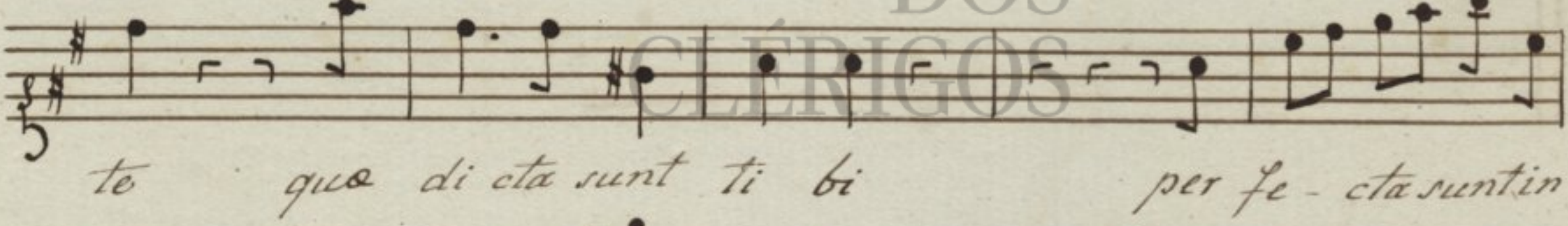
*And.º con moto*  *Be a ta es*

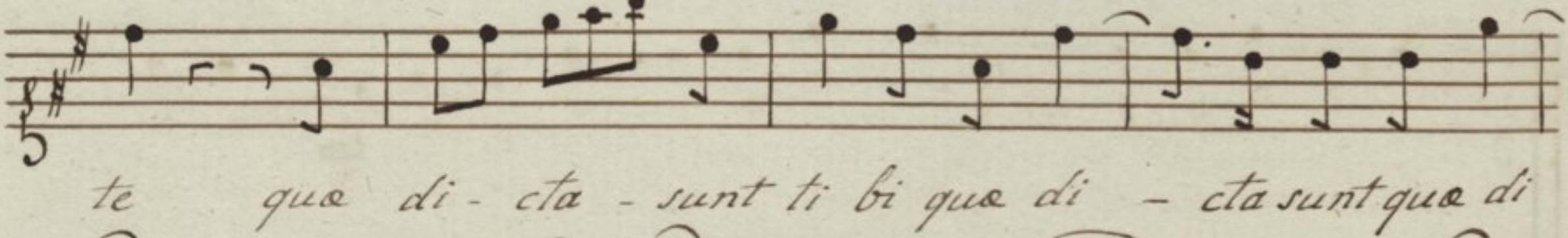
 *vir go es vir go Ma - ri a Se - i ge ni*

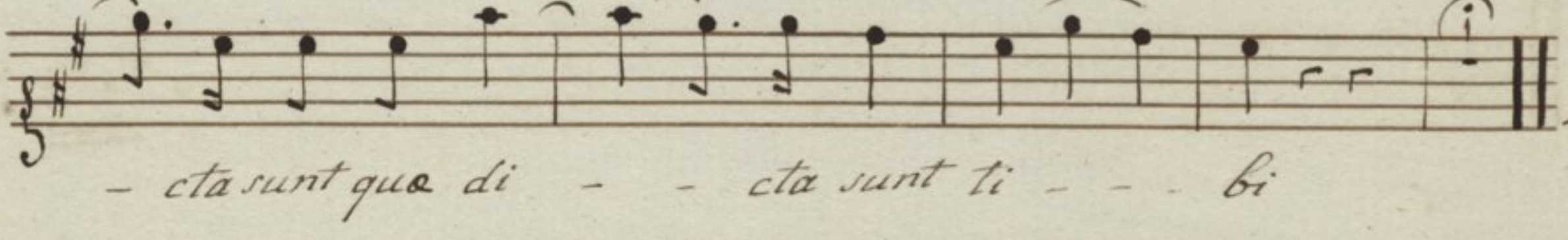
 *tris be a ta es be a ta es. qua*

 *cre di dis ti Do mi no cre di dis ti Do mi no*

*6*  *per fe - cta sunt in te per fe - cta sunt in*

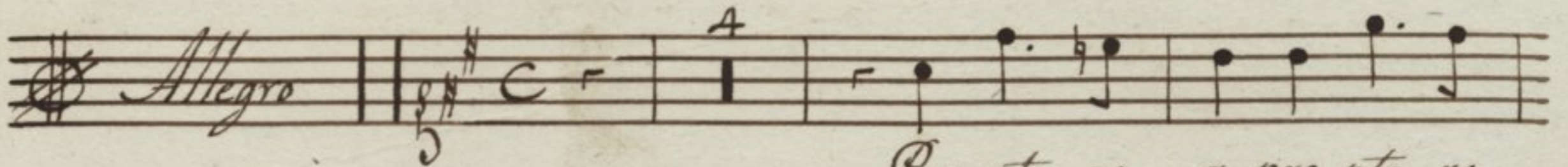
 *te que di cta sunt ti bi per fe - cta sunt in*

 *te que di - cta - sunt ti bi que di - cta sunt que di*

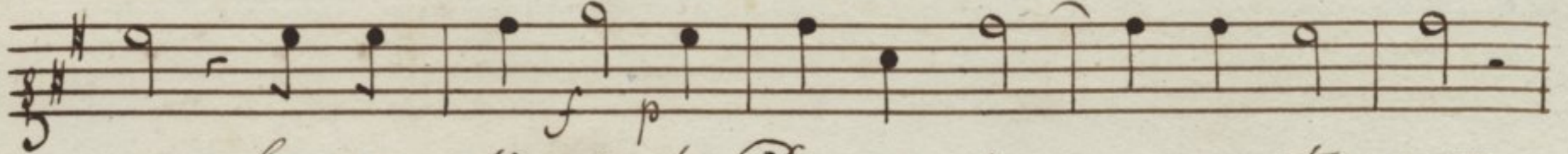
 *- cta sunt que di - - cta sunt ti - - bi*

*Volti Subito*

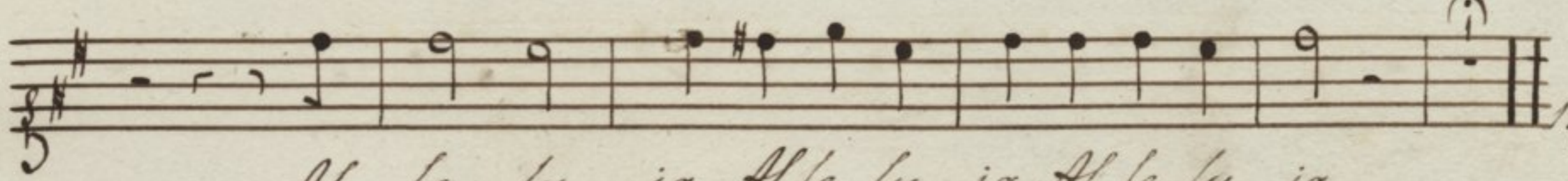


*Allegro* 

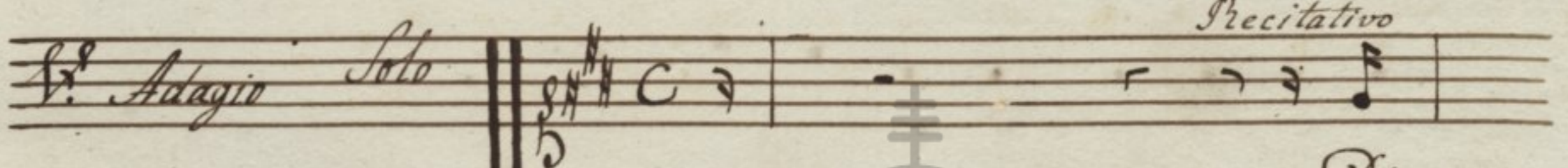
Pro pte re a pro pte re



a be ne di xit te De us in - a ter num

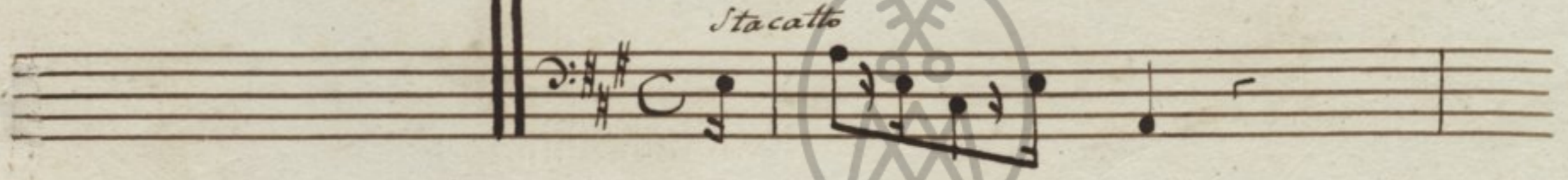


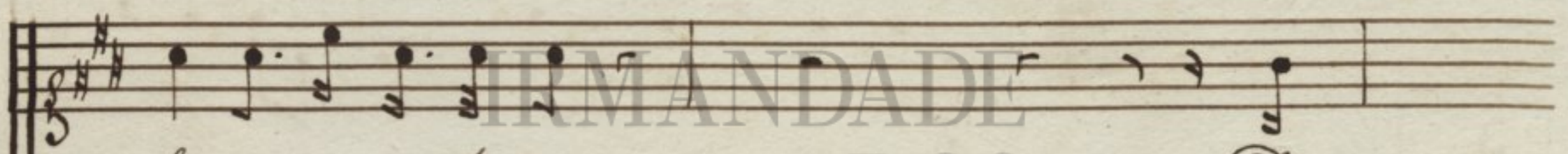
Al le lu ia Al le lu ia Al le lu ia

*V. Adagio Solo* 

*Precitativo*

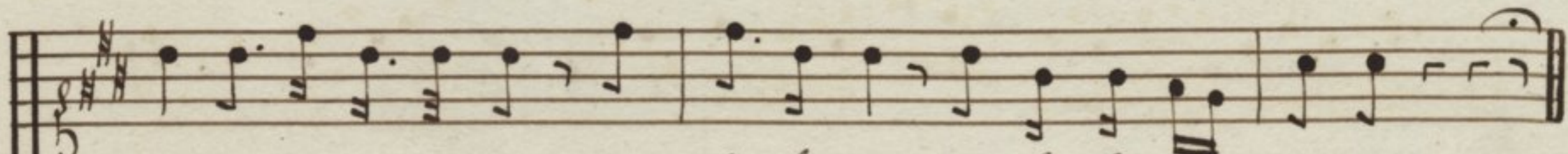
Di

*Stacatto* 

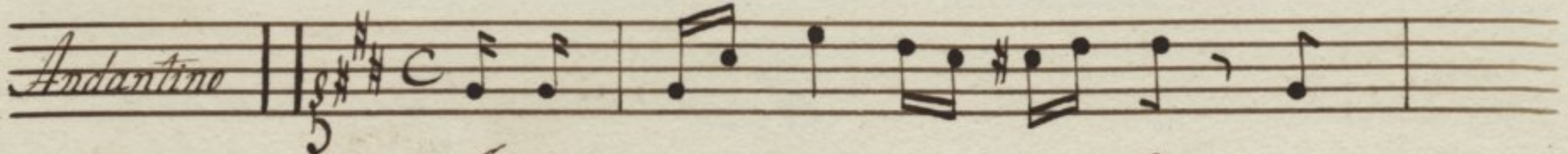


fu sa es gra ti a

Di



fu sa es gra ti a in la bi is in la bi is tu is

*Andantino* 

In ter ce - de pro no bis pro

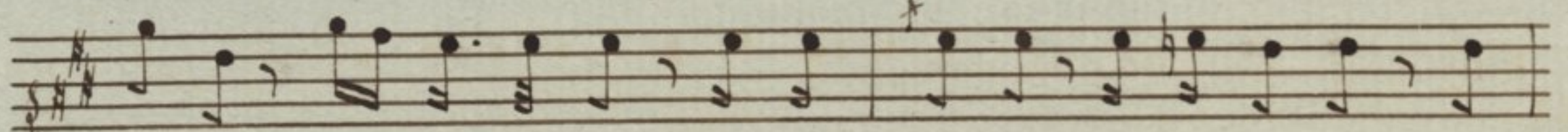




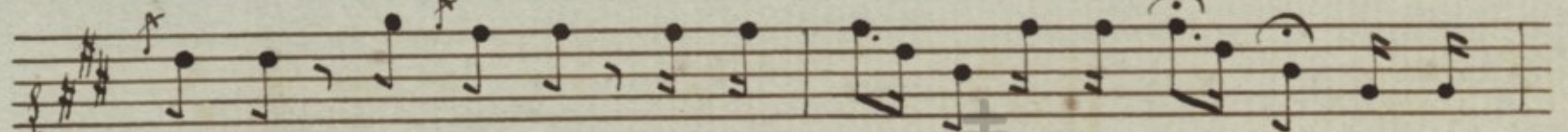
no - bis in ter ce de ad - - Do mi num Do mi num De um



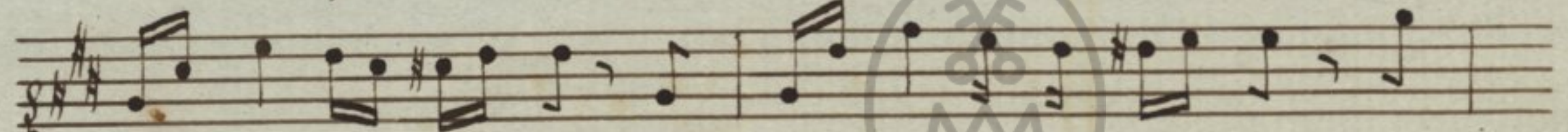
nostrum in ter ce de pro - no - bis pro no bis in ter



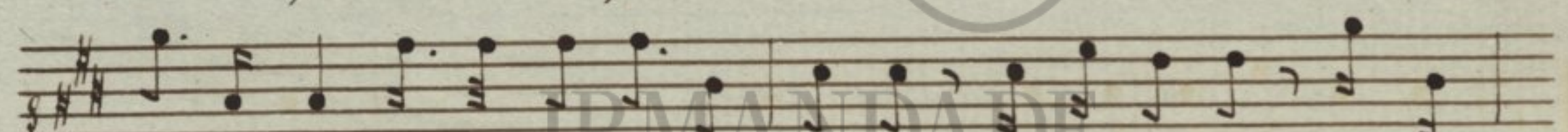
ce de ad Do mi num De um nostrum in ter ce de pro



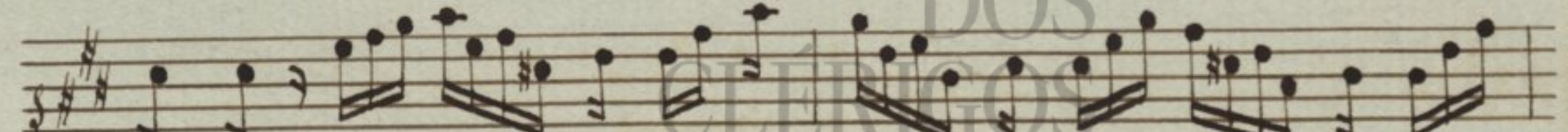
no bis pro no bis in ter ce de in ter ce de in ter



ce - de pro no - bis pro no - bis in ter ce - de ad



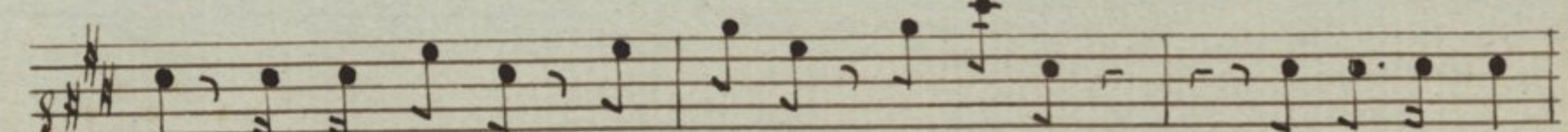
Do mi num Do mi num De um nostrum in ter ce de in ter



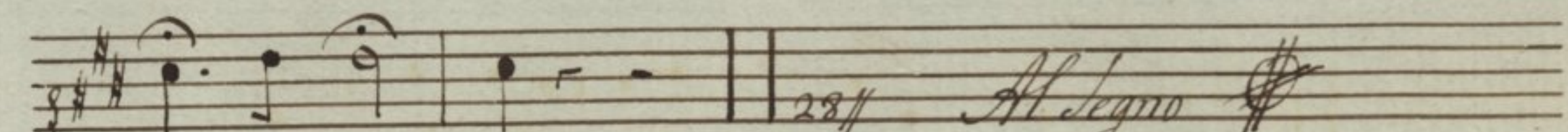
ce de pro - no - bis in ter ce - de pro - no - bis ad -



Do - - - - - mi num De um nos -



trum in ter ce de pro no bis pro no bis ad Do mi num



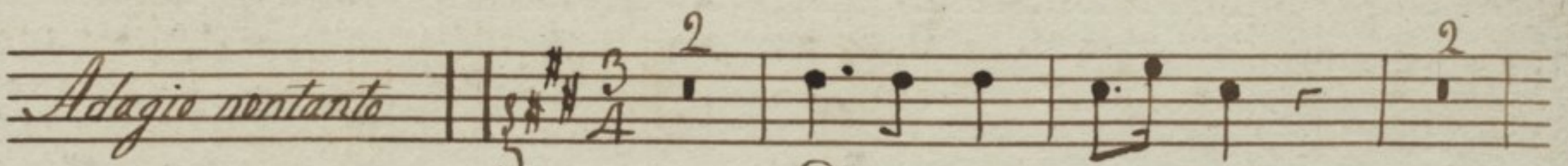
De um nos trum.

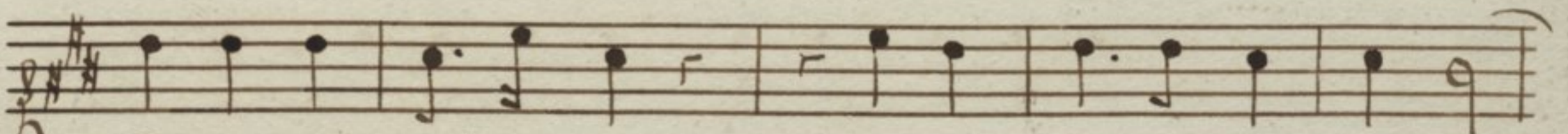
28//

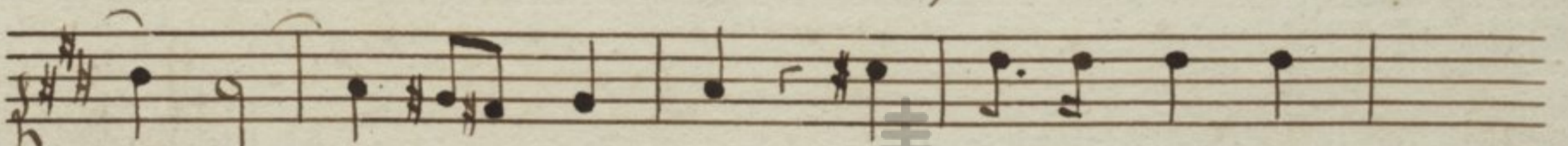
*Allegro*

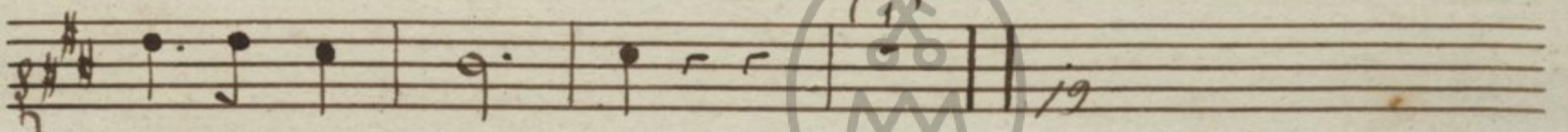


*Gloria do 2.º Responso*

*Adagio non tanto*  *Glo ri a. Pa - tri*

 *Pa tri et Fi li - o et Spi ri tu i San -*

 *cto Spi ri tu i Spi*

 *ri tu i San cto* 19

IRMANDADE  
DOS  
CLÉRIGOS