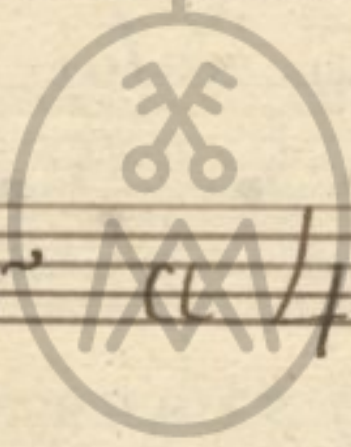


Abril 4839.

Responsoria

In

Nativitate Domini

Tenor 

IRMANDADE  
DOS  
CLÉRIGOS

Pertencem a Irmandade dos Clerigos



*All.<sup>e</sup>*

# Invitatorio

*Largo* *Chriſtuy natuy natuy est.*

*nobij ve-ni-te a-do-remuy a-do-remuy*

*Chriſtuy natuy natuy est nobij Chriſtuy*

*na-tuy est no-bij Chriſtuy natuy est*

*nobij ve-ni-te ve-ni-te a-do-*

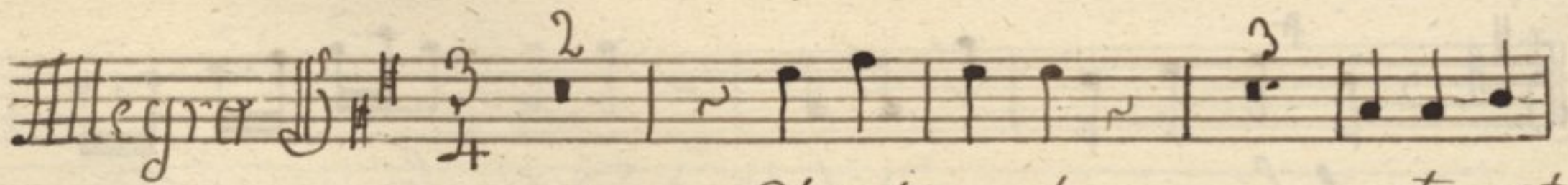
*remuy a-do-remuy Chriſtuy natuy*

*na-tuy est nobij ve-ni-te a-do-*

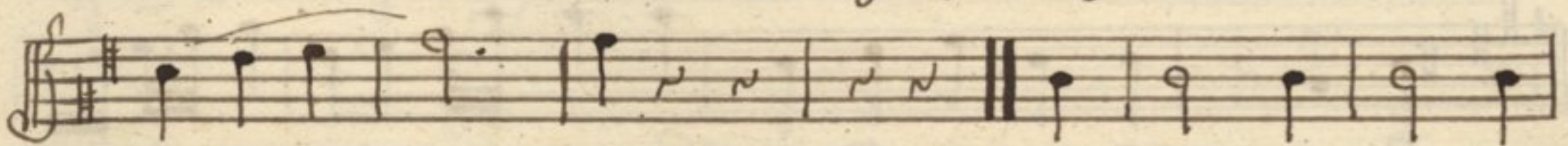
*re-muy a-do-remuy a-do-*

*remuy. segue*

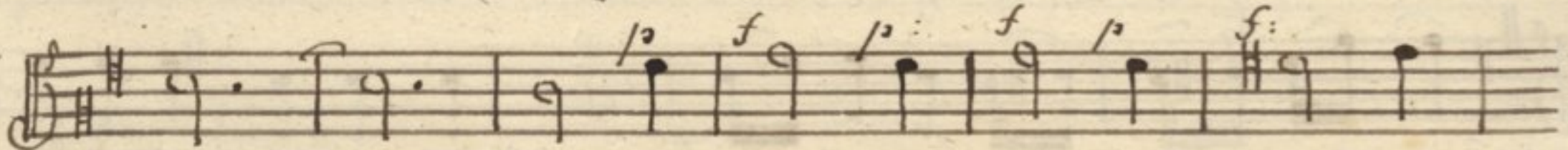




Christus natus natus est



nobilis. Venite adore-

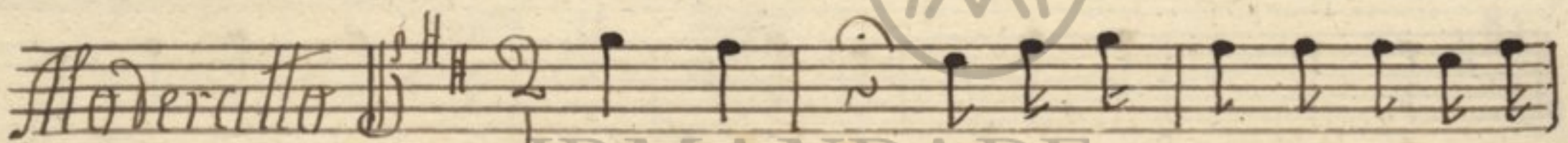


remus venite adoremus

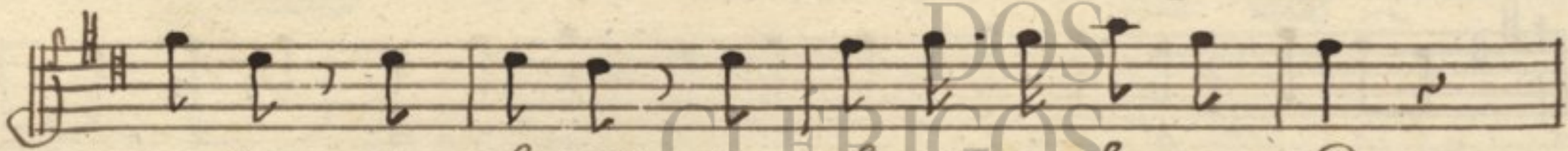


adoremus.

*1<sup>o</sup>* Nocturna Responsorio *1<sup>o</sup>* Peres.



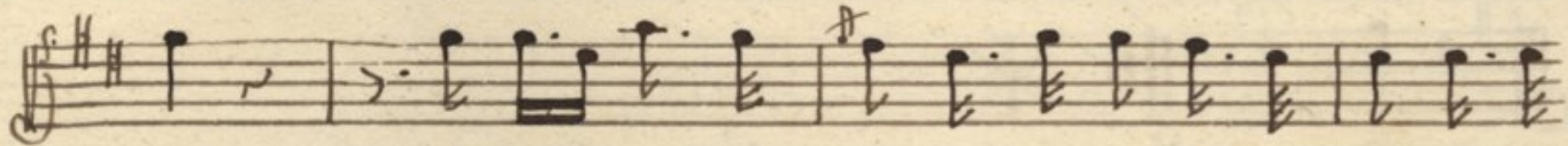
Hodie hodie nobis hodie



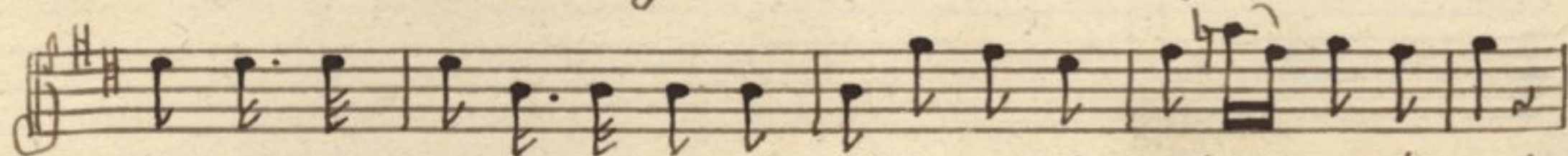
nobis Calorum Calorum Rex



de Virgine nasci dignatus



est de Virgine nasci dignatus



de Virgine nasci dignatus est dignatus est.



ut hominem perditum ad caelestia

Regna ad caelestia Regna revo-ca

ret revo-ca-ret ad caelestia

Regna revo-ca-ret revo-ca-ret. segue

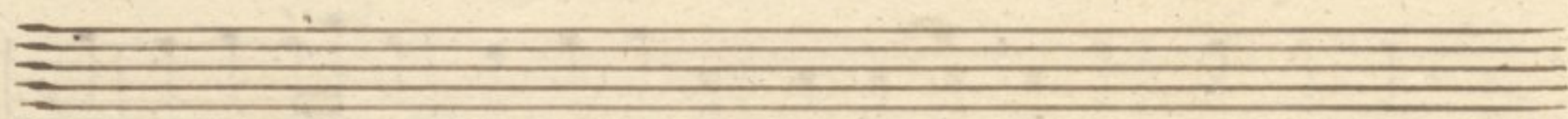
Presto Gaudet exercitus Angelorum

gaudet gaudet gaudet quia salus a-

ter-na humano gene-ri humano gene-ri

appa-ru-it humano gene-ri appa-ru-


it. segue Solo.





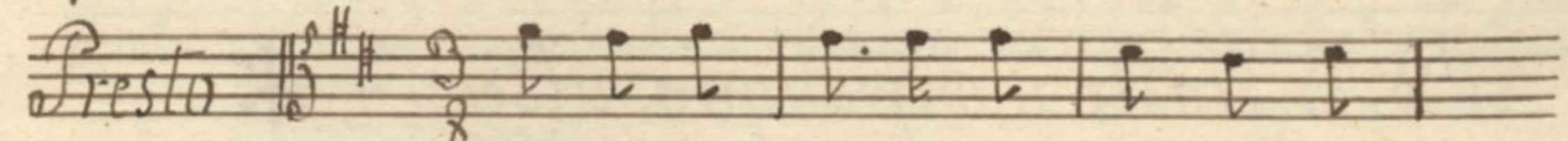
Solo

*Giusto All<sup>o</sup>*



Glori-a glori-a in ex-cel-sij  
in ex-cel-sij De-o in ex-cel-sij - Deo Et in  
ter-ra Et in-ter-ra et in ter-ra pax... ho  
mini-bus bo-na vo-lun-ta  
- - - - - ty in terra pax in ter-ra  
pax in terra pax in ter-ra pax in terra pax. *Segue*

*Presto*



Gaudet ex-erci-tus gaudet ex-  
- er-ci-tus An-ge-lorum quia Sa-lus æ-terna quia  
Sa-lus æ-terna



*Solo*

humano ge-ne-ri ap-pa-ru-it quia salu &

-terna quia salu &-terna quia

sa-lu &-terna quia salu &-terna quia

salu &-terna hu-mano ge-ne-ri humano

ge-ne-ri ap-pa-ru-it humano ge-ne-ri

ap-pa-ru-it.

Gloria Patri a Duo Tacet.

D. C. Hodie nobis Signa a Segno \*

Responsorio 2.

Hodie a Duo Tacet, e dysoij segue tutti



Tutti

*Allegro non tanto* \* ||

Ho-die ho-die

ho-die per totum mundū ho-die ho-die

ho-die per totum mundū per totum mundū per totum

mundū mel-li-flu-i mel-li-flu-i mel-li-flu-i me

li-flui fa-cti sunt ca-li ho-die

ho-die per totum mundū per totum mundū per totum

mundū mel-li-flui mel-li-flu-i mel-li-flu-

i fa-cti fa-cti sunt ca-li mel-li-flui mel-

li-flui mel-li-flu-i facti fa-cti sunt ca-li

fa-cti sunt ca-li.

Segue Solo. *ff*



Solo

*All<sup>o</sup> mod<sup>o</sup>*

Ho-die il-luxit no-bis il-luxit  
no-bis dies re-dem-psi-onij re-dem-psi-  
o-nij nova re-dem-psi-o-nij nova  
re-pa-ra-ti-onij re-pa-ra-ti-o-nij an-  
ti-que fe-li-ci-ta-  
tij a-ter-na fe-li-ci-  
ta-tij a-ter-na  
ho-die il-luxit no-bis dies re-dempsi-o-nij  
nova re-dempsi-o-nij nova re-pa-ra-ti-onij



re pa-rati o-ni-an-ti-qua fe-li-ci-ta-ty a-ter-na fe-li-ci-ta-ty a-ter-na fe-li-ci-ta-ty a-ter-na. D. C. al segno.

RESPONSORIA  
 DOS  
 CLÉRICOS  
 Quem vidistis Duo Facet. e Segue

Pastorella. *All. mod.*

Na-tum na-tum  
 na-tum vi-di-mus na-tum na-tum vi-di-mus  
 na-tum



na -- tū vidi mus -- vi -- dimus na --  
-- -- -- -- -- tum natum vi -- di -- mus  
natum vi -- di mus natum vi -- di mus --  
Et Choros An -- ge -- lo -- rū An -- ge --  
lo -- rū Col laudante, Col laudante, Col laudante, Col laudante  
-- dante, Domi num Et Choros An -- ge -- lo -- rū An -- ge --  
lorū Col laudante, Col laudante, Col laudante, Col laudante  
-- dante, Col laudante, Domi nū vi -- dimus natum natum  
vi -- dimus vidimus Choros An -- ge -- lo -- rum Col -- lau --  
-- dante, Col laudante, Col laudante, Domi num Col laudante



*dante, Do-minum* . . . . .

*Dicite Quoniam Visistij Facet. Segue*

*Pastorella* *Na-tū na-tum natum vi-di-*

*-my natum na-tū na-* . . . . .

*--- tum vi-di-my vi-di-my natum natum*

*natum vi-di-my natum na-tum vi-di-my*

*--- " Et Choros An-ge-lo-rū An-ge-lo-rū An-ge-*

*- lo-rum vi-di-my Choros An-ge-lo-rū An-ge-*

*- lo-rū Colaudante, Do-mi-nū vi-di-my natum natum*

*vi-di-my vi-di-my Choros An-ge-*



lo - rã Collaudantej Collaudantej Co-laudantej Do - - mi

- - num Collaudantej Do - mi - nã Collaudantej Do - - mi -

- - num - - - - - " *Segue*

*Solo*

*Allegro* Glo - ri - a Pa - tri glo - ri - a

Fi - li - o Et - Spi - ri - tu - i San - cto glo - ri - a

glo - - - - - ri - a glo - - - - - ri - a

glo - ri - - a - Pa - tri glo - ri - - a Fi - li - o

Et Spi - ri - tu - i - San - - - cto glo - ri a

Pa - tri glo - ri - a Fi - li - o Et Spi -



ri - tu - i - San - - - - - cto et Spi - ri - tu - i San -

-----cto. *Segue Dirite Pastorey Tacet.*

*Segue Subito Pastorella*

*And.* Na - tum na - tum vi - di - mus

vi - di - mus na - - - - - tum na - tum

natum vi - di - mus natum vi - di - mus natum vi - di -

- - - - - mus *Allo* Et cho - ros An - - ge -

- lo - rum An - ge - lo - rum An - ge - lo - rum collaudantes collau -

- dantes collaudantes Do - mi - num vi - di - mus

Cho - ros Ange - lo - rum An - ge - lo - rum collaudantes Do - mi -



num collaudantey Do-mi-nū collaudantey collau-

dantey Dominū vi-dimuy natum natum vi-dimuy vidimuy

Choros Ange-lorū collau-dantey collau-dantey col-lau-

dantey Dominū collau-dantey collaudantey col-lau-

dantey Dominū - col-lau-dantey collaudantey Domi-

num collaudantey Domi-num - - - - -

2

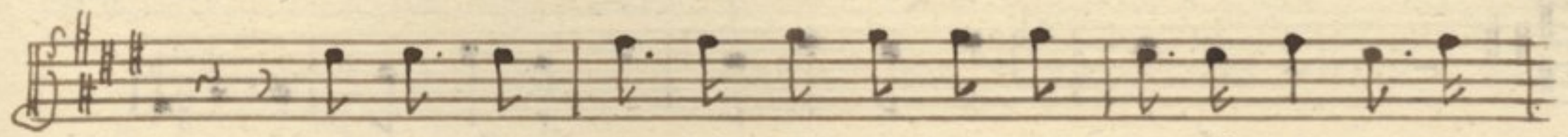
2<sup>o</sup> Nocturno Responsoria 4<sup>o</sup>

3

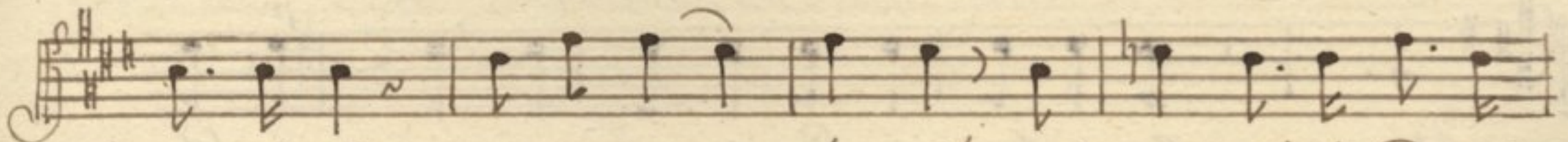
o' Magnū o' magnū mis-te-ri-um

o' magnū o' magnū mis-teri-um

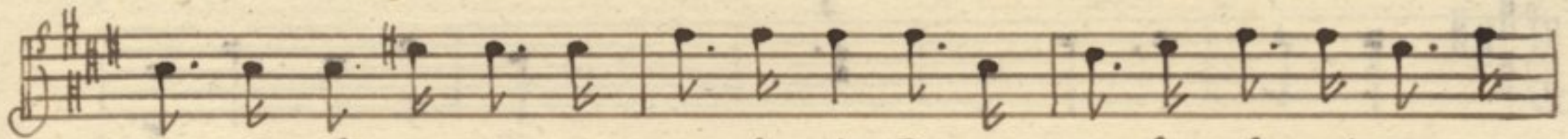




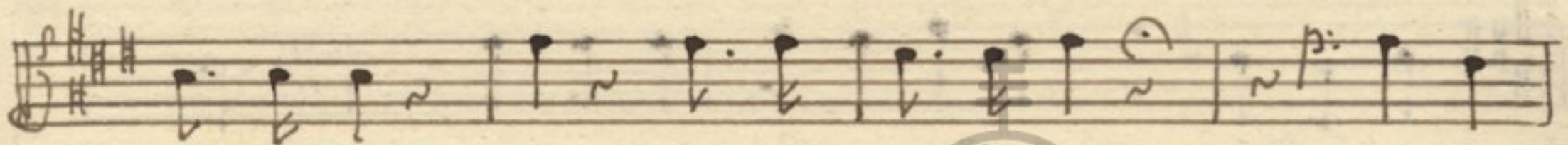
et ad-mi-ra-bi-le et ad mi-ra-bi-le ad mi-



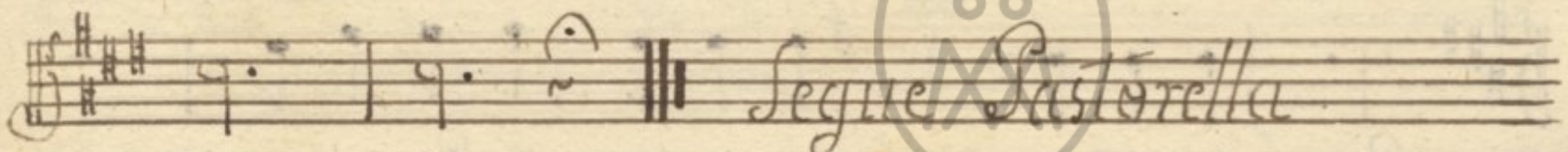
--ra-bi-le Sacra-men-tum O' O' magnū et ad mi-



-ra-bi-le et ad-mi-ra-bi-le ad mi-ra-bi-le et ad mi-

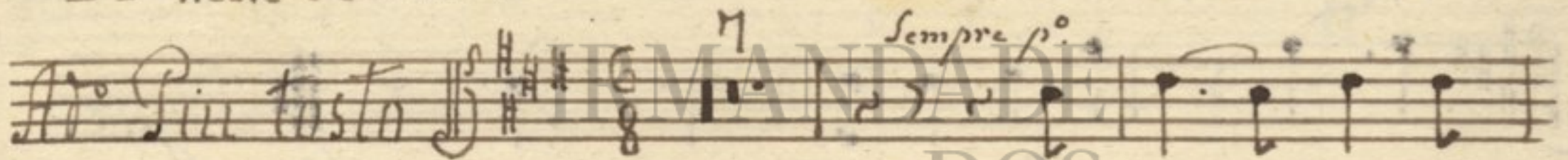


--ra-bi-le O' ad mi-ra-bi-le Sacra-

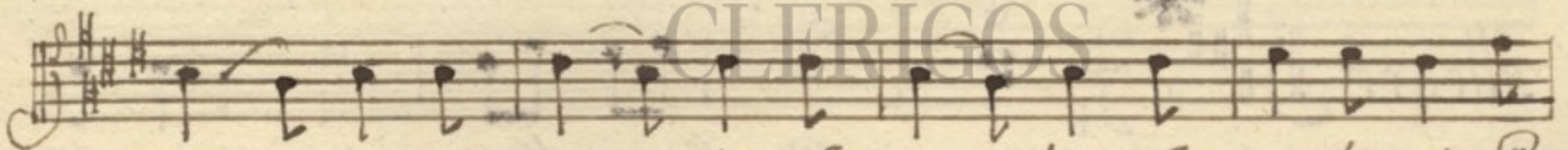


Segue Pastorella

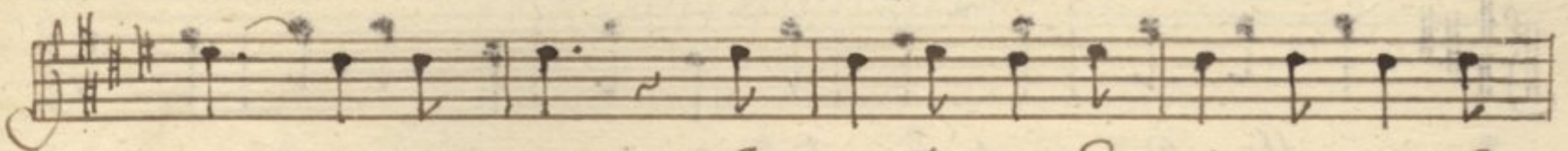
--men-tum.



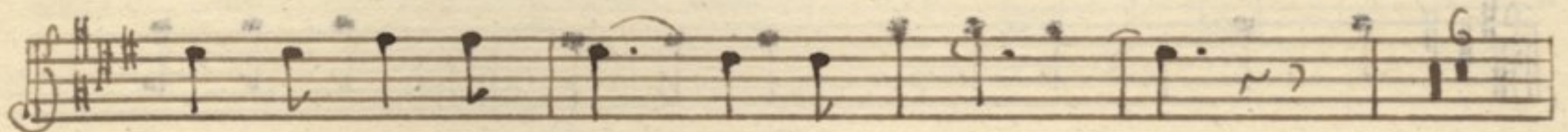
Ja-cen-tem Ja-



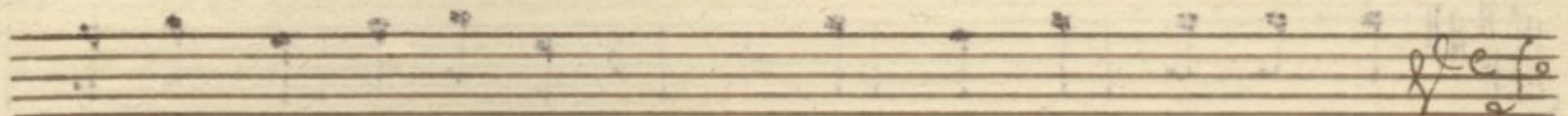
cen-tem Ja-cen-tem Ja cen-tem Ja centem in Pre



-se-pi-o Ja-centem in Pre-se-pi-o Ja



centem in Pre-se-pi-o



Gloria



Ja cen - tem Ja - cen - tem Ja cen - -

- - tem Ja centem in Pre se - pi - o - - - in Pre

- - se - pi - Ja cen - tem Ja

- cen - tem Ja - centem in Pre se - pi - o in

Pre - se pi - o Ja centem in Pre - se - pi -

- - o - - - in Pre se - pi - o - - - Segue

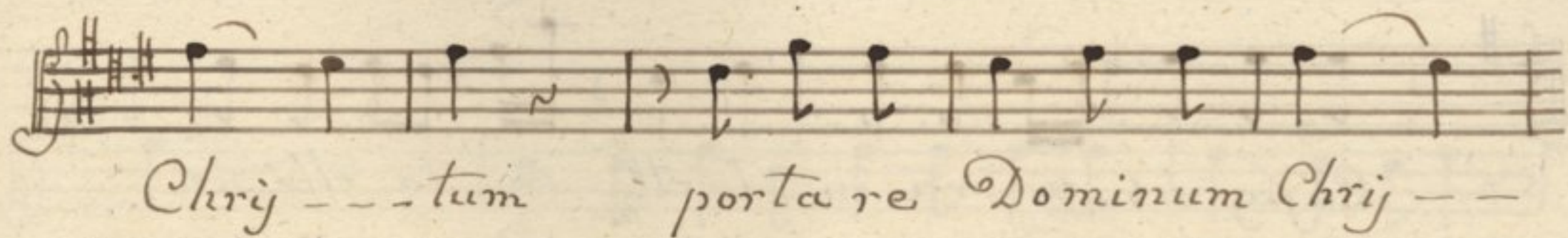
Be - a - tta vir - go Be -

- - a tta Be - at - - ta cu jus vis - cera mera

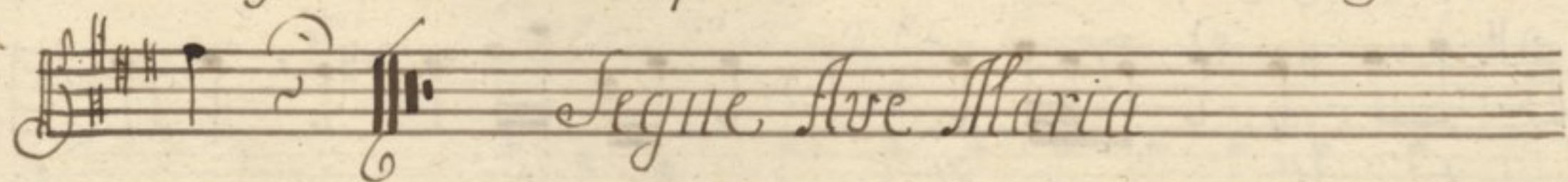
- e - runt portare Domi num por - ta re

Domi num Chri - tum portare Domi num

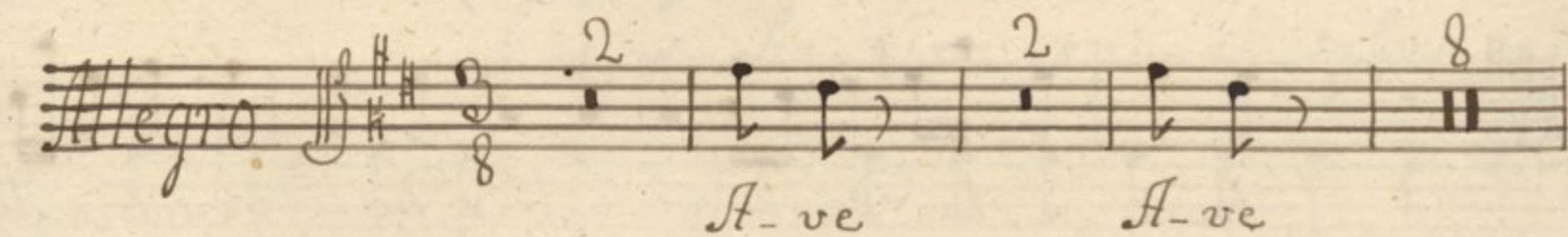




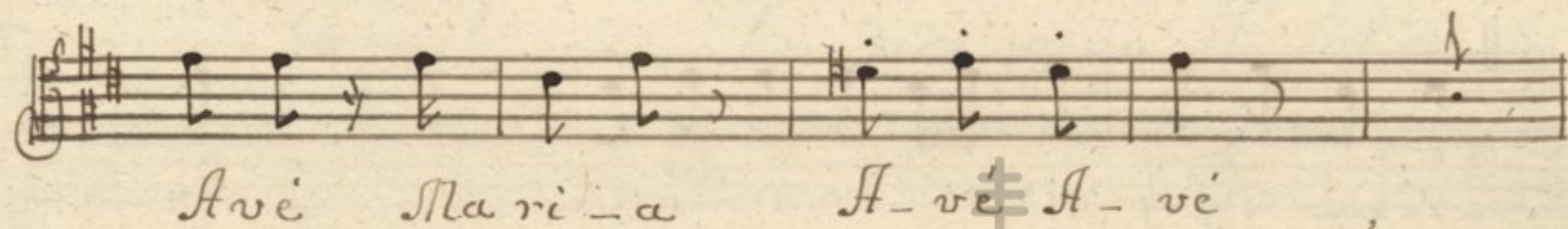
Chri - - - tum portare Dominum Chri - -



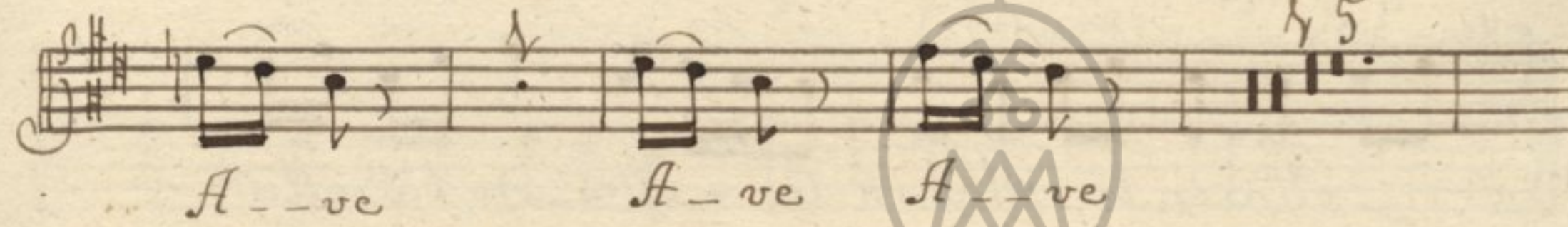
Segue Ave Maria



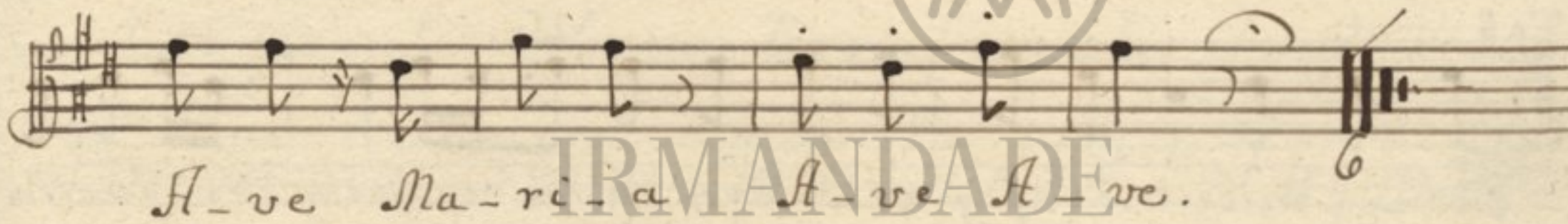
*Allegro* A-ve A-ve



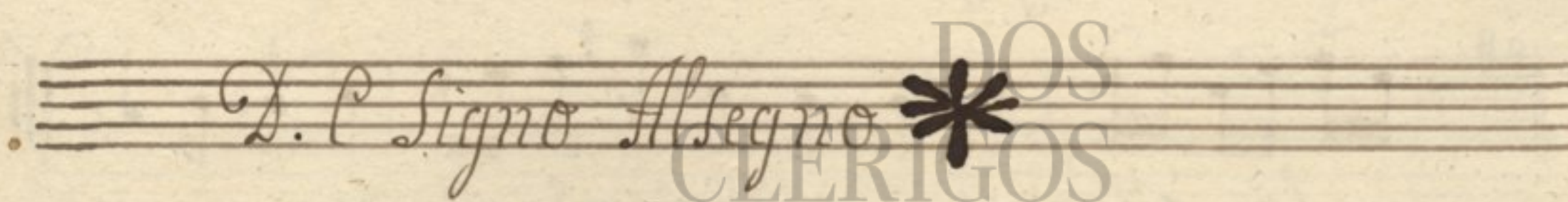
Ave Maria A-ve A-ve



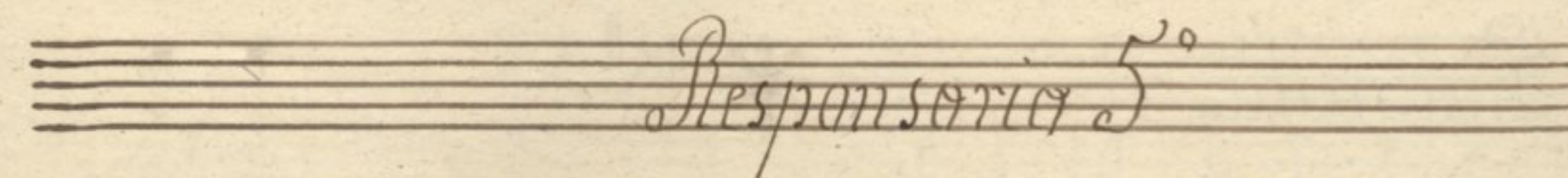
A-ve A-ve A-ve



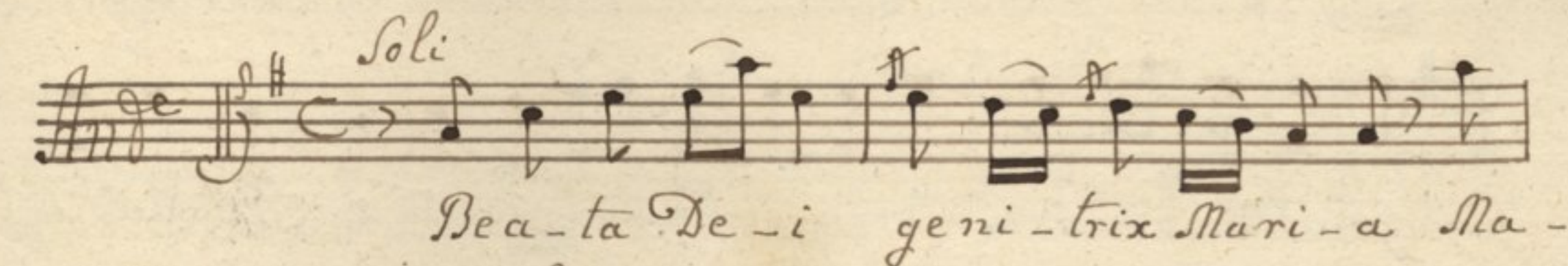
A-ve Ma-ri-a A-ve A-ve.



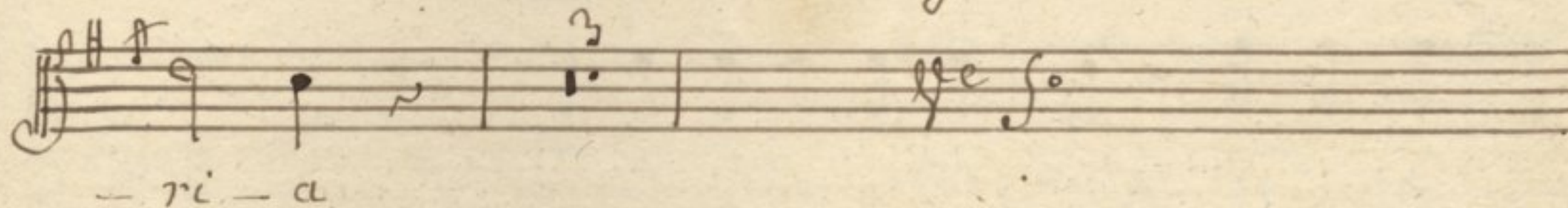
D. C. Signo Allegro



Responsoria 5º



*Ande* *Soli* Bea-ta De-i geni-trix Mari-a Ma-



- ri - a



Cujus vis- ce- ra in- tacta in- ta cta in.

- ta- cta in ta- cta in ta- cta per- - - manent

Bea- - - ta De- i ge- nitrix De- i genitrix Ma-

- ri- a cujus vis- ce- ra in tacta in ta-

- - - cta in ta- cta in ta- cta in ta cta

per- - - manent Cujus vis- ce- ra in ta- - - cta in tacta

in ta- cta per- - - manent in tacta per- - - manent.

Pastorella. Poco All. \* Hodie

genuit Sal- va- torem Salvato- rem Sa- cu- li hodie

genu- it Salva- torem Salvatorem Sa- cu- li - - -



Salvatorē Salvatorem saeculi

hodie hodie genuit Salva-

-torem saeculi - hodie genuit Salva-

-torem Salvatorem Salva-torem saeculi Salva-

-torē saeculi Salva-torem saeculi -

Beata qui Credidi. Solo Tacet. Cal. Segno \*

DOS

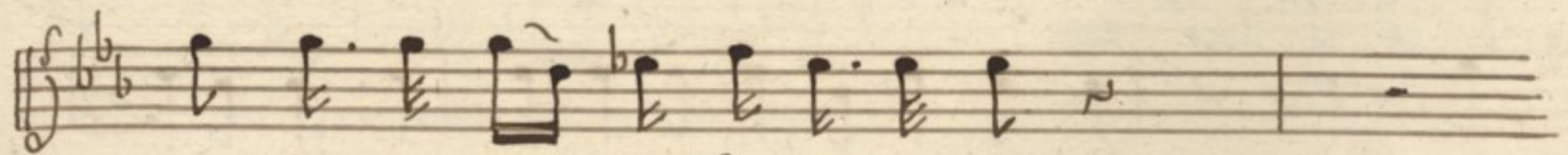
RESPONSORIO

Larghetto Sancta et imma-cu-

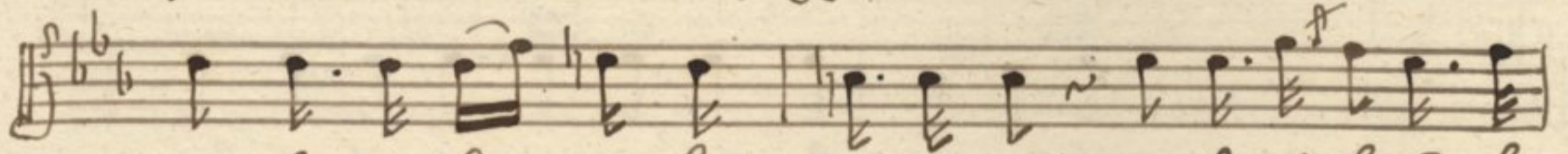
-la-ta immacu-la-ta immacu-la-ta vir-

-gi-nitay

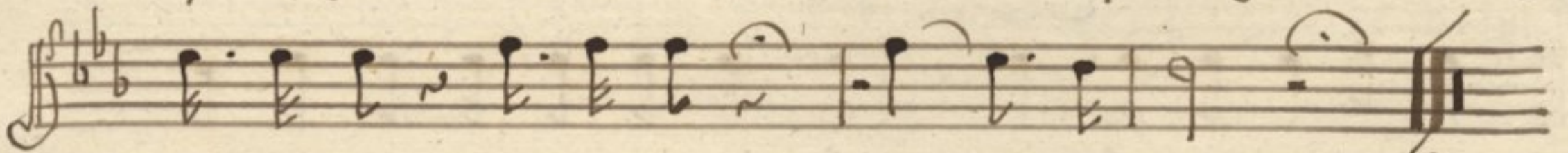




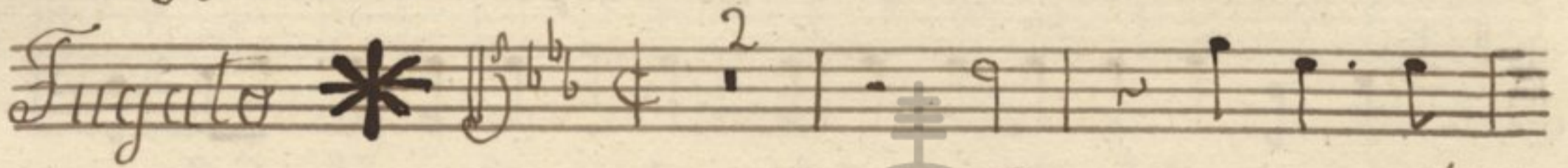
quibus te Lau-dibus effe-ram



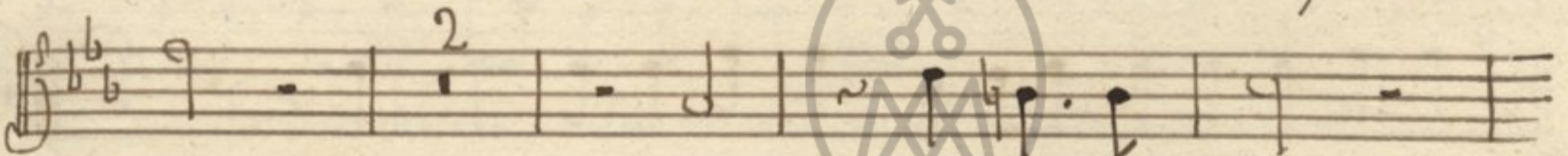
quibus te lau-dibus effe-ram quibus te laudibus



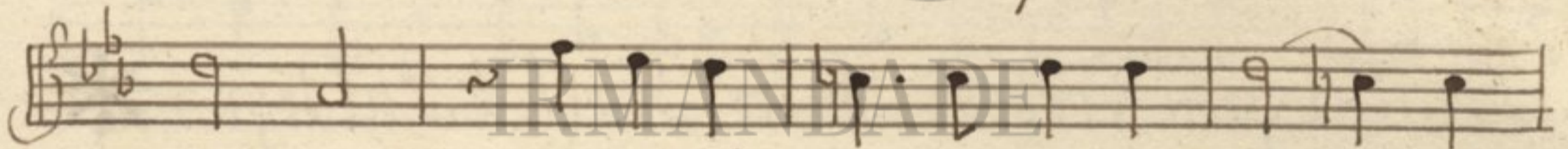
effe-ram nesci-o nes - - ci - o.



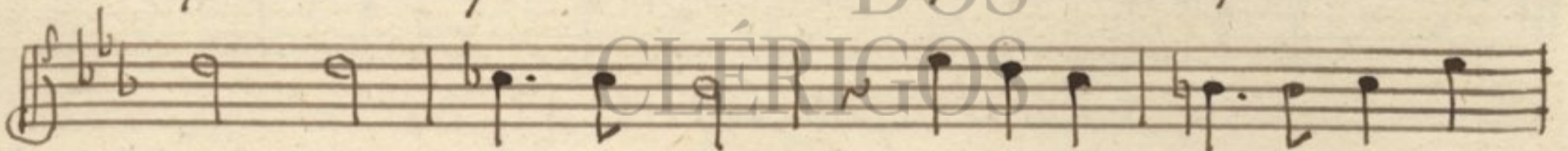
Non non po-te-



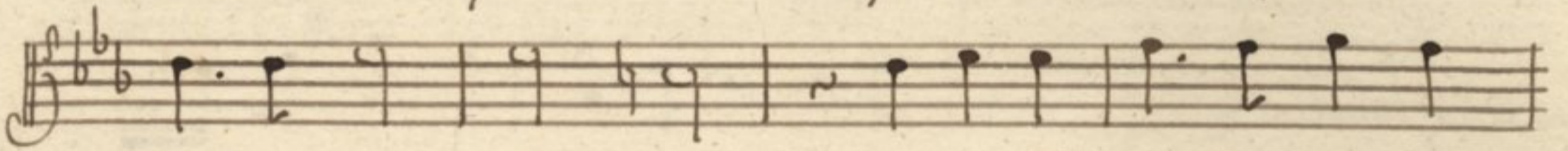
- - rant non non po-te-rant



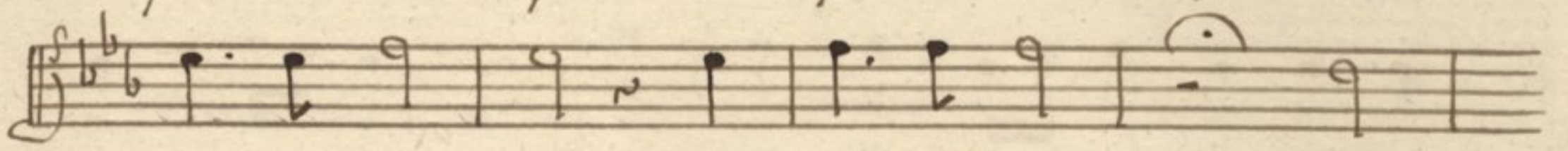
qui-a quem Cali Ca-pere non po - - te -



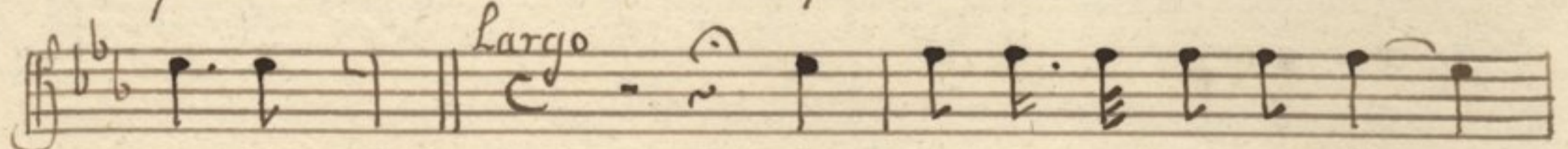
- - rant non po-te-rant quẽ Cali Ca-pere non



po-te-rant qui-a quem Cali Ca-pere non



po-te-rant non non po-te-rant non



po-te-rant tuo gremio Contu li-



*ti* *Benedicta tu Facet D.C. al Segno \**

*Gloria Patri*

*Larghetto* *Et Spi - ri - tu - i -*

*San - cto glori - - a glo - ri - - a*

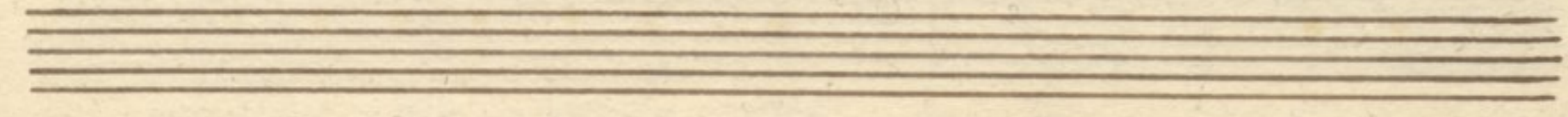
*glo - ri - a glori - a Et Spi ri - tu - i*

*Sancto et Spi - ri tu - i San - -*

*- - cto glo - ri - - a et Spi ri - tu - i*

*Sancto gloria glori - a glori - a gloria glori*

*- - a. D.C. al Segno \**









*Duo. Non molto All*

*Dies Sancti fi -*

catu Sancti fi - ca - - - - - # - - - -

- - - - - " - - - - - " - - - - - tu il

lu - xit nobis di - e Sancti - fica - tu il -

lu - xit il luxit no - - - - - bi

*And<sup>no</sup>*

Veni - te - - - - - gentes ve - - - - - ni - te ve - nite ve -

ni - te et a - - - - - do - - - - - rate

et a - - - - - do - - - - - rate et a do - - - - - ra - - - - -

te Do - - - - - mi num ve - ni te

gentes ve - nite ve - ni - te.



et a -- do -- rate et a -- do -- rate venite

gentes et a -- do -- rate a -- do -- rate

a -- do -- ra -- -- -- " -- -- -- -- -- " -- -- -- -- --

-- -- -- -- -- " -- -- -- -- -- te Do -- -- -- -- -- minum ve --

-- ni -- te ve -- ni -- te et a -- do -- rate a -- do --

-- ra -- te Do -- -- -- -- -- minum a -- do -- rate Do -- -- -- -- -- mi --

-- num a -- do -- rate Do -- -- -- -- -- minum *Segue*

*Pastorella. Larghetto* Qui ho -- di -- e

pro salu -- te mun -- di de

vir -- gi -- ne nas -- ci de vir -- gi -- ne nas -- ci di --



gna --- tu est de Vir gi - ne nasci de

vir - gi - ne nas - ci di gna --- tu

est di gna --- tu est di gna --- tu

est dignatus est dignatus est.

Responsorio 8.

*Pastorella. Larghetto*   
Ver - bũ Ca --- ro

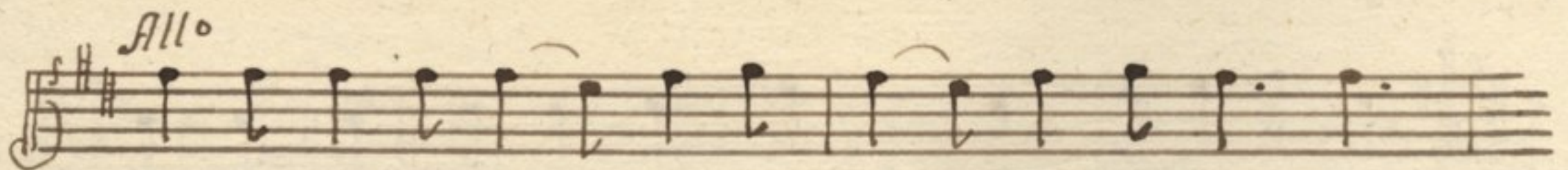
fa --- ctũ est -- et ha --- bitavit et ha --- bi -

ta --- vit et ha --- bi - tavit habi - ta - vit in

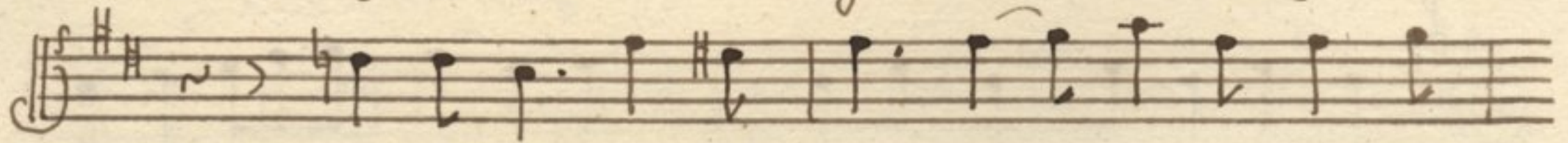
no --- bi et habi ta --- vit in - no - bi Et

*Allo*  
f.





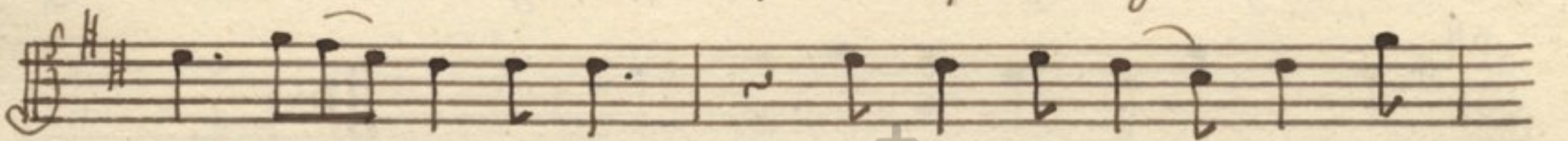
vi - di - mus et vi - - - di - mus glo - ri - am e - jus



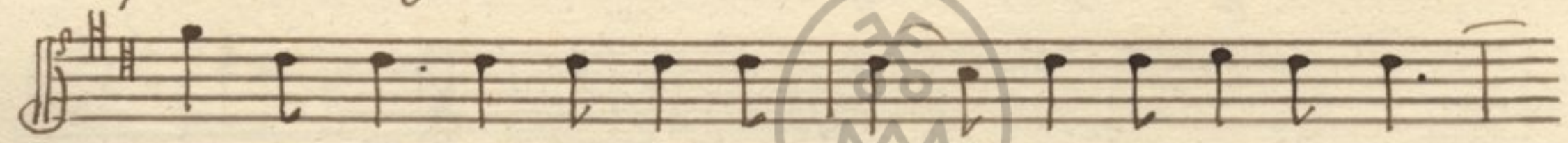
glo - ri - am qua - si u - ni - - - ge - ni - ti a



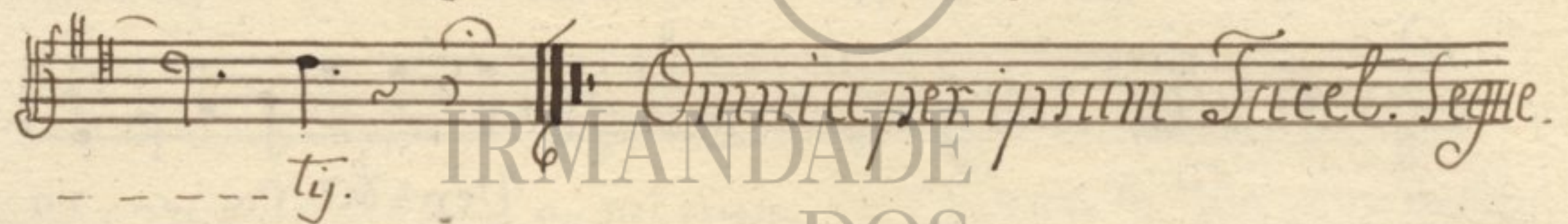
Pa - - - tre a Pa - tre plenu plenū grati - a



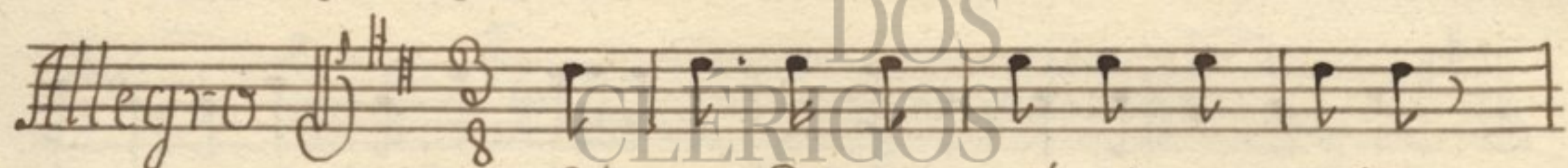
plenum grati - a et ve - ri - ta - ty et



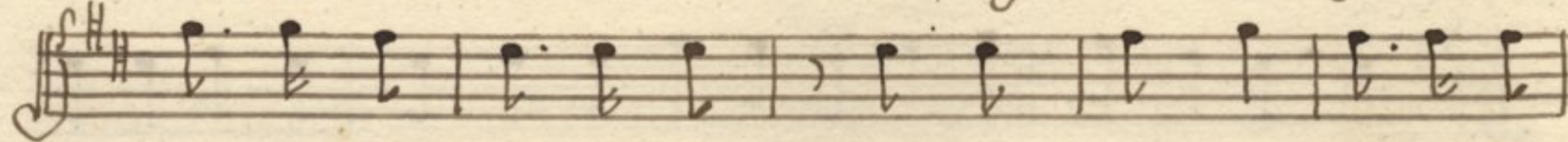
ve - ri - ta - ty et ve - ri - ta - ty et ve - ri - ta -



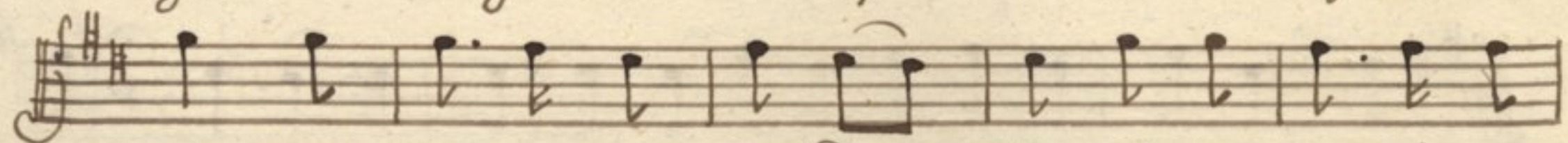
Omnia per ipsum Facet. Segue.  
IRMANDADE DOS CLÉRIGOS



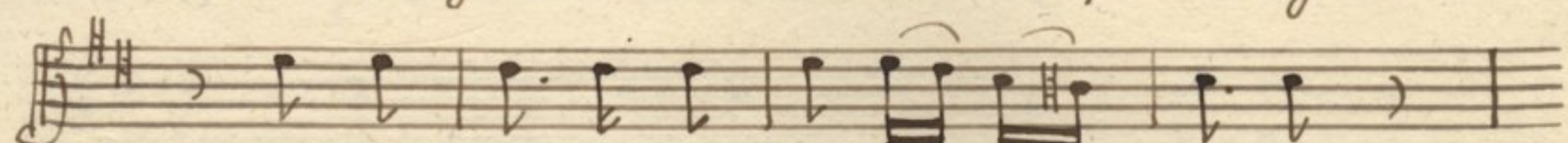
Et vi - di - mus glo - ri - am e - jus



glo - ri - am glo - ri - am qua - si u - ni - ge - ni - ti

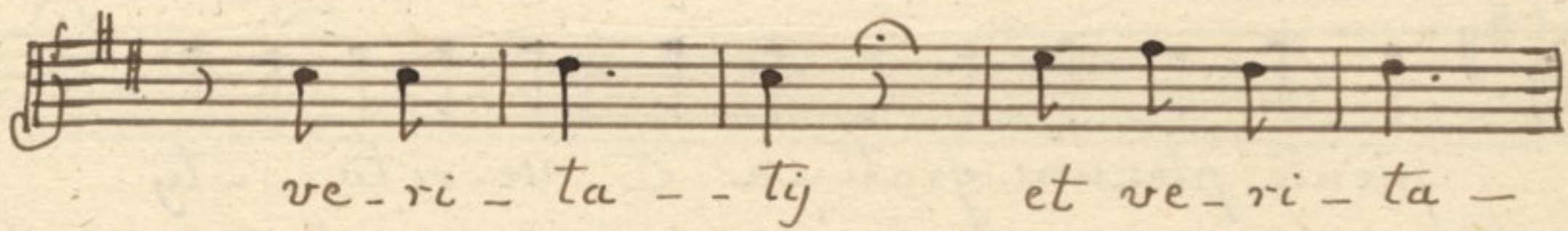


u - ni - ge - ni - ti a Pa - - - tre plenu plenū grati - a

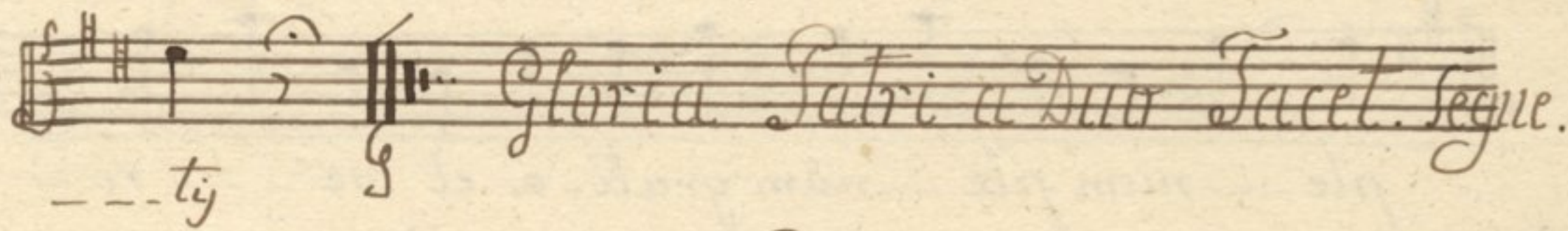


Plenum grati - a et ve - ri - ta - ty

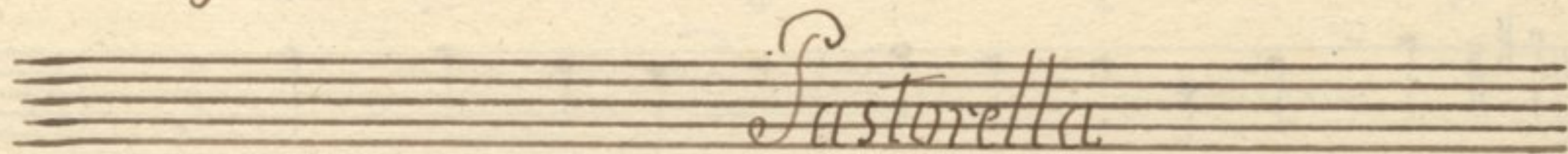




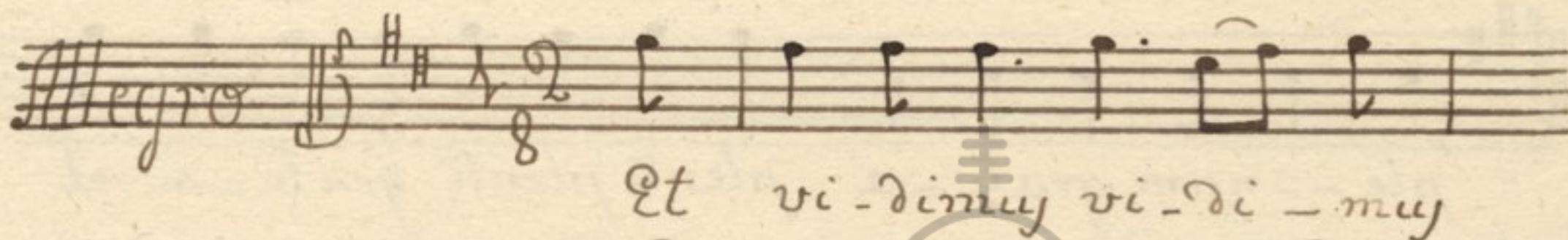
ve-ri - ta - - - tij et ve-ri - ta -



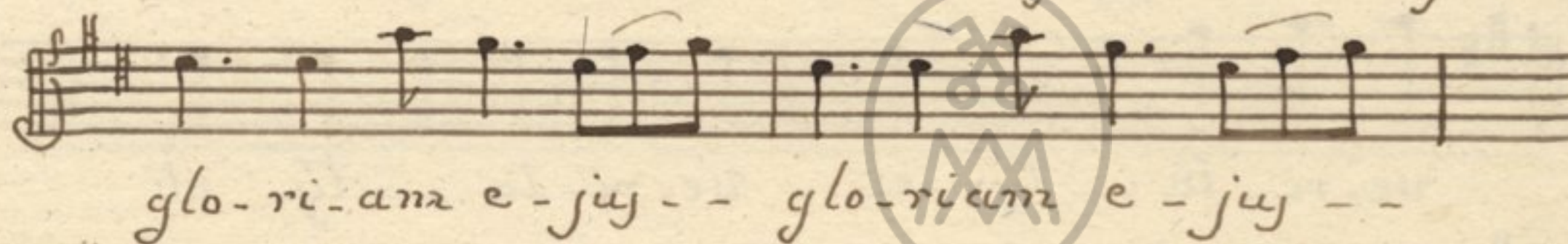
---tij Gloria Patri a Duo Tacet. segue.



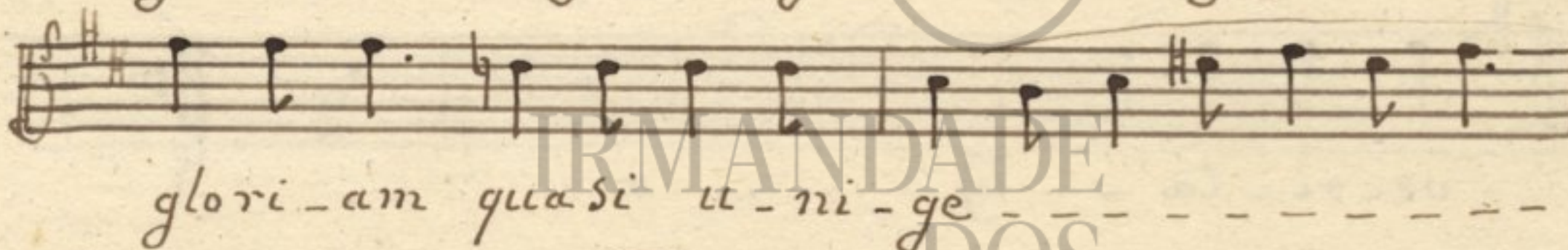
Pastorella



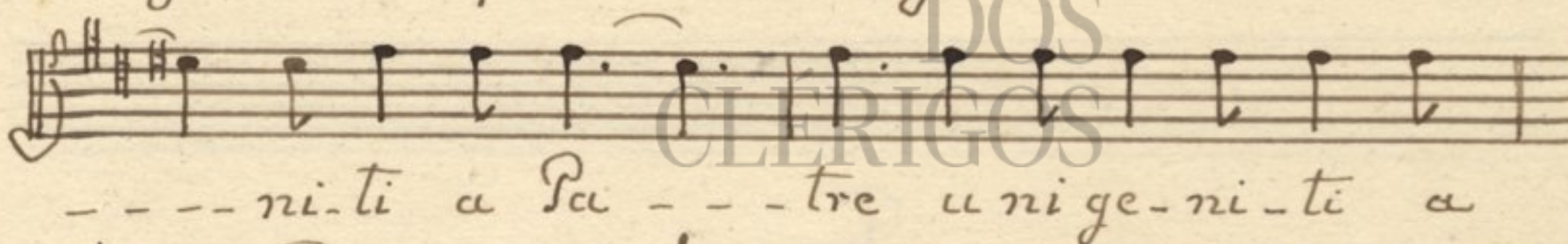
Et vi - di - mus vi - di - mus



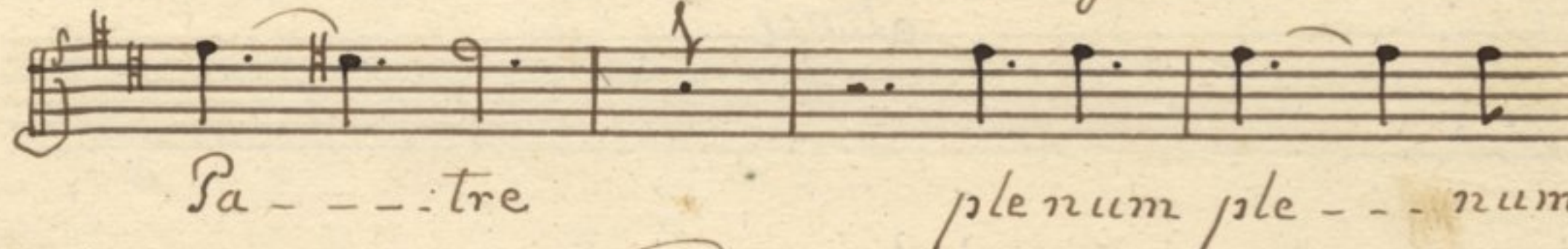
glo - ri - ana e - jus - - glo - ri - ana e - jus - -



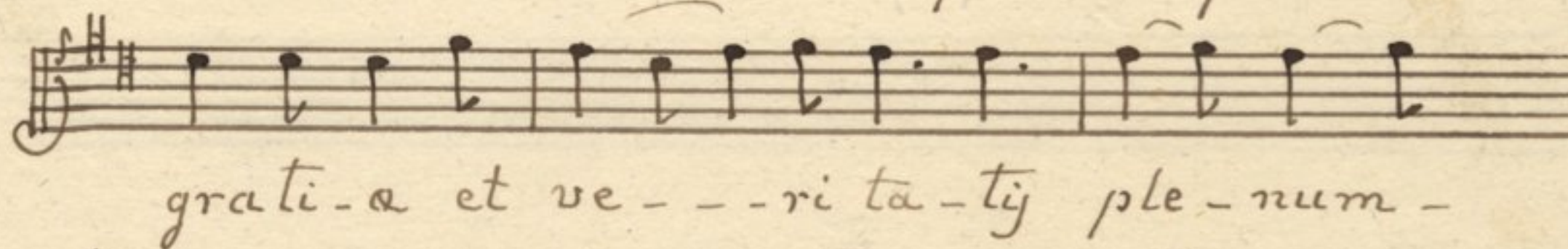
glori - am qua si u - ni - ge - - - - -



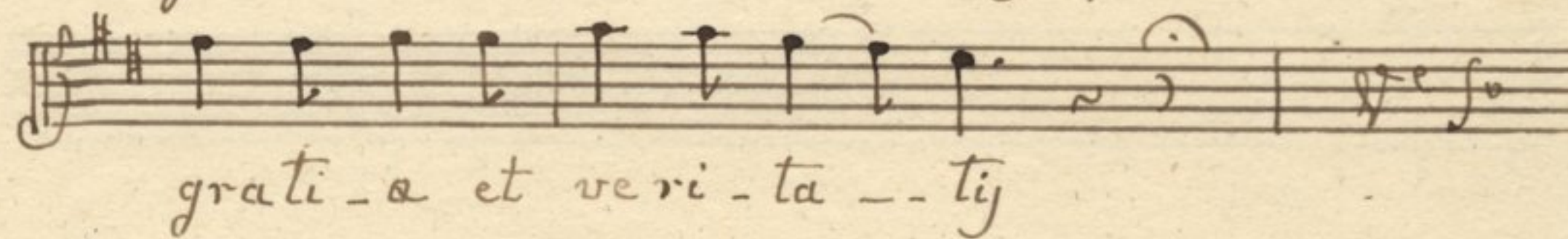
--- ni - ti a Pa - - - tre u ni ge - ni - ti a



Pa - - - tre ple num ple - - - num

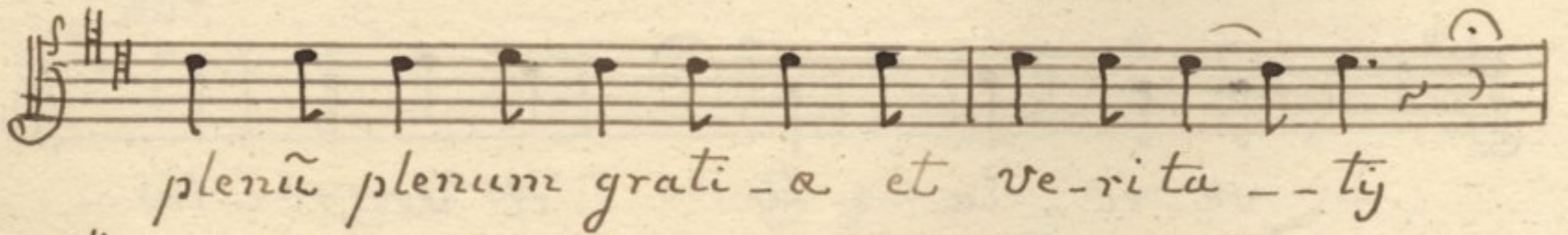


grati - a et ve - - - ri ta - tij ple - num -

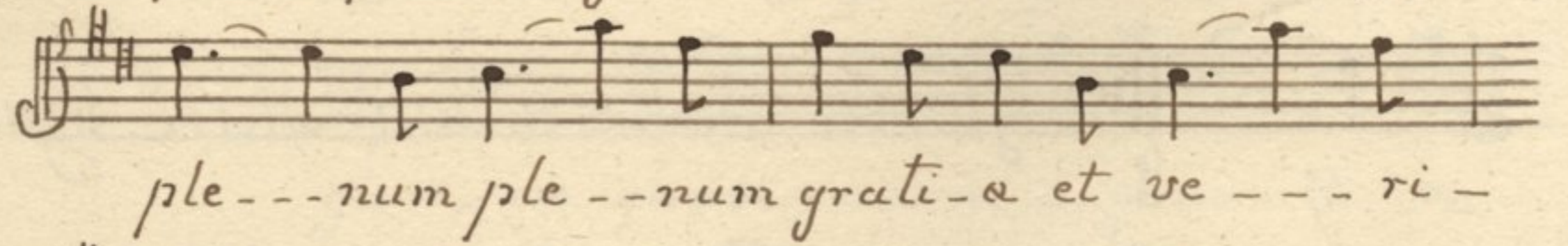


grati - a et ve ri - ta - - - tij

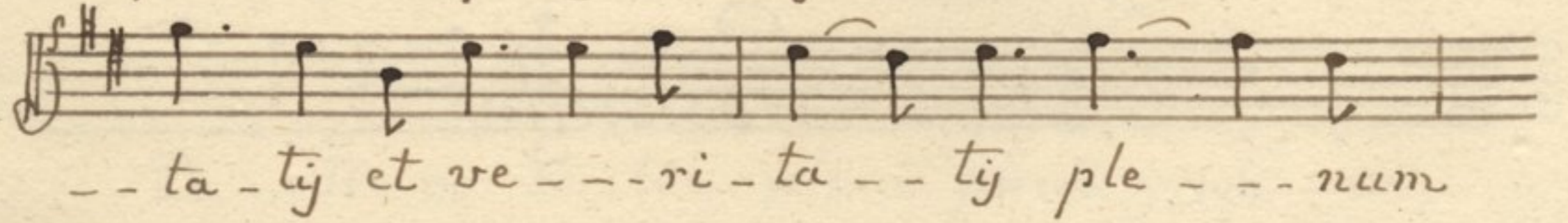




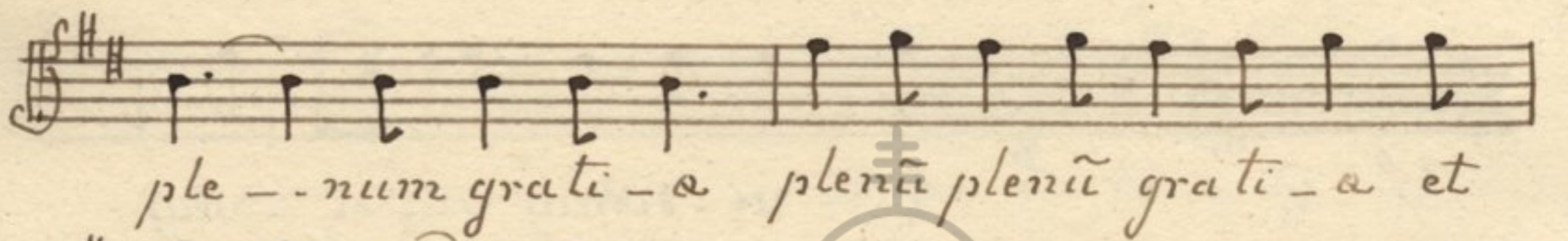
plenũ plenum grati-a et ve-ri-ta --tij



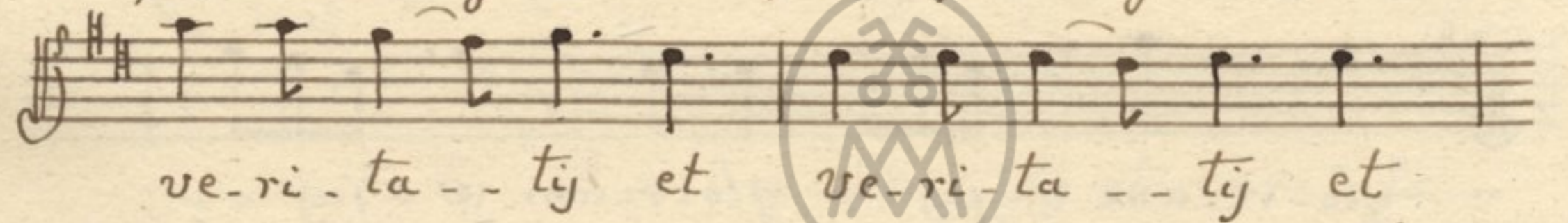
ple --- num ple --- num grati-a et ve --- ri -



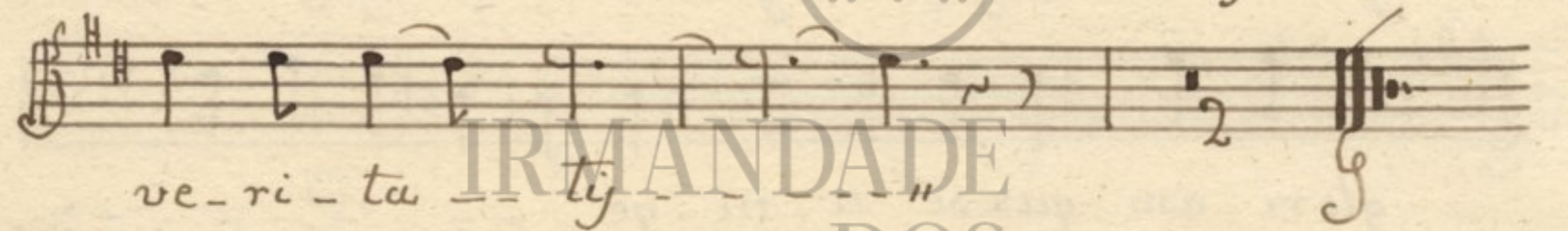
--ta -tij et ve --- ri -ta --tij ple --- num



ple --- num grati-a plenã plenũ grati-a et



ve-ri -ta --tij et ve-ri-ta --tij et



ve-ri -ta --tij

IRMANDADE  
DOS  
CLÉRIGOS

Finis





IRMANDADE  
DOS  
CLÉRIGOS





IRMANDADE  
DOS  
CLÉRIGOS





IRMANDADE  
DOS  
CLÉRIGOS





IRMANDADE  
DOS  
CLÉRIGOS