

Atto

Matinas da Maternidade de N. Sra.^a

a 4 Vozes e Org.

Dedicadas

AO Illmo e Rmo Sr. Ant. Mor.^a

Conigo da Sta. Sé Primaz de Braga

por

Antonio da S. Leite
IRMANDADE
Mestre da Capella da Sta. Sé
do DOS
Porto
CLÉRIGOS

1811

Alto

Invitatorio

Adagio $\frac{2}{4}$ $\frac{5}{4}$ 1

Ma ter ni ta tem Ma ter ni

ta tem be a ta Ma ri a vir gi,

5

nis ce le bre mus ce le bre mus

7

Christum e - - jus e jus Fi li um

a do re - mus Do - mi num Al - - le lu

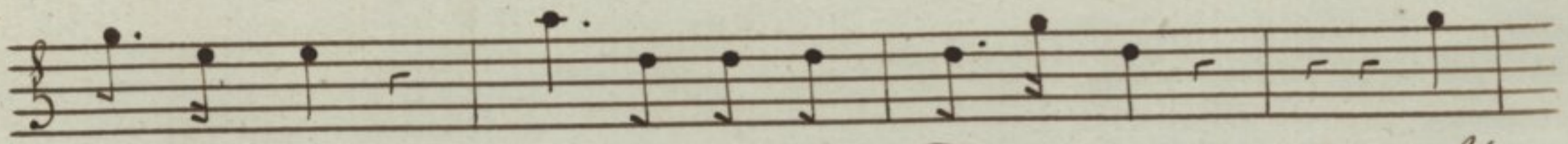
1a

Allegretto $\frac{3}{4}$ $\frac{5}{4}$ 1

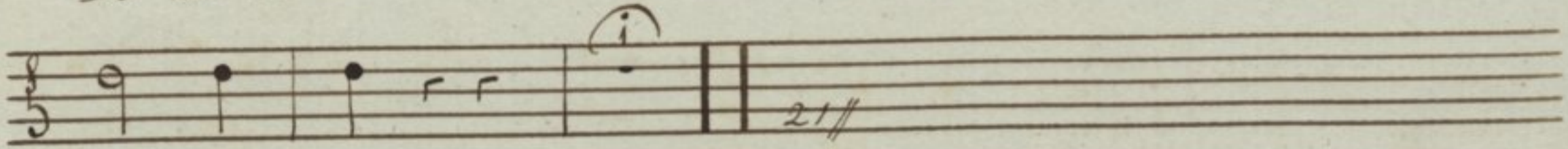
Ma ter ni ta tem be

a ta Ma ri a Vir gi nis ce le bre - - mus

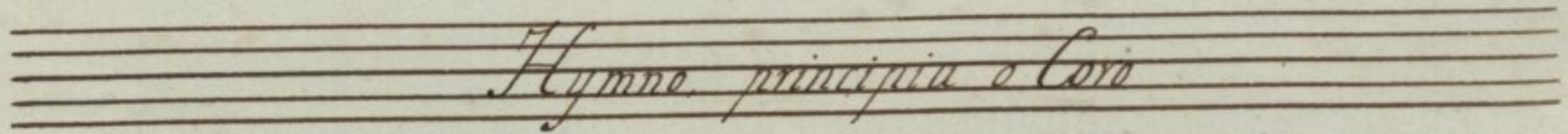
Christum e jus Fi li um a do re mus



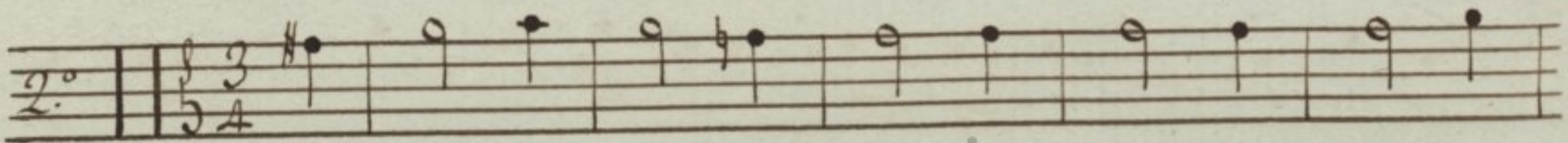
Do mi num a do re mus Do mi num Al



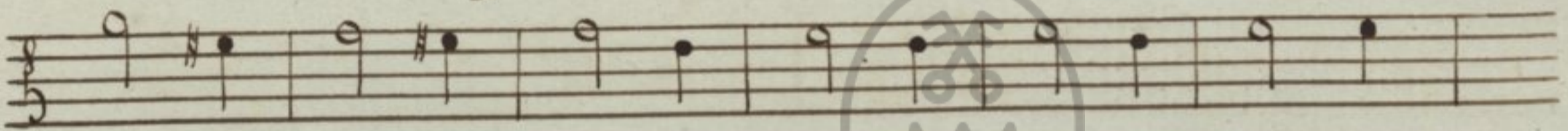
le lu ia



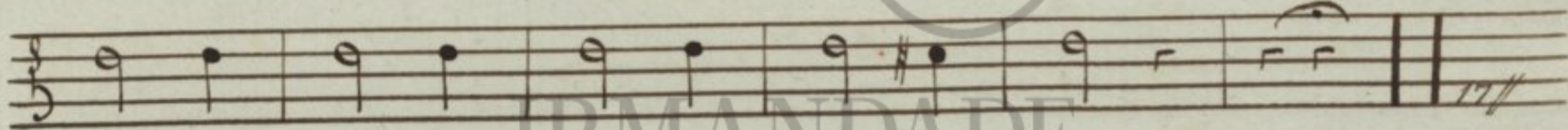
Hymno principiu o Coro



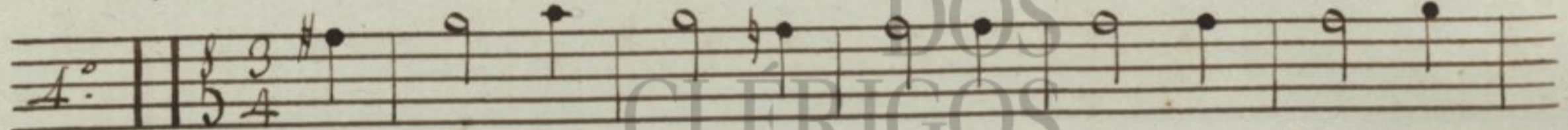
Hoc vir go no bis e di dit non tra sa



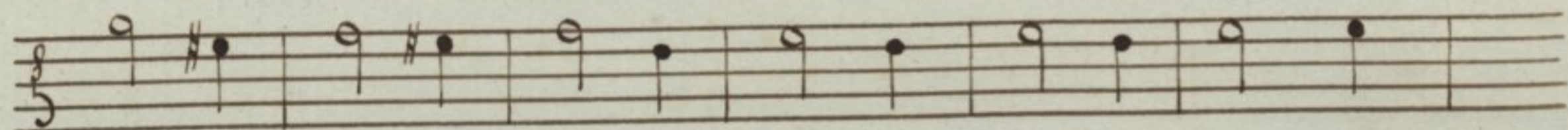
lu tis Aus pi cem qui non re de mit San qui



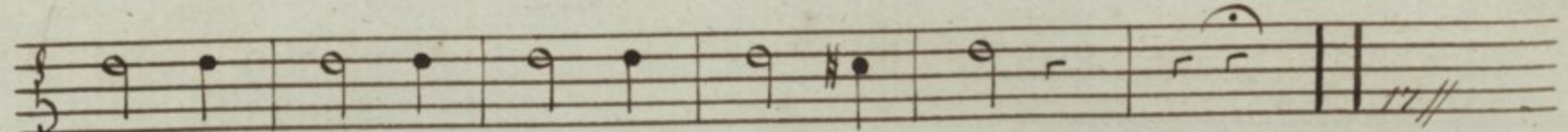
ne pa nas cru cem que per tu lit



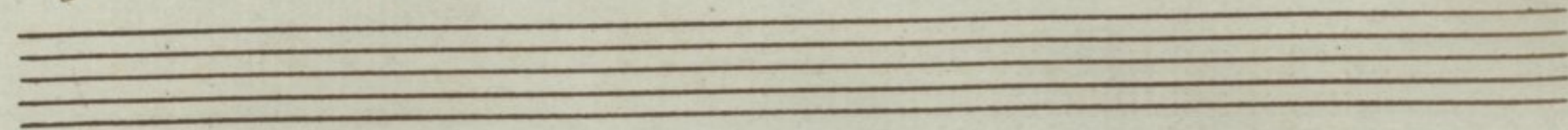
Vo ces Pa ren tis ex ci pit vo tis que



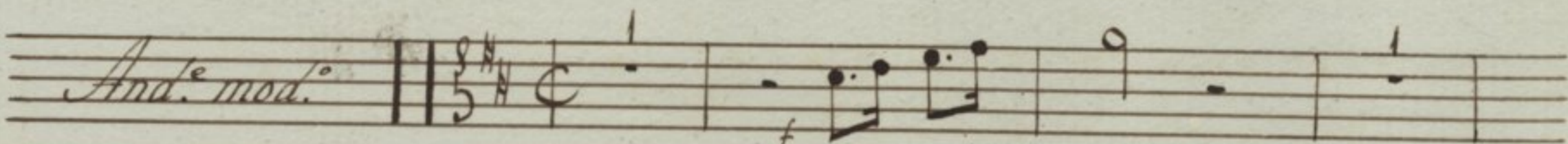
Na tus an nu it hanc quis que sem per di li



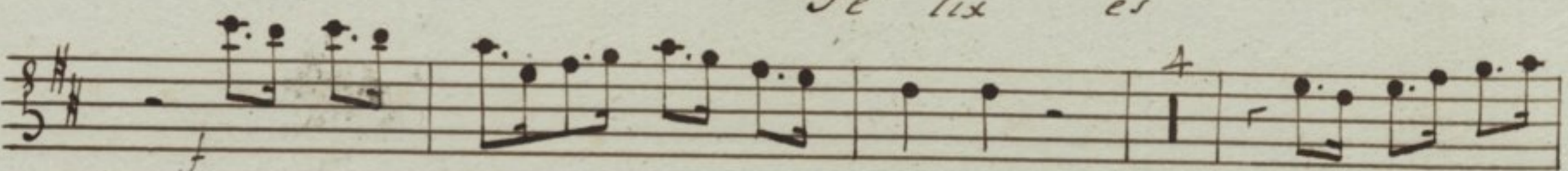
gat re bus quem ar ctis in vo cet.



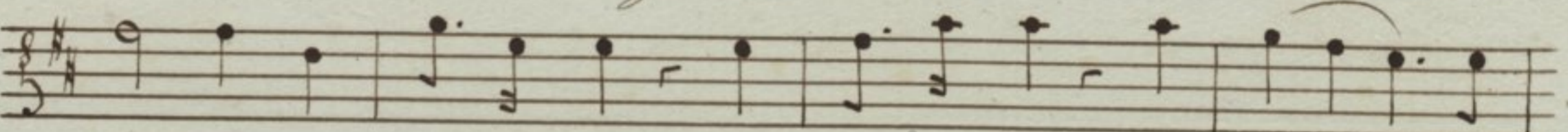
1.º Noturno Responssorio 1.º

And.º mod.º 

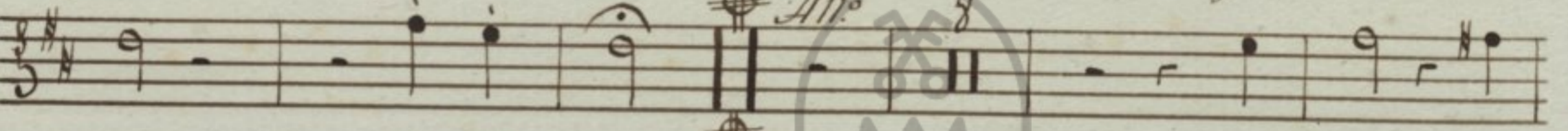
Felix es



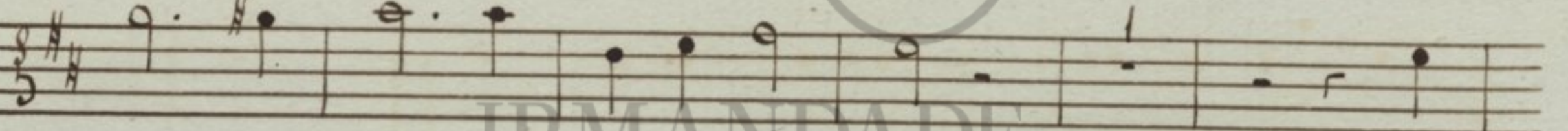
Sacra vir - go Ma - ri - a et omni



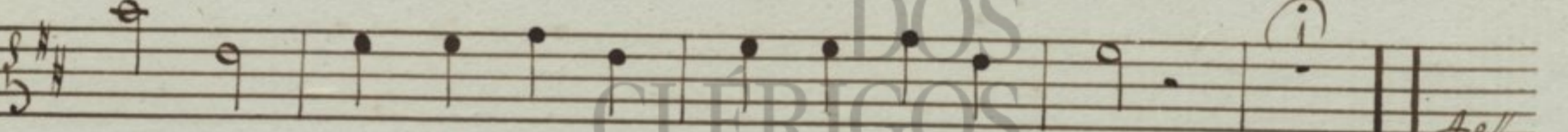
lau - de di - gni - ci - ma - di - gni - ci - ma - di - gnis - - - si



ma felix es per quem sal



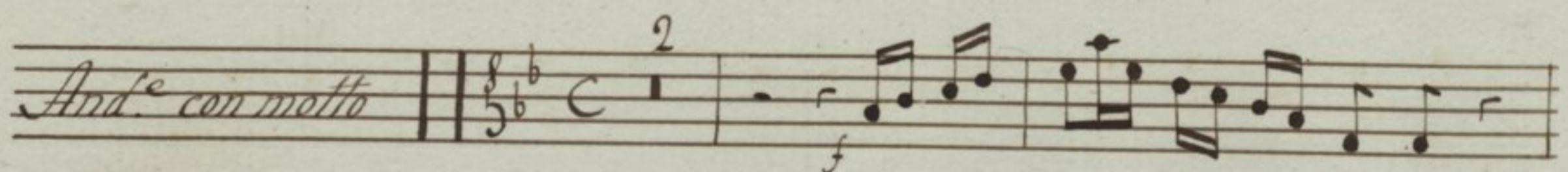
va - ti et re - dempti - su - mus Al



le - lu - ia Al - le - lui - a Al - le - lu - ia

V.º Tacet, Al Segno

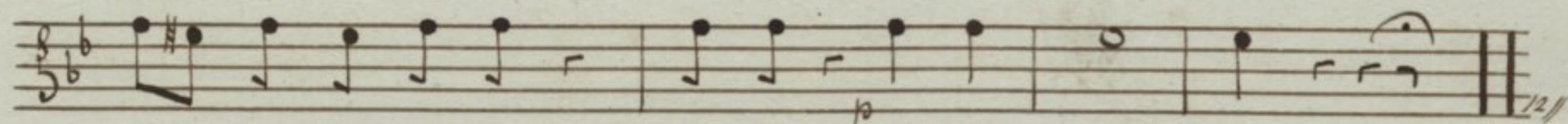
Responssorio 2.º

And.º con motto 

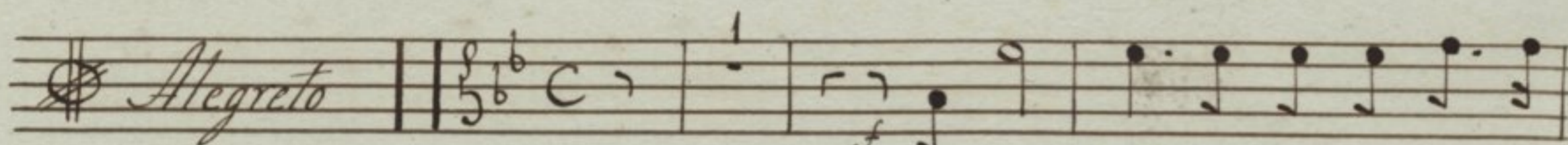
Si - ne ta - ctu pu - do - ris



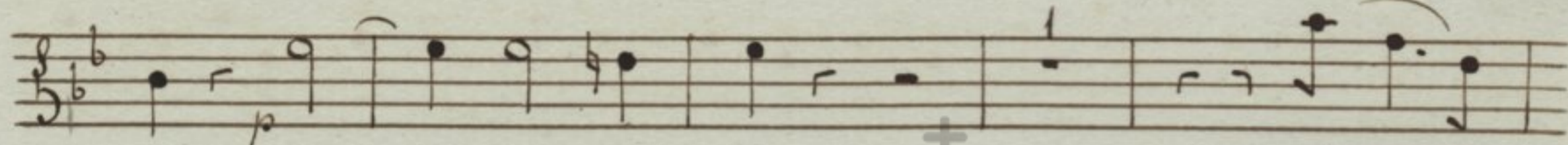
f in ven ta es Mater Sal va to ris in



ven ta es Mater Mater Sal va to ris



f in tu o se clausit vis ce



ra fa ctus ho mo Al



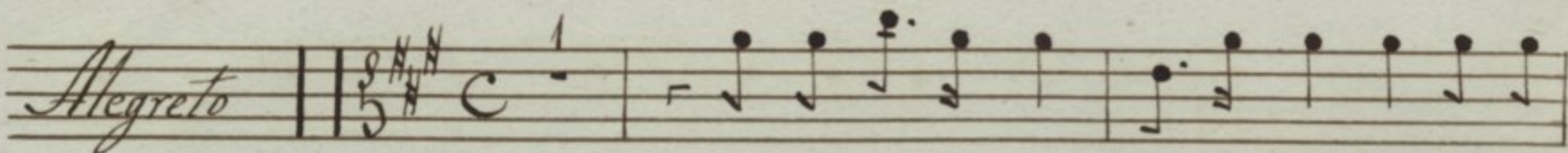
le lu ia Al le lu



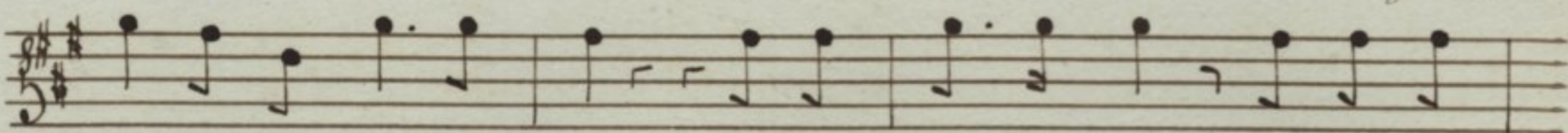
ia Al le lu ia Al le lu ia

f Tacet. *Al Segno* $\text{\$}$

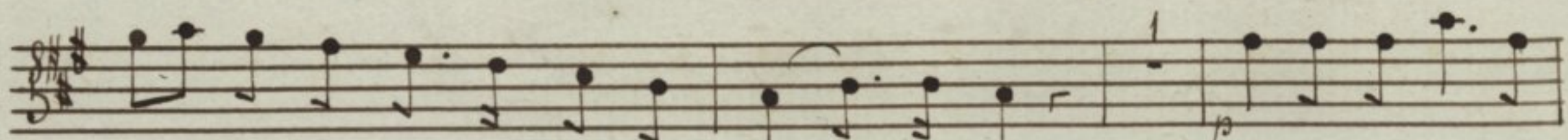
Responsorio 3.º



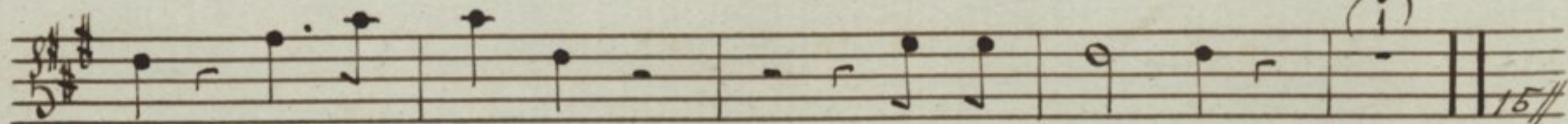
f Mul ta fi li a fi li a con gre ga



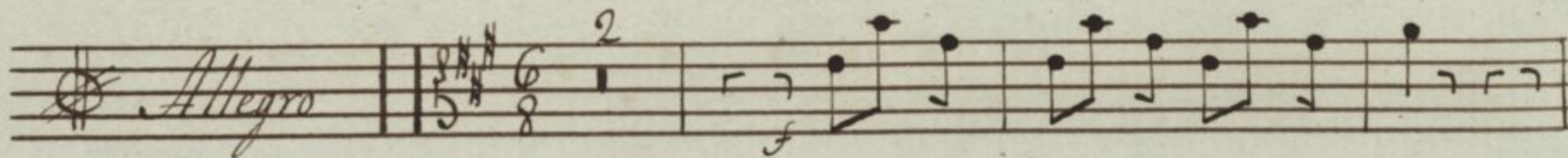
ve runt di vi ti as mul ta fi li a con gre ga



ve-runt di vi ti as di vi - ti as tu super gressa

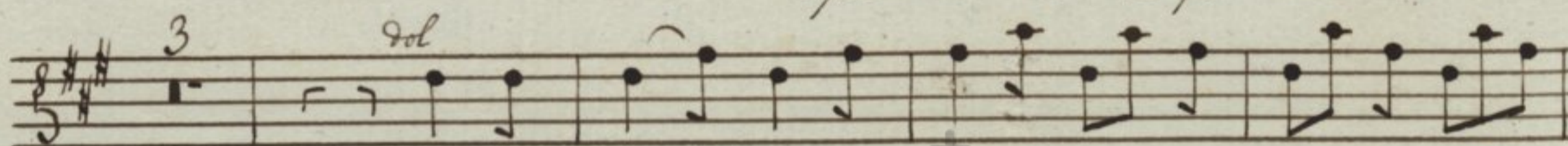


es u ni ver sas u ni ver sas

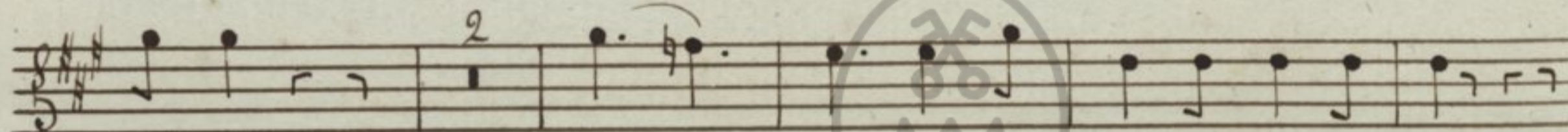


Allegro

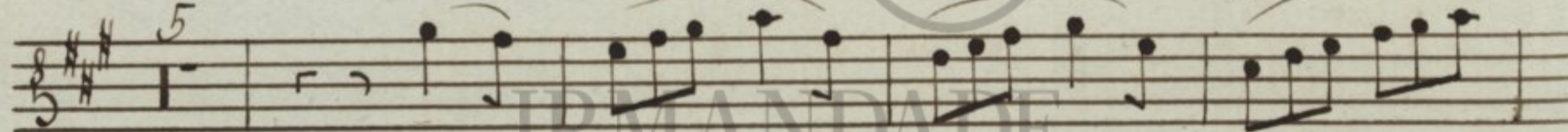
Spe ci o sa fa - cta es



et su a - vis su a vis in de li ci is -



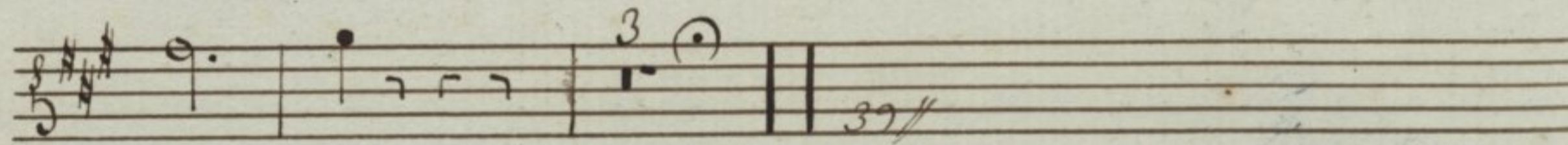
tu is San - cta Sancta Dei ge ni tris



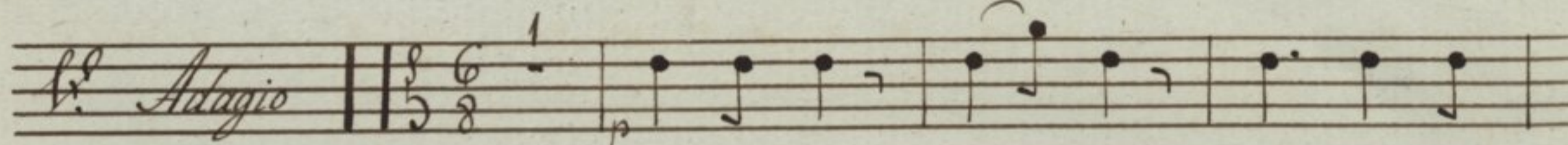
Al - - - - -



le lu ia Al le lu ia Al le



lu ia

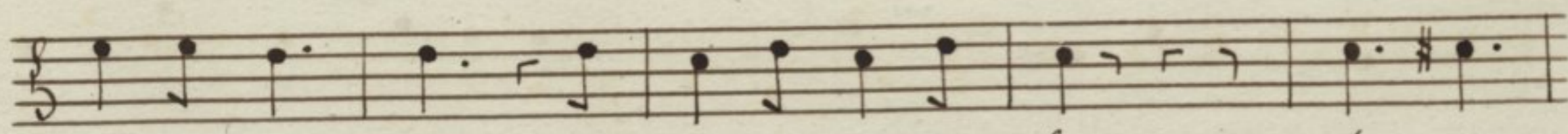


Adagio

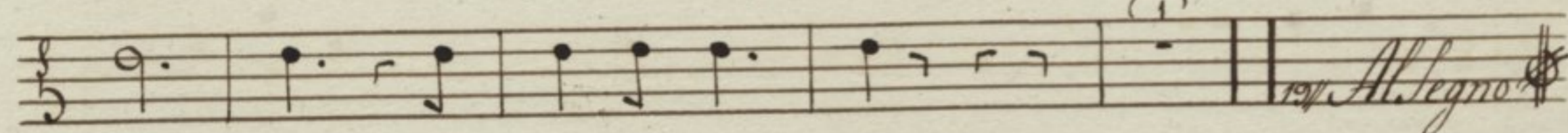
Sen ti ant om - nes tu um ju



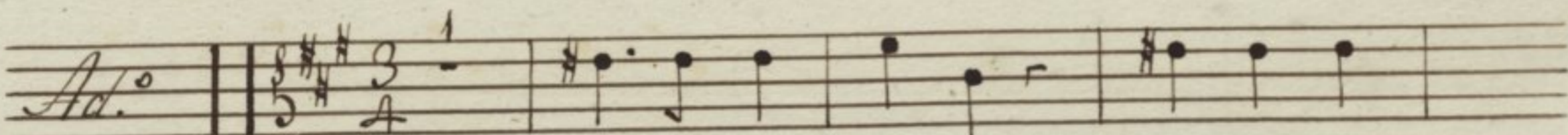
va - men qui cum que ce le brant tu am San ctam Ma



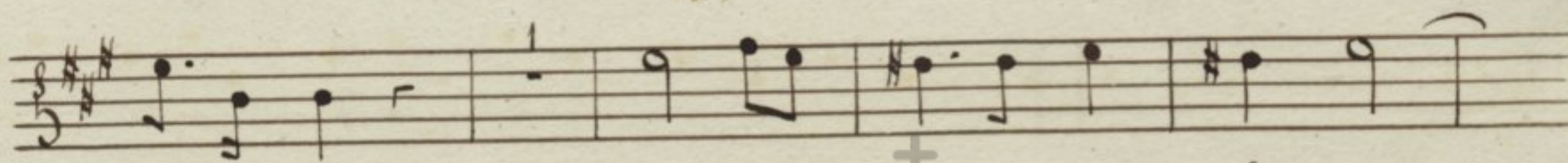
ter ni ta tem qui cum que ce le brant tu am



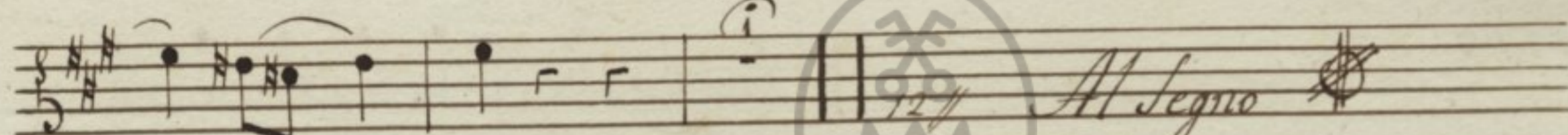
San ctam Ma ter ni ta tem



Glo ri a Pa tri Pa tri et



Fi li o et Spi - ri tu i San - -

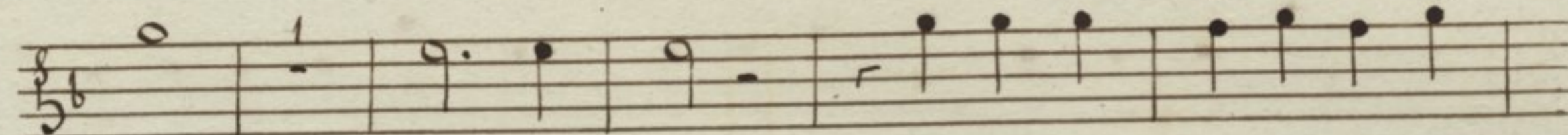


- - - - - cto

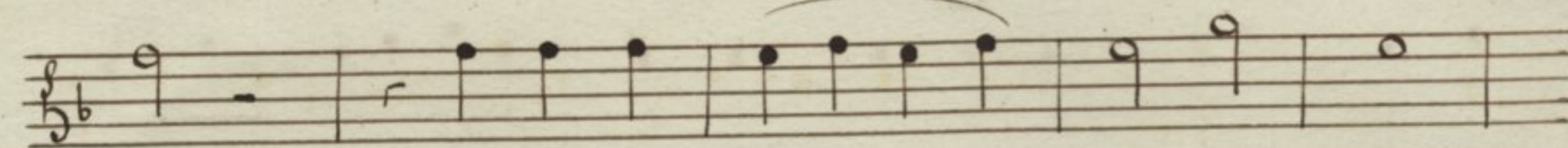
2.º Noturno Responsorio A.º



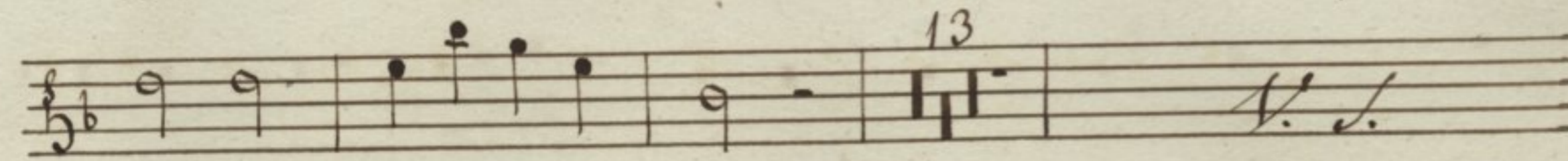
All.º Cu - jus Do mi



nus Do mi nus hu mi li ta - - -

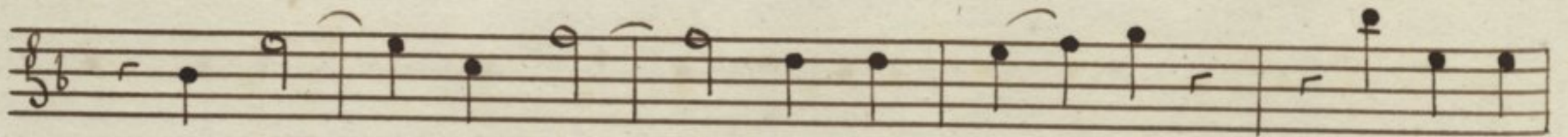


tem hu mi li ta - - - tem res pe

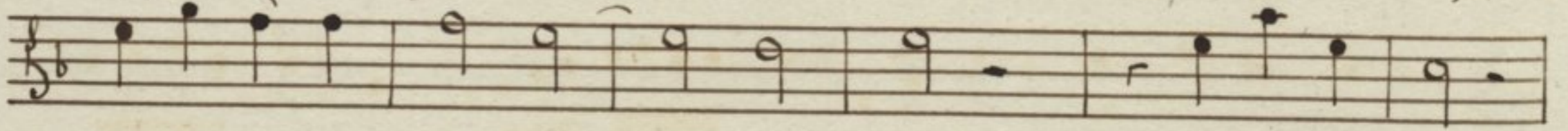


xit res pe - - - - xit

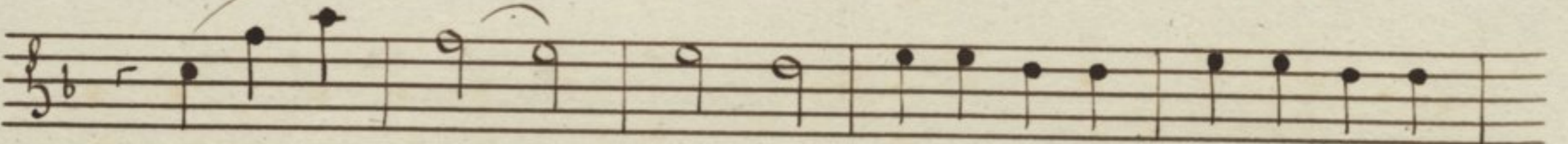




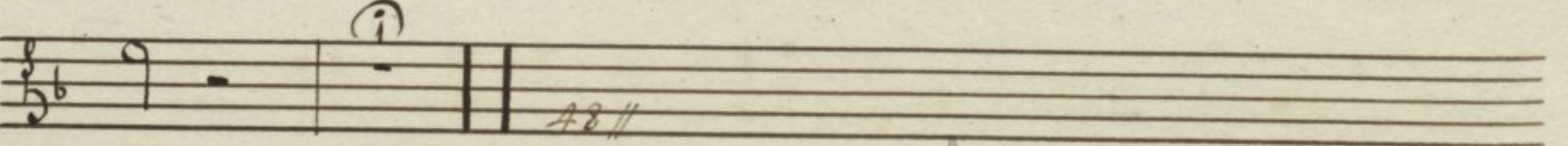
quo An - ge lo - nun ti an - te con ce pit



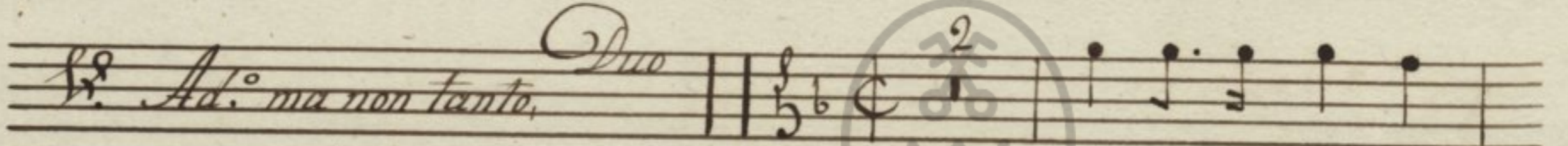
Sal - - va to rem - mun di Alle lu ia



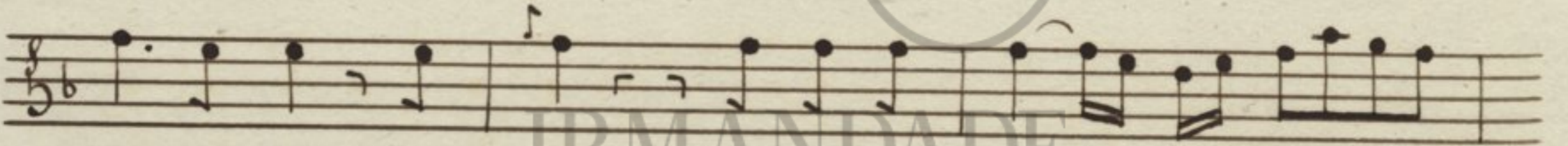
Al - - - - le lu ia Alle lu ia Alle lu



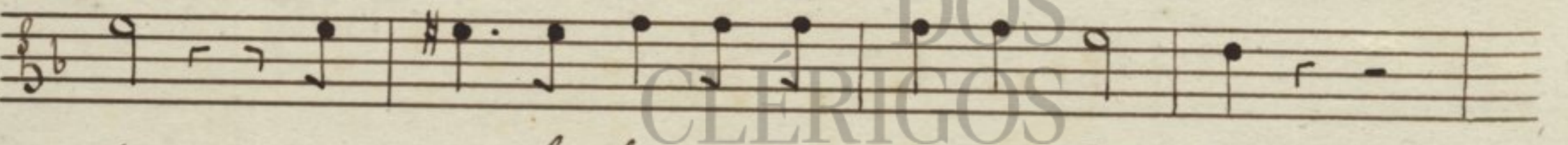
ia



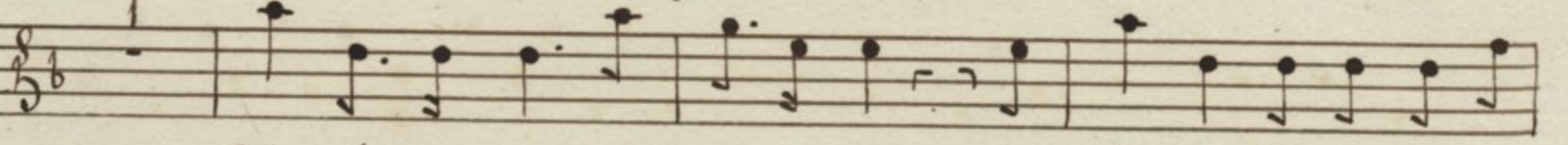
Christu ca na mus



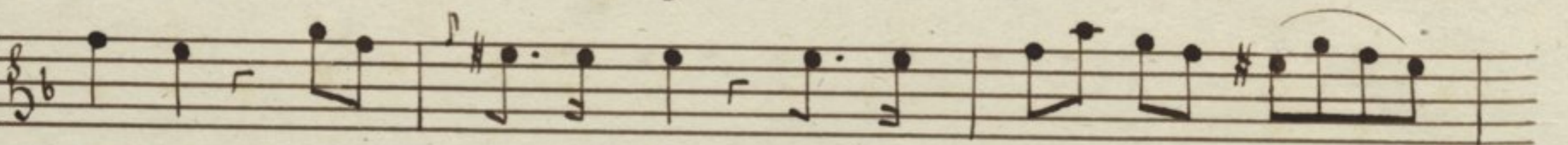
glo ri am in hac San cta So lem - ni ta - -



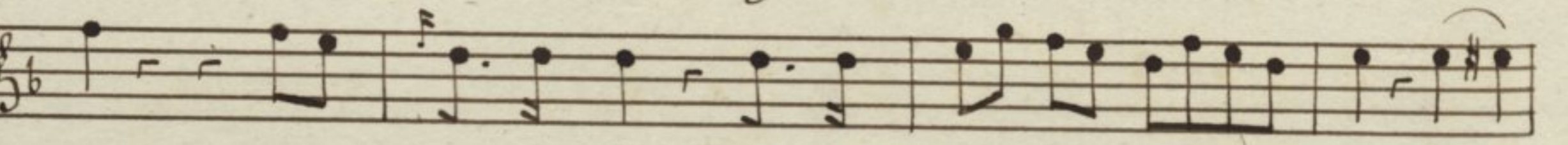
te mi ra bi lis ge ni tri cis De i



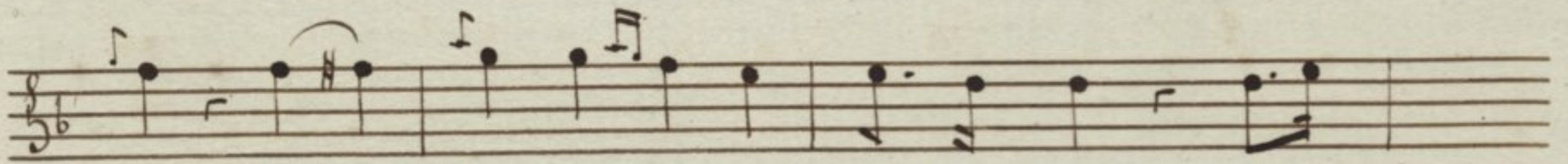
Christu ca na mus glo ri am in hac San cta So lem ni



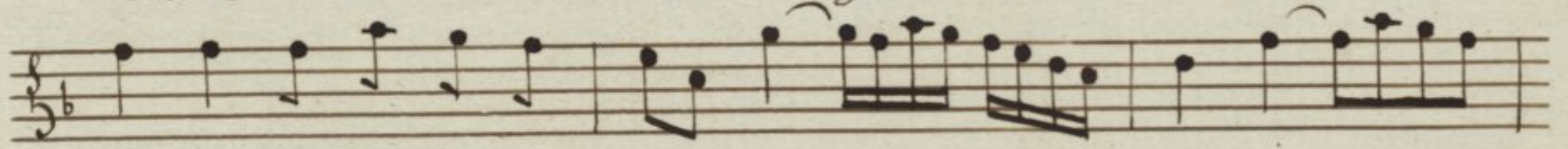
tatem mi ra bi lis ge ni tri cis De - -



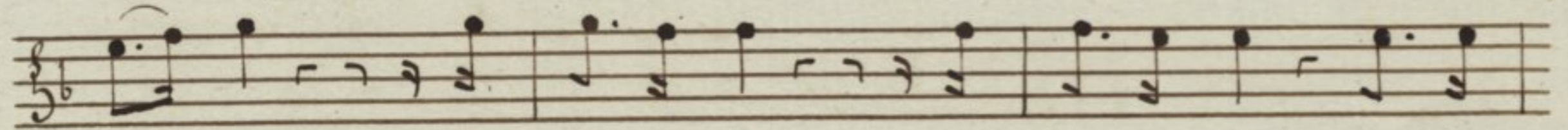
i mi - ra bi lis ge ni tri cis De - i Chris-



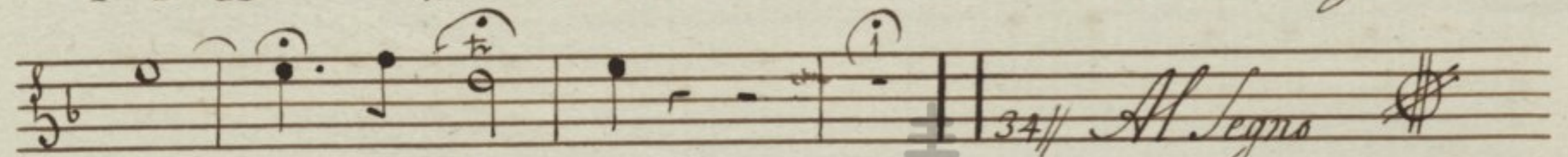
tum Chris - tum cae na mus glo ri a in -



hac San cta So le mni ta - - - - -

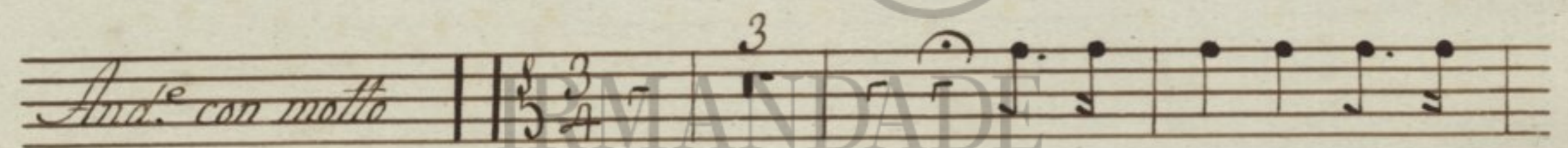


- - te mi ra bi lis mi ra bi lis ge ni



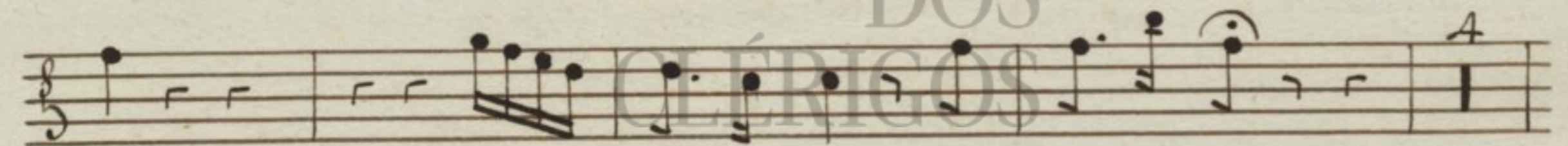
tri - - cis De i

Responsorio 3.

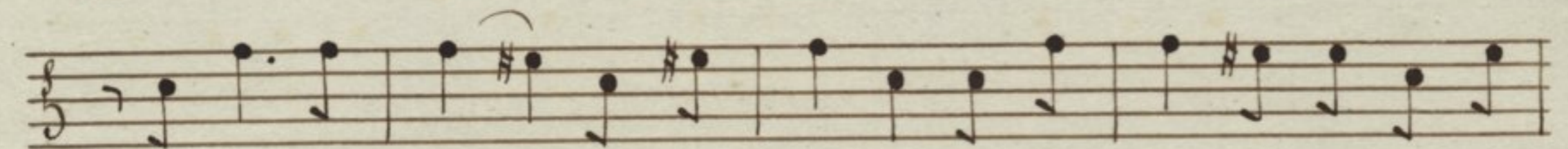


Ande con molto

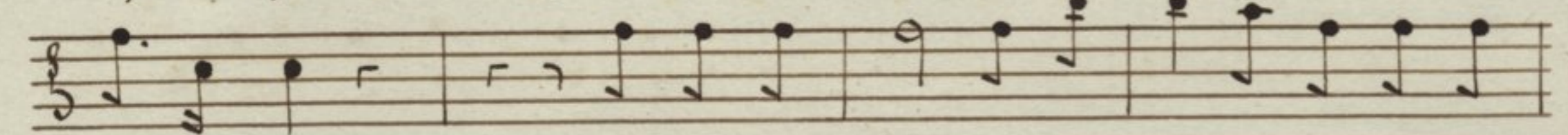
Bene di cta Fi lia



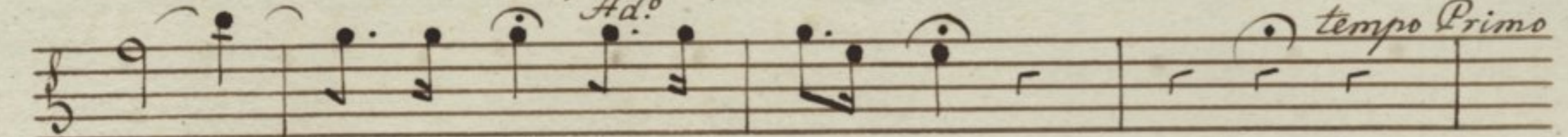
tu a - Do mi no a Do mi no



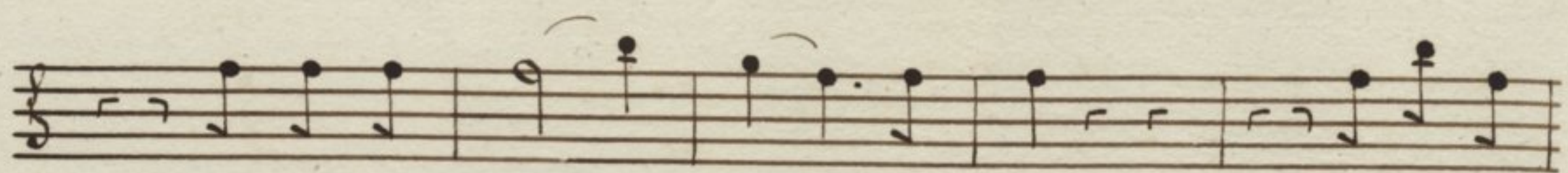
qui a per te - fructum vi ta fructum vi ta com mu ni



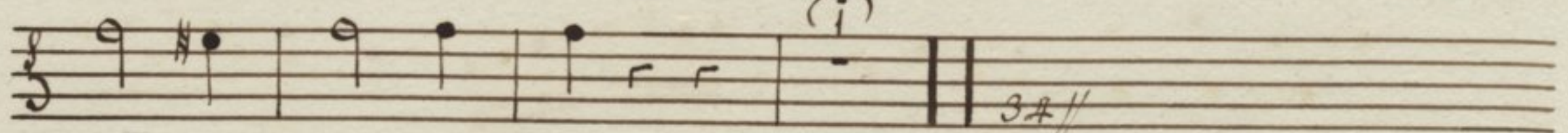
ca vi mus qui a per te fructum vi ta com mu ni



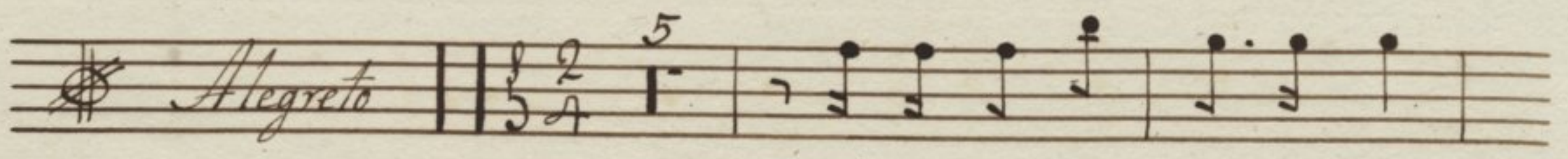
ca - - - vi mus fructus vi - ta



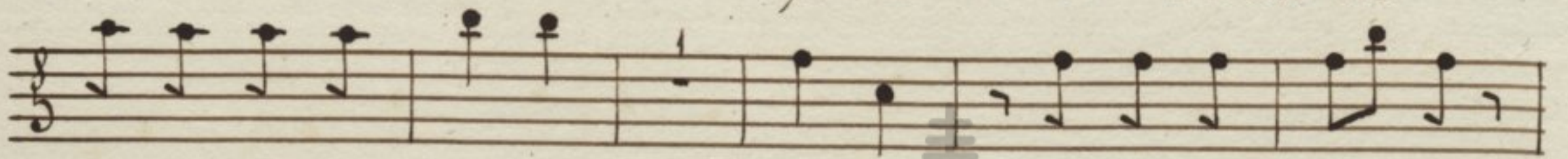
Com mu ni ca - - - - vi mus com mu ni



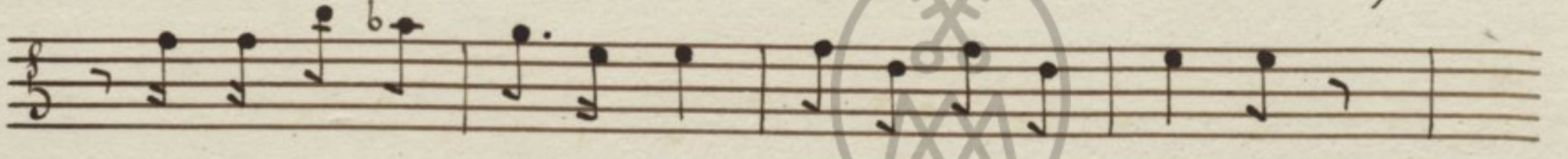
ca - - - vi mus.



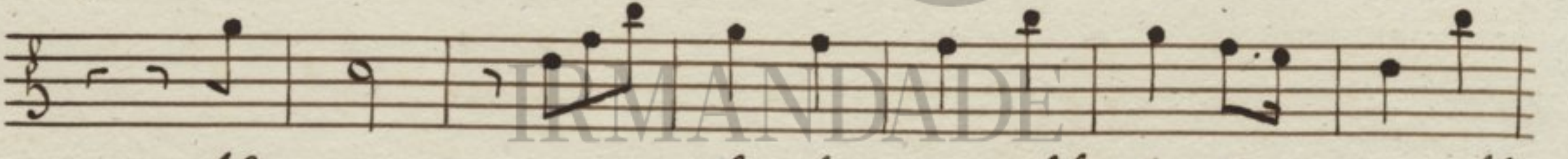
pla cu is ti Do mi no



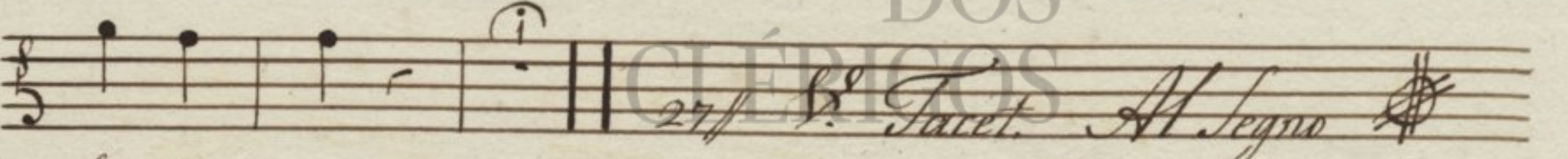
nos tro Je su Christo So la si ne ex em plo



pla cu is ti Do mi no nos tro Je su Christo

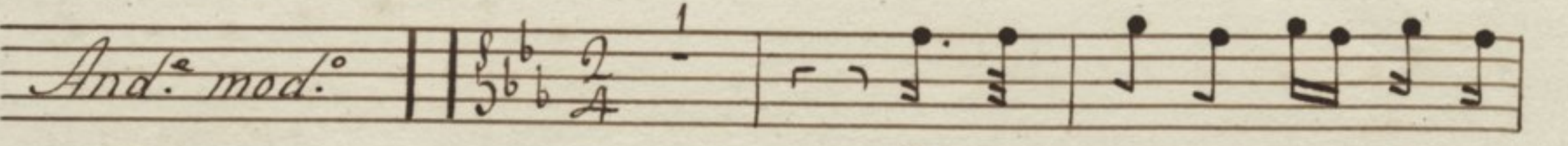


Al - - - - le lu ia Al le lu - ia Al

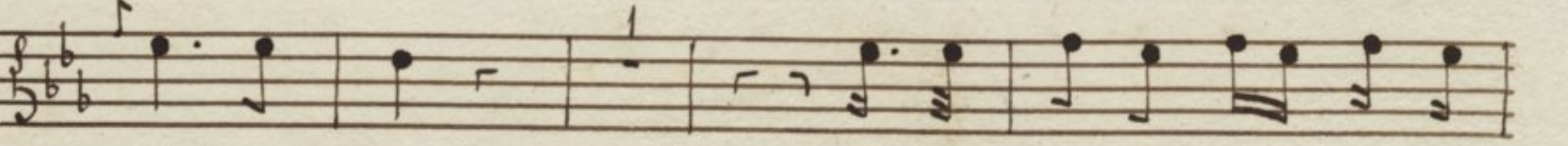


le lu ia.

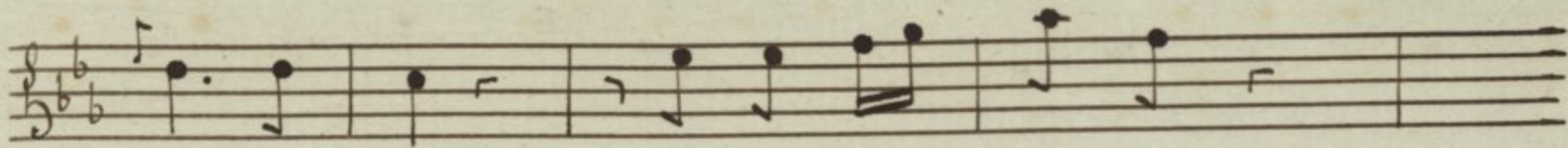
Responsoario 6.º



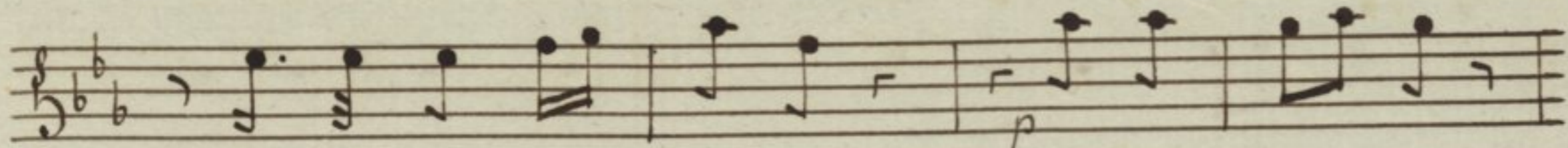
Be ne di cta in ter mu



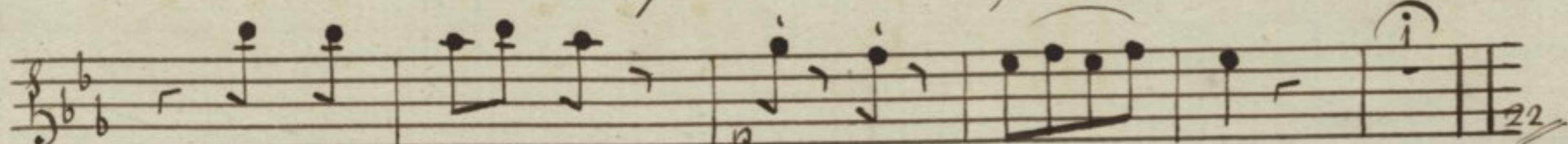
li i res be ne di cta in ter mu



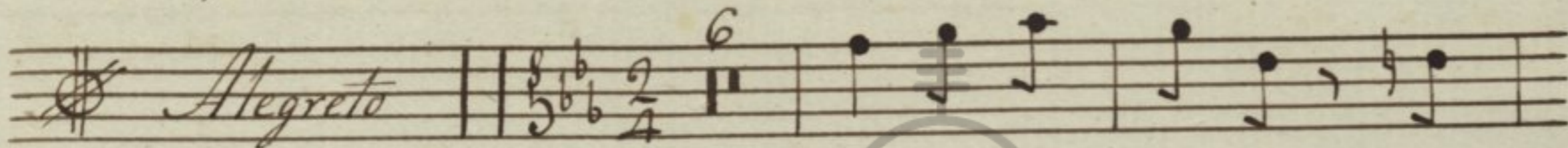
li e res et be ne - di ctus



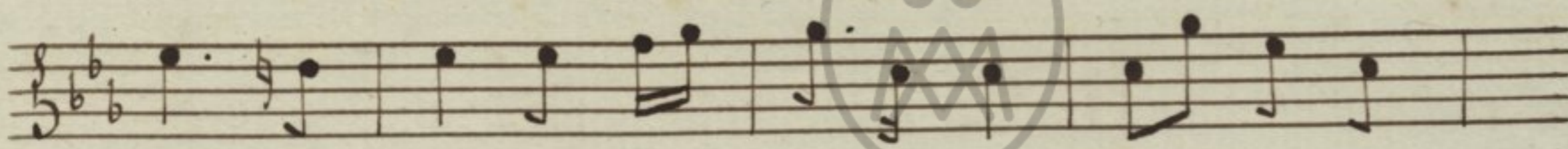
be ne di ctus fructus fructus ven tris



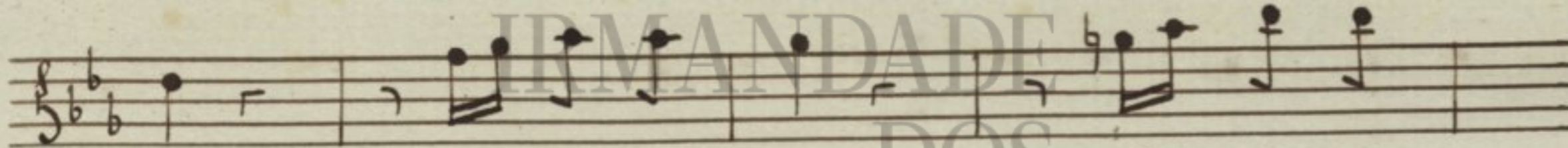
fructus ven tris ven tris tu - - i



Un de hoc mi hi ut



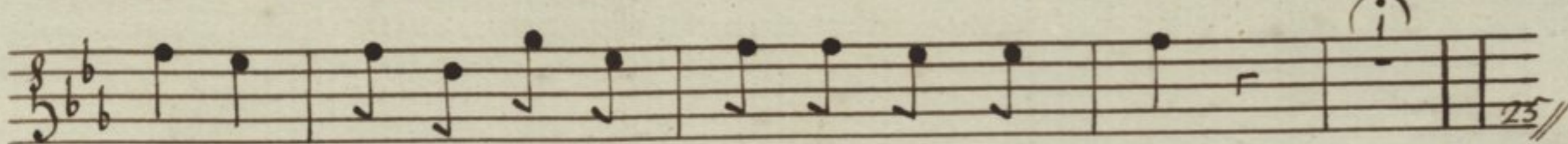
ve ni at Ma ter - Do mi ni me i ad



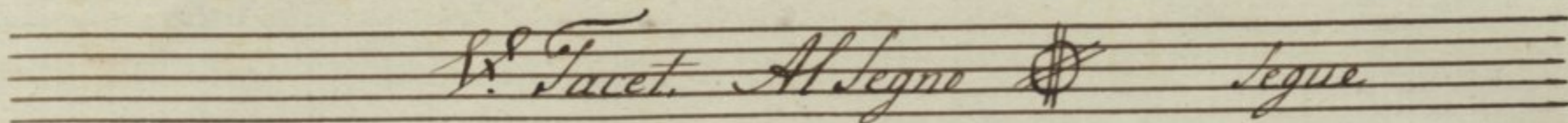
me Alle lu ia Al le lu



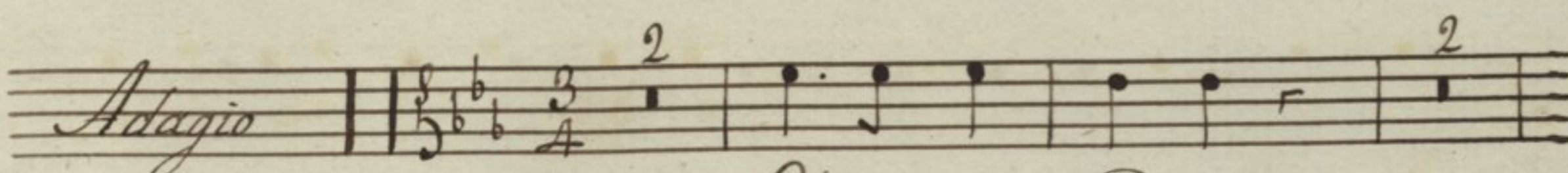
ia Al le - - - - -



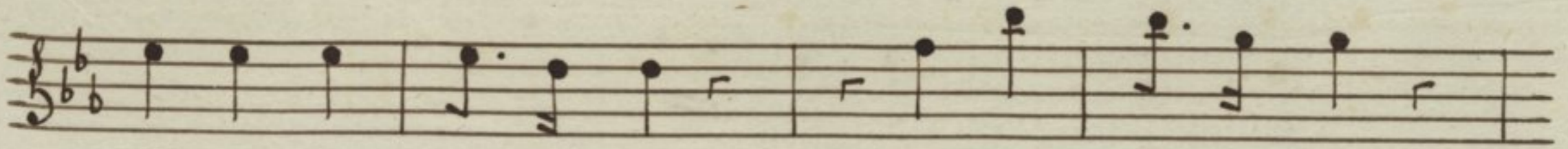
le lu ia Alle lu ia Alle lu ia



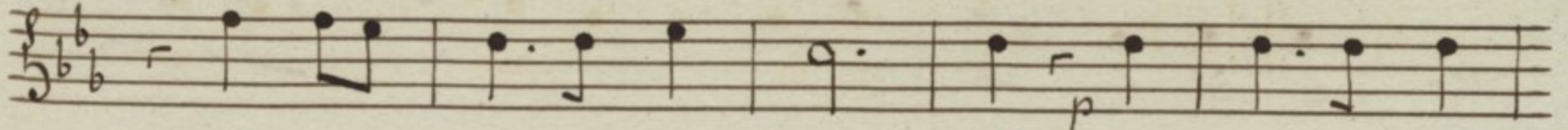
V. Tacet. Al Segno segue



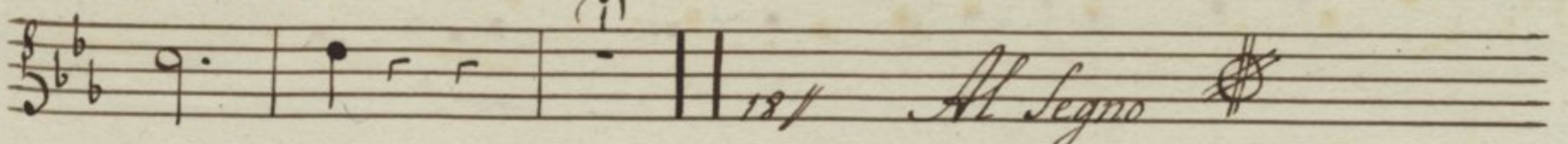
Glo ri a Pa tri



Pa tri et Fi li o et Spi ri tu i

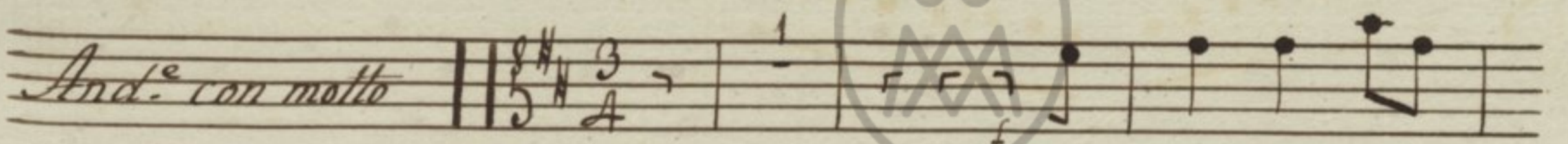


et Spi - ri tu i San cto Spi ri tu i

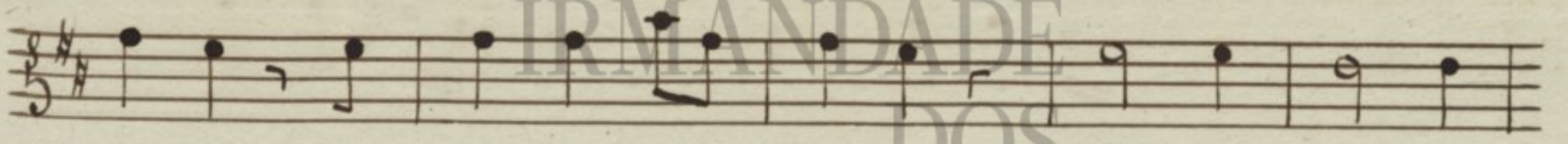


San cto.

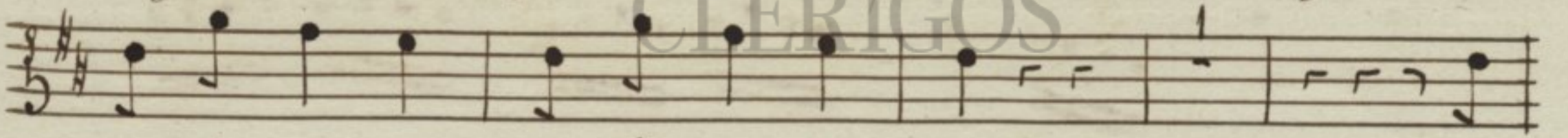
3.º Noturno Responsorio 7.º



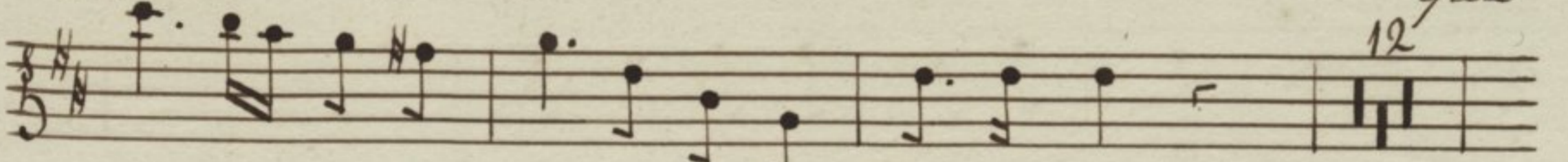
Be a ta es



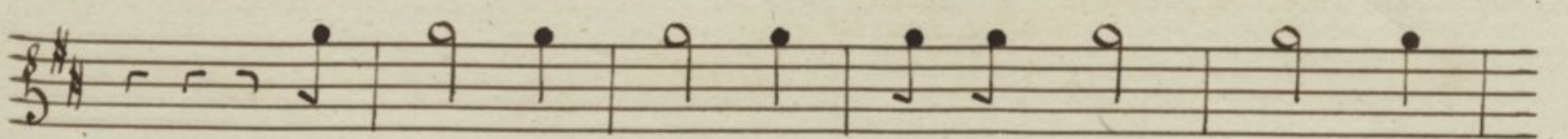
vir go es vir go Ma - ri a De i ge ni



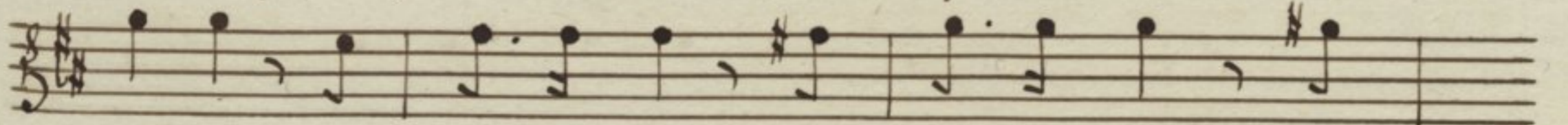
trix be a ta es be a ta es



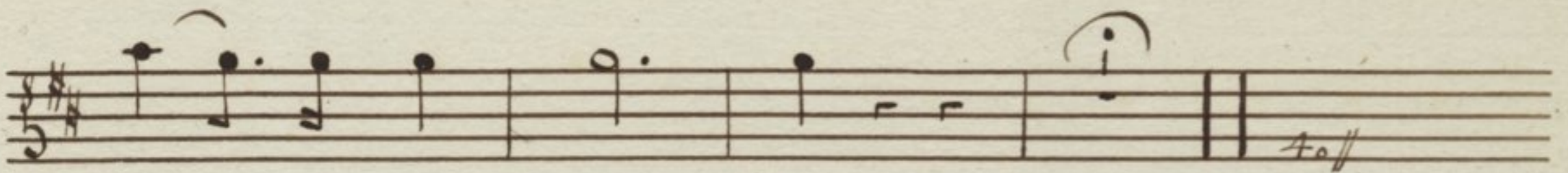
cre di dis ti cre di dis ti Do mi no



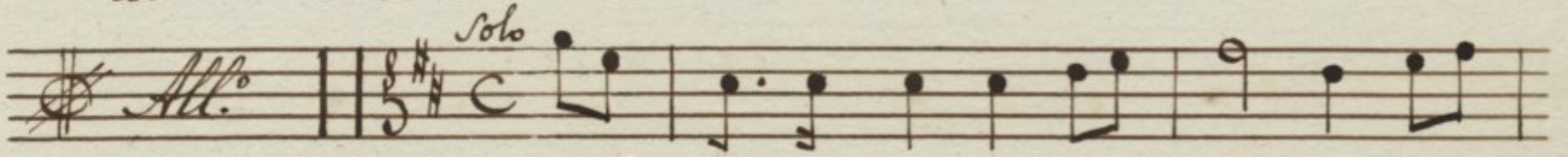
per fe cta sunt in te que di cta sunt



ti bi que di cta sunt que di cta sunt que



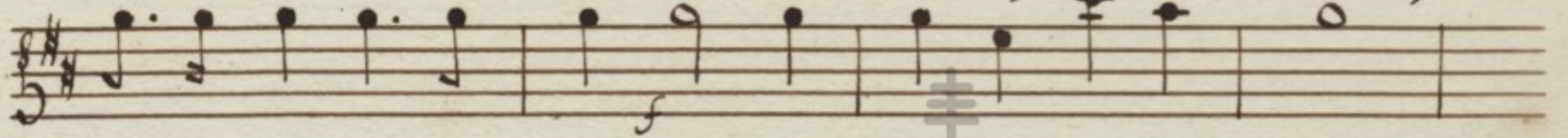
di - cta sunt ti bi



Pro - pte re a be ne di xit te -



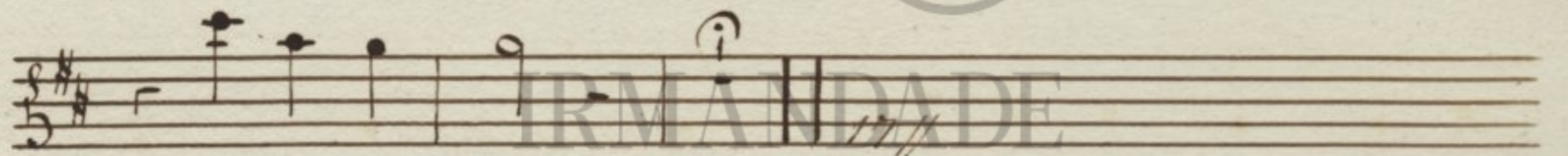
Je - us in a ter - num pro - pte re a pro -



pte re a be ne di xit te Deus in a ter



num Al - - - - le lu ia



Al le lu ia

B. Tacet. *All. Segno*

Gloria do 2.º Responso

Adagio non tanto | 3/4 | 2 |

Glo - ri - a Pa - tri

Pa - tri et Fi - li - o et Spi - ri - tu i - San -

cto

cto Spi - ri - tu i - San -

cto Spi - ri - tu i - San -

cto

cto Spi - ri - tu i - San -

cto. | 19 | *Allegro*

cto.

IRMANDADE
DOS
CLÉRIGOS